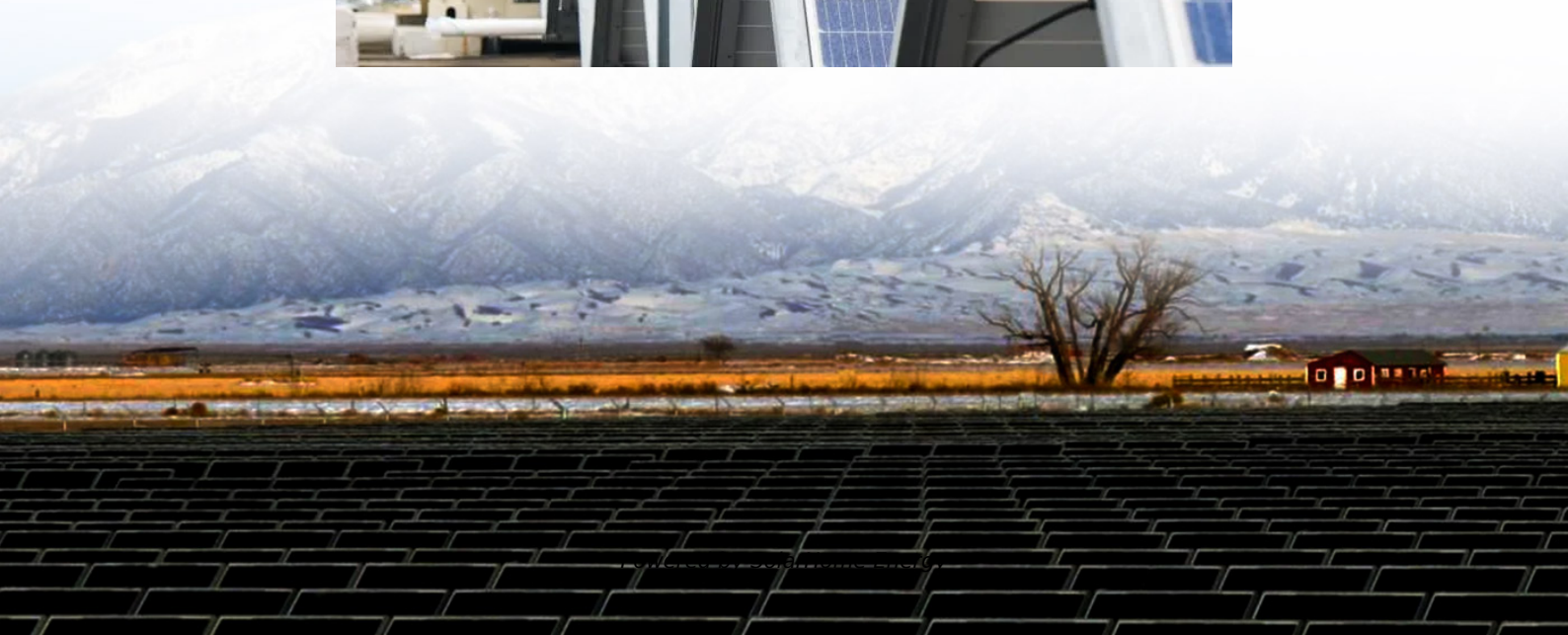


Which type of inverter should I use for a 100A battery





Overview

In general, for a 100ah battery, a 1000 watt pure sine wave inverter will be a good suit. It provides enough power to operate a wide range of household or camping appliances. Now, let's figure out how to choose the right inverter size for a 100ah battery, based on what you need.

When picking an inverter for your 100ah battery, it's best to choose a pure sine wave inverter. This type of inverter gives a steady power output, similar to what you get from the electricity grid. This clean power is safer for your appliances and makes them work.

To ensure a successful and safe experience with your inverter, here are a few additional tips to keep in mind: 1. Pick the Right Size Cable: Using the right size cables for connecting your inverter to the battery and appliances is important. Thicker cables with.

To help you pick the right inverter size, I've made a handy chart. It shows how different inverter sizes can handle running different things at the same time. This chart covers a range.

Select the inverter type: Choose a pure sine wave inverter for superior performance and protect your appliances from potential damage. Additional tips: Using appropriately sized cables and ensuring proper ventilation will further enhance the efficiency and reliability of your inverter system. What size inverter for a 100Ah battery?

In general, for a 100ah battery, a 1000 watt pure sine wave inverter will be a good suit. It provides enough power to operate a wide range of household or camping appliances. Now, let's figure out how to choose the right inverter size for a 100ah battery, based on what you need. How to Choose the Right Size Inverter for a 100Ah Battery?

.

Can I use a 2000 watt inverter with a 100 watt battery?

Yes, you can use a 2000 watt inverter with a 100ah battery. But if you use 2000 watts from your 12v 100ah battery, it will use up the battery faster and



over time, it will also shorten the battery's life. Can I use a 1500W inverter with a 100Ah battery?

Yes, you can use a 1500 watt inverter with a 100ah battery.

How do I match my inverter with a 100Ah battery?

To match your inverter with a 100Ah battery, several factors must be considered. Inverters are rated based on continuous power and surge power. Continuous power is the amount of power the inverter can supply continuously without overheating or damage. Surge power refers to the short-term power needed to start appliances with high startup currents.

What size solar inverter should I buy?

To determine the correct size solar inverter for a 100Ah battery, first, determine which AC loads you wish to power. The best inverter option is the Victron Phoenix Compact 1200VA – 2000VA, which costs over a thousand dollars. The size and type of inverter to install depend on the following factors:.

How to choose an inverter for a 100 Ah battery?

When picking an inverter for your 100ah battery, it's best to choose a pure sine wave inverter. This type of inverter gives a steady power output, similar to what you get from the electricity grid. This clean power is safer for your appliances and makes them work their best.

Do I need a 24V inverter for a 100Ah battery?

If you have a 12V battery, you will need a 12V inverter, while a 24V battery requires a 24V inverter. Make sure to verify the voltage of your battery before selecting an inverter. When picking an inverter for your 100ah battery, it's best to choose a pure sine wave inverter.



Which type of inverter should I use for a 100A battery



Lithium Battery for Inverter: Pros, Specs, and Tips

Lithium batteries offer top performance and long life for inverters. This guide covers all you need to know for your power storage needs.

What Size Inverter For a 100W Solar Panel?

Mention the word inverter and we think of those devices that allow AC devices to run off solar panels. Mostly they are used in large solar arrays, but can you use an inverter with a 100 watt ...



How to Determine the Right Inverter Size for a 100Ah ...

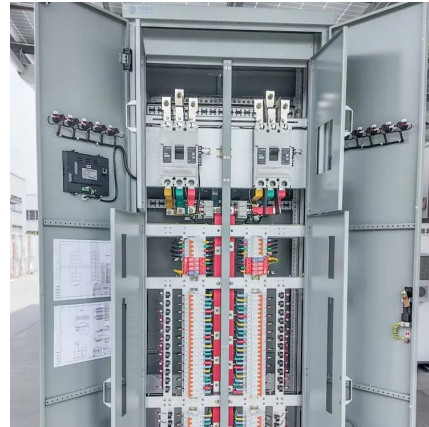
Determining the right inverter size for a 100Ah battery is essential for ensuring optimal performance and efficiency in your power system. The ...

Lithium Batteries: What Size Inverter Can I Use?

This type of lithium setup allows for much larger inverter installations, typically



2000w-5000+ watts (subject to overall battery capacity installed of course.) ...



Can I Use a 1500W Inverter with a 100Ah Battery for Camping ...

You can use a 1500W inverter with a 100Ah battery, but performance may be limited. A 100Ah battery could quickly run out of power. You can connect several 100Ah ...

Can I Use a 1500W Inverter with a 100Ah Battery

Yes, you can use a 1500W inverter with a 100Ah battery--but only for a limited time and with key considerations in mind. When people explore off-grid setups, RV power systems, ...



What size inverter can I run off a 100Ah lithium battery?

Pairing inverters with lithium batteries requires balancing power demand and longevity. LiFePO4's flat discharge curve maintains voltage stability, supporting inverters ...



Can One 12 Volt Battery Run a 1000 Watt Inverter?

Yes, a single 12-volt battery can run a 1000-watt inverter, but the runtime depends on several factors such as the battery's capacity, the inverter's efficiency, and the load ...



What Will An Inverter Run & For How Long? (With ...

I saw on many forums that most people are confused about what they can run on their 1000,1500,2000,3000, & 5000-watt inverter and how long ...

What Size Inverter Can I Run Off a 100Ah Battery? Maximize ...

What Size Inverter Is Safe to Use with a 100Ah Battery? The safe inverter size to use with a 100Ah battery is typically between 300W to 1200W, depending on your power ...



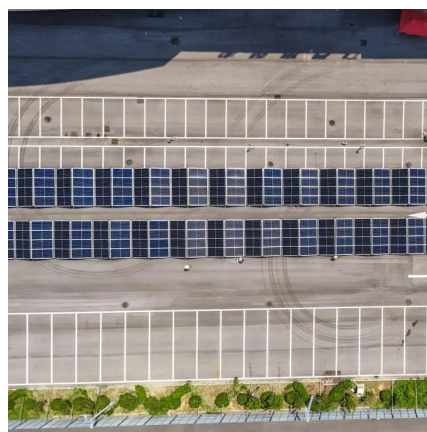
How Many 12V Batteries Do I Need for a 5000 Watt Inverter?

To power a 5000-watt inverter, you typically need four to six 12V batteries rated at 100Ah each, depending on the load and duration of use. This configuration ensures that the ...



What Size Inverter Can I Run Off a 100Ah Battery? A ...

The right combination ensures efficiency, longevity, and optimal performance. This detailed guide will help you navigate through the decision-making process to determine the ...



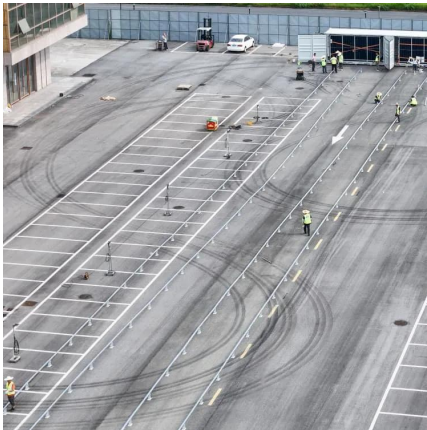
What Size Inverter Can I Run Off a 100Ah Battery? Maximize ...

A 100Ah battery can support a 1000W inverter for roughly one hour. Avoid using a 2000W inverter with a single 100Ah battery, as it may overdraw. For higher power ...

Best Inverters Compatible With 100Ah Battery for RVs, Solar, and ...

1 day ago · September 11, 2025 Choosing the right inverter for a 100Ah battery is critical for maximizing power efficiency in RVs, solar setups, and off-grid systems. This article reviews ...



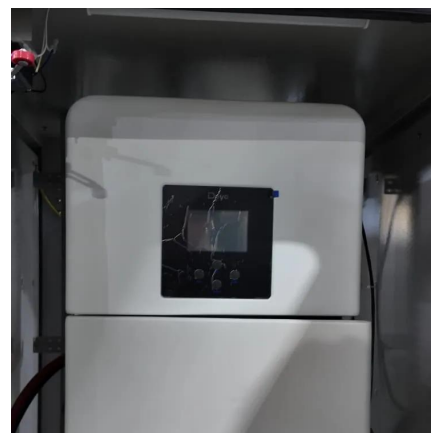


[Best Inverter For 100Ah Battery \(+ Calculations\)](#)

What Is The Best Inverter For A 100Ah Battery? I would advise you to buy the Victron Phoenix Inverter Compact 1200VA - 2000VA. The Phoenix Inverter Compact is a pure ...

[How Many Batteries for 1000Watt Inverter - PowMr](#)

What Size Battery for 1000W Inverter To determine how many batteries are needed for a 1000W inverter, start by considering the battery capacity and voltage. Batteries ...

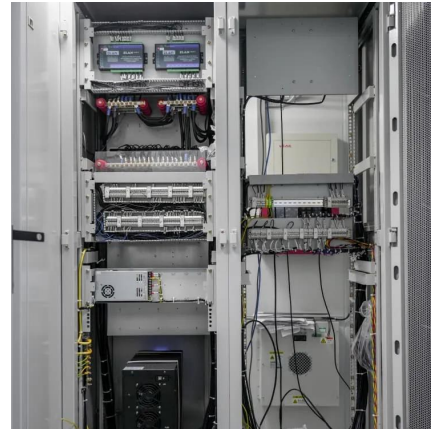


How to Determine the Right Inverter Size for a 100Ah Battery

Determining the right inverter size for a 100Ah battery is essential for ensuring optimal performance and efficiency in your power system. The inverter must match the power ...

What Does "100Ah" in a Battery Mean? A Beginner's ...

Learn what '100Ah' means in a battery, how it impacts performance, and why it's crucial for your energy needs. A beginner's guide.



Battery To Inverter Wire Size Calculator: What Size ...

The battery to inverter wire size calculator below will provide the size of the Copper wire that you need in AWG (American Wire Gauge) and ...



What Size Inverter for 100Ah Battery? - MWXNE POWER

In this guide, we'll walk you through what size inverter works best with a 100Ah battery, how long your battery will last, and how to size your inverter-and-battery combo for ...



[Sizing the Right Inverter for 100ah Battery](#)

In this guide, I will walk you through the process of sizing the right inverter for a 100ah battery along with an inverter size chart.





What size inverter do you need for a 100ah battery?

The specs of your battery bank. In this article, I explain how these factors come into play, and I discuss the specifications you should pay attention to when choosing an ...



What Size Fuse For 100Ah Battery

For instance, if the system's maximum continuous current is 80A, a 100A to 120A fuse may be appropriate. Types of Fuses Suitable for a 100Ah Battery Several ...

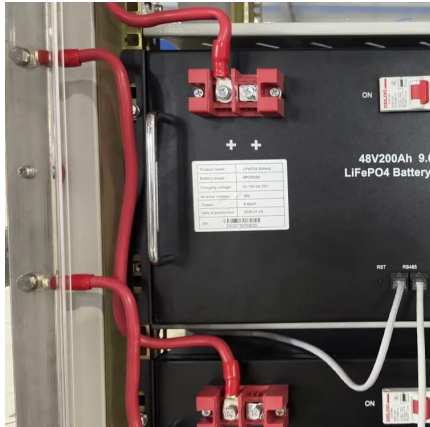
[What Is the Maximum Inverter for 100Ah Battery?](#)

Learn how to choose the best power inverter for your 100Ah battery. Understand compatibility, installation, and usage tips for optimal performance.



[What Inverter Size is Best for a 100Ah Battery?](#)

Rule of Thumb: A 12V 100Ah battery can reasonably power an inverter up to 1000W-1200W for short periods. For continuous loads, 500W-800W is more efficient and battery-friendly.



Best Inverter For 100Ah Battery (+ Calculations)

What Is The Best Inverter For A 100Ah Battery? I would advise you to buy the Victron Phoenix Inverter Compact 1200VA - 2000VA. The Phoenix ...



Contact Us

For catalog requests, pricing, or partnerships, please visit:
<https://www.talbert.co.za>