

Which lithium battery BMS is the best





Overview

In this article, we will compare three leading BMS solutions—JK BMS, JBD Smart BMS, and DALY BMS—to help you choose the right BMS for your lithium-ion (Li-ion) or lithium iron phosphate (LiFePO₄) batteries.

The best BMS for lithium and lifepo4 batteries really does depend on your application and budget. There are plenty of cases where all of the BMS in this article are total overkill. If, however, you need the power, performance, reliability, and configurability.

All three of the above-mentioned BMS companies are great and offer many different models, but we will compare three BMS of similar power levels from each company.

How to choose a good BMS for lithium batteries?

A good BMS will enhance battery performance, extend lifespan, and ensure safe operation by preventing overcharging and overheating. When selecting a BMS for lithium batteries, it is crucial to understand the various specifications and features that will best suit your application.

What happens if a lithium ion battery does not have a BMS?

Without a BMS, lithium-ion batteries can overcharge or over-discharge. This condition can lead to battery damage or even fires. A BMS optimizes the charging process, ensuring longer battery life. It prevents abuse by balancing the charge across individual cells.

What is a lithium-ion battery management system (BMS)?

Together, we'll get the most out of your lithium-ion pack. In summary, we believe that a battery management system (BMS) is vital for efficient and safe use of lithium-ion battery packs. It not only extends battery lifespan but also monitors its health.

What is the best BMS for lithium & LiFePO₄ batteries?

Choosing the best BMS for lithium and LiFePO₄ batteries can be a challenge if



you are not familiar with all the terms and with so many brands on the market that all claim to be the best. JK BMS, JBD Smart BMS, and DALY BMS are the best BMS makers out there, but this article reveals that there are levels to that, too.

Why should you choose a battery management system (BMS)?

Selecting an appropriate BMS is vital for: Safety: Preventing overcharging and overheating can avoid catastrophic failures. Performance: A well-matched BMS optimizes battery performance and efficiency. Longevity: Proper management can extend the lifespan of lithium-ion batteries. 2. Key Factors to Consider When Choosing a BMS.

How do I choose a battery management system for lithium-ion batteries?

Selecting a Battery Management System (BMS) for lithium-ion batteries requires careful consideration of specific features. The key features you should consider are as follows: These features may vary in importance depending on the specific application and usage environment of the battery system.



Which lithium battery BMS is the best



Lithium Battery BMS: Battery Management System

The Battery Management System, known as the BMS, is a lithium battery's brain. If properly designed, it can perform countless functions, from balancing the ...

How to Wake Up a BMS in Sleep or Safe Mode

Best case scenario, all you will have to do is detach and reattach the load from the battery to wake up a BMS. This, however, will only work if your BMS has auto-recovery. If that ...



Deep Cycle Lithium Battery

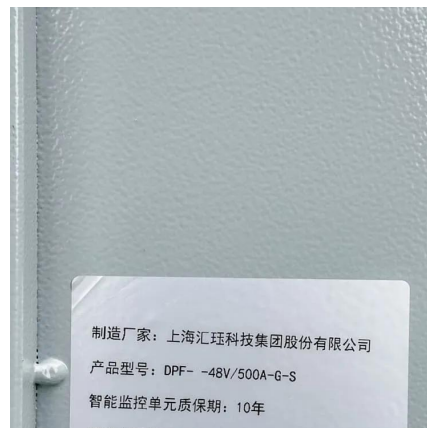
High reliability, probably the best Lithium Battery BMS on the market. Maximum continuous current of 120 Amps. Similar BMS by others go for \$360. Above is ...

Lithium Series, Parallel and Series and Parallel

Introduction Lithium battery banks using batteries with built-in Battery Management



Systems (BMS) are created by connecting two or more batteries together to support a single ...



Best 48v BMS

I am trying to find an alternative which works like a GenZ battery: ie a self managed lithium battery which simply takes a charge like a dumb lead acid battery, and will not exercise ...

[BMS LiFePO4 Guide: Safety, Setup & Sizing](#)

Clear, practical guide to BMS LiFePO4: safety features, wiring basics, setup steps, and sizing so your LiFePO4 battery runs longer and safer.



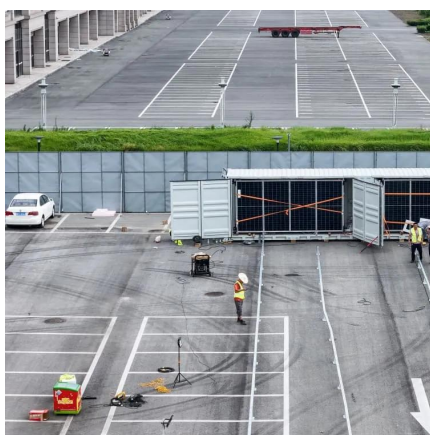
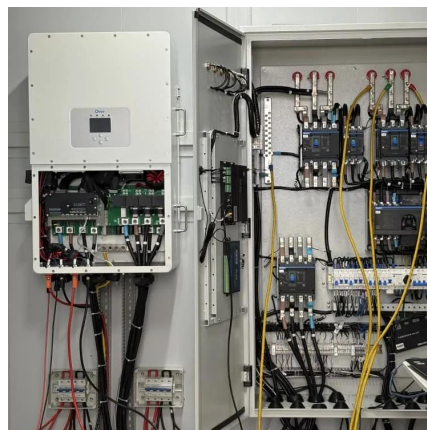
[How to Choose the Best BMS for Your Battery Needs](#)

To choose the best BMS, start by defining your battery type, voltage, current, and application requirements. Compare BMS features against these needs, prioritizing safety, ...



Battery Management System

Centralized BMS: Suitable for smaller packs or where cost is a concern. Modular BMS: Best for larger systems where flexibility and scalability are needed. Distributed BMS: ...

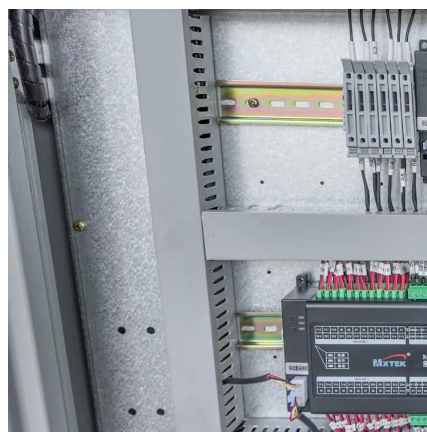


How Do I Choose a BMS for Lithium Batteries? , Redway Tech

Our Lithium LiFePO4 batteries are designed with advanced BMS options that ensure optimal operation while extending battery life.

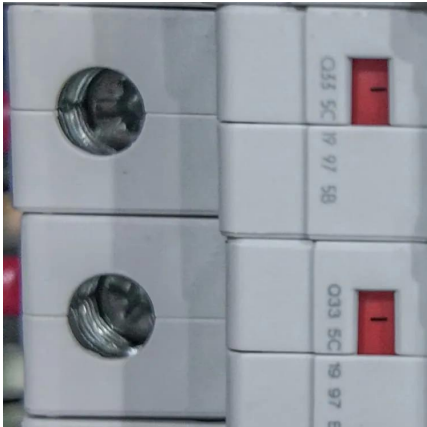
BMS settings for LiFePO4

The best settings for a battery management system (BMS) for a lithium iron phosphate (LiFePO4) battery will depend on the specific ...



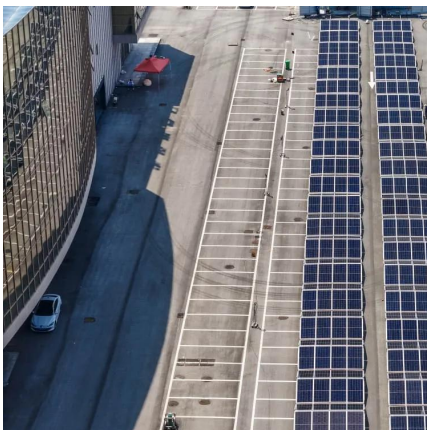
15 Best Lithium Battery BMS Units for Safe and Efficient Power

Just explore these top 15 lithium battery BMS units to discover the perfect balance of safety, performance, and innovative features for your energy needs.



[Best BMS for Lithium and Lifepo4 Battery Packs](#)

In this article, we will compare three leading BMS solutions--JK BMS, JBD Smart BMS, and DALY BMS--to help you choose the right BMS for your lithium-ion (Li-ion) or lithium ...



[Battery Management Systems for Lithium-Ion Packs](#)

In essence, a BMS is an essential component that assures the safe and efficient operation of lithium-ion batteries. It helps to guarantee that your battery gives you the performance you ...

Do I Need a BMS for Lithium-Ion Batteries? Benefits and ...

Overall, a BMS enhances battery reliability and safety during charging and discharging operations. Without a BMS, lithium-ion batteries can overcharge or over ...





[Which BMS to select for a lithium battery?](#)

Selecting the right BMS (Battery Management System) for a lithium battery will optimise its performance, safety and lifespan.

Top 5 Bms For Lithium Battery: Boost Performance & Safety

Did you know that without a BMS, lithium batteries can fail or even explode?
Understanding how a BMS works can empower you to choose better batteries for your gadgets.



Weize 12V 100Ah TM LiFePO4 Lithium Battery, Built-in Smart BMS...

Buy Weize 12V 100Ah TM LiFePO4 Lithium Battery, Built-in Smart BMS, Group 31 Deep Cycle Battery Perfect for Trolling Motor, RV, Solar, Marine, Overland/Van, and Off Grid ...



Best Battery Management System For Lithium ion Batteries

Let's analyze the key parameters necessary for selecting the right battery management system for lithium ion batteries. The selection of an accurate battery ...



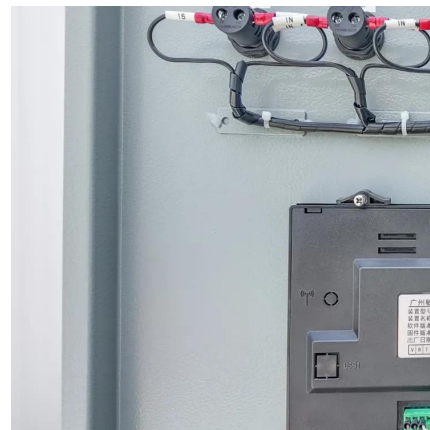
Battery Management System

Centralized BMS: Suitable for smaller packs or where cost is a concern. Modular BMS: Best for larger systems where flexibility and scalability ...



[\[2025 Guide\] How to Choose LiFePO4 BMS - LiTime-AU](#)

Learn how to choose the right LiFePO4 BMS for your needs with practical tips, especially for a 200Ah lithium battery used in RVs, marine, and ...



How to Choose a Lithium Battery Management System (BMS)

Selecting the right lithium Battery Management System (BMS) is critical to ensuring the safety, performance, and longevity of your battery system. Whether you're powering consumer ...





Battery Management Systems for Lithium-Ion Packs

In essence, a BMS is an essential component that assures the safe and efficient operation of lithium-ion batteries. It helps to guarantee that your battery gives ...



How Do I Choose a BMS for a Lithium-Ion Battery?

Choosing the right Battery Management System (BMS) for a lithium-ion battery is crucial for ensuring safety, performance, and longevity. A BMS monitors and manages the ...

How does lithium battery BMS determine the battery's ...

To ensure the safe, stable, and efficient operation of battery packs, the Battery Management System (BMS) was developed, becoming an ...



Best Battery Management System For Lithium ion ...

Let's analyze the key parameters necessary for selecting the right battery management system for lithium ion batteries. The selection of an ...



Smart Battery Management System for Your Lithium ...

This BMS is a cutting-edge device that is adaptable to diverse lithium battery chemistries like lithium-ion, lithium-polymer, and lithium iron ...



7 Best Battery Management System for Electric Vehicle

LG Chem Battery Management System: LG Chem is a leading manufacturer of lithium-ion batteries for electric vehicles, and its BMS is ...

Contact Us

For catalog requests, pricing, or partnerships, please visit:
<https://www.talbert.co.za>