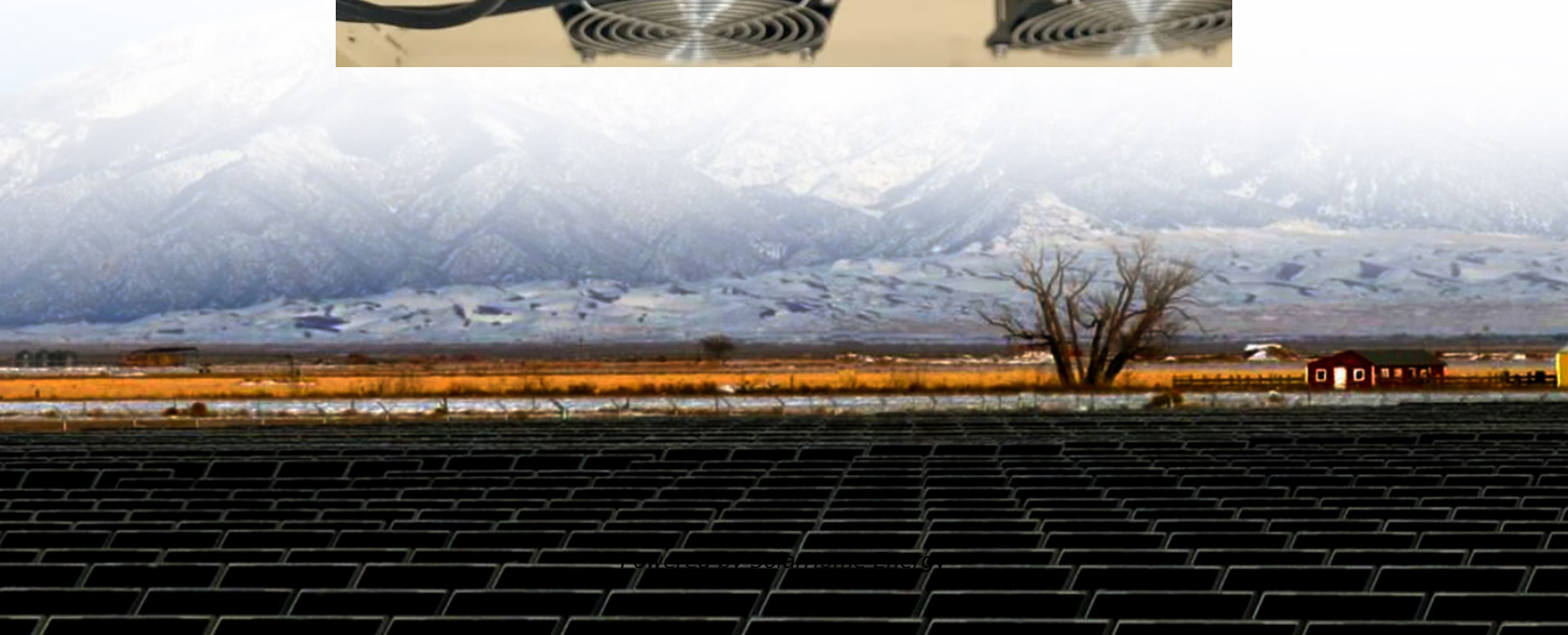


# **Which battery is best for converting 220V via inverter**





## Overview

---

Which battery is best for an inverter?

There are two kinds of batteries when it comes to powering inverters: lead-calcium batteries and lithium-ion batteries. Each battery has its pros and cons; let's look at each and see which is best for an inverter. Lithium-ion batteries are far superior to their lead-acid counterparts in overall performance, longevity, and maintenance.

What are backup batteries for inverters?

Backup batteries for inverters come in two basic options, lead-acid batteries or lithium-ion batteries—each works of a slightly different chemical composition that creates the electrical reaction inside it. Let's look at lead-acid batteries first and establish which backup situation would be a better choice than lithium-ion batteries.

What are the different types of batteries used for inverter applications?

Common types of batteries used for inverter applications include lead-acid, lithium-ion, and nickel-cadmium. Each of these chemistries has its own advantages and disadvantages in terms of durability. Lead-acid batteries are the most commonly used due to their low cost and proven reliability.

Are all batteries compatible with all inverters?

However, not all batteries are compatible with all inverters. To ensure a seamless and efficient operation, it's important to choose a battery that is well-suited for your specific power inverter. Before selecting a battery, it's essential to have a good understanding of your power inverter.

Can you use a battery with a power inverter?

Here are some essential battery considerations to keep in mind for using with a power inverter: There are different battery types available, each with its own advantages and disadvantages. The most common battery types used with



inverters are lead-acid and lithium-ion batteries.

Are deep cycle batteries good for inverters?

Deep cycle batteries are specifically designed to discharge a significant portion of their capacity, making them ideal for use with inverters. Unlike regular car batteries, which are designed for short bursts of high current, deep cycle batteries are built to handle continuous and extended power needs.



## Which battery is best for converting 220V via inverter

---



### [Which Inverter Battery Is Best \(Calculated Options\)](#)

Backup batteries for inverters come in two basic options, lead-acid batteries or lithium-ion batteries--each works of a slightly different chemical composition that creates the ...

### How to convert 220v battery into solar panel , NenPower

To convert a 220V battery into a solar panel system, one must understand the basic components involved in solar technology. 1. Assessing the Battery's Compatibility, 2. ...



### [Best Battery For Power Inverter \[Updated On](#)

Standing in pouring rain with your expensive gadgets, I realized why a good battery for a power inverter truly matters. I've tested various models, and only some can ...

### Ultimate Guide to Battery in Inverter: Choose & Maintain Right

Whether you're dealing with frequent outages or preparing for emergency backup, choosing the





right battery and power inverter combo can dramatically affect your experience. ...



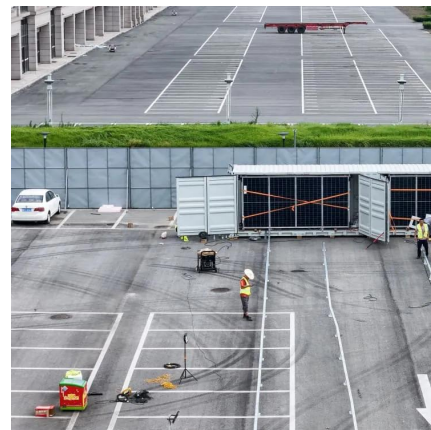
## Which Battery Is Best for an Inverter? - leaptrend

The "best" battery for your inverter depends on your budget, usage patterns, and environmental conditions. While premium brands excel in niche applications, Leaptrend offers ...



## 4 Key Factors to Find the Perfect Battery for Your Inverter: The

Choosing the best battery for the inverter ensures your system operates at peak efficiency, minimizing downtime during outages. Don't gamble with your power ...



## Inverter Calculator

To estimate the maximum battery current the inverter will require to run a piece of equipment or appliance, divide its continuous load wattage requirement by 10.



## Choosing the Right Inverter Battery: A ...

In conclusion, selecting the right inverter battery involves a combination of factors. From capacity and technology to brand reliability, each ...



## **Best Battery To Run An Inverter [Updated: August 2025]**

What Are the Best Types of Batteries to Run an Inverter? The best types of batteries to run an inverter include lead-acid batteries, lithium-ion batteries, and gel batteries.

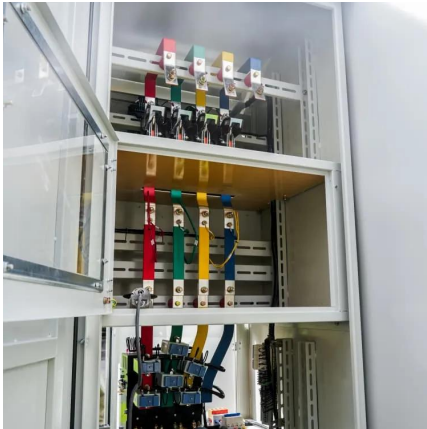
## Can I Use an Inverter to Charge a Battery

Yes, you can use an inverter to charge a battery, but there are several important considerations. Inverters are devices that convert DC (direct current) power from a battery or ...



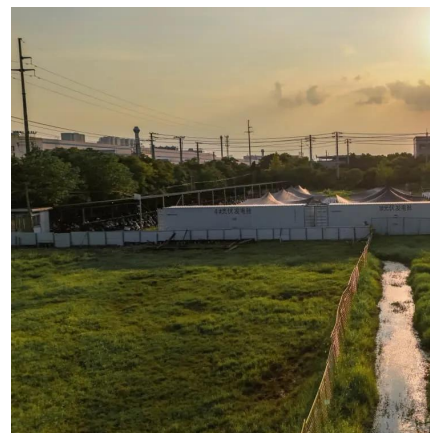
## **Career Compass**

Generated by Firebase StudioAnswer a few questions to find career paths that match your interests, skills, and values.



## What Battery Is Best for Inverters? A Comprehensive Guide

The best batteries for inverters typically include deep cycle lead-acid batteries, lithium-ion batteries, and AGM (Absorbent Glass Mat) batteries. Each type has unique ...



## Best 12 Volt Batteries and Inverters for Reliable Power Conversion

Whether you need to convert 12 volt battery power to AC for your vehicle, RV, or emergency backup, selecting the right 12 volt battery for inverter use is essential. This guide ...

## DC-to-AC Converters (Inverters): Design, Working & ...

These are used in numerous applications, including PV systems, battery storage systems, traction drives, variable speed drives, etc. Converting ...





## 12V-220V/230V Battery Inverter , 3000 Watt Pure ...

Shop Leaptrend 12V DC to 220V/230V/240V AC 3000W Pure Sine Wave Battery Inverter designed for RVs, Trucks, Outdoor, Off-Road, Marine, Home ...



## Best Power Inverters to Convert 12V DC to 220V AC for Cars and ...

Power inverters are essential for converting 12V DC power from vehicles or batteries into usable 220V AC power to run household appliances, electronics, and camping ...



## How to Convert a Car Battery into a Power Outlet without Inverter

Converting a car battery into a power outlet without an inverter is possible and can be a game-changer for those in need of portable power. Whether you're on a camping trip, ...

## Car Inverter, 12v DC to AC Power Inverter for Car , inverter

80w car power inverter, modified sine wave, DC 12v input to 220V AC output, advanced circuit design, high conversion efficiency up to 90%. Rated power 80w, peak power 160w. Adopting ...





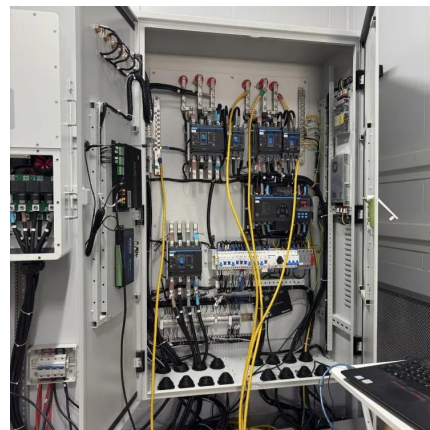
## Best Long Durable Batteries For Inverters [Updated On: July 2025]

After using various models, the Renogy 12V 200Ah AGM Deep Cycle Battery stood out for its remarkable discharge performance and durability. Its maintenance-free AGM design ...



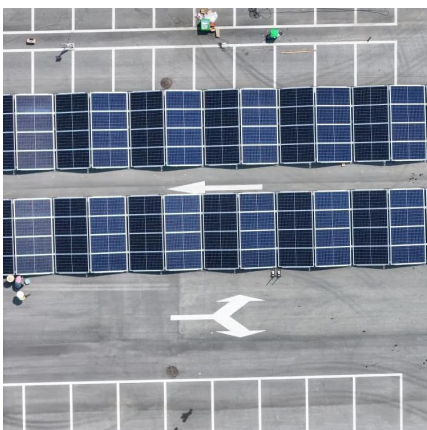
## [10 best car inverters from 12 to 220V](#)

We offer you a selection of the best car inverters that convert 12 V DC to 220 V AC. The rating includes the most reliable models that have received positive user reviews.



## Which Battery Is Best for an Inverter? - leaptrend

The "best" battery for your inverter depends on your budget, usage patterns, and environmental conditions. While premium brands excel in ...





## [Best Battery Options to Use with an Inverter](#)

The best type of battery to use with an inverter is a deep cycle battery. Deep cycle batteries are designed to provide a steady amount of power over a long period of time, which ...



## **Choosing the Right Inverter Battery: A Comprehensive Guide**

In conclusion, selecting the right inverter battery involves a combination of factors. From capacity and technology to brand reliability, each aspect plays a vital role.

## [Inverter Guide 2025: Top Off-Grid Picks](#)

Inverter comparison for 2025: Explore the best off-grid inverters for cabins, homes, and commercial setups with expert picks and performance tips.



## **Push-Pull Inverter 12V to 220V**

In this project, we design and construct a 12V to 220V push-pull inverter. This circuit is specifically designed to convert 12V DC into 220V DC, making it suitable for powering devices with AC ...



### Which Inverter Battery Is Best (Calculated Options)

Backup batteries for inverters come in two basic options, lead-acid batteries or lithium-ion batteries--each works of a slightly different chemical ...



### 220V to 230V inverter, pure sine wave

The inverters on this page work with a DC voltage of 220 Volt and provide 230V AC output voltage with a pure sine wave.

## Contact Us

For catalog requests, pricing, or partnerships, please visit:  
<https://www.talbert.co.za>