

Which Nepali telecom operator has more base stations





Overview

Ncell, the private telecom operator has installed more pole towers in the city area. Ncell adopts new technologies ahead of others and this also proves it. As the city areas need a higher capacity 4G network, Ncell increases the number of base stations (BTS) there. How many telecom network operators are there in Nepal?

According to the latest figures of Nepal Telecommunications Authority these are 6 telecom network operators in Nepal, they are NTC (Nepal Telecom), NCELL, Smart Cell (Smart Telecom), NSTPL, UTL, STM (CG Telecom). Where NTC is the first mobile network operator in Nepal. History of telecom in Nepal is a century long.

Which is the best mobile network operator in Nepal?

NTC is the oldest and pioneer telecom operator in Nepal and it is owned by the government. They offer many services, including 2G, 3G, and 4G. Another popular mobile network operator, especially for travelers, is Ncell, the leading private mobile operator offering 2G, 3G, and 4G.

Why does Nepal Telecom maintain a leading position in the market?

to maintain its leading position in the market. The company is committed to maintain trust and confidence extended by its valued customers and well-wishers. At the end of Poush 2075 (i.e. mid-January 2019), the total subscriber base of Nepal Telecom has exceeded 21.29 million.

How many people in Nepal have access to telephone service?

According to the latest Management Information system (MIS) report of the Nepal Telecommunications Authority (NTA), 97.65 percent of 26.49 million people in the country have access to telephone service. The report includes data of up to mid-December 2014. Telephone penetration increased by 12.88 percentage points in one year.

When did telecommunication service start in Nepal?



In Nepal, operating any form of telecommunications service dates back to 1970. However, telecom service was formally provided mainly after the establishment of MOHAN AKASHWANI in B.S. 2005. Later as per the plan formulated in the First National Five-year plan (2012-2017 BS), Telecommunication Department was established in B.S. 2016.

When was the first telephone exchange established in Nepal?

The first telephone exchange was established in Kathmandu in 1960. From 1960 to 2004, the state-owned Nepal Telecommunications Corporation (NTC), also known as Nepal Telecom, or Nepal Doorsanchar Company Limited (NDCL), had been the monopoly telecom carrier. Now, there are only two operators, so Nepal's telecom industry is a duopoly market.



Which Nepali telecom operator has more base stations



Ntc Grows 4G Coverage in Darchula through 25 of 30 ...

Office In-charge of Ntc Darchula, Krishna Bahadur Gurung shared that the 25 base stations in the district now provide 4G service, Gorkhapatra ...

Nepal Telecom starts the installation work of 4G LTE towers

Nepal Telecom (Ntc) has started the installation work of 4G LTE towers across the country. After the completion of the tower survey and the arrival of equipment from China, they ...



[What is a base station and how are 4G/5G base ...](#)

A base station is referred to a stationary trans-receiver used in telecommunications that serves as the primary hub for connectivity of wireless ...

[Ncell 4G reaches to 71 districts, Aims for More](#)

Ncell has around 3300 4G BTS to cover the 71 districts. They will need plenty of more such base



stations to cover all parts of the country. Do
checkout: How to activate 4G in ...



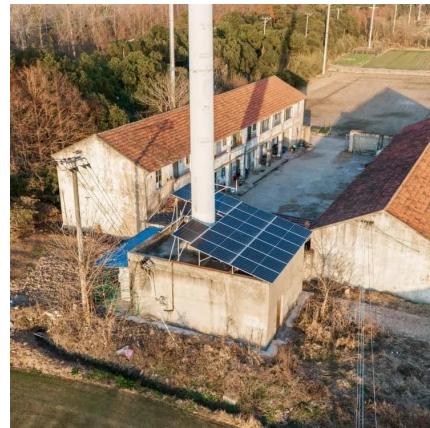
Ncell installed 338 mobile towers in the last FY

KATHMANDU: Ncell Axiata Limited has installed 338 new base transceiver stations (BTS), expanding service footprints to new locations further improving the quality of ...



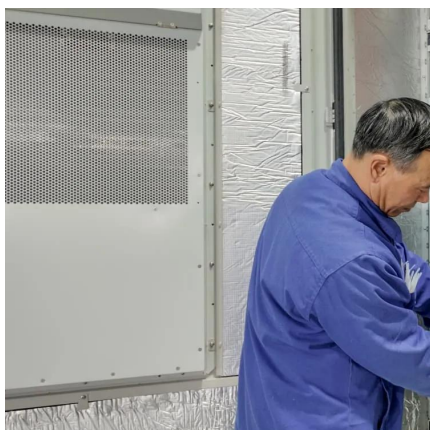
Ncell installed 338 mobile towers in the last FY

KATHMANDU: Ncell Axiata Limited has installed 338 new base transceiver stations (BTS), expanding service footprints to new locations ...



Why should you prefer 4G network? Speed, coverage, cost, etc

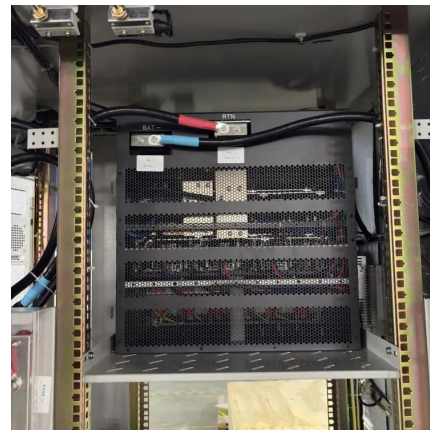
In the last few years, Nepali operators have greatly emphasized improving as well as expanding the fourth-generation network across the country. Besides, almost every phone ...





Country Profile: Nepal Country Profile: Nepal

In more recent news, Huawei is set to build an NPR 484 million (\$3.5m) data centre for Nepal Telecom, hoping to generate more income for the telco and the region.



Ncell Axiata deploys 338 towers to expand coverage across Nepal

Across the last fiscal year, Ncell said that it has upgraded close to 1,450 sites in over 60 districts of the country, enhancing the 4G capacity. The operator currently operates ...

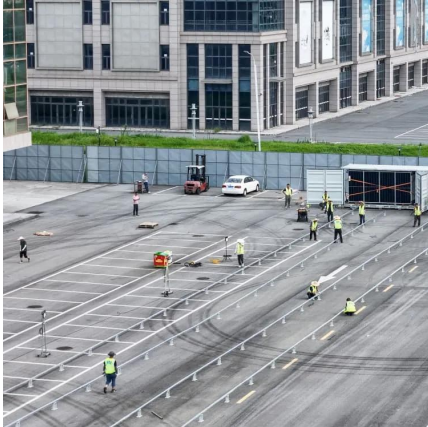
Ncell Axiata Deploys 338 Mobile Towers, Expands Network

Nepal's telecommunications provider, Ncell Axiata, has announced installing 338 new base transceiver stations (BTS), expanding its service footprint and bolstering the quality ...



Ncell operates more tower on pole to increase 4G speed

Ncell, the telco which adopts latest technology, adds more pole towers in 4G, to increase the 4G speed and cater the bandwidth demand.



Creating a foundation for Nepal's digital economy: ...

By William Zhang: Huawei Nepal CEO Huawei is a leading global provider of information and communications technology (ICT) infrastructure ...

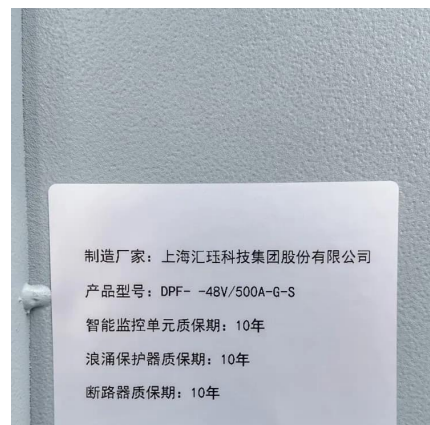


China's Rapid 5G Expansion: 1 MN Base Stations ...

China is leading the 5G expansion with over 1.16 million base stations and 450 million uses on the fifth-gen network. Where does Nepal stand?

Ncell Axiata Deploys 338 Mobile Towers, Expands ...

Nepal's telecommunications provider, Ncell Axiata, has announced installing 338 new base transceiver stations (BTS), expanding its ...



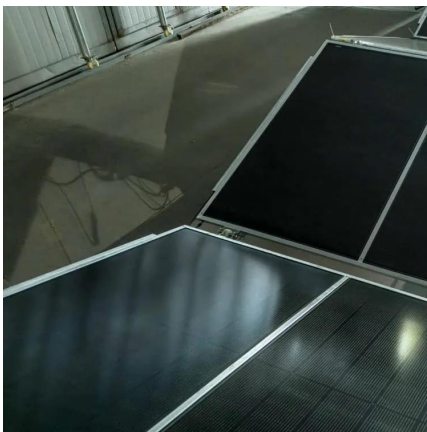
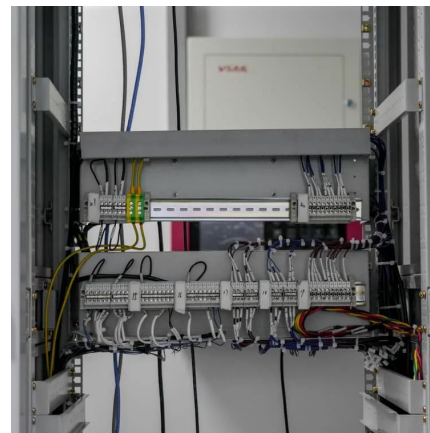


[Ncell to Expand 4G Network at Everest Base Camp](#)

In more recent news, Huawei is set to build an NPR 484 million (\$3.5m) data centre for Nepal Telecom, hoping to generate more income for the telco and the region.

Nepal Telecom starts the installation work of 4G LTE ...

Nepal Telecom (Ntc) has started the installation work of 4G LTE towers across the country. After the completion of the tower survey and the ...



Ncell Axiata deploys 338 towers to expand coverage ...

Across the last fiscal year, Ncell said that it has upgraded close to 1,450 sites in over 60 districts of the country, enhancing the 4G capacity. The ...

Nepal now has more than 16.6 Million telco subscribers.

The total subscriber base now stands at 16.6 million with an overall teledensity of 62.56 percent in June. Ncell, largest private GSM operator (from European Giant TeliaSonera ...



Ncell stations

Ncell has installed 338 more base transceiver stations during the last fiscal year, along with 338 new towers, expanding 4G coverage to 55 rural ...



[Ntc launches high-speed 4G network in](#)

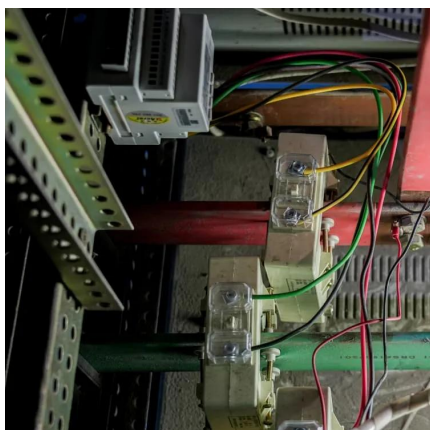
...

State-backed operator NTC has launched its 4G mobile network in Tripurasundari Municipality of Dolpa. The operator launched the fourth ...



Nepal Telecom installed 5 BTS towers in Dang in FY 2080/81

Nepal Telecom has installed a total of 5 BTS towers in Dang in the current fiscal year FY 2080/81. The move aligns with the company's plan for aggressive expansion and ...





The Base Station in Wireless Communications: The Key to ...

A single base station can cover one or more cells of a telecommunications network. The user's terminal uses the base station from which the signal is the strongest at a ...

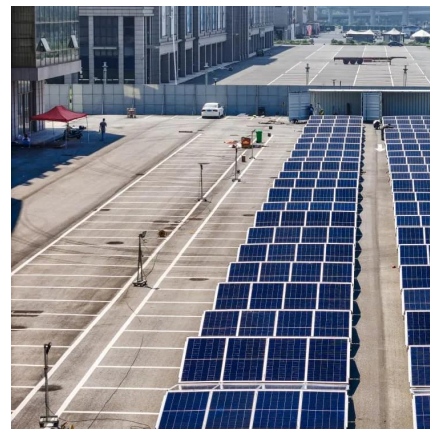


[Ncell to Expand 4G Network at Everest Base Camp](#)

The latest plan is to add more coverage at the base camp but with those base stations. Ncell says, more base stations at the base camp mean "significant improvements in ...

Mobile subscribers increase significantly in the last Fiscal year

Nepali Telecom operators added a significant mobile subscribers in the last FY 2075/76, with Ntc adding the highest number of new subscribers. According to the NTA report, ...



Comparison of Ntc vs Ncell 4G: Speed, Offers and ...

It has been more than 5 months of Ntc 4G launch (on January 1st) whereas Ncell launched its 4G in Kathmandu on June 1st. Both of the ...



Ncell stations

Ncell has installed 338 more base transceiver stations during the last fiscal year, along with 338 new towers, expanding 4G coverage to 55 rural areas. The company currently ...



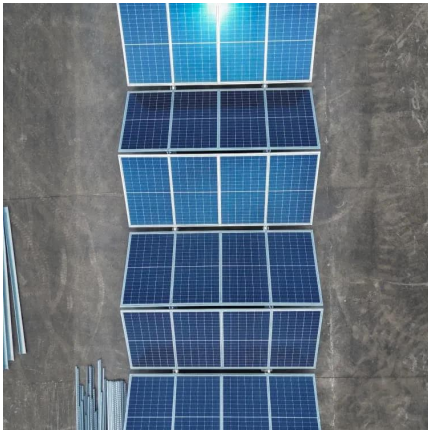
Telecommunications in Nepal

Now, there are only two operators, so Nepal's telecom industry is a duopoly market. Other competing telecom service providers like United Telecom (UTL), Smart Telecom are no more ...

Nepal Telecom Launches VoLTE , Process to Activate ...

Also, find the process to activate VoLTE on Ntc SIM in 2025. More smartphones now support Ntc VoLTE and the user base has significantly ...



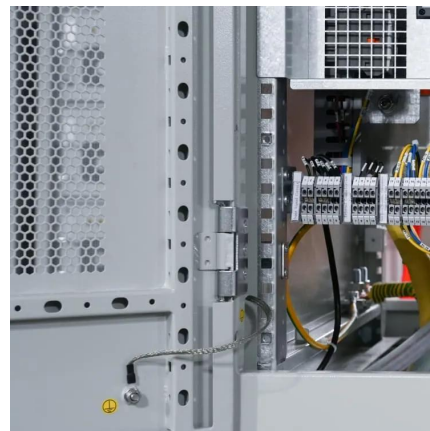


Base Stations

What is Base Station? A base station represents an access point for a wireless device to communicate within its coverage area. It usually ...

What Is A Base Station?

A base station is an integral component of wireless communication networks, serving as a central point that manages the transmission and ...



Contact Us

For catalog requests, pricing, or partnerships, please visit:
<https://www.talbert.co.za>