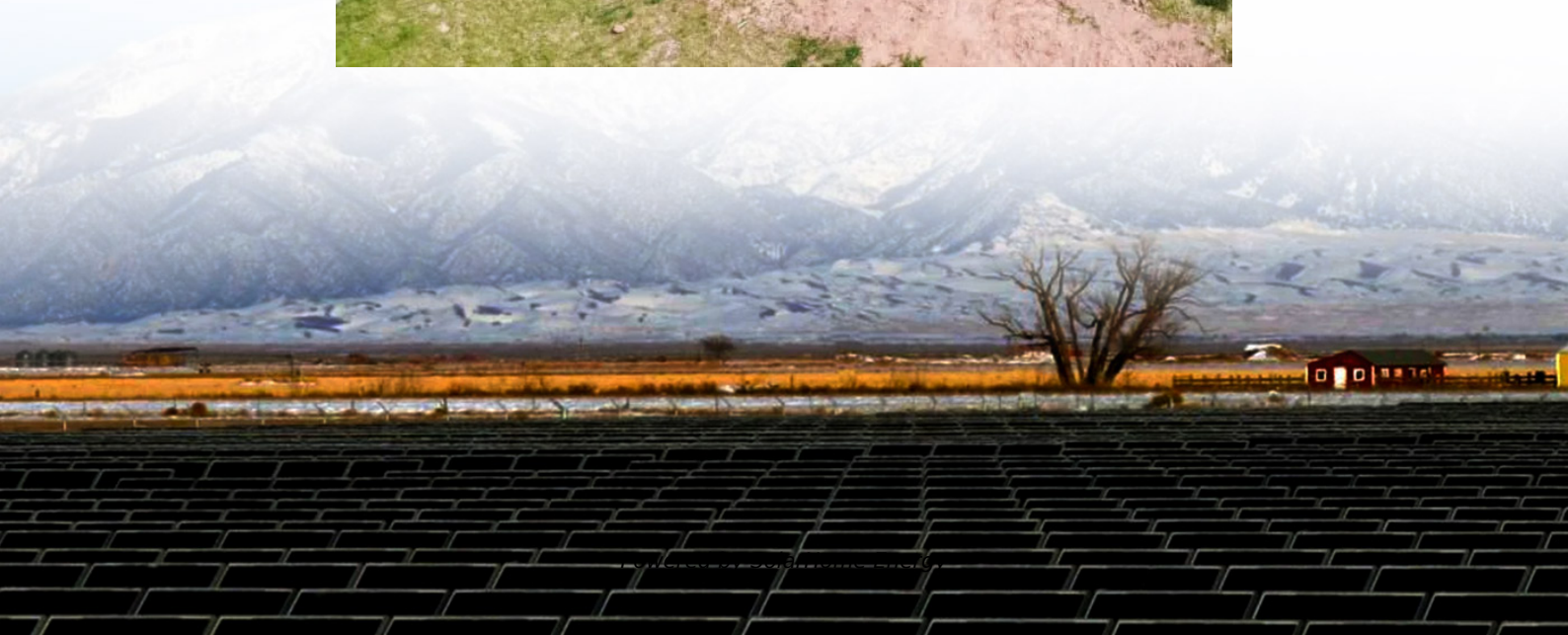


What type of building is a communication base station





Overview

In the area of wireless computer networking, a base station is a radio receiver/transmitter that serves as the hub of the local wireless network, and may also be the gateway between a wired network and the wireless network. It typically consists of a low-power transmitter and .

What is a base station in a cellular network?

A base station, also known as a cell site or cell tower, is an integral part of a cellular network. It serves as a central hub for communication between mobile devices and the network infrastructure. Here is a simplified explanation of how a base station works: 1.

What is a base station in telecommunications?

In telecommunications, a base station is a fixed transceiver that is the main communication point for one or more wireless mobile client devices. A base station serves as a central connection point for a wireless device to communicate.

What are cell towers & base stations?

Cell towers or base stations serve the same purpose that is to produce network signals for the consumers. The cells move from one tower to another depending on the coverage area or frequency. The user of the carrier receives the signals or cells from the cell towers that are generated by the base station.

How many types of base stations are there?

Macro cell, Micro cell, Pico cell and Femto cell are 4 types of base stations in wireless communication networks. Macrocell antennas must be properly mounted on ground-based masts, rooftops or other existing structures and at heights for an unhindered, clear view of the surroundings.

What is the difference between a base station and a cell tower?

The base stations are meant to improve the signal frequency and



communication between interconnected devices such as computers or smartphones. On the other hand, a cell tower distributes the signals over the defined area. Some towers are power boosters that enhance the signal strength.

How do base stations work?

Base stations use antennas mounted on cell towers to send and receive radio signals to and from mobile devices within their coverage area. This communication enables users to make voice calls, send texts, and access data services, connecting them to the wider world. Network Management and Optimization



What type of building is a communication base station



Communication tower foundation selection and design

According to the foundation design of two types of towers commonly used in the construction of communication base stations in Hebei ...

What is a base station?

What is a base station? In telecommunications, a base station is a fixed transceiver that is the main communication point for one or more ...



Base Station

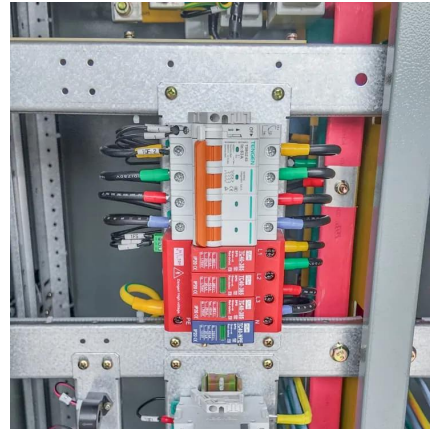
Sure, here are three main takeaways about Base Station in HTML numbered form:"`html A Base Station forms a critical part of any cellular network as it connects mobile ...

What is a base station?

A base station serves as a central connection point for a wireless device to communicate. It further connects the device to other networks or



devices, usually through ...



Types and Applications of Mobile Communication Base Stations

The construction of mobile communication base stations is an important part of the investment of mobile communication operators, and is generally carried out around factors ...



[Small Cell Networks and the Evolution of 5G](#)

This is the first blog post in a 2-part series looking at small cell base stations. Part 1 covers the basics of small cells and how they fit into the evolution of 4G and 5G. Part 2 will ...



[What is a Base Station in Telecommunications?](#)

What is a Base Station? A base station is a critical component in a telecommunications network. A fixed transceiver that acts as the central ...



Base Stations

Base stations form a key part of modern wireless communication networks because they offer some crucial advantages, such as wide coverage, continuous communications and ...

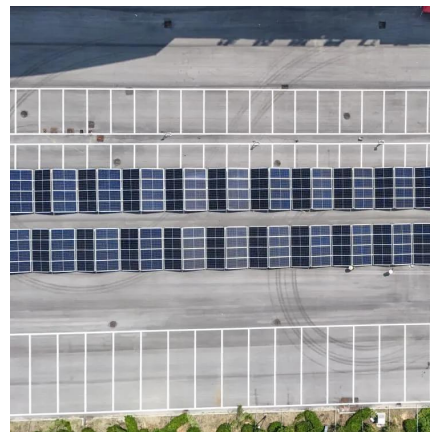


Mobile base station

A mobile base station, also called a base transceiver station (BTS), is a fixed radio transceiver in any mobile communication network or wide area network (WAN). The base station connects ...

What Is A Base Station?

In summary, the base station is the active component responsible for network communication, while the tower is the physical structure that supports the base station.



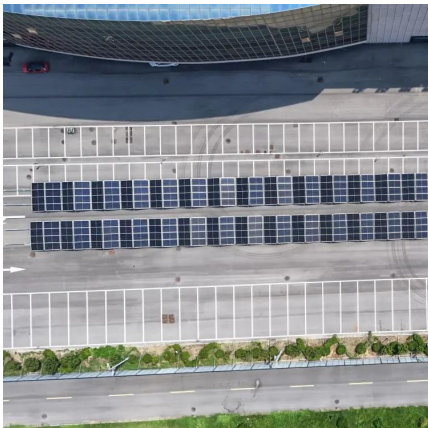
What is the difference between Base Station and Repeater

Base Station and Repeater are two important components in wireless communication systems. They play different roles in communication networks and have their own unique functions and ...



Base Stations and Cell Towers: The Pillars of Mobile Connectivity

Base stations and cell towers are critical components of cellular communication systems, serving as the infrastructure that supports seamless mobile connectivity. These ...



What is a Cell Site? Why cell sites are essential.

A cell site is also known as a cell tower, cell phone tower, cellular tower, communication tower, or mobile base station, and connects a given wireless communication network.

4 types of Base stations

Macro cell, Micro cell, Pico cell and Femto cell are 4 types of base stations in wireless communication networks. Macrocell antennas must be properly ...





Breaking Down Base Stations - A Guide to Cellular Sites

Let's start by taking a look at the different types of towers that you'll find at every cell site. A lattice or self-supporting tower uses a square or ...

Types and Applications of Mobile Communication ...

The construction of mobile communication base stations is an important part of the investment of mobile communication operators, and is ...



Base station

OverviewComputer networkingLand surveyingWireless communicationsSee also

In the area of wireless computer networking, a base station is a radio receiver/transmitter that serves as the hub of the local wireless network, and may also be the gateway between a wired network and the wireless network. It typically consists of a low-power transmitter and wireless router.

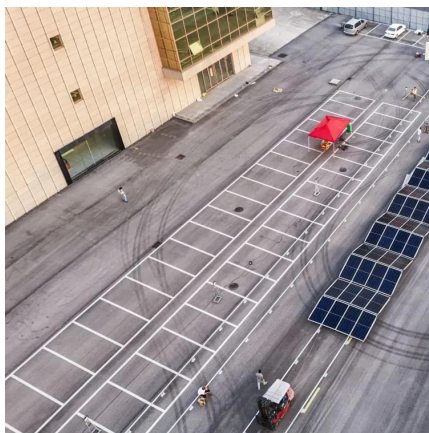
Breaking Down Base Stations - A Guide to Cellular Sites

Let's start by taking a look at the different types of towers that you'll find at every cell site. A lattice or self-supporting tower uses a square or triangular base and a triangular ...



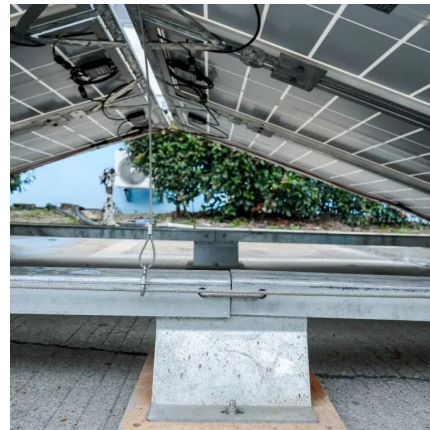
Base Stations and Cell Towers: The Pillars of Mobile ...

Base stations and cell towers are critical components of cellular communication systems, serving as the infrastructure that supports seamless ...



Cellular Networks, Cells, and Base Stations -- EITC

These base stations provide the cell with the network coverage which can be used for transmission of voice, data, and other types of content. In radio communications, a ...



Introduction of base station and Remote Radio Unit

Base Station, generally refers to the public mobile communication base station, the base station is used to provide signals to mobile phones. It ...





Satellite Communication Protocols and Ground Stations

In the intricate realm of satellite communication protocols and ground stations, the orchestration of data transmission and reception unfolds ...



Base station

In the area of wireless computer networking, a base station is a radio receiver/transmitter that serves as the hub of the local wireless network, and may also be the gateway between a wired ...

What is a Cell Site? Why cell sites are essential.

A cell site is also known as a cell tower, cell phone tower, cellular tower, communication tower, or mobile base station, and connects a given wireless ...



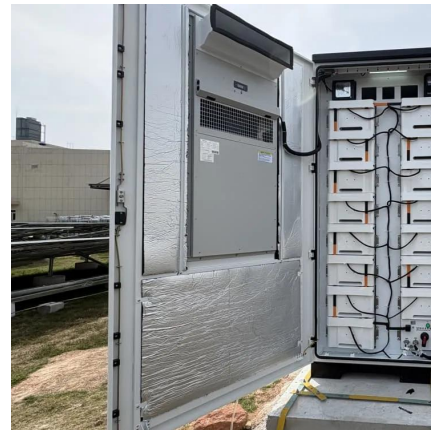
Base Station

In computing, a base station can refer to a variety of different types of devices that serve as a central hub for communication. Some examples of base stations in computing include: A ...



4 types of Base stations

Macro cell, Micro cell, Pico cell and Femto cell are 4 types of base stations in wireless communication networks. Macrocell antennas must be properly mounted on ground-based ...



Base Stations

Base stations form a key part of modern wireless communication networks because they offer some crucial advantages, such as wide ...

Unraveling the Mysteries of Cell Towers and Base Stations

A cell site, commonly known as a cell tower or cell base station, is the physical location that facilitates wireless communication for cellular-capable mobile devices.





What is a base station and how are 4G/5G base ...

Base station is a stationary trans-receiver that serves as the primary hub for connectivity of wireless device communication.

Base Station Antenna Types: A Comprehensive ...

Learn about the different types of base station antennas, their features, applications, and advantages. This guide will help you choose the best ...



Cell site

A cell site, cell phone tower, cell base tower, or cellular base station is a cellular -enabled mobile device site where antennas and electronic communications equipment are placed (typically on ...

Contact Us

For catalog requests, pricing, or partnerships, please visit:
<https://www.talbert.co.za>