

What systems does a wind power station have





What systems does a wind power station have



[Wind Power Plant Collector System Design ...](#)

Explore wind power plant collector system design considerations, including feeder topology, collector design, and interconnect requirements.

[Complete Guide To Wind Power Plants](#)

Wind power generation plants are usually inserted in the electric power system by connection to the primary distribution section or, in case of ...



Wind power

A wind turbine installation consists of the necessary systems needed to capture the wind's energy, point the turbine into the wind, convert mechanical rotation into electrical power, and ...

Wind Energy Systems: How It's Work, Types, Advantages and ...

Wind energy systems convert wind's kinetic energy into electricity, crucial for sustainable



energy. Discover the types, benefits, and challenges.



Wind turbine: what it is, parts and working , Enel Green Power

Read all about the wind turbine: what it is, the types, how it works, its main components, and much more information through our frequently asked questions.

Wind power , Description, Renewable Energy, Uses, ...

Modern commercial wind turbines produce electricity by using rotational energy to drive an electrical generator. They are made up of one or more blades attached to a rotor and ...



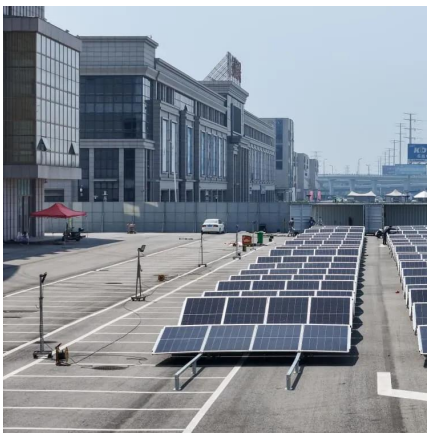
Setting Up a Wind Power Plant: All You Need to Know

Discover how to set up a wind power plant in India with expert insights on site selection, installation, and challenges.



Types of Wind Energy Systems

Types of Wind Energy Systems There are three main types of wind energy systems. These are:- grid-connected, grid-connected with battery backup, and ...



[Wind Energy Systems: How It's Work. Types, ...](#)

Wind energy systems convert wind's kinetic energy into electricity, crucial for sustainable energy. Discover the types, benefits, and challenges.

HOW DO WIND POWER STATIONS WORK

Why do battery storage power stations need a data collection system? Battery storage power stations require complete functions to ensure efficient operation and management. First, they ...



Wind Power Generation: How it Works and Its Advantages

Wind energy relies on kinetic energy, which is the energy associated with motion. Anything in motion possesses kinetic energy. Wind turbines harness the kinetic energy of ...



What are wind energy storage power stations?

What are wind energy storage power stations?
Wind energy storage power stations utilize advanced systems to harness and retain energy ...



Wind energy facts, advantages, and disadvantages

Engineers have to create systems that will start generating energy at relatively low wind speeds and also can survive extremely strong winds. A strong gale ...

Wind Power Plant

How a Wind Power Plant Works? Classification of Wind Turbines and Generators, Site Selection & Schemes of Electric Generation. What is a Wind Power Plant?





Wind Turbine Parts and Functions

The control system regulates the operation of the wind turbine, including starting and stopping the turbine, adjusting blade pitch, and optimizing power ...

Wind Turbine Parts and Functions

A wind turbine consists of five major and many auxiliary parts. The major parts are the tower, rotor, nacelle, generator, and foundation or base. Without all of ...



How Do Wind Turbines Work?

Wind turbines work on a simple principle: instead of using electricity to make wind--like a fan--wind turbines use wind to make electricity. Wind turns the propeller-like blades of a ...

Wind Power Plant: Diagram, Parts, Working & Advantages

In this post, you will learn about the wind power plant and its diagram, working, the importance of wind energy, advantages, application and more. Also, you can download the ...



Wind power , Description, Renewable Energy, Uses, ...

Modern commercial wind turbines produce electricity by using rotational energy to drive an electrical generator. They are made up of one or ...



Wind turbine: what it is, parts and working , Enel Green Power

A wind power station, often known as a wind farm, is a facility that converts wind energy into electricity. These stations are usually made up of ...



How a Wind Turbine Works

How a Wind Plant Works? Wind power plants produce electricity by having an array of wind turbines in the same location. The placement of a wind power plant is impacted by factors ...





National Wind Watch , The Grid and Industrial Wind Power

When the home system produces more power than is being used, the extra power flows into the grid and turns the meter in reverse, in effect selling power back to the utility. If Denmark and ...



Wind Turbine Parts and Functions

A wind turbine consists of five major and many auxiliary parts. The major parts are the tower, rotor, nacelle, generator, and foundation or base. Without all of these, a wind turbine cannot ...

[Wind Power Generation: How it Works and Its ...](#)

Wind energy relies on kinetic energy, which is the energy associated with motion. Anything in motion possesses kinetic energy. Wind ...



Types of Wind Energy Systems

Types of Wind Energy Systems There are three main types of wind energy systems. These are:- grid-connected, grid-connected with battery backup, and off-grid. Types of Wind Energy ...



Wind Power Station

Wind power stations are facilities that generate electricity by harnessing wind energy through the use of wind turbines, as evidenced by the increasing capacity of such stations in various ...



how does wind energy work

Wind energy is harnessed through the use of wind turbines, which convert the kinetic energy of wind into electricity. As the wind blows, it causes the turbine's blades to ...

Wind Power: What are the 3 Main Types of Wind Energy

Explore the three main wind energy types, wind turbine types, and how advanced battery technology ensures a steady, eco-friendly energy flow.



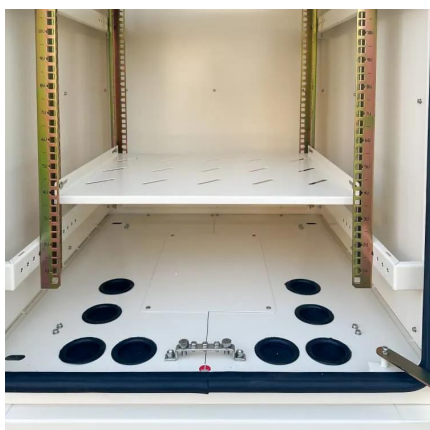


New York Wind Energy Guide for Local Decision Makers: ...

Because wind is a variable resource with changing speeds, power production levels can vary. The energy output of a facility can be measured over time, however, and expected yearly electricity ...

Wind Power Plant: Diagram, Parts, Working

In this post, you will learn about the wind power plant and its diagram, working, the importance of wind energy, advantages, application and ...



How Do Wind Power Stations Work? A Detailed Look Inside

A wind power station, often known as a wind farm, is a facility that converts wind energy into electricity. These stations are usually made up of many wind turbines strategically ...

Contact Us

For catalog requests, pricing, or partnerships, please visit:
<https://www.talbert.co.za>