

## **What size is a 665w photovoltaic panel**





## Overview

---

What are the different sizes of solar panels?

There are 3 standardized sizes of solar panels, namely: 60-cell solar panels size. The dimensions of 60-cell solar panels are as follows: 66 inches long, and 39 inches wide. That's basically a 66×39 solar panel. But what is the wattage?

That is unfortunately not listed at all. 72-cell solar panel size.

How many Watts Does a portable solar panel generate?

Portable solar panels are smaller, often half the size of regular solar arrays. Solar panels for homes average 250 to 400 watts. Many portable solar panels for RV are in the 100 to 300 watt range. The physical size of the panels often correlate to the watts, the bigger the panels the more watts it can generate.

How many solar panels does a 6 kilowatt solar system need?

If you install a 6 kilowatt solar panel, you'll require 20 cells. If they are average sized cells, the system will be 13 feet long and 27 feet wide, or 352 square ft. This measurement assumes all the panels are lined on your roof adjacent. Before buying any solar panel, determine how much power / watts you will need.

How much do portable solar panels weigh?

Portable solar panels weigh from 10 to 30 lbs. The 5 watt panels are the lightest at 2 to 5 lbs. These lightweight solar panels are used to charge mobile phones and other devices. A single person can lift portable solar panels without any problems.

How does solar panel size affect a home?

Solar panel size directly affects: Choosing the right dimensions ensures that your system fits your space while generating enough electricity to meet your needs. Let's explore the most common solar panel size dimensions available



today: 1. Residential Solar Panels These are the most popular panels for homes. 2. Commercial Solar Panels.

How many kW is a 6 kW solar array?

Multiply your solar array size by 1.2 (120%) to account for this:  $6 \text{ kW} \times 1.2 = 7.2 \text{ kW}$  solar array Step 5: Full or Partial Offset?

Most grid-tie homeowners choose to offset 100% of their energy needs with solar. But it is also possible to start with a smaller system for partial offset, and then expand down the line as the budget allows for it.



## What size is a 665w photovoltaic panel

---



### Solar Panel Wire Size (Cable Gauge + Calculations ...

The sizing of the cables for solar systems is critical to the performance and safety of the system. Most household fires result from ...

### [Solar Panel Sizes & Dimensions UK \(2025\)](#)

Discover standard solar panel sizes, dimensions, and output to help you choose the right system for your roof, home size, and energy needs. Solar ...



### Understanding Solar Panel Dimensions In 2025: A ...

Explore the most common solar panel dimensions in 2025, including residential and commercial sizes. Learn how solar panel size ...

### [My Solar 132 Cells 665W 665 Watt Wattage ...](#)

The main difference of the solar panel price is between Tier 1 Solar Panel and not Tier 1 Solar



Panel. If you order the mainstream solar panel ---  
cell size ...



## Solar Panel Size & Weight Guide [+ Charts] - Solartap

Standard residential solar panels measure 66 inches by 40 inches, or a little over 5 feet long and 3 feet wide. Each panel therefore takes up ...

## [Solar Panel Sizes and Wattage Explained](#)

Solar panel size per kilowatt and wattage calculations depend on PV panel efficiency, shading, and orientation.



## GreenWatts 665W Solar Panel 144 Cell Bifacial HS66-F-665-MN ...

GreenWatts 550W Solar Panel (144 Cell)  
Designed for utility-scale projects, the 550W panel offers unmatched power output and efficiency. It features 144 monocrystalline ...







### [Solar panels mono 650W 655W 660W 665W 670W ...](#)

Browse best supplier of Solar panels mono 650W 655W 660W 665W 670W solar panel for home and panel solar at sunroverpv . Our products have been ...



### [How to Size a Solar System \[Step-by-Step Guide\]](#)

Learn how to size a solar system for your home. Here's our step-by-step guide on sizing a solar system that meets your energy needs.

### **PVWatts Calculator**

NREL's PVWatts ® Calculator Estimates the energy production of grid-connected photovoltaic (PV) energy systems throughout the world. It allows homeowners, small building owners, ...



### **Trina Solar , Vertex 600W TSM-DE20**

Vertex 605W+ TSM-DE20 Based on the 210mm large-size silicon wafer and monocrystalline PERC cell, the Vertex comes with several innovative design ...



## Standard Solar Panel Sizes And Wattages (100W-500W ...

The goal here is to get to the average solar panel size by wattage. You can find typical dimensions of 100W, 150W, 170W, 200W, 220W, 300W, 350W, 400W, and 500W solar ...



## Solar Panel Bifacial Half-cut Monocrystalline 665 Wp

SOLAR PANEL 665 WATTS , TRINA SOLAR , Bifacial Half-cut , Monocrystalline , 132 Cells PV Module , Power tolerance 0/+5W , L 2384 mm, W 1303 mm, D ...

## Solar Panel Bifacial Half-cut Monocrystalline 665 Wp

SOLAR PANEL 665 WATTS , TRINA SOLAR , Bifacial Half-cut , Monocrystalline , 132 Cells PV Module , Power tolerance 0/+5W , L 2384 mm, W 1303 mm, D 33 mm , 38.30 kg , Material ...



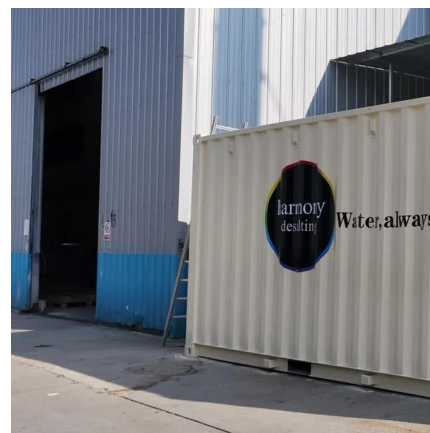


### [Solar Panel Size Guide \(with 4 Charts\)](#)

Solar panel sizes are measured in two ways: watt output and physical dimensions. Physical dimensions refer to the height, length and width of the solar array. The wattage refers to how ...

#### **DT-M**

35mm(1.38 inches) Anodized Aluminium Alloy Frame J-Box IP 68 rated Cables Photovoltaic Technology Cable 4.0mm (0.006 inches ), Portrait: 280/280 mm(11.02/11.02 inches) ...



#### **LONGi Solar , Hi-MO X10 Scientist LR7-72HVD 640-665M , Solar Panel**

LONGi Solar Technology Co., Ltd. Solar Panel Series Hi-MO X10 Scientist LR7-72HVD 640-665M. Detailed profile including pictures, certification details and manufacturer PDF

### [Solar Panel Sizes and Wattage Explained](#)

Moreover, solar panel size per kW and watt calculations are estimates that may vary depending on panel efficiency, shading, and ...





## 15kW Solar System: Price, Load Capacity, How Big, ...

There are also 18 kW solar systems if you need a different sized system. How Many Batteries Needed For a 15kW Solar Panel System? The ...



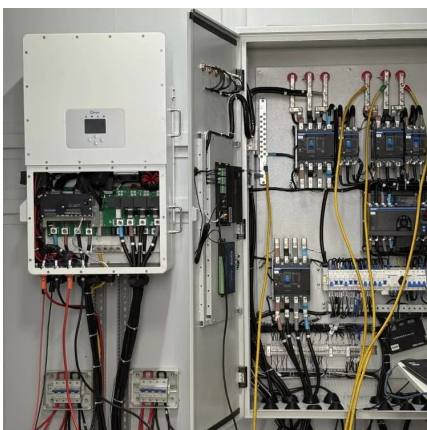
## [CANADIAN SOLAR 665W HIKU7 CS7N-665MS](#)

The HiKu7 CS7N-665MS is a Mono PERC 665W Monocrystalline Solar Panel by Canadian Solar. HIKU7 CS7N-665MS is a high-efficiency solar ...



## 665W photovoltaic panel specifications and dimensions

The BiHiKu7 CS7N-640-670MB-AG solar panel by Canadian Solar is an advanced, high-performance solar module designed to generate more energy per module than standard





## Understanding Solar Panel Dimensions In 2025: A Complete Size ...

Explore the most common solar panel dimensions in 2025, including residential and commercial sizes. Learn how solar panel size dimensions affect power, installation, and ...



### LONGi Hi-MO X10 LR7-72HVD Solar Panel High Efficiency 650W 660W 665W

LONGi Hi-MO X10 LR7-72HVD Solar Panel High Efficiency 650W 660W 665W Photovoltaic Monocrystalline Solar Panel No reviews yet Shenzhen Meisongmao Industrial Co., Ltd. 10 yrs CN

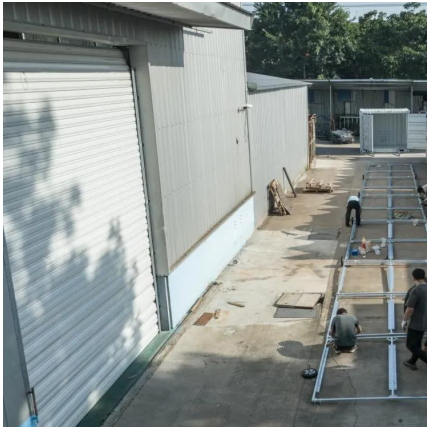
### [Solar Panel Sizes and Wattage Explained](#)

Moreover, solar panel size per kW and watt calculations are estimates that may vary depending on panel efficiency, shading, and orientation. For specific sizing and ...



### Solar Panel Size & Weight Guide [+ Charts] - Solartap

Standard residential solar panels measure 66 inches by 40 inches, or a little over 5 feet long and 3 feet wide. Each panel therefore takes up around 18 square feet. Commercial ...



## Hi-Mo X10: Longi Unveils 665 W HPBC Photovoltaic ...

Longi Unveils 665 W HPBC Photovoltaic Modules with 24.8% Efficiency Chinese solar module manufacturer Longi has introduced its latest ...



## 665 Watt Solar panels for sale , Prices, dimensions, weight, ...

665 Watt Solar panels' range of prices, dimensions, sizes, voltage output, specifications datasheets Ranges of information Voltage: 36.4V ~ 39V Amp: 14.51A ~ 18.27A

## [Standard Solar Panel Sizes And Wattages \(100W ...](#)

The goal here is to get to the average solar panel size by wattage. You can find typical dimensions of 100W, 150W, 170W, 200W, 200W, 220W, 300W, 350W, ...





## Contact Us

---

For catalog requests, pricing, or partnerships, please visit:  
<https://www.talbert.co.za>