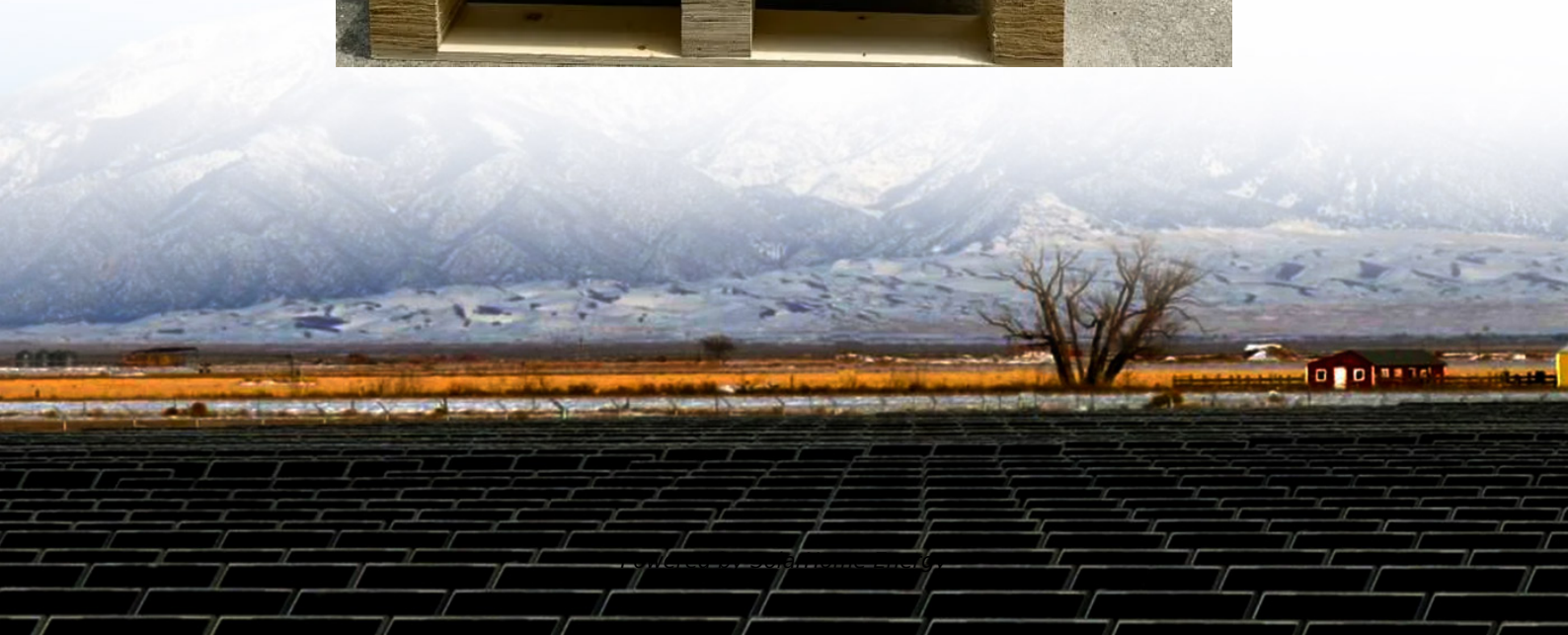


# **What size inverter should I use for a 49kw**





## Overview

---

What size solar inverter do I Need?

A 4.5 kW array (or ten 450-watt solar panels) would just about cover your consumption. The type of solar panels you choose can also impact the size of the inverter you need. Different types of solar panels have different wattage ratings and efficiency levels. The three main types of solar panels are monocrystalline, polycrystalline, and thin film.

What is a solar inverter sizing calculator?

A solar inverter sizing calculator is a tool used to determine the appropriate size of a solar inverter for your solar power system based on the total power consumption of connected appliances and the size of your solar panel array. It ensures the inverter can handle the peak loads efficiently.

Do I need an inverter size chart?

The need for an inverter size chart first became apparent when researching our DIY solar generator build. Solar generators range in size from small generators for short camping trips to large off-grid power systems for a boat or house. Consequently, inverter sizes vary greatly.

How much power does an inverter need?

The continuous power requirement is actually 2250 but when sizing an inverter, you have to plan for the start up so the inverter can handle it. Third, you need to decide how long you want to run 2250 watts. Let's say you would like to power these items for an eight-hour period.

How to choose a power inverter?

Second, select an inverter. For this example, you will need a power inverter capable of handling 4500 watts. The continuous power requirement is actually 2250 but when sizing an inverter, you have to plan for the start up so the inverter can handle it. Third, you need to decide how long you want to run



2250 watts.

How to calculate inverter size?

Using the Inverter Size Calculator is quick and easy. You'll need three inputs:  
Total Wattage (W): This is the total power consumption of all the appliances or devices you plan to run through the inverter. Safety Factor: A multiplier to ensure some buffer above your actual power requirement. Typically ranges from 1.1 to 1.5.



## What size inverter should I use for a 49kw

---



### What Size Inverter Do I Need?

But whether you need a big inverter or a small inverter, you can figure out the appropriate size by taking a look through our inverter size calculator. First, how much power does a power inverter ...

### What Size Inverter Will Run a House? - GC Solar KZN

What Size Inverter Will Run a House? Choosing the right size inverter for your home is essential to ensuring that your energy needs are met efficiently. In ...



### What Size Solar Inverter Do I Need? Experts Break It Down

Picking the right solar inverter isn't rocket science, but it's not a wild guess either. Match your inverter size to your solar panel output, leave a little headroom, and don't cheap ...

### What Size Wire For Any Inverter: Inverter Wire Size Chart

Choosing the right cables for your inverter can be downright confusing. This guide helps you



find the right size wire for any sized inverter.



## How to Decide Solar Inverter Capacity for Your Home

The inverter should match your solar panel system's size without the need for oversizing. Off-grid systems: If you're opting for an off-grid setup, you'll need a larger inverter to manage peak ...

## INVERTER SIZE CALCULATOR

How big should a solar inverter be? Most installations slightly oversize the inverter, with a ratio between 1.1-1.25 times the array capacity, to account for these considerations. The size of the ...



## [The Only Inverter Size Chart You'll Ever Need](#)

Picking the right solar inverter isn't rocket science, but it's not a wild guess either. Match your inverter size to your solar panel output, leave a little ...





## What size inverter do I need for a refrigerator?

Inverter Wattage ratings required to run a refrigerator based on its size (capacity). These estimates should give you a pretty good idea of the inverter size you need, but I still ...



## Solar Inverter Sizing Calculator: Important Guide

For a 10 kW solar system, an inverter size between 8 kW to 12.5 kW is typically recommended. However, specific requirements may vary based on panel performance, ...

## **Inverter Size Calculator**

$$\text{Inverter Size (W)} = (\text{Total Wattage} \times \text{Safety Factor}) \div \text{Inverter Efficiency}$$
 This ensures that the inverter can handle both the load and the efficiency losses. Let's walk through a simple ...



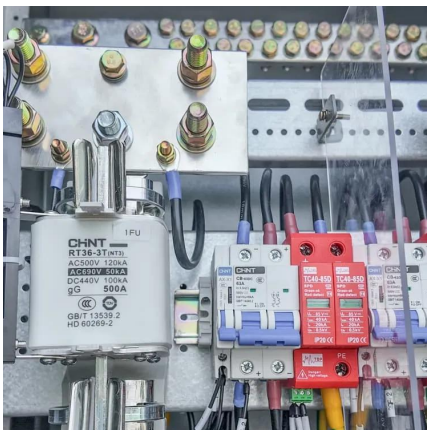
## **How to Choose the Right Size Solar Inverter: Step-by-Step with ...**

This guide walks you through calculating inverter size based on panel capacity, power usage, and safety margins. We use real examples from installations in Texas and ...



## What Size Inverter For 10kw Solar System?

What Size Inverter For 10kw Solar System: For a 10kW solar system, you typically need an inverter with a capacity of around 10,000 to 13,000 watts to ...



## **Solar Panel Inverter Size Calculator: Know What You ...**

For this reason, you should choose a solar inverter that's similar in size to the DC rating of your solar array, the collective number of panels ...

## **Breaker Sizing for Inverter Output , Information by Electrical**

For example, a SolarEdge 10kW inverter has an output of 42A at 240V. Since the continuous output of the inverter is limited to 42A, could I use a 45A or 50A OCPD? Or do I ...





## Fuse Size Calculator - Accurate & Easy Fuse Selection

Fuse Size Calculator This fuse size calculator helps you determine the appropriate fuse size based on your input parameters. To use the calculator, simply enter the following ...

## [Solar Inverter Sizing Calculator: Important Guide](#)

For a 10 kW solar system, an inverter size between 8 kW to 12.5 kW is typically recommended. However, specific requirements may vary ...



## Solar Inverter Sizing Guide for Maximum Efficiency

This article explains how to calculate your inverter size, what affects it, and how to avoid costly mistakes, especially when using high ...

## How do you properly size an inverter for a house? : r/solar

The AC output will always be at most the size of the inverter, not the DC input to the inverter. But that's just power -- power over time is energy which is what you use. I very very strongly ...





## How to calculate the size of inverter needed for your ...

WHAT SIZE OF INVERTER DO I NEED FOR MY HOME? A lot of people want a power backup or solar system but don't know how to calculate ...



## Understanding Inverter Power Ratings: kW vs kVA ...

kW (kilowatts) measures real power--what actually powers your appliances. kVA (kilovolt-amps) measures apparent power--the total power the inverter ...



## Solar Inverter Sizing Guide for Maximum Efficiency , Mingch

This article explains how to calculate your inverter size, what affects it, and how to avoid costly mistakes, especially when using high-efficiency solutions like MINGCH Electrical's ...





## Choosing the Right Inverter: What Size Inverter Do I Need?

To determine the appropriate size, you can calculate the combined wattages of the items you plan to run using the inverter. For example, if you want to power a refrigerator (600 ...

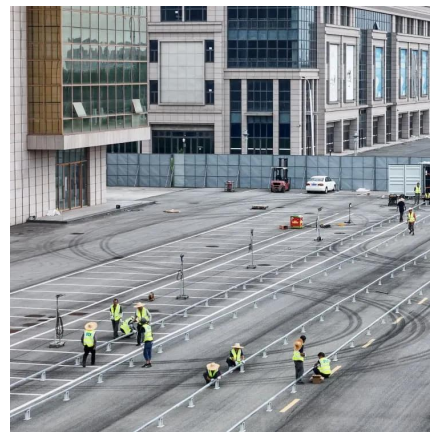


### [The Only Inverter Size Chart You'll Ever Need](#)

We have created a comprehensive inverter size chart to help you select the correct inverter to power your appliances.

## What Size Inverter Do I Need?

But whether you need a big inverter or a small inverter, you can figure out the appropriate size by taking a look through our inverter size calculator. First, ...



### [kW to Cable Size Chart and Amp Chart](#)

Our kW to Cable Size and Amp Chart can help you determine the appropriate cable size for your electrical projects. Easily convert power (kW) to ...



## Solar Panel Inverter Size Calculator: Know What You Need , Angi

For this reason, you should choose a solar inverter that's similar in size to the DC rating of your solar array, the collective number of panels feeding into the inverter. The DC ...



## [Inverter Sizing in Wind Systems Calculator](#)

Calculate the perfect inverter size for your wind system with our easy-to-use Inverter Sizing Calculator. Optimize efficiency and performance today!

## Microsoft Word

3 phase supply can take the following configurations: a. Use a 3 phase 380 Volt inverter and supply all 3 phases b. Use 3 x single phase inverters that can work together to produce 380V

...





### [How To Size A Solar Inverter in 3 Easy Steps](#)

In this guide, we share 3 easy steps on how to size a solar inverter correctly. We explain the key concepts that determine solar inverter sizing including your power needs, the type and number ...

## Contact Us

---

For catalog requests, pricing, or partnerships, please visit:  
<https://www.talbert.co.za>