

What size inverter should I use for a 105kw photovoltaic panel





Overview

This guide breaks down what size solar inverter you actually need—so your setup runs smooth, efficient, and stress-free from day one. What Size Solar Inverter Do I Need?

A solar inverter should closely match your solar system's output in kW—typically within 80% to 120% of your total panel capacity. What size solar inverter do I Need?

A 4.5 kW array (or ten 450-watt solar panels) would just about cover your consumption. The type of solar panels you choose can also impact the size of the inverter you need. Different types of solar panels have different wattage ratings and efficiency levels. The three main types of solar panels are monocrystalline, polycrystalline, and thin film.

What is a solar inverter sizing calculator?

A solar inverter sizing calculator is a tool used to determine the appropriate size of a solar inverter for your solar power system based on the total power consumption of connected appliances and the size of your solar panel array. It ensures the inverter can handle the peak loads efficiently.

Why are solar inverters sized lower than kilowatt peak?

Inverters are usually sized lower than the kilowatt peak (kWp) of the solar array because solar panels rarely achieve peak power. The solar array-to-inverter ratio is calculated by dividing the direct current (DC) capacity of the solar array by the inverter's maximum alternating current (AC) output.

How many kW can a solar inverter generate?

Total capacity = $20 \times 500 = 10,000$ watts or 10 kW The industry standard suggests that the inverter's capacity should be between 80% to 125% of the solar panels' capacity. For example, if your panels generate 10 kW: Minimum inverter size = $10,000 \times 0.8 = 8$ kW Maximum inverter size = $10,000 \times 1.25 = 12.5$ kW.



Should your inverter size match your solar panel size?

Match your inverter to your lifestyle, not just your roof. If you're running a fridge, home office, and PS5 all day, size accordingly. If you're barely home, go leaner. Here's the cheat code: your inverter size should usually match your solar panel system's size in kilowatts.

What is a good solar inverter ratio?

A ratio of 1.0 means the inverter matches the solar panel capacity exactly. Ratios of 1.1 to 1.2 are often used to maximize energy production without exceeding the inverter's capacity during peak hours.



What size inverter should I use for a 105kw photovoltaic panel



What size inverter do I need for solar panels

Solar Panel Output: Factor in the output from your solar panels, as the inverter should be matched to the total wattage generated by your solar ...

What Size Inverter You Need (Calculations + Battery)

The size of the inverter required will be determined by the total wattage of the appliances you need to operate and the time they need to run. You also need to add a bit ...



The Only Inverter Size Chart You'll Ever Need

We have created a comprehensive inverter size chart to help you select the correct inverter to power your appliances.

What Size Inverter You Need (Calculations + Battery)

The size of the inverter required will be determined by the total wattage of the



appliances you need to operate and the time they need to run. ...



Choosing the Right Size Inverter for Your Solar ...

As a general rule of thumb, you'll want to match your solar panel wattage. So if you have a 3000 watt solar panel system, you'll need at least a 3000 watt ...



Solar Battery Size Calculator: What size battery do I ...

What size solar panel array do you need for your home? And if you're considering battery storage, what size battery bank would be most ...



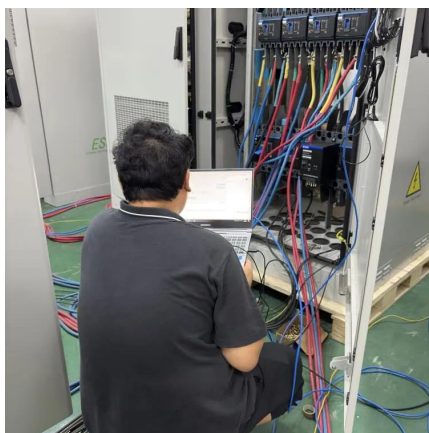
Size your solar system

Because the panels are only rarely generating at their full rated capacity, this can be a good way to get the best value from the inverter and often makes good economic sense. Talk to your ...



PVWatts Calculator

NREL's PVWatts ® Calculator Estimates the energy production of grid-connected photovoltaic (PV) energy systems throughout the world. It allows homeowners, small building owners, ...



What Size Inverter Do I Need for My Solar Panel ...

Inverters are the heart of a solar PV system and come in a range of sizes (capacities). But how do you know your inverter is correctly sized for ...

Solar Panel Inverter Size Calculator: Know What You ...

Planning to install solar panels? You'll need a solar inverter. ...



Solar inverter size: Calculate the right size for your inverter

Inverters work most efficiently when operating near their maximum capacity and are typically sized to be roughly the same size as your solar panels. Inverters are usually sized lower than ...



Solar Panel Inverter Size Calculator: Know What You Need , Angi

Planning to install solar panels? You'll need a solar inverter. Follow this guide to calculate the best solar panel inverter size for your system.



[What Size Inverter For 10kw Solar System?](#)

Arranged according to size scale and efficient likely 10kW inverter for a system of this size This option prevents the solar panel from leading to energy loss as ...

[What Size Inverter Do I Need for Solar Panels?](#)

Factors you should consider when sizing your solar inverter 1. The capacity of your solar panel array. This is the most important factor you should ...





[Solar Inverter Sizing Calculator: Important Guide](#)

This comprehensive guide will walk you through solar inverter sizing, explain its importance, and help you understand how to use a solar inverter sizing calculator effectively.

[Inverter Size Calculator - self2solar](#)

Choosing the right inverter size is essential for a reliable and efficient solar power system. Our Inverter Size Calculator simplifies this task ...



Solar Inverter Sizing Based on System Power Calculator

Calculate the perfect solar inverter size for your system power with our easy-to-use Solar Inverter Sizing Calculator. Optimize efficiency and performance.

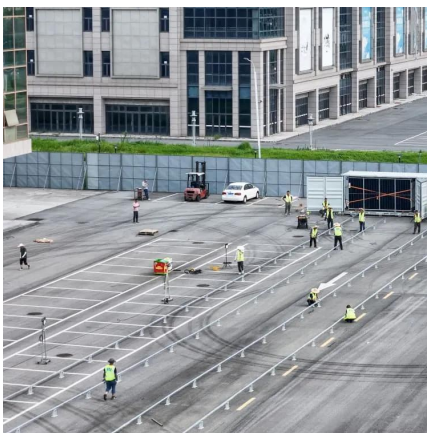
[How To Size A Solar Inverter in 3 Easy Steps](#)

What Size Solar Inverter Do I Need? A solar inverter should closely match your solar system's output in kW--typically within 80% to 120% of your ...



[Solar Cable Size Selection Guide For PV Plants](#)

Solar power cables are responsible for transporting electricity from panels to inverters and their connected components. In this solar cable size selection guide, we will ...



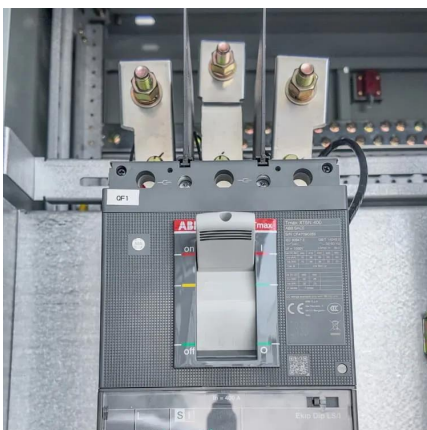
How to select an inverter

What size of inverter do I need? As a very rough rule of thumb - same as your solar panel system; for a 6 kilo Watt peak (kWp) solar panel ...



What Size Inverter Do I Need for a 100 Watt Solar Panel

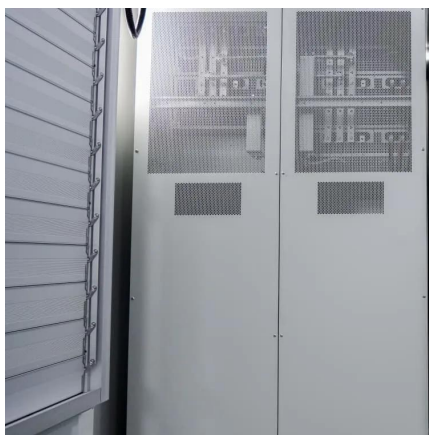
Wondering what size inverter you need for a 100 watt solar panel? Here's how to find the right inverter and calculate its size.





[How Many Panels In 1kW, 3kW, 5kW, 10kW, 20kW ...](#)

Number Of Panels = (Solar System Size In kW × 1000) / Solar Panel Wattage For example, if you want to install a 3kW system, and are wondering how many ...



[Solar Inverter Sizing Calculator: Important Guide](#)

This comprehensive guide will walk you through solar inverter sizing, explain its importance, and help you understand how to use a solar ...

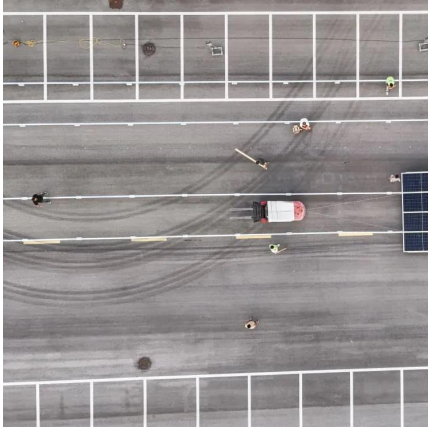
What Size Solar Inverter Do I Need? Experts Break It Down

What Size Solar Inverter Do I Need? A solar inverter should closely match your solar system's output in kW--typically within 80% to 120% of your total panel capacity.



How to Choose the Right Size Solar Inverter: Step-by-Step with ...

Wondering what size solar inverter do I need for your solar system? This guide walks you through calculating inverter size based on panel capacity, power usage, and safety ...



Solar inverter size: Calculate the right size for your ...

Inverters work most efficiently when operating near their maximum capacity and are typically sized to be roughly the same size as your solar panels. Inverters ...



[How To Size A Solar Inverter in 3 Easy Steps](#)

In this guide, we share 3 easy steps on how to size a solar inverter correctly. We explain the key concepts that determine solar inverter sizing including your power needs, the type and number ...

Solar Inverter Size Calculator , Inverter Sizing Tool

Calculate the optimal inverter size for your solar system. Determine the right inverter capacity based on panel array size, system configuration, and power requirements.



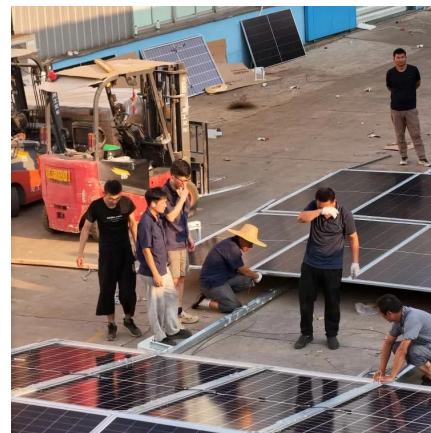


What Size Inverter Do I Need?

Learn how to calculate what size inverter you need with The Inverter Store's handy guide. We make the process straightforward for you to fit your exact needs.

[Inverter Size Calculator - self2solar](#)

Choosing the right inverter size is essential for a reliable and efficient solar power system. Our Inverter Size Calculator simplifies this task by accurately estimating the ...



Contact Us

For catalog requests, pricing, or partnerships, please visit:
<https://www.talbert.co.za>