

What size inverter is suitable for a 120a lithium battery





Overview

To recharge your battery from time to time you would need the right size solar panel to do the job! Read the below article to find out the suitable solar panel size for your battery bank .

Note!The battery size will be based on running your inverter at its full capacity
Assumptions 1. Modified sine wave inverter efficiency: 85% 2. Pure sine wave inverter efficiency:90% 3. Lithium Battery:100% Depth of discharge limit 4. lead-acid.

To calculate the battery capacity for your inverter use this formula Inverter capacity (W)*Runtime (hrs)/solar system voltage = Battery Size*1.15 Multiply the result by 2 for lead-acid type.

You would need around 24v150Ah Lithium or 24v 300Ah Lead-acid Batteryto run a 3000-watt inverter for 1 hour at its full capacity .

Here's a battery size chart for any size inverter with 1 hour of load runtime
Note! The input voltage of the inverter should match the battery voltage. (For example 12v battery for 12v.

Answer: To choose the right inverter for lithium batteries, match the inverter's voltage and capacity to your battery's specifications, prioritize pure sine wave inverters for efficiency, ensure compatibility with lithium battery chemistry, and factor in safety features like overload protection.Can a lithium battery run a large inverter?

Bottom line, if you want to run large inverter loads above 1000w on a lithium battery, make sure you choose an lithium battery that is designed for larger inverters or a system that can be paralleled safely with active balancing between the connected batteries.

What voltage should a 12V inverter run on?

The input voltage of the inverter should match the battery voltage. (For example 12v battery for 12v inverter, 24v battery for 24v inverter and 48v battery for 48v inverter
Summary What Will An Inverter Run & For How Long?



What is the recommended battery size for an inverter?

Interpreting Results: Once you input the required data, the calculator will generate the recommended battery size in ampere-hours (Ah). For instance, if your power consumption is 500 watts, the usage time is 4 hours, and the inverter efficiency is 90%, the calculator might suggest a battery size of approximately 222 Ah.

Why should you use the calculate battery size for inverter calculator?

Using the Calculate Battery Size for Inverter Calculator can significantly streamline your power management process. This tool is particularly beneficial in scenarios where precise power estimation is critical, such as designing renewable energy systems, ensuring backup power in off-grid locations, or optimizing battery usage for cost efficiency.

How much battery do I need to run a 3000-watt inverter?

You would need around 24v 150Ah Lithium or 24v 300Ah Lead-acid Battery to run a 3000-watt inverter for 1 hour at its full capacity Here's a battery size chart for any size inverter with 1 hour of load runtime Note! The input voltage of the inverter should match the battery voltage.

How much battery should a 500 watt inverter use?

For instance, if your power consumption is 500 watts, the usage time is 4 hours, and the inverter efficiency is 90%, the calculator might suggest a battery size of approximately 222 Ah. Practical Tips: Ensure all input values are accurate to avoid skewed results.



What size inverter is suitable for a 120a lithium battery



[Sizing the Right Inverter for 100ah Battery](#)

In this guide, I will walk you through the process of sizing the right inverter for a 100ah battery along with an inverter size chart.

[The Only Inverter Size Chart You'll Ever Need](#)

We have created a comprehensive inverter size chart to help you select the correct inverter to power your appliances.



[What size solar panel to charge a 120 Ah battery?](#)

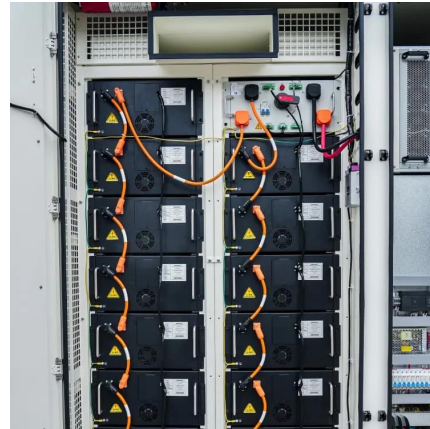
In this post, we take 12v 100Ah and 12v 120Ah battery as example to explain how to calculate what size and how many solar panels to charge solar batteries.

[Lithium Batteries: What Size Inverter Can I Use?](#)

Bottom line, if you want to run large inverter loads above 1000w on a lithium battery, make



sure you choose an lithium battery that is designed for larger inverters or a system that can be ...



How Do You Choose the Right Inverter Size for Your Specific ...

Matching the inverter size to a 200Ah lithium battery is crucial for optimal performance and efficiency. An appropriately sized inverter ensures that it can handle the ...



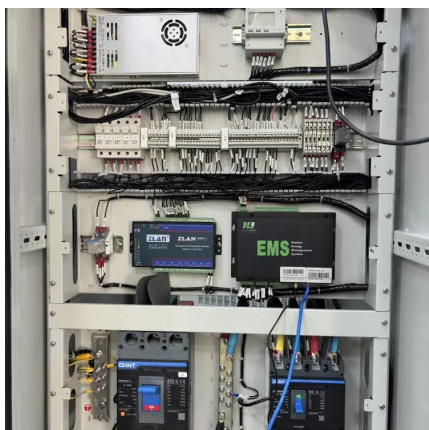
Calculate Battery Size For Any Size Inverter (Using Our Calculator)

To recharge your battery from time to time you would need the right size solar panel to do the job! Read the below article to find out the suitable solar panel size for your battery bank



What Solar Panel Size Do You Need for a 120Ah Battery?

A lot of campers go for a standard 100Ah lithium battery, but if you want a little extra output, a 120Ah battery is also a good option. Now the question would be, what size of ...





3600W Solar Inverter 24VDC to 110V/120VAC, Built-in 120A ...

3600W Solar Inverter 24VDC to 110V/120VAC, Built-in 120A MPPT Controller, 3600 watt Pure Sine Wave Power Inverter, Max.PV Input 4200W, 500V, fit for 24V Lead ...



[What Inverter Size is Best for a 100Ah Battery?](#)

When setting up a solar, off-grid, or backup power system, understanding the compatibility between your battery size and inverter capacity is essential for both performance and safety. A ...

[How Do I Match My Battery Size to My Inverter?](#)

A general rule is that for every 1000 watts of inverter capacity, you should have at least 100Ah of battery capacity. For instance, if you have a 2000W inverter, you should ideally have at least ...



[What Size Inverter Can I Run Off a 200Ah Battery?](#)

When determining what size inverter can be run off a 200Ah battery, it's essential to consider both the power requirements of your devices and the characteristics of the battery itself. A typical ...



Best Inverter For Lithium Ion Battery (2025 Updated)

Inverters also help to protect the battery from overcharging, as well as providing the necessary power for the battery to operate optimally. When ...



What Size Lithium Battery Do You Need? , Complete ...

Find the right lithium battery size for your caravan, 4WD, boat, or off-grid solar system. Learn how to calculate capacity and choose the best ...

3600W Solar Inverter 24Vdc to 110Vac, Pure Sine Wave Inverter with 120A

This leads to faster charging of your batteries and better overall system performance ?Wide Battery Compatibility ?The inverter is designed to work with a variety of ...





Compatibility of Lithium-Ion Batteries with Existing ...

Learn how to seamlessly integrate lithium-ion batteries with existing inverters for efficient and reliable power solutions. Maximize energy storage with Invertek ...

[Calculate Battery Size for Inverter Calculator](#)

Estimate the battery capacity required for your inverter based on power load, runtime, and efficiency. Using the Calculate Battery Size for Inverter Calculator can ...



Why Is It Important to Match Inverter Size to a 200Ah Lithium Battery

Matching the inverter size to a 200Ah lithium battery is crucial for optimal performance and efficiency. An appropriately sized inverter ensures that the battery can ...

Choosing the Right Inverter Size for a 200Ah Lithium Battery

When selecting an inverter for a 200Ah lithium battery, it is important to understand your energy needs and consider factors such as power consumption, inverter types, and installation ...



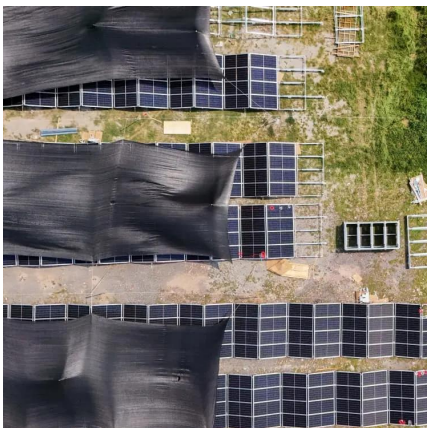
Can an Inverter Be Too Big for Your Battery System?

Match the inverter's continuous wattage rating to the battery's discharge capacity. For a 12V 200Ah battery (2.4kWh), a 2000W inverter is ideal. Formula: Inverter Wattage \leq (Battery ...



What size inverter do you need for a 100ah battery?

What size inverter for a 100Ah battery? For appliances that use a relatively low amount of power, such as laptops, lights, TVs, and small fridges, ...



[Solar Battery Size Guide: kWh, Inverter & Runtime](#)

2 days ago· Size your solar battery using load profile, critical loads, efficiency and DoD. Calculator matches kWh, inverter and runtime for code-compliant installs.



Inverter Battery Size Calculator

Calculate the ideal battery size for your inverter system. Input load, backup time, voltage, and battery type to find the required capacity.



[Lithium Batteries: What Size Inverter Can I Use?](#)

Bottom line, if you want to run large inverter loads above 1000w on a lithium battery, make sure you choose an lithium battery that is designed for larger ...

How to Calculate the Right Inverter Battery Capacity ...

Learn how to calculate the right inverter battery capacity for your needs with a simple formula. Understand power requirements, efficiency ...



How to Choose the Right Inverter for Lithium Batteries?

Answer: To choose the right inverter for lithium batteries, match the inverter's voltage and capacity to your battery's specifications, prioritize pure sine wave inverters for ...



Contact Us

For catalog requests, pricing, or partnerships, please visit:
<https://www.talbert.co.za>