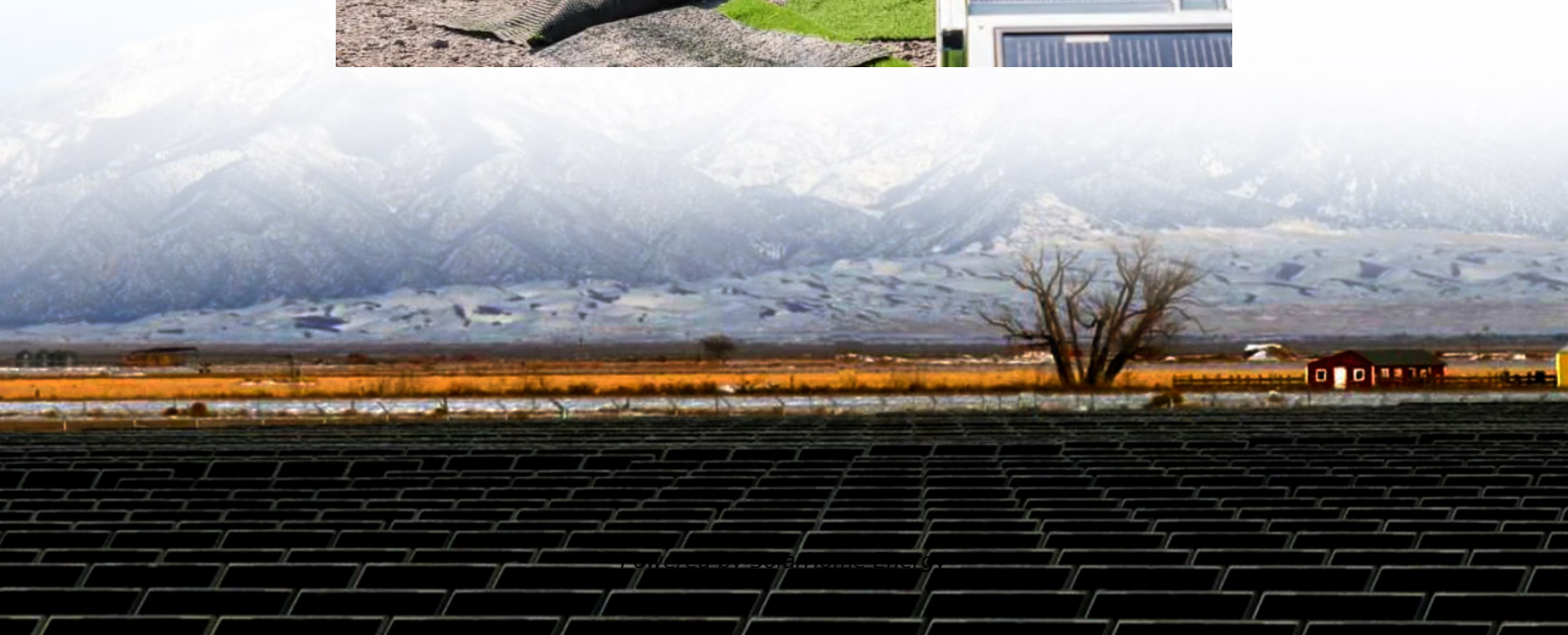


# **What size battery should I use with a 2200w inverter**





## Overview

---

To recharge your battery from time to time you would need the right size solar panel to do the job! Read the below article to find out the suitable solar panel size for your battery bank .

Note!The battery size will be based on running your inverter at its full capacity  
Assumptions 1. Modified sine wave inverter efficiency: 85% 2. Pure sine wave inverter efficiency:90% 3. Lithium Battery:100% Depth of discharge limit 4. lead-acid.

To calculate the battery capacity for your inverter use this formula  $\text{Inverter capacity (W)} \times \text{Runtime (hrs)} / \text{solar system voltage} = \text{Battery Size} \times 1.15$  Multiply the result by 2 for lead-acid type.

You would need around 24v150Ah Lithium or 24v 300Ah Lead-acid Batteryto run a 3000-watt inverter for 1 hour at its full capacity .

Here's a battery size chart for any size inverter with 1 hour of load runtime  
Note! The input voltage of the inverter should match the battery voltage. (For example 12v battery for 12v.

A general rule is that for every 1000 watts of inverter capacity, you should have at least 100Ah of battery capacity.For instance, if you have a 2000W inverter, you should ideally have at least 200Ah of battery capacity, considering efficiency losses and depth of discharge.What is the recommended battery size for an inverter?

Interpreting Results: Once you input the required data, the calculator will generate the recommended battery size in ampere-hours (Ah). For instance, if your power consumption is 500 watts, the usage time is 4 hours, and the inverter efficiency is 90%, the calculator might suggest a battery size of approximately 222 Ah.

What is the calculate battery size for inverter calculator?

The Calculate Battery Size for Inverter Calculator helps you determine the optimal battery capacity needed to support your inverter system. By inputting critical parameters such as power consumption, inverter efficiency, and



desired usage time, this calculator provides a precise battery size recommendation tailored to your specific needs.

How much battery do I need to run a 3000-watt inverter?

You would need around 24v 150Ah Lithium or 24v 300Ah Lead-acid Battery to run a 3000-watt inverter for 1 hour at its full capacity Here's a battery size chart for any size inverter with 1 hour of load runtime Note! The input voltage of the inverter should match the battery voltage.

How much battery should a 500 watt inverter use?

For instance, if your power consumption is 500 watts, the usage time is 4 hours, and the inverter efficiency is 90%, the calculator might suggest a battery size of approximately 222 Ah. Practical Tips: Ensure all input values are accurate to avoid skewed results.

How much power does a 2000 watt inverter take?

If you max out the inverter at 2000 watts, you are pulling  $2000 \text{ watts} / 12 \text{ volts} = 166.6 \text{ DC amps per hour}$ . If you use a 200-amp 12-volt battery, you would divide the 200-amp battery / 166.6 amps = 1.2 hours of run time. This is if you plan on fully depleting the battery, which we DON'T recommend. We recommend 50% depth of discharge.

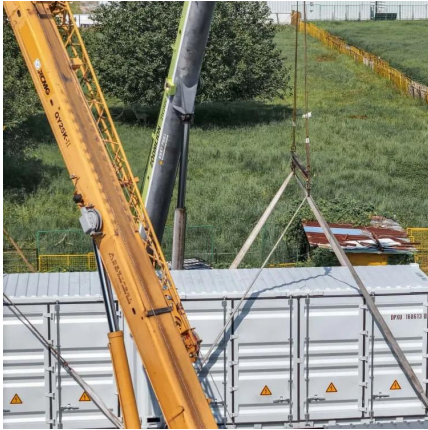
What voltage should a 12V inverter run on?

The input voltage of the inverter should match the battery voltage. (For example 12v battery for 12v inverter, 24v battery for 24v inverter and 48v battery for 48v inverter Summary What Will An Inverter Run & For How Long?



## What size battery should I use with a 2200w inverter

---

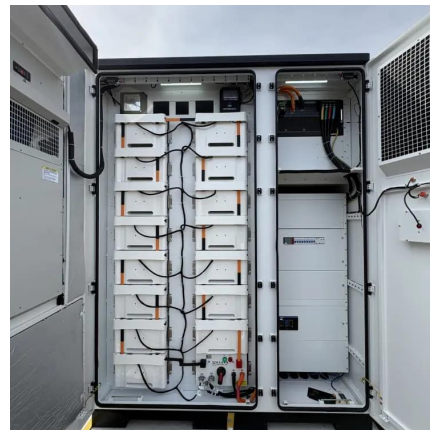


### How to Choose to right Size Off-Grid Power Inverter

Q: Firstly, what is an inverter? A: A device which changes direct current (DC) into alternating current (AC) Power. Example: It may turn (convert) 12v, or 24v or 48v DC into 230V AC power ...

### What Size Wire For Any Inverter: Inverter Wire Size Chart

Choosing the right cables for your inverter can be downright confusing. This guide helps you find the right size wire for any sized inverter.



### How to Determine What Size Inverter You Can Run Off a 100Ah Battery

Determining the appropriate size of an inverter that can be run off a 100Ah battery involves understanding both the power output of the inverter and the energy capacity of the battery. A ...

### Calculator

To determine the right capacity of battery that fulfils your desired backup requirement at the time of power outages lets do calculations. Here





is the formula: Battery Capacity (Ah Ratings) = ...

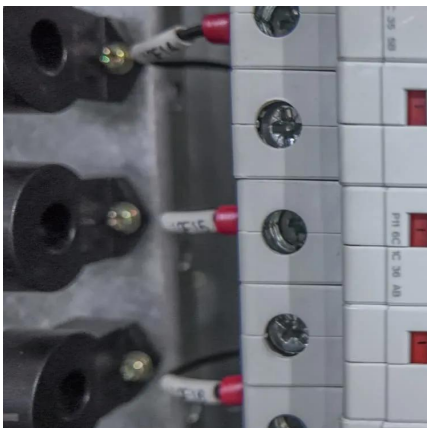


## How to Calculate Battery Size for Inverters of Any Size

To find the best battery now that you've learned using our inverter battery bank calculator, shop our selection of batteries for your power inverter. If you'd like to learn how to hook up your ...

## How to size an inverter that can run your air conditioner?

For example, if your battery bank consists of 4 - 12V batteries with a 2S2P configuration, the inverter must have an Input Voltage of 24 Volts. If all ...



## What Size Inverter Do I Need for a 12V 100Ah Battery?

When determining what size inverter you need for a 12V 100Ah battery, it's essential to consider both your power requirements and the efficiency of your inverter system. ...



## How to Calculate the Right Inverter Battery Capacity ...

Learn how to calculate the right inverter battery capacity for your needs with a simple formula. Understand power requirements, efficiency ...



## [400W Solar Panel Kit \(DIY\): What Size Battery, ...](#)

In this guide, you'll learn, how many batteries, What size charge controller, what size inverter & what size cable you'll need for a 400-watt solar ...

## Understanding Battery Capacity and Inverter Compatibility

In this guide, we will delve into the practical aspects of converting amp-hours to watt-hours, calculating battery run times, and determining the right inverter size, among other ...



## Battery To Inverter Wire Size Calculator: What Size

The Continuous Power rating of the inverter (in Watts). The voltage of the battery bank (in Volts). The distance between the battery bank ...



## Inverter Size Calculator & Formula Online Calculator Ultra

Choosing the right inverter size is vital for anyone using a solar power system, backup power supply, or off-grid setup. A properly sized inverter can handle the power ...

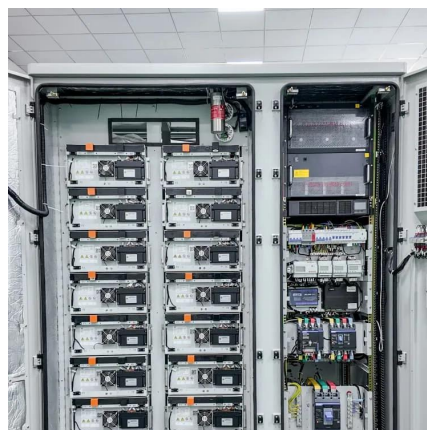


## How to Calculate the Right Battery Size for Your ...

By calculation, you can understand which size battery is required for your inverter which fulfills your power needs. By evaluation, you can ensure a reliable and ...

## How to Determine Battery Sizes when using Pure Sine Wave ...

We often get calls asking, "What size battery do I need to power my Pure Sine Wave Inverter?" And, I admit that is a fair question to the beginner, so we're here to educate ...



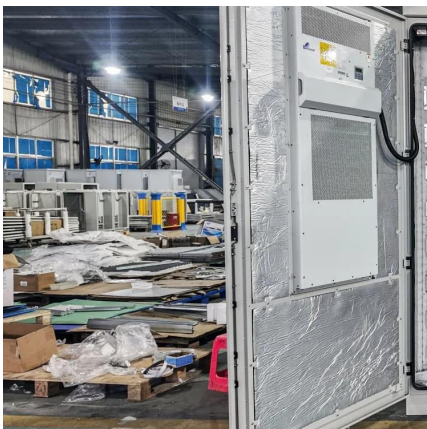


## How to Calculate the Right Inverter Battery Capacity for Your Needs

Learn how to calculate the right inverter battery capacity for your needs with a simple formula. Understand power requirements, efficiency losses, and the best battery types ...

### Continuous power vs surge power for the fuse and the wire sizing?

Hi, can someone please explain what determines the size of the cable and the size of the fuse from the battery to the inverter. I have a 24v battery bank and I'm planning to ...



## Inverter Battery Size Calculator

Calculate the ideal battery size for your inverter system. Input load, backup time, voltage, and battery type to find the required capacity.

### [How Do I Match My Battery Size to My Inverter?](#)

A general rule is that for every 1000 watts of inverter capacity, you should have at least 100Ah of battery capacity. For instance, if you have a 2000W inverter, you should ideally have at least ...





## How Many Batteries To Power 2000w Inverter? , Inverter And Battery

This video answers the question "How many batteries for a 2000W inverter?" We'll cover everything you need to know to power your 2000W inverter effectively.

### [Calculate Battery Size for Inverter Calculator](#)

The Calculate Battery Size for Inverter Calculator helps you determine the optimal battery capacity needed to support your inverter system. By inputting critical parameters such ...



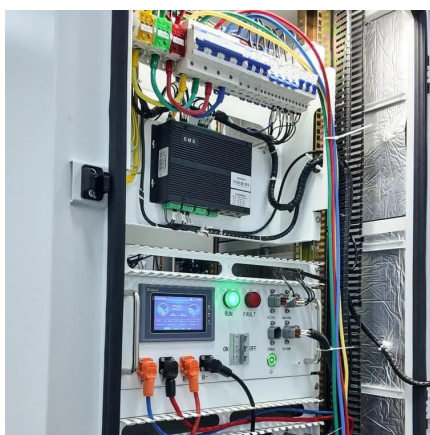
### [Calculate Battery Size for Inverter Calculator](#)

Estimate the battery capacity required for your inverter based on power load, runtime, and efficiency. Using the Calculate Battery Size for Inverter Calculator can ...



## What Size Inverter Do I Need?

To figure out how long a 100Ah battery will run a 1000W inverter, you need to consider the battery's voltage and the inverter's efficiency. ...



## Calculate Battery Size For Any Size Inverter (Using Our Calculator)

To recharge your battery from time to time you would need the right size solar panel to do the job! Read the below article to find out the suitable solar panel size for your battery bank

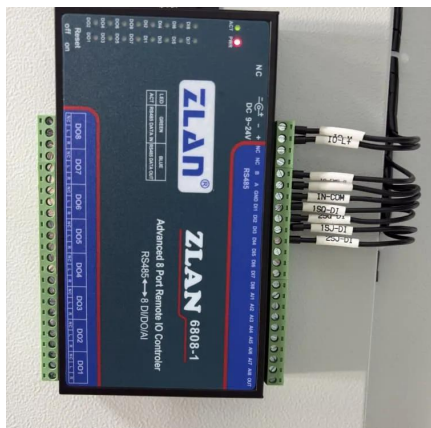
## Inverter cable and breaker sizing

Can anyone tell me what size wire I would use with a 250A breaker for this inverter? inverter specifications: Overload protection: 2,000 W - 2,100 W Reverse polarity protection: fuse Short ...



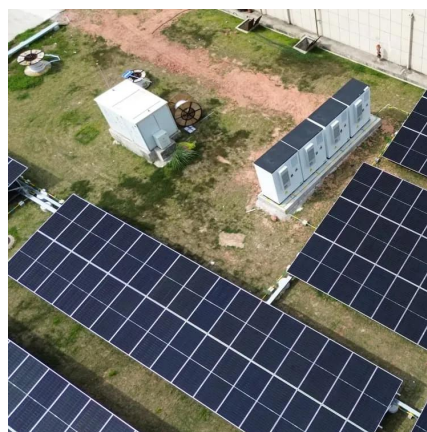
## How to Calculate the Right Battery Size for Your Inverter System

By calculation, you can understand which size battery is required for your inverter which fulfils your power needs. By evaluation, you can ensure a reliable and efficient power backup ...



## Help: Calculating battery sizes and inverter sizes?

Re: Help: Calculating battery sizes and inverter sizes? It's easy to get lost in the calculations. Especially if you try to switch between one system Voltage and another. So, start with the ...



## Contact Us

For catalog requests, pricing, or partnerships, please visit:  
<https://www.talbert.co.za>