

# What size are the photovoltaic panels for 3 square meters





## Overview

---

The solar panel size chart can be a valuable tool in estimating the amount of standard-sized solar panels required for an average residential dwelling. At the present time that figure is between 17-21 due to the wattage of the solar panels. Industry experts are striving to design more powerful solar panels.

In order to avoid a loss of function from an insufficient power supply, understanding the use for each size can also be a huge help. The size of your roof or the land.

Monocrystalline, Polycrystalline, and Thin-film are the three main types of solar panels used on the market today. They are all produced to exacting standards.

If you are fortunate enough to have unlimited space on your rooftop or acres upon acres of unused land available to install solar panels, then the wattage.

**Residential Solar Panels:** Residential solar panels typically measure around 1.6 meters by 1 meter. These dimensions are standard for most home installations and are designed to fit neatly on suburban rooftops. What are the different sizes of solar panels?

There are 3 standardized sizes of solar panels, namely: 60-cell solar panels size. The dimensions of 60-cell solar panels are as follows: 66 inches long, and 39 inches wide. That's basically a 66×39 solar panel. But what is the wattage?

That is unfortunately not listed at all. 72-cell solar panel size.

How many Watts Does a solar panel produce per square foot?

Dividing the specified wattage by the square footage of the solar panel will give us just this result: The average solar panel output per area is 17.25 watts per square foot. Let's say that you have 500 square feet of roof available for solar panel installation.

What is a solar panel size estimate calculator?

The Solar Panel Size Estimator Calculator is your go-to resource when planning



a solar installation. It is crucial when you're assessing the feasibility of solar energy for your home or business.

How many solar panels can you put on a roof?

There is no standardized chart that will tell you, for example, "A typical 300-watt solar panel is this long and this wide." If you want to calculate how many solar panels you can put on your roof, you will obviously need to know the size of a solar panel. Example: 5kW solar system is comprised of 50 100-watt solar panels.

How thick should solar panels be?

The only useful thing that we get from this is depth or height (panel thickness): Most solar panels are about 1.5 inches thick. Alright, let's have a look at the length and width of typical solar panels, with wattage (very important), and complete with area or square footage (useful when calculating how many solar panels you can fit on a roof):.

How deep is a solar panel?

The most common depth is 1.38 inches. Panel dimensions are influenced by wattage, cell technology, and panel design, which means sizes will always vary, even between panels with similar wattage or efficiency ratings. Understanding typical solar panel dimensions can help you plan your solar installation.



## What size are the photovoltaic panels for 3 square meters

---



### Solar Panel Calculator

A typical value might be around 15-20%.  
Calculate Total Solar Panel Power (W): Use the formula above to find out how much total power your solar panels need to produce. Calculate Total ...

### Total Area Required for Solar Panel Installation Calculator

Calculate the total area needed for your solar panel installation quickly and accurately with our easy-to-use solar panel area calculator.



### [We Analyzed 100 Solar Panels: Dimensions, ...](#)

Dimensions and Area: The dimensions of each solar panel model are listed in ...

### [Solar panel sizes & dimensions: explained \[UK, 2025\]](#)

What size are solar panels in the UK? There are two ways to talk about solar panel size: watts



(W) and physical dimensions, though the more ...

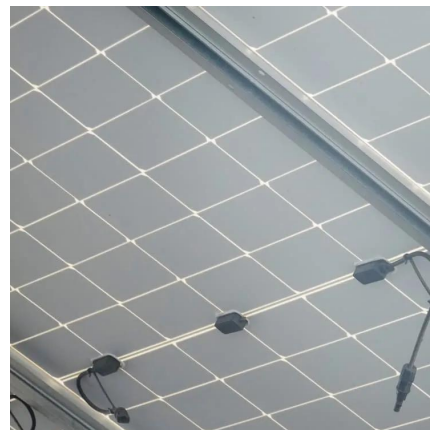


## Solar Panel Calculator

The solar panel calculator can be used to figure out how many solar panels you need and determine the right system size and roof area requirements.

## What are the Standard Sizes of Solar Photovoltaic ...

This article covers the standard sizes of solar photovoltaic panels and explains how to determine how many panels your solar system needs. It also helps ...



## [Standard Solar Panel Sizes And Wattages \(100W ...](#)

To bridge that gap of very useful knowledge needed, we have compared and averaged the sizes of 100-watt to 500-watt solar panels available on the ...





## [How to Size a Solar System \[Step-by-Step Guide\]](#)

Learn how to size a solar system for your home. Here's our step-by-step guide on sizing a solar system that meets your energy needs.



## [Solar Panel Size Estimator Calculator](#)

The Solar Panel Size Estimator Calculator is a tool designed to help you determine the appropriate size of solar panels needed for your ...

## [Solar Panel Dimensions Sizes and Wattage](#)

In terms of dimensions, a 300w monocrystalline or polycrystalline solar panel typically has a length of around 1.6 meters and a width of 1 meter. ...



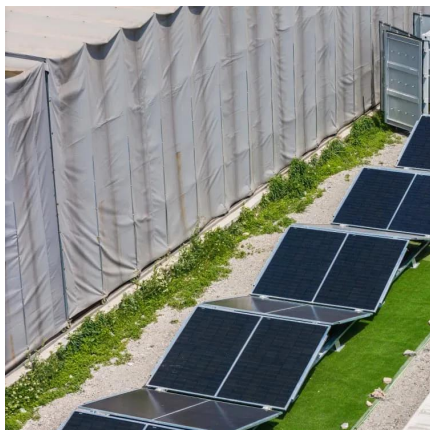
## **How many square meters is a solar photovoltaic panel?**

Solar photovoltaic panels vary in size, but a standard residential unit typically measures around 1.6 square meters. This measurement allows for flexible installation options ...



## [Solar Panel Size Guide for residence and industry](#)

Discover the right solar panel size that fits your home or industrial needs. Different solar panel sizes and dimensions. Learn more

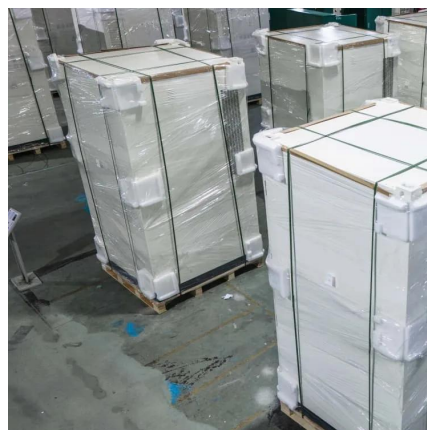


## **Solar Panel Size and Wattage Chart: Standard Sizes & Uses for ...**

Using a solar panel size chart can help you choose the best types of solar panels for your home or application. Because the size of a standard solar panel can vary, a chart that ...

## [How Many Square Meters Is One Solar Panel?](#)

This article will delve into the average size of a solar panel in square meters. We will explore the standard dimensions, the typical energy output associated with these sizes, ...





## **We Analyzed 100 Solar Panels: Dimensions, Efficiency, & Load**

Dimensions and Area: The dimensions of each solar panel model are listed in millimeters, along with the calculated area in square meters. Looking at the "Dimensions (mm)," "Area (m<sup>2</sup>)," and ...

### [Solar Rooftop Calculator , Solar Panel Calculator](#)

Online Solar Roof Top Calculator Calculates the number of solar panels, kilowatt capacity, daily unit production, and require area in Square Meter as well as Square Feet based on the ...



## **How many square meters is a solar photovoltaic panel?**

Solar photovoltaic panels vary in size, but a standard residential unit typically measures around 1.6 square meters. This measurement allows for ...

### [Solar Panel Dimensions Sizes and Wattage](#)

In terms of dimensions, a 300w monocrystalline or polycrystalline solar panel typically has a length of around 1.6 meters and a width of 1 meter. However, these dimensions ...





## 1kW Solar Panel Size

This is An Efficient Size Guide for 1kW Solar Panels: Learn Dimensions, Installation Tips, and Space Requirements for Optimal Setup Investing in a 1kW solar panel system is a ...



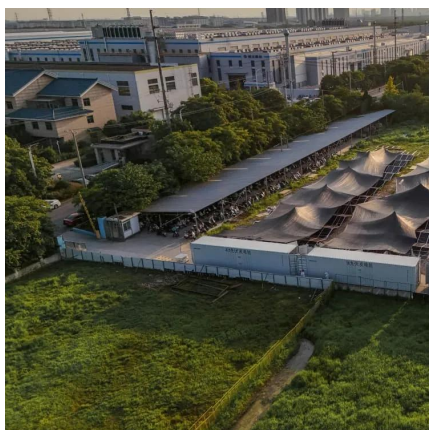
## The best solar panel size guide every homeowner needs

Learn how to choose the ideal solar panel size for your home with charts, standard dimensions, and tips to calculate size per kW in this complete ...



## [Solar Panel Dimensions and Output and Weight](#)

When contemplating the addition of solar panels to your roof, the dimensions and effectiveness of these panels are crucial aspects to keep in ...





## Solar Panel Size Chart: Making the Right Choice In 2024

Size matters when it comes to solar panels. Wattage indicates how much power a panel can produce per hour is the most critical ...



## The best solar panel size guide every homeowner needs

Learn how to choose the ideal solar panel size for your home with charts, standard dimensions, and tips to calculate size per kW in this complete guide.

## Solar Panel Sizes and Wattage: Everything You Need ...

Commercial Solar Panels Commercial solar panels are designed for businesses and come with 72 cells. They are 30% larger than residential ...



## Standard Solar Panel Sizes And Wattages (100W-500W ...

To bridge that gap of very useful knowledge needed, we have compared and averaged the sizes of 100-watt to 500-watt solar panels available on the market. The goal here is to get to the ...



## Total Area Required for Solar Panel Installation ...

Calculate the total area needed for your solar panel installation quickly and accurately with our easy-to-use solar panel area calculator.



## Contact Us

---

For catalog requests, pricing, or partnerships, please visit:  
<https://www.talbert.co.za>