

What kind of battery should be used with an inverter





Overview

Choosing the right battery for an inverter is crucial for ensuring efficient power supply and longevity. The best batteries for inverters typically include deep cycle lead-acid batteries, lithium-ion batteries, and AGM (Absorbent Glass Mat) batteries. What type of battery do inverters use?

The most common battery types used with inverters are lead-acid and lithium-ion batteries. Lead-acid batteries are affordable but have a shorter lifespan compared to lithium-ion batteries, which are more expensive but offer longer cycle life and higher energy density.

Do inverters need batteries?

For most residential and small commercial setups, the traditional battery and power inverter combo is the preferred choice to ensure continuous power supply during blackouts. So, while some inverter types do not require batteries, if your priority is uninterrupted backup power, investing in a quality battery in inverter system is essential.

Are all batteries compatible with all inverters?

However, not all batteries are compatible with all inverters. To ensure a seamless and efficient operation, it's important to choose a battery that is well-suited for your specific power inverter. Before selecting a battery, it's essential to have a good understanding of your power inverter.

Are Inverter Batteries reliable?

In regions prone to frequent power cuts or unreliable electricity supply, inverter batteries are a dependable backup solution, ensuring consistent productivity and comfort. Part 2. Types of inverter batteries Lead-acid batteries are the most commonly used inverter batteries.

What is the best backup battery for an inverter?

The best backup battery for an inverter is one that provides sufficient capacity



to meet your power needs during an outage. Deep cycle batteries are a popular choice for backup power as they can provide a steady amount of power for an extended period. AGM batteries are another option that can handle high power loads and require minimal maintenance.

Which battery is best for a deep cycle inverter?

There are several popular deep cycle battery options available for inverter usage: Lead Acid Batteries: These batteries are affordable and widely used, making them a popular choice. However, they require regular maintenance and cannot be fully discharged without potentially damaging the battery.



What kind of battery should be used with an inverter



Compatibility of LiFePO4 Batteries and Chargers/Inverters

Ensuring compatibility between LiFePO4 batteries and chargers or inverters is crucial for optimal performance and safety. Key factors include understanding charging ...

What Will An Inverter Run & For How Long? (With Calculator)

I saw on many forums that most people are confused about what they can run on their 1000,1500,2000,3000, & 5000-watt inverter and how long will their inverter last with a ...



[Best Battery Options to Use with an Inverter](#)

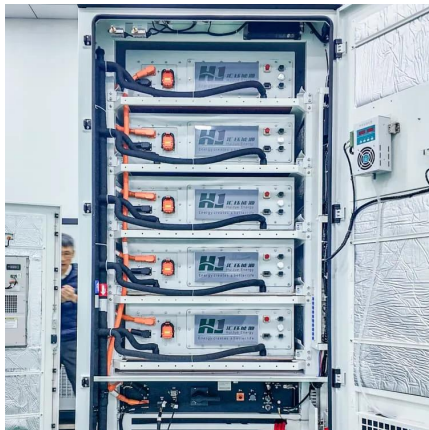
Lead-acid batteries are the most common and widely used type of battery for inverters. They are affordable, readily available, and offer reliable performance. However, they ...

The Ultimate Guide to Choose Batteries for Inverter

What type and size of battery is best for inverter? Lead acid, gel and lithium battery,



what's the difference? Keep reading and choose the best battery for your inverter.

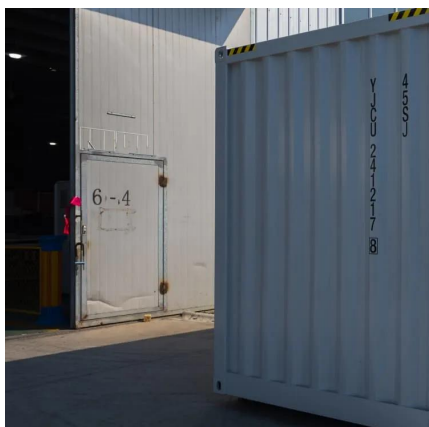


Battery Choices for Home Power Inverters: What Professionals ...

Explore the different types of batteries (lead-acid, lithium-ion, etc.) used with home power inverters. Discuss the pros and cons of each type, their compatibility with various ...

Should I get an extra battery for the inverter?

I use it to power a 700 watt microwave or 750 watt teapot. Cheap mode: Other than the inverter on the car battery, you can go to the auto parts store or boat ...



Ultimate Guide to Battery in Inverter: Choose & Maintain Right

Discover how to choose, maintain, and maximize your battery in inverter for reliable backup power. Expert tips on inverter batteries, lifespan, and safety included!



What Type of Battery Should I Use for My Inverter?

What type of battery works best for inverters? Deep-cycle batteries work best for your sine wave inverters. Here's why: They can get discharged and recharged multiple times ...



[Battery Choices for Home Power Inverters: What ...](#)

Explore the different types of batteries (lead-acid, lithium-ion, etc.) used with home power inverters. Discuss the pros and cons of each type, their ...

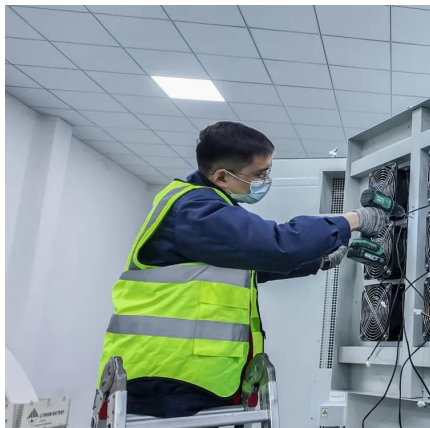
Mastering Inverter Batteries: Types, Selection, and Care

Inverter batteries are essential for keeping things running when the power goes out. They store energy during electricity failures, helping homes ...



Everything You Need to Know About Inverters: Types, ...

Unlock the potential of power supply with our comprehensive guide on all about inverters - discover types, benefits, and tips for the perfect ...



Best Inverter Battery for Home Use in India: An ...

In India, where power outages are common, having a dependable inverter system with a good battery for your house or office is essential. During ...



What kind of battery should I use with a power inverter?

What kind of battery should I use with a power inverter? The inverter draws its power from a 12 Volt battery (preferably deep-cycle), or several batteries wired in parallel. The battery will need ...

What is the Best Battery to use with an Inverter? - leaptrend

Here are some key factors that can help you choose the best battery for your inverter. The capacity of a battery is an important indicator of its energy storage capability. The ...





Choosing The Right Inverter Cables: A Guide To Safe And ...

Understanding Inverter Cables Inverter cable transfers current from a power source, such as a battery or Photovoltaic (PV) panel, to the inverter, which converts DC into AC and can then be ...

Choosing the Best Inverter Battery

An inverter battery is a rechargeable battery that stores energy when power is available, which can be used when there is a power outage. It's a crucial ...



Mastering Inverter Batteries: Types, Selection, and Care

Inverter batteries are essential for keeping things running when the power goes out. They store energy during electricity failures, helping homes and appliances stay ...

5 Best Battery For Inverter Use: 12 V Rechargeable ...

Easy navigation: Best battery for inverter use
Comparison List consider when buying the best
battery Frequently Asked Questions Wrap it up!
Best battery ...



How to Calculate the Right Battery Size for Your ...

Calculating the correct battery size ensures that your inverter system can meet your power needs without leaving you in the dark during outages. An ...



What is the Best Battery to use with an Inverter? - ...

Here are some key factors that can help you choose the best battery for your inverter. The capacity of a battery is an important indicator of ...



Which Battery is Best for Solar Inverter: A Comprehensive ...

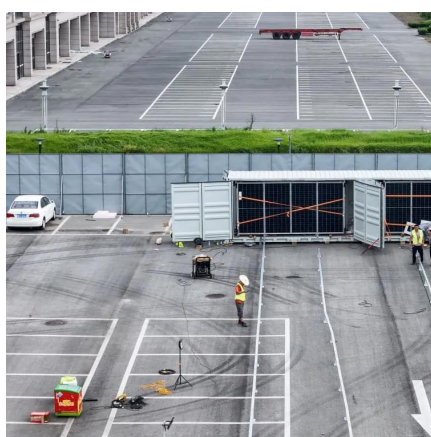
Battery Types: The main battery options for solar inverters are lead-acid (including flooded and AGM) and lithium-ion. Lead-acid is more affordable but has a shorter lifespan, ...





What Type of Battery Should I Use for My Inverter?

What type of battery works best for inverters? Deep-cycle batteries work best for your sine wave inverters. Here's why: They can get discharged ...

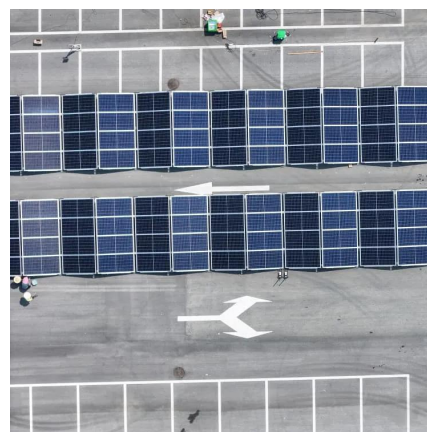


[Do I Need A Fuse Between Battery And Inverter](#)

So, the answer to do I need a fuse between battery and inverter is yes, you sure do. First of all, the inverter will work only in inverter mode ...

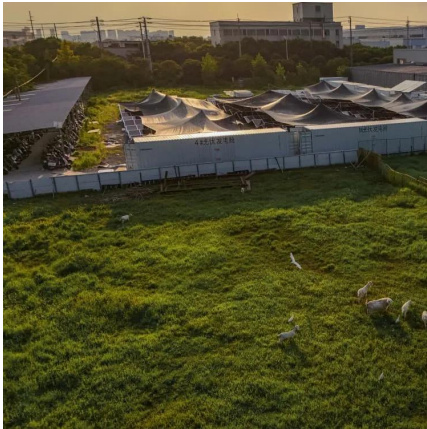
[1500 Watt Inverter: Battery Sizing Guide](#)

How many batteries do I need for a 1500-watt inverter? In short, For 1500 watt inverter you'll need two 12V 100Ah lead-acid batteries connected in series or a single 24V ...



MWXNE , How to Select the Right Power Inverter for ...

Choosing the right inverter power for home use isn't just about wattage--it's about understanding your energy needs, choosing the right type, ...



[Comprehensive Guide to Inverter Battery](#)

What are the different types of inverter batteries? There are several types of inverter batteries, each with unique characteristics suited for different applications. This table ...



The Ultimate Guide to Choose Batteries for Inverter

Choosing the right battery for an inverter is crucial for ensuring efficient power supply and longevity. The best batteries for inverters typically include deep cycle lead-acid ...

What Battery Is Best for Inverters? A Comprehensive Guide

Choosing the right battery for an inverter is crucial for ensuring efficient power supply and longevity. The best batteries for inverters typically include deep cycle lead-acid ...





Power When Away From Home , Using a Power Inverter

Creating battery banks is a good alternative to buying a larger battery. Remember, when configuring batteries in parallel, it should be done with 12 volt batteries of the same type as ...

Contact Us

For catalog requests, pricing, or partnerships, please visit:
<https://www.talbert.co.za>