

What kind of battery should I use with an outdoor inverter





Overview

What type of battery works best for inverters?

Deep-cycle batteries work best for your sine wave inverters. Here's why: They can get discharged and recharged multiple times and produce steady power over an extended period. Deep-cycle batteries have low internal resistance. What type of battery does a car inverter use?

Voltage In – Most commonly, 12V batteries are used to power inverters. This is the type of battery in your car. Heavy-duty inverter/chargers are also available that use 24V, 36V or 48V batteries for applications requiring higher wattages. Ensure the batteries you choose match the inverter's input voltage.

Which battery is best for a sine wave inverter?

Deep-cycle batteries work best for your sine wave inverters. Here's why: They can get discharged and recharged multiple times and produce steady power over an extended period. Deep-cycle batteries have low internal resistance. So, they don't get hot when you charge them up with solar power, unlike other lead-acid batteries.

How many batteries should a 12 volt inverter use?

It may be advisable to operate the inverter from a bank of 12 Volt batteries of the same type in a "parallel" configuration. Two such batteries will generate twice the amp/hours of a single battery; three batteries will generate three times the amp/hours, and so on.

How do I choose a battery for my inverter?

When selecting batteries, it's important to ensure that the chosen battery's rated voltage is compatible with the inverter and matches the system voltage. Additionally, the depth of discharge is a critical consideration.

How much battery do you need to power a 1000W inverter?



To power a 1000W inverter, you typically need a battery with a minimum capacity of 100Ah if you plan to run it for about one hour. However, the actual size may vary based on the duration of use and the efficiency of the inverter. It's essential to consider both the voltage and amp-hour rating for optimal performance. 1.

What kind of batteries do I need for a 500 watt inverter?

500 Watt and larger Inverters: We recommend you use deep cycle (marine or RV) batteries which will give you several hundred complete charge/discharge cycles. If you use the normal vehicle starting batteries they will wear out after about a dozen charge/discharge cycles.



What kind of battery should I use with an outdoor inverter



What Type of Battery Should I Use for My Inverter?

What type of battery works best for inverters? Deep-cycle batteries work best for your sine wave inverters. Here's why: They can get discharged and recharged multiple times ...

Sizing the Right Inverter for 100ah Battery

Step to calculate inverter size for 100ah battery: Calculate the total load you intend to use and add 20% for a safety margin. Select the inverter ...



The Ultimate Guide to Choose Batteries for Inverter

Lithium-ion batteries offer versatility and durability, making them a standout choice. They excel in both off-grid and grid-tie setups due to their high energy density and ...

How big a battery should I use for a 12v4500w inverter

To calculate the battery capacity for your inverter use this formula Inverter capacity



$(W) \times \text{Runtime (hrs)} / \text{solar system voltage} = \text{Battery Size} \times 1.15$ Multiply the result by 2 for lead-acid type. . You ...

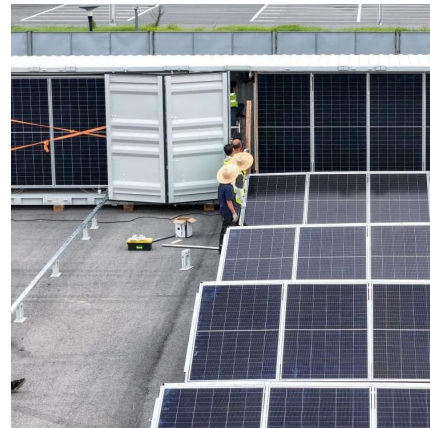


Frequently Asked Questions About Power Inverters , DonRowe

In these cases, it's a good idea to have an extra deep cycle battery for the inverter (installed close to the inverter), cabled to the starting battery. It is recommended to install a battery isolator ...

[What kind of battery should I use? : r/arduino](#)

Are there some other kind of batteries that I should use or should I just use the AA batteries. I want the batteries to able to power the arduino and also drive the motors on their own.



[Off-Grid Inverter Setup: A Comprehensive Guide](#)

The type of battery you choose for your off-grid inverter system will depend on your specific needs, budget, and preferences. Lead-acid batteries are a ...



Sump Pump Battery Buyer's Guide

Now, we'll decode the battery nomenclature that will help you differentiate one battery from the next, so you can find the perfect type of battery for your sump pump.



Best Battery for Inverter: Which One Should You Choose?

Discover the best battery for your inverter and find out which one is the most suitable, top choice, and optimal for powering your device.

Sump Pump Battery Buyer's Guide

Battery Buying Guide: Pick The Perfect Battery For Your Backup Sump Pump. Looking for a battery for your backup sump pump system? This guide will show how to choose the best ...



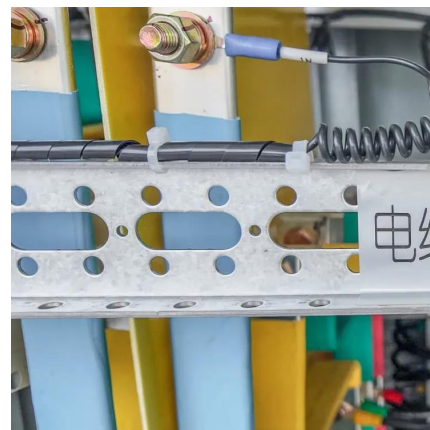
[Batteries For Inverters \(Complete Guide\)](#)

Best Batteries For Inverters Although there is a range of home energy storage batteries available on the market, you need to find the right type and size that ...



Should I get an extra battery for the inverter?

Typically a deep cycle battery or a marine battery of some kind. Makes sense But I've also seen setups where they do right from the OG Prius 12V battery. Which, as long as the ...

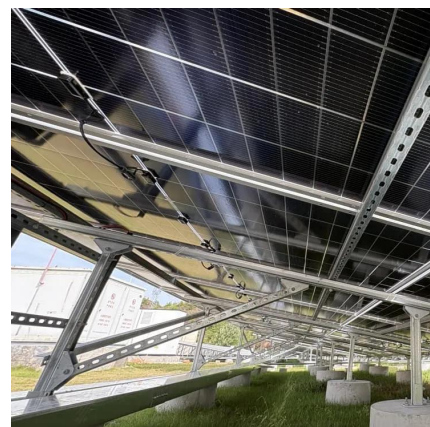


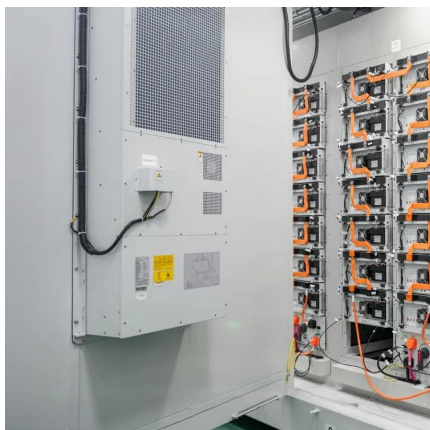
Top 10 Power Inverter Brands - Which One Should ...

Why It's Popular: Ideal for outdoor events and camping. Best For: Recreational use and outdoor activities. Tips for Choosing the Right Inverter ...

What to Know About Inverter Batteries

FAQ 1.How long does an inverter battery last?
The lifespan of an inverter battery depends on the type and quality of the battery, its usage, and maintenance. Typically, lead-acid batteries last ...





[Camper Batteries Explained for Beginners \(With ...](#)

Some people only use batteries when they're traveling and others rely on them all of the time. How long does a camper battery last? A 12-volt 10 ...

[What Size Battery Do I Need for a 1000W Inverter?](#)

To power a 1000W inverter, you typically need a battery with a minimum capacity of 100Ah if you plan to run it for about one hour. However, the actual size may vary based on ...



[400W Solar Panel Kit \(DIY\): What Size Battery, ...](#)

In this guide, you'll learn, how many batteries, What size charge controller, what size inverter & what size cable you'll need for a 400-watt solar ...

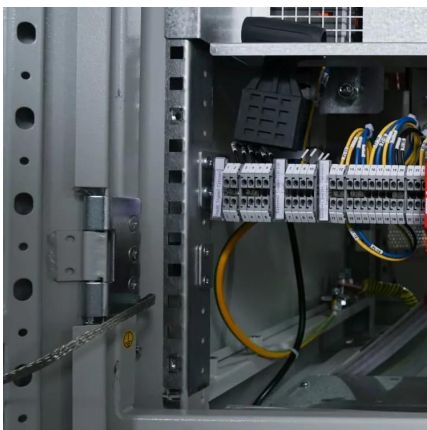
Batteries for a 3000 Watt Inverter: A Complete Guide

Drawing 3000 watts from a 300Ah battery will run for a maximum of 1.2 hours. If you reduce your power draw to 2000 watts, you would increase your runtime ...



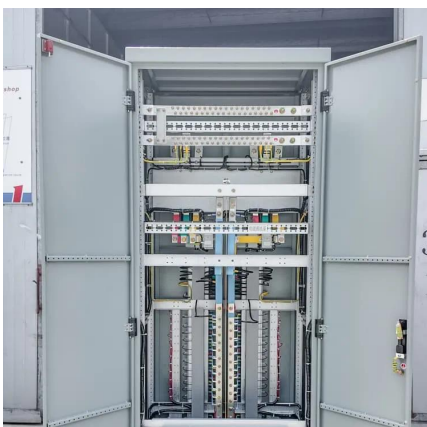
Best Battery For Inverter Use [Updated On: August 2025]

What Are Top Battery Recommendations for Inverter Use by 2023? The top battery recommendations for inverter use by 2023 include lithium-ion and lead-acid batteries.



Frequently Asked Questions About Power Inverters , DonRowe

What type of battery should I use (automotive or deep cycle)? How long can I run the power inverter on my battery? How do I connect two or more batteries together? Using a Microwave ...



[Power Inverter Buying Guide , Eaton](#)

When installing an inverter in an RV, connect it to the battery used to power the RV's interior, not the battery that powers the engine. Use the proper gauge wire.



Batteries for a 3000 Watt Inverter: A Complete Guide

Drawing 3000 watts from a 300Ah battery will run for a maximum of 1.2 hours. If you reduce your power draw to 2000 watts, you would increase your runtime to nearly 2 hours! Remember, a ...



What size inverter do you need for a 100ah battery?

What size inverter for a 100Ah battery? For appliances that use a relatively low amount of power, such as laptops, lights, TVs, and small fridges, a 500W inverter will likely do ...

Should I get an extra battery for the inverter?

Typically a deep cycle battery or a marine battery of some kind. Makes sense But I've also seen setups where they do right from the OG Prius 12V battery. ...



The Best Solar Batteries of 2025: Find Your Perfect ...

We rank the 8 best solar batteries of 2025 and explore some things to consider when adding battery storage to a solar system.



How to Power Outdoor Christmas Lights: Simple Tips ...

You're ready to decorate the outside of your home and realize you only have one outdoor outlet. How do you power your outdoor Christmas ...



The Ultimate Guide to Choose Batteries for Inverter

What Are Top Battery Recommendations for Inverter Use by 2023? The top battery recommendations for inverter use by 2023 include lithium-ion and lead-acid batteries.

Contact Us

For catalog requests, pricing, or partnerships, please visit:
<https://www.talbert.co.za>