

What is the minimum wattage of the inverter





Overview

Before we go any further, we highly recommend that you choose a pure sine wave inverter. This type of inverter delivers high-quality electricity, similar to your utility company. This way, none of your appliance.

How much wattage does an inverter need?

Check the nameplate on the appliance to determine the actual wattage required. * Appliances and tools with induction motors (marked * in tables) may require from 3 to 7 times the listed wattage when starting. The start-up load of the appliance or tool determines whether an inverter has the capability to power it.

What size inverter do I Need?

The right size inverter for your specific application depends on how much wattage your devices require. This information is usually printed somewhere on electronic devices, although it may show voltage and amperage ratings instead.

How to size a solar inverter?

The right way to size an inverter is to check the wattage. The inverter wattage must be the same or greater than your solar panel's watts. Here is a chart that shows the watts consumption of various appliances and what inverter size you will need. Note that this guide includes a 20% safety margin for the inverter watts.

How do I select an inverter that has enough power?

To select an inverter from DonRowe.com that has enough power for your application, add the watts for items you may want to run at the same time. Use the total wattage, plus 20%, as your minimum power requirement. Note: The wattage's given below are estimates. The actual wattage required for your appliances may differ from those listed.

How to calculate inverter size?



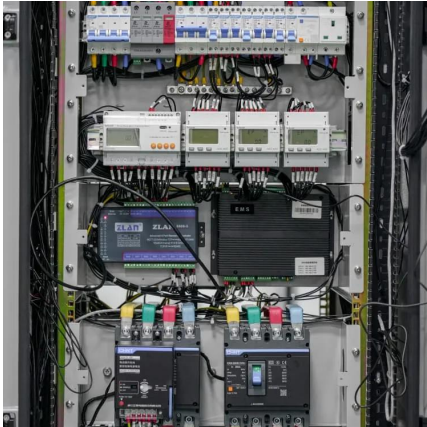
Using the Inverter Size Calculator is quick and easy. You'll need three inputs:
Total Wattage (W): This is the total power consumption of all the appliances or devices you plan to run through the inverter. Safety Factor: A multiplier to ensure some buffer above your actual power requirement. Typically ranges from 1.1 to 1.5.

Do you need a power inverter?

Whether you need to power electric lights, kitchen appliances, microwaves, power tools, TVs, radios, or computers, a power inverter can be a useful tool. To use a power inverter, it needs to be connected to a 12 Volt battery, preferably a deep-cycle battery.



What is the minimum wattage of the inverter



Inverter Size Calculator & Formula Online Calculator Ultra

To calculate the appropriate inverter size, the total wattage of all appliances that will be powered simultaneously is needed. A safety factor (usually around 1.25) is added to ...

Inverter Size Calculator

The Inverter Size Calculator is a digital tool that allows you to determine the correct inverter size needed for a specific total wattage load, considering factors like safety margins and inverter ...



[How to Size Your Microinverter for Solar Panels](#)

Choose the right microinverter for solar efficiency, considering wattage, shading, climate, and future expansion for optimal performance.

[What Size Inverter Do I Need for My Power Needs](#)

By choosing an inverter with a capacity of 2400 watts, you will have a safety margin, eliminating



the risk of overloading the system. This ensures that your home is ...



MWXNE , How to Select the Right Power Inverter for ...

Choosing the right inverter for your home is crucial for uninterrupted power during outages. Learn how to calculate inverter power ...

What Size Power Inverter Is Needed for a House [Full Guide]

In general, a 3000W to 5000W inverter works well for most homes, but the exact size depends on factors like household appliances, total power consumption, and battery ...



How to Choose the Right Inverter Size for Home , Luminous India

Learn how to choose the right inverter for your home. Calculate inverter capacity, understand kVA requirements, and pick the best inverter for reliable backup.



Understanding inverter voltage

The start inverter voltage is the minimum input voltage required for the inverter to initiate the conversion process. In the case of a 12V inverter, ...

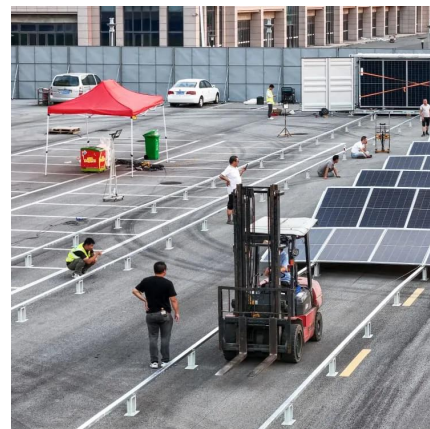


Understanding Battery Capacity and Inverter Compatibility

How Long Can a 100 Ah Battery Run a 1000W Inverter? To estimate how long a battery can run an inverter, we need to consider the power draw and the battery's capacity. ...

What Size Inverter Do I Need?

To get a total watt estimate for all of the items you plan on powering with your inverter, check this convenient estimator. This useful measurement tool can save you time and give you an ...



What Size Inverter Do I Need?

To get a total watt estimate for all of the items you plan on powering with your inverter, check this convenient estimator. This useful measurement tool can ...



Inverter Specifications and Data Sheet

Inverters can be classed according to their power output. The following information is not set in stone, but it gives you an idea of the classifications ...



Single Phase Inverter with HD-Wave Technology

Single Phase Inverter with HD-Wave Technology for North America SE3000H-US / SE3800H-US / SE5000H-US / SE6000H-US / SE7600H-US / SE10000H-US / SE11400H-US

What Inverter Size for Well Pump to Use?

It is comparable to running an air condition on solar, so make sure your inverter can handle its requirements before proceeding. To calculate what inverter your well pump needs: total surge ...



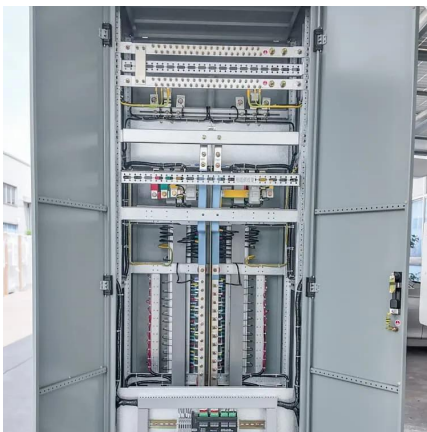
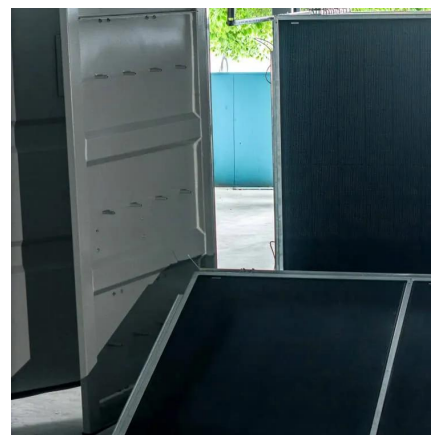


[Inverter Specifications and Data Sheet](#)

Inverters can be classed according to their power output. The following information is not set in stone, but it gives you an idea of the classifications and general power ranges associated with ...

What Size Power Inverter Is Needed for a House [Full ...

In general, a 3000W to 5000W inverter works well for most homes, but the exact size depends on factors like household appliances, total power ...



Inverter Size Calculator [Power Inverter, AC, DC, Solar Inverter]

Calculate the ideal inverter size with the Inverter Size Calculator. Perfect for selecting inverters for homes, solar panels, or vehicles based on power requirements.

Find the Right Inverter Size: How Big An Inverter Do You need?

How Much Power Is Enough for an Inverter? The right size inverter for your specific application depends on how much wattage your devices require. This information is ...



[Inverter Size Chat: What Size Inverter Do I Need?](#)

When you're browsing products you'll quickly see they have 200W, 300W, 1000W, 3000W, etc, listed. To find out your size, you just need to add together the total wattage of the appliances ...



Solar Inverter Size Chart

The inverter wattage must be the same or greater than your solar panel's watts. Here is a chart that shows the watts consumption of various appliances and what inverter size you will need.



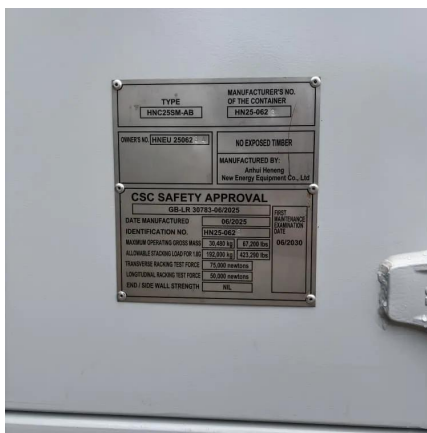
Inverter Calculator

To estimate the maximum battery current the inverter will require to run a piece of equipment or appliance, divide its continuous load wattage requirement by 10.



[Inverter Size Chat: What Size Inverter Do I Need?](#)

When you're browsing products you'll quickly see they have 200W, 300W, 1000W, 3000W, etc, listed. To find out your size, you just need to add together ...



Find the Right Inverter Size: How Big An Inverter Do ...

How Much Power Is Enough for an Inverter? The right size inverter for your specific application depends on how much wattage your devices ...

How to Calculate the Right Inverter Battery Capacity ...

Learn how to calculate the right inverter battery capacity for your needs with a simple formula. Understand power requirements, efficiency ...



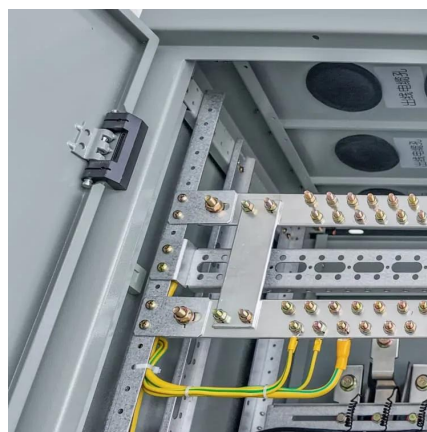
How Many Watt Inverter Do I Need? , Click to Learn More

This article is the perfect guide to let you know how many watt inverter do I need. we will guide you with proper calculations.



[Usage Chart: How Many Watts Do You Need?](#)

Use the total wattage, plus 20%, as your minimum power requirement. Note: The wattage's given below are estimates. The actual wattage required for your appliances may differ from those ...

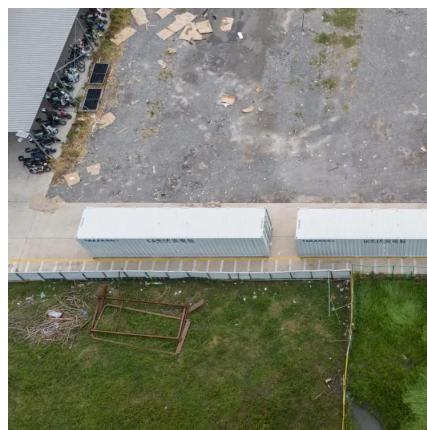


[The Only Inverter Size Chart You'll Ever Need](#)

During our research, we discovered that most inverters range in size from 300 watts up to over 3000 watts. In this article, we guide you through the different inverter sizes.

[Solar Inverter Sizing Calculator: Important Guide](#)

Solar Inverter Sizing calculator Use Below Solar Inverter Sizing calculator by just entering the two factors Load in kilo-watts and the safety ...





[What Size Battery Do I Need for a 1000W Inverter?](#)

Calculating Battery Size for a 1000W Inverter
When selecting a battery to support a 1000W inverter, several factors must be taken into account, including the inverter's wattage, ...

Contact Us

For catalog requests, pricing, or partnerships, please visit:
<https://www.talbert.co.za>