

What is the maximum wattage of a solar charging station





Overview

How do you calculate a solar charge controller wattage?

This max output current value is calculated by dividing the maximum system wattage (in Watts) by the minimum charging voltage of the battery bank (in Volts). In other words, we calculate how much current the solar charge controller needs to be able to put out by using this simple formula: MPPT amperage rating = (Max.

What is solar wattage?

Wattage, measured in watts (W), is the product of voltage and amperage ($W = V \times A$). It represents the total power output of a solar panel. Understanding wattage is essential for determining how much energy a solar panel can produce and, consequently, how much power your devices or appliances can draw from it.

How to choose a solar charge controller?

However, MPPT charge controllers also have a Maximum Input Voltage rating, which indicates the maximum amount of voltage (in Volts) that is acceptable at the input of the MPPT. So, when selecting your solar charge controller, you should account for both current and voltage.

How many amps can a solar charge controller put out?

The MPPT calculator tells us that our solar charge controller needs to have a maximum voltage input of more than 53V, and needs to be able to put out 22.5 amps. The calculator also gave us links to 2 choices for MPPT charge controllers that meet these criteria.

How much power can a solar panel produce?

Understanding wattage is essential for determining how much energy a solar panel can produce and, consequently, how much power your devices or appliances can draw from it. For example, a solar panel with a voltage of 20V



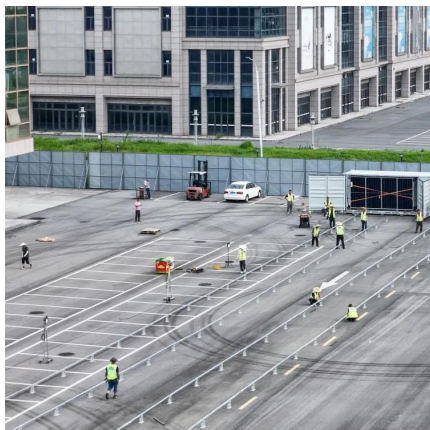
and an amperage of 5A has a wattage of 100W. This means the panel can produce 100 watts of power under optimal conditions.

Can a solar-powered charging station charge multiple devices?

A: Many modern solar-powered charging stations come equipped with various device support, such as USB-C or USB-A outputs, meaning you won't miss any connection needed when charging multiple devices at once. Q: Is a rooftop solar-powered charging station practical for home use?



What is the maximum wattage of a solar charging station



How Volts, Amps & Watts Affect Power Station Charging

Understand volts, amps, and watts to optimize charging your portable power station. Learn how input power impacts charging speed and efficiency.

ev charging stations how much wattage used , AMPPAL

When it comes to electric vehicles (EVs), one of the most common questions is about charging--specifically, how much wattage do EV charging stations use? Understanding the ...



Everything You Need to Know About Solar Charging ...

There exist two types of charge controllers: PWM (Pulse Width Modulation) and MPPT (Maximum Power Point Tracking). PWM controllers ...

What is the wattage limit for solar charging? , NenPower

To determine the wattage limit for solar charging, it is essential to consider various

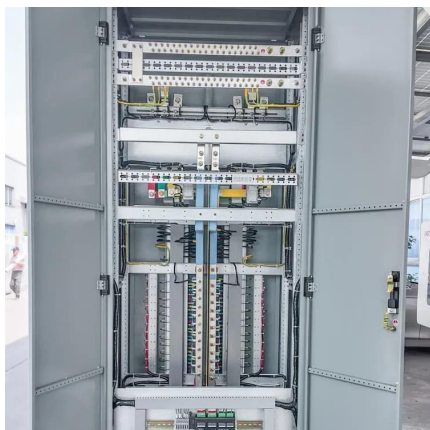


factors affecting solar panel efficiency, the energy needs of devices, and the compatibility of ...



What Size Solar Panel Do I Need to Charge a 12v Battery?

Discover the right solar panel size to efficiently charge your 12V battery. Learn how to calculate wattage, consider battery capacity, and optimize your solar charging setup for maximum ...



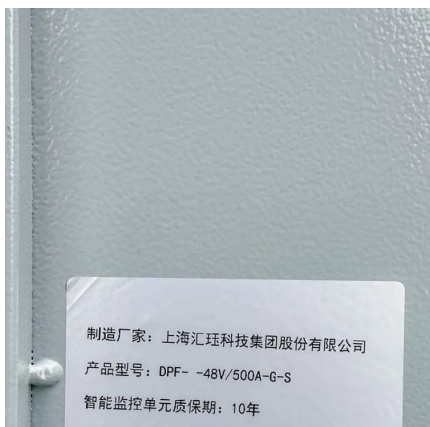
How Much Power Can a Portable Solar Panel Generate?

A portable solar panel is rated for the maximum power it can generate per hour. For example, a 100-watt panel can convert sunlight into 100 watts of electricity for every hour it receives peak ...



What is the wattage limit for solar charging? , NenPower

To determine the wattage limit for solar charging, it is essential to consider various factors affecting solar panel efficiency, the energy needs of ...





How many watts of solar do I need to charge my phone

Solar energy has emerged as a sustainable way to keep your devices powered, but determining how many watts of solar you need to ...



Best Solar Panels Compatible With Jackery Explorer ...

Since the max solar input watts of the Explorer 1000 power station is 126W, you can connect two or more solar panels in parallel to charge the ...

Charging Your Portable Power Station With Solar ...

Discover how to effectively charge your portable power station with solar panels. This guide covers everything from compatibility, power ...



MPPT charge controller calculator: Find the right solar charge

To select a charge controller, you'll need to calculate the maximum amount of current (in Amps) that the MPPT should be able to output. This max output current value is ...



5 Port Types for Solar Charging on Portable Power ...

However, most portable power stations support a maximum solar charging input of around several hundred watts. To wit, their corresponding ...



The 8 best portable solar panels for on-the-go ...

Going off the grid doesn't mean going without gear, so get some solar panels to keep your generator charged as you charge bravely forward.

Can I Exceed the Watt Input Limit of My Power Station?

Exceeding the watt input limit of your portable power station is generally safe due to the built-in solar charge controller that regulates input to safe levels. However, always adhere ...





Everything You Need to Know About Solar Charging Stations

There exist two types of charge controllers: PWM (Pulse Width Modulation) and MPPT (Maximum Power Point Tracking). PWM controllers are simple and cheap; they reduce ...

The best portable solar chargers in 2025, tried and ...

We found the best portable solar chargers to keep your mobile devices, flashlights, and battery packs charged and ready for camping, travel ...



What Size Solar Panel Do I Need to Charge a 12v ...

Discover the right solar panel size to efficiently charge your 12V battery. Learn how to calculate wattage, consider battery capacity, and optimize your solar ...

What happens if you put in more Solar wattage than a Delta Max ...

What happens if you put in more Solar wattage than a Delta Max (or other ecoflow system) can handle? I have a Delta Max and I just got my first panel to go with it: a Bluetti 420 watt.



[Jackery Explorer 240 quietly got an input upgrade](#)

The short version: Jackery customer support has confirmed that all new E240s have max input of 80W vs the previous 42W. The long version: I bought a Jackery E240 back ...



Power Station Calculator

The calculator estimates how long your power station can run all devices simultaneously. The battery visualization shows approximate usage ...



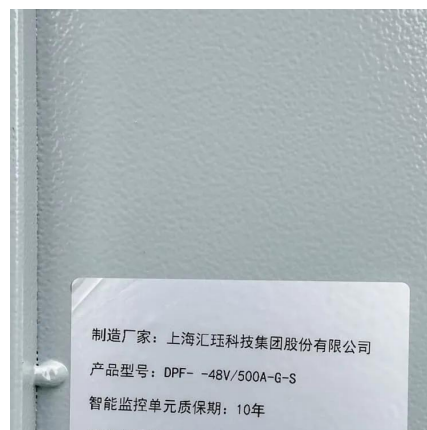
Solar Basics: Voltage, Amperage & Wattage , The Solar Addict

For example, a solar panel with a voltage of 20V and an amperage of 5A has a wattage of 100W. This means the panel can produce 100 watts of power under optimal ...



Power Station Calculator

The calculator estimates how long your power station can run all devices simultaneously. The battery visualization shows approximate usage percentage, while usage tips help you ...

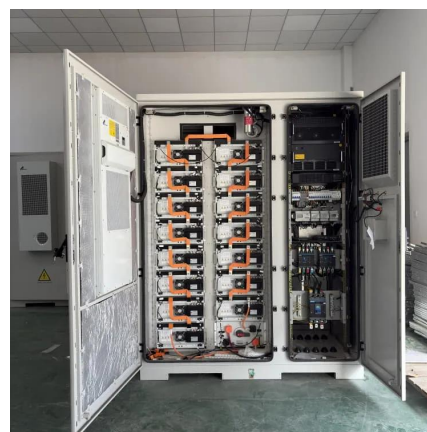


How to Maximize Your EcoFlow Delta 2 Solar Charging

In practice, the voltage and current will be closer to the Maximum Power Point (MPP) under full sun. For Heliene panels, this typically means about 40.45 volts and nearly 9 ...

Everything You Need to Know About Solar Charging ...

Discover everything you need to know about solar charging stations, including how they can power your electric car and devices with solar ...



[The Best Portable Solar Chargers of 2024](#)

Portable solar chargers juice up devices off the grid and on the go. We tested the leading portable solar chargers to find the best of 2024.



Can I Exceed the Watt Input Limit of My Power Station?

Exceeding the watt input limit of your portable power station is generally safe due to the built-in solar charge controller that regulates input to ...



[EcoFlow Delta 2 Solar Review: Is it a Must-Have?](#)

We tested the EcoFlow Delta 2 Max solar generator as a portable power and renewable energy solution. See its performance and use cases.

MPPT charge controller calculator: Find the right solar ...

To select a charge controller, you'll need to calculate the maximum amount of current (in Amps) that the MPPT should be able to output. This max ...



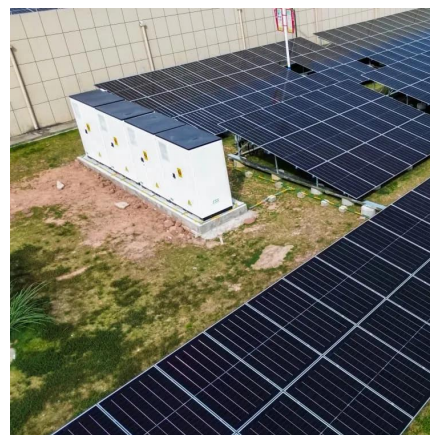


What is the maximum wattage of solar charging? , NenPower

The maximum wattage obtainable is significantly determined by the efficiency of the solar panels in use. Modern solar panels boast efficiency ratings often exceeding 20%, ...

The Ultimate Guide to EcoFlow Portable Power Station Specs

Capacity indicates the maximum amount of electricity a portable power station can store in its battery when fully charged. If you allow your portable power station to discharge completely ...



Contact Us

For catalog requests, pricing, or partnerships, please visit:
<https://www.talbert.co.za>