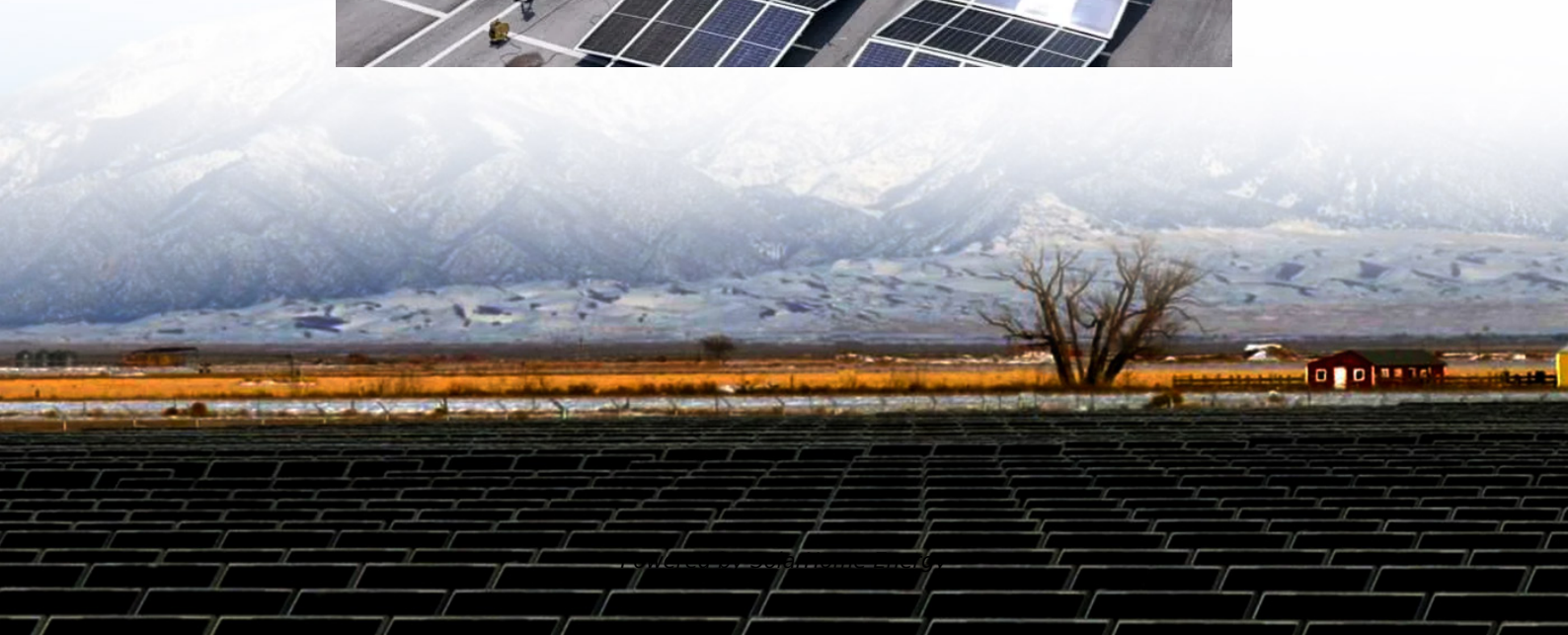


What is the maximum power that the inverter can use





Overview

Can an inverter run over rated power?

A: No. The inverter's rated power is the maximum power it can sustain and safely output. If an appliance is run over this power, it will cause the inverter to overload, automatically cut off, or even be damaged.

How much power does an inverter need?

It's important to note what this means: In order for an inverter to put out the rated amount of power, it will need to have a power input that exceeds the output. For example, an inverter with a rated output power of 5,000 W and a peak efficiency of 95% requires an input power of 5,263 W to operate at full power.

What are inverter specifications?

Specifications provide the values of operating parameters for a given inverter. Common specifications are discussed below. Some or all of the specifications usually appear on the inverter data sheet. Maximum AC output power This is the maximum power the inverter can supply to a load on a steady basis at a specified output voltage.

Do I need a 1000 watt inverter?

It is especially necessary when you have inductive loads (those with motors) or when multiple loads start simultaneously. Hence, when purchasing a DC/AC inverter, you should refer to the nominal power. In other words, if your installer tells you that you need a 1000 W inverter, they are referring to the nominal power.

What is the nominal power of an inverter?

This is the first value that an inverter displays; for example, an indicative form could be 500 W / 1000 W maximum. In this case, the nominal power is 1000 W. The nomenclature in the image above is also used. This is the amount of



power that the inverter is capable of supplying continuously under normal operating conditions.

How to choose a power inverter?

Second, select an inverter. For this example, you will need a power inverter capable of handling 4500 watts. The continuous power requirement is actually 2250 but when sizing an inverter, you have to plan for the start up so the inverter can handle it. Third, you need to decide how long you want to run 2250 watts.



What is the maximum power that the inverter can use



[The Best Inverter For High Power Solar Panels](#)

What's The Best Inverter For High Power Solar Panels? High power solar panels only perform as well as the inverter they're connected to. Choosing the best ...

How Big Of an Inverter Can My Car Handle , Expert Guide

To determine the largest inverter your car can handle, you will first need to assess your current car's voltage and current demands. Today, most vehicles can operate a 110v inverter, ...



What Can a 600W Inverter Run? The Ultimate Guide to 600 Watt Inverters

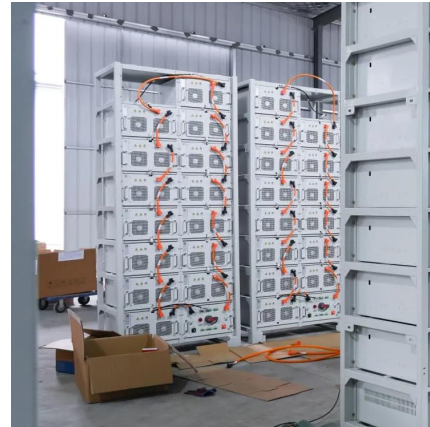
Discover what a 600w inverter can run, from laptops to small appliances. Learn usage tips, battery needs, and best practices for off-grid or backup power.

Inverter Peak Power vs Rated Power: What it is and ...

The inverter's rated power is the maximum power it can sustain and safely output. If an



appliance is run over this power, it will cause the ...



[What Can A 150W Inverter Run? \(Explained!\)](#)

What can a 150W inverter run? The "150-watt" specification indicates the maximum power output capacity of the inverter. In simpler terms, ...



How to Calculate the Maximum Output Power of a Power Inverter

In this article, we go over how to calculate the maximum output power of a power inverter from the DC battery supplying it.



What Size Inverter Do I Need?

An inverter needs to supply two needs: Peak or surge power, and the typical or usual power. Surge is the maximum power that the inverter can supply, usually for only a short time (usually ...



What is the max inverter size I can use with a 100Ah lithium battery?

A 1000W to 2000W inverter works well with a 100Ah lithium battery, but power needs, inverter type, and efficiency should be considered. Choosing the right setup ensures ...



Inverter Peak Power vs Rated Power: What it is and Why It Matters

The inverter's rated power is the maximum power it can sustain and safely output. If an appliance is run over this power, it will cause the inverter to overload, automatically cut ...

[What Is A Power Inverter , Schumacher Electric](#)

The power inverter allows you to operate these devices with power from your vehicle by turning it into current that you can use. In addition to ...



Nominal and maximum power of an inverter: Are they the same?

We explain what nominal and maximum power are, their usage, and which one is more important when purchasing a DC/AC inverter



Inverter Amp Draw Calculator

It determines how many devices you can power and how long your inverter can function. In this article, let's explore the inverter amp draw calculator for 1000W, 1200W, and ...

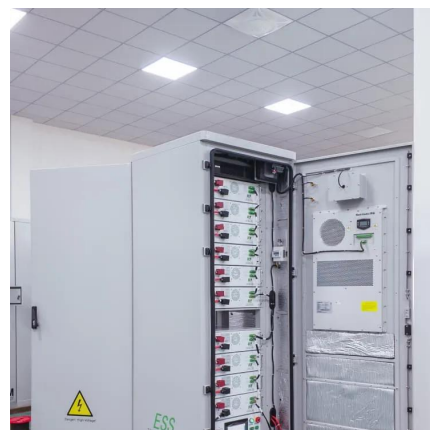


What Size Inverter Do I Need?

An inverter needs to supply two needs: Peak or surge power, and the typical or usual power. Surge is the maximum power that the inverter can supply, ...

A Guide To Solar Inverter Sizing

Solar inverters are rated according to their maximum output in VA, KVA, or Watts. A 5kw inverter will deliver a maximum of 5000 watts of AC power. Microinverters coupled with a single solar ...





What Will a 750 Watt Inverter Run?

Whenever possible, aim to utilize the inverter at up to 80% of its full power rating. For instance, if you have a 750 watt inverter, try connecting appliances with a maximum power ...

[Inverter Basics and Selecting the Right Model](#)

An inverter needs to supply two needs - Peak, or surge power, and the typical or usual power. Surge is the maximum power that the inverter can supply, ...



[What Can a 5000 Watt Inverter Run? , Complete ...](#)

Discover what a 5000W power inverter can run, including home appliances, tools, and RV systems. Learn about power requirements, surge ...

MWXNE , How to Select the Right Power Inverter for ...

Choosing the right inverter for your home is crucial for uninterrupted power during outages. Learn how to calculate inverter power ...



How Big Of an Inverter Can My Car Handle , Expert Guide

This is also known as the surge power; it is the maximum power that an inverter can supply for a short time. For example, some appliances with electric motors ...



Inverter Amp Draw Calculator

It determines how many devices you can power and how long your inverter can function. In this article, let's explore the inverter amp draw ...



[Inverter Basics and Selecting the Right Model](#)

An inverter needs to supply two needs - Peak, or surge power, and the typical or usual power. Surge is the maximum power that the inverter can supply, usually for only a short time - a few ...



What Size Inverter Will Run a Home? , Fenice Energy

What is an Inverter? Why is it Important? An inverter is an electronic device that acts as a bridge between stored energy in the battery ...



What Is an Inverter: Inverter Ratings, Efficiency & More

The inverter is one of the most important and most complex components in an independent energy system. To choose an inverter, you don't have to understand its inner workings, but ...

Nominal and maximum power of an inverter: Are they ...

We explain what nominal and maximum power are, their usage, and which one is more important when purchasing a DC/AC inverter



A Guide to Solar Inverters: How They Work & How to ...

How do Solar Power Inverters Work? The solar process begins with sunshine, which causes a reaction within the solar panel. That reaction produces a DC. ...



Frequently Asked Questions About Power Inverters , DonRowe

Short Answer: The size you choose depends on the watts (or amps) of what you want to run (find the power consumption by referring to the specification plate on the appliance or tool). We ...

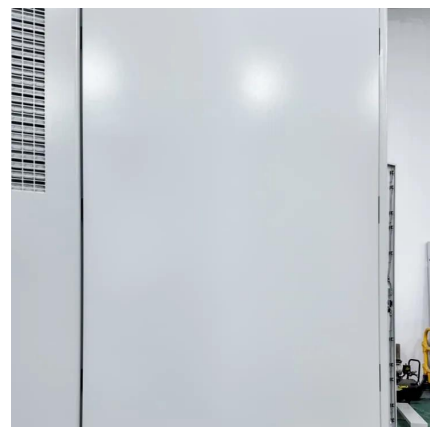


How much power can inverter provide on battery mode?

Can anyone explain what should i be looking at? To me it seems growatt sph can draw only 3000W from battery, and therefore provide only 3000W in off grid mode, even ...

[What Can A 150W Inverter Run? \(Explained!\)](#)

The "150-watt" specification indicates the maximum power output capacity of the inverter. In simpler terms, it means that the inverter can power a load of up to 150 watts.





[What Can A 150W Inverter Run? \(Explained!\)](#)

The "150-watt" specification indicates the maximum power output capacity of the inverter. In simpler terms, it means that the inverter can power ...

[How many solar panels can an inverter handle](#)

Inverter Capacity: The number of solar panels an inverter can handle is primarily determined by its power rating, usually measured in watts ...



[Inverter Specifications and Data Sheet](#)

This is also known as the surge power; it is the maximum power that an inverter can supply for a short time. For example, some appliances with electric motors require a much higher power on ...

Contact Us

For catalog requests, pricing, or partnerships, please visit:
<https://www.talbert.co.za>