

What is the industrial voltage of portable power supply





Overview

How are industrial power supply systems classified?

Industrial power supply systems are classified into different voltage classes based on their voltage levels. These classifications help in standardizing the design and safety requirements for electrical systems: Low Voltage (LV): Less than 1000 volts. Commonly used for most industrial and commercial applications.

What type of power supply is required for industrial machinery?

A variety of power sources are typically required to operate industrial machinery. This includes the plant line side ac voltage down to the electronic devices— power supplies —used to convert the ac to dc voltage. Not only is the type of power supply important, but the requirements for the application must be understood.

What is power supply voltage?

Power supply voltage is the amount of electrical power that is being used to operate a device or system. Voltage is measured in volts, and it is typically provided by either alternating current (AC) or direct current (DC). The amount of power needed by any given system or device depends on the application and its design specifications.

What are industrial power supply systems?

Industrial power supply systems are designed to meet the high demands of various industrial applications, from manufacturing plants to large commercial buildings. The voltage levels used in these systems are critical for ensuring efficient and reliable operation of industrial equipment.

What is a 240V power supply?

Application: Typically used for three-phase motor loads and other industrial equipment that do not require a neutral connection. Example: 240V, 480V



systems. Adhering to voltage standards is crucial for ensuring the safety, reliability, and efficiency of industrial power supply systems.

What is a 12 volt power supply?

We'll break down each of these below in greater detail. The 12-volt DC power supply is the most common voltage used in most applications. It is usually found in the majority of household appliances, such as computers, microwaves, and TV sets. This voltage is also used in large-scale commercial and industrial equipment.



What is the industrial voltage of portable power supply

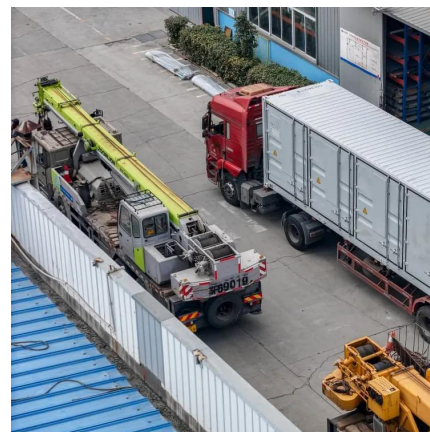


A Matter of Phases: Understanding How Commercial Voltages Work

Electric supply in the US is usually 120 or 230 for most residential applications. Most household plugs are designed for 120 volts. In commercial and industrial applications, several different ...

Power Supply Kits

Power supplies are the unsung heroes of the electronics and instrumentation world. They provide the necessary voltage and current to ensure that devices and equipment function optimally. ...



Single-Phase and Three-Phase Voltage by Country

When selecting an electric vehicle charging station, you must ensure the correct version matches your country's voltage and frequency. Level 2 EV charging ...

Different Types of Power Cables and Their Applications

Industrial power cables must withstand harsh conditions, provide high performance, and



ensure the safety and reliability of critical operations. Power Cable FAQs ...



Typical Output Voltages for Industrial Power Supplies

120V AC and 240V AC: These are standard alternating current (AC) output voltages for industrial power supplies that need to provide power to equipment designed for ...



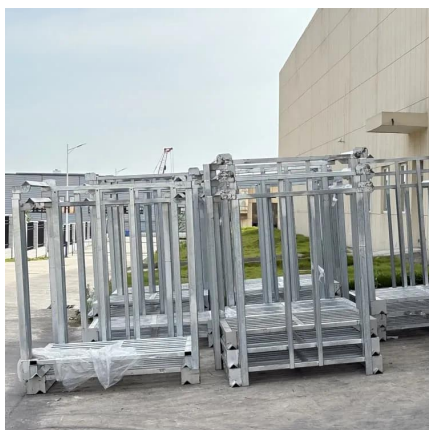
Standard and Common Voltage Levels in the US and CA

From 1500 to 3000 watts. This unit provides 24 VDC Industrial compliant input (9-36 or 18-36VDC Range) power with a multitude of output possibilities to ...



Voltage Tolerance Standard - ANSI C84.1 - Voltage ...

Utilization Voltage: Voltage at the end user load. This is generally considered to be the voltage at the terminals of the device or appliance or the voltage at the ...





Industrial Power Supplies

Find the right industrial power supply for your needs From demanding factory applications to cutting-edge research facilities, our power supplies are ...



Understanding Power Supply Voltages

From 12v to 48v, we've got it all! Before we help you choose the right unit for your needs, let's discuss what power supply voltage is in the first place. What is Power Supply ...

Amazon : Portable Dc Power Supply

Amazon : portable dc power supply1-16 of over 20,000 results for "portable dc power supply"



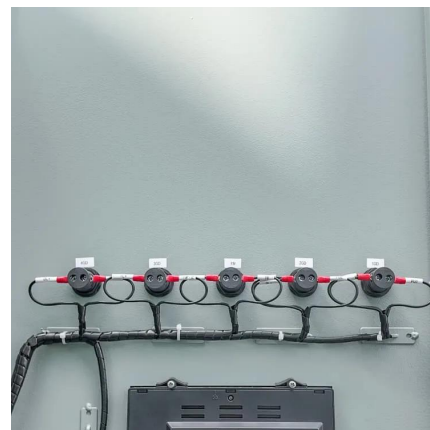
The basics of power supplies in industrial machinery

When specifying a power supply, the voltage and current and how it is controlled is obviously critical. In most cases, the input voltage is ...



Industrial Power Supply [Specifications and Glossary]

A Single-phase power supply can provide up to 230V and a three-phase power supply - up to 415V. The three-phase power supply can provide more power ...



Sola/Hevi-Duty Products , Sola Transformers, Power Supplies, Power

The SHP Series: Heavy Duty Modular Power Supplies modular design makes these units easy to customize for unusual voltage and power combinations, and the intelligent modules allow the ...

Standard and Common Voltage Levels in the US and CA

208 volts is a voltage commonly used in the US for commercial and industrial applications. It's typically used for three-phase power systems, which are used to power larger equipment and ...



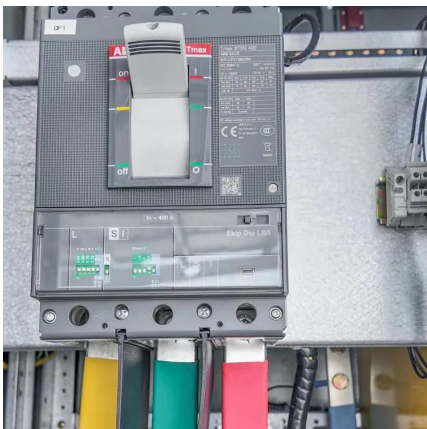


Understanding Power Supply Voltages

From 12v to 48v, we've got it all! Before we help you choose the right unit for your needs, let's discuss what power supply voltage is in the first ...

Explanation of Phases & Voltage Options for Industrial ...

Choose the right industrial generator phase and voltage. Learn the differences between single-phase and three-phase, and how conversion impacts power ...



A Matter of Phases: Understanding How Commercial ...

Electric supply in the US is usually 120 or 230 for most residential applications. Most household plugs are designed for 120 volts. In commercial and industrial ...

Understanding Power Supply Voltages

Power supply voltage is the amount of electrical power that is being used to operate a device or system. Voltage is measured in volts, and it ...



Welding Power Supplies Explained

Welding power supplies take alternating or direct current from a power line or portable generator and convert it to current usable at the welding ...



Input and output power in welding

What is Input Power In Welding? Input power, primary power, or primary voltage is the electrical energy supplied to your welding machine ...



Industrial Power Supply [Specifications and Glossary]

A Single-phase power supply can provide up to 230V and a three-phase power supply - up to 415V. The three-phase power supply can provide more power than the single-phase and it is ...



The basics of power supplies in industrial machinery

When specifying a power supply, the voltage and current and how it is controlled is obviously critical. In most cases, the input voltage is universal, accepting 85 to 264 Vac, 50/60 ...



[What Voltage is Industrial Power Supply?](#)

In the United States, industrial power supply systems typically use several standard voltage levels, each suited for specific applications. Here are the most common ...

A comprehensive guide on industrial power supplies

This guide provides expert guidance on choosing the right power supply for industrial operations, ensuring machinery safety and maximizing uptime, and offers detailed information on different ...



[The Best Portable Power Stations of 2025](#)

Portable power stations have forever squashed the notion of roughing it while camping, road-tripping, beach bumming, and otherwise hanging out or working off the grid. ...



The Ultimate Guide to AC to DC Power Supply - Jackery

The larger Jackery Explorer 2000 Plus Portable Power Station and Jackery Explorer 3000 Pro Portable Power Station are robust battery backups ...



[Guide to Common Industrial Transformer Voltages](#)

Ever wondered why industrial equipment has different supply voltages? Check out our guide to common transformer voltages for all your ...

Voltage Tolerance Standard - ANSI C84.1 - Voltage Disturbance

Utilization Voltage: Voltage at the end user load. This is generally considered to be the voltage at the terminals of the device or appliance or the voltage at the convenience outlet to which these ...





Industrial Portable Power Supply , Industrial Portable Custom Power

From 1500 to 3000 watts. This unit provides 24 VDC Industrial compliant input (9-36 or 18-36VDC Range) power with a multitude of output possibilities to include custom systems as required. ...

Electric Power Supplies

Shop for Electric Power Supplies from Grainger Industrial Supply and get the Phase Converters, DC Power Supplies and Plug-In Transformers your business needs.



A comprehensive guide on industrial power supplies

This guide provides expert guidance on choosing the right power supply for industrial operations, ensuring machinery safety and maximizing uptime, and ...

Contact Us

For catalog requests, pricing, or partnerships, please visit:
<https://www.talbert.co.za>