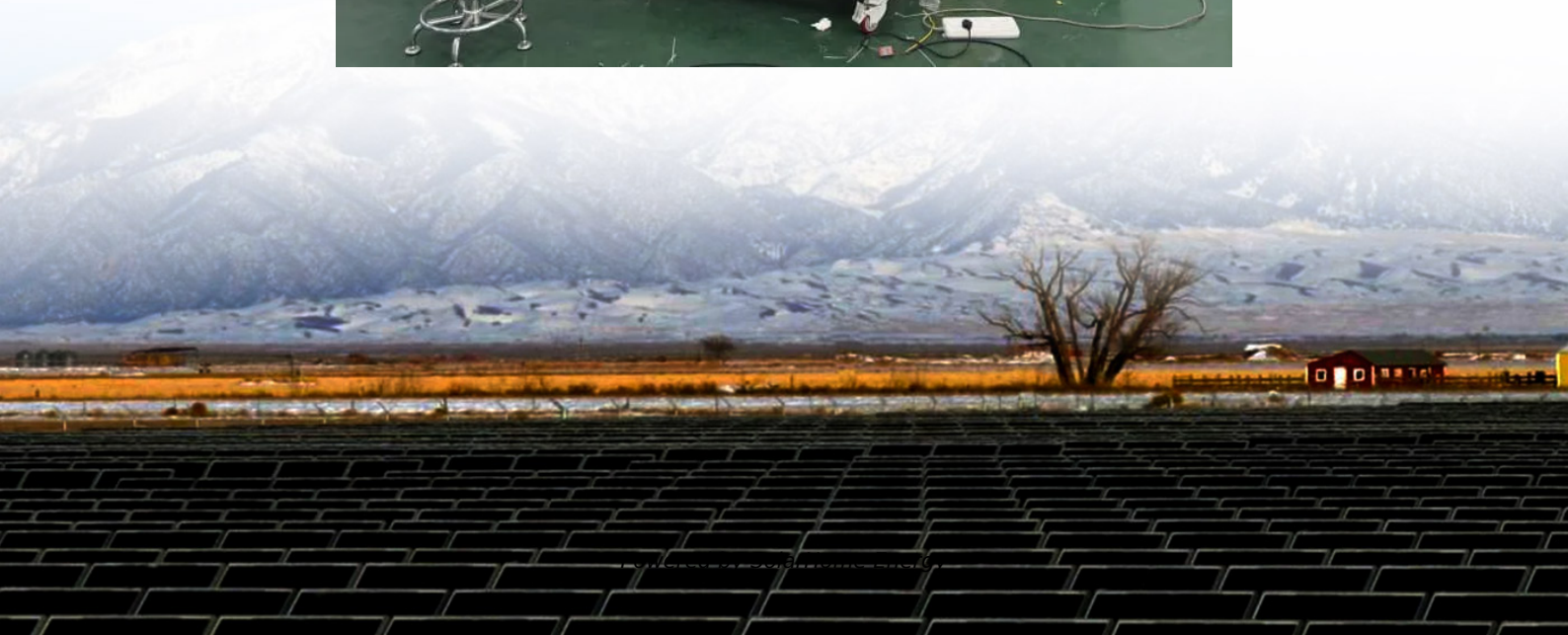


What is the indentation on solar panels





Overview

Usually, solar panels of a self-consumption system are located on the roof, although it is not the area closest to the storage system or energy meters. For security and architectural integration reasons, th.

Should solar panels face south or North?

Solar panels facing south or north in this way, it is possible to optimize the time of exposure to solar radiation and the angle of incidence, improving the capture of solar energy. What is the best tilt angle for solar panels?

The optimal tilt angle of photovoltaic solar panels is that the surface of the solar panel faces the Sun perpendicularly.

How do I determine the best orientation for my solar panels?

To determine the best orientation for your solar panels, you must take into account key factors, which include the direction, angle, and efficiency of the panels. Direction refers to the cardinal direction that the solar panels face, whether north, south, east, or west.

What factors affect solar panel orientation?

Several factors affect your solar panel orientation. The four key factors that affect your solar panel orientation are geographical location, roof pitch and orientation, shading from trees or other obstructions, and panel efficiency and power output. More information about each of these four main factors affecting solar panel orientation is below.

What is solar panel orientation?

This will set you up for success so you know the optimal conditions for peak solar panel performance. Solar panel orientation is simply which cardinal direction the panel is facing: north, south, east or west. Typical solar panel application will follow true direction rather than aligning with the magnetic poles.

Why do solar panels face different colors?



Solar panels should face the shades that can affect the panels' faces. During the day, the leftovers vary in position, but they also change during the different seasons of the year. In winter, for example, solar radiation travels toward Earth in a direction less perpendicular to the earth's surface than in summer, so shades are much longer.

Do solar panels face directly into the Sun?

For solar panels to work to their full potential, they should face directly into the sun. It is a difficult feat to accomplish considering the sun constantly moves throughout the day; it also changes angles with each season. To ensure maximum power generation from a system the correct solar panel angle and orientation is vital.



What is the indentation on solar panels

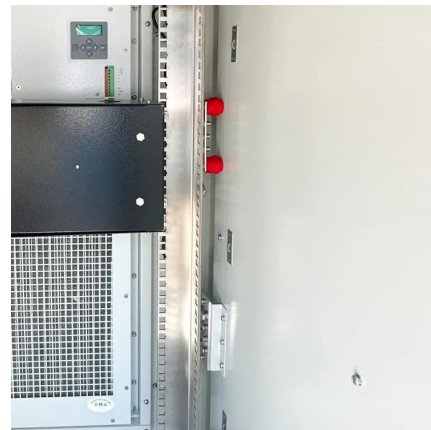


How To Install Solar Panels Step By Step: A Complete DIY Guide

Learn how to install solar panels yourself with this detailed, step-by-step guide. Discover tools, permits, common mistakes, and pro tips for a smooth DIY solar setup.

Tilt & Azimuth Angle: Find the Optimal Angle to Mount Your Solar Panels

Solar panels should face directly into the sun to optimize their output. This article explains how to find the right tilt and azimuth angle to get the most production out of your ...



What Is the Best Solar Panel Angle and Orientation?

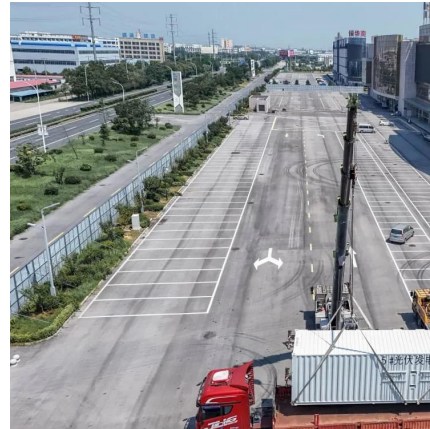
The solar panel angle is crucial for optimal energy production. Consider location, season, and roof structure for the best tilt and orientation.

What is the optimal orientation and tilt angle for solar ...

To best optimize the production of solar panels, do not underestimate the importance of their



orientation and inclination! However, it's ...

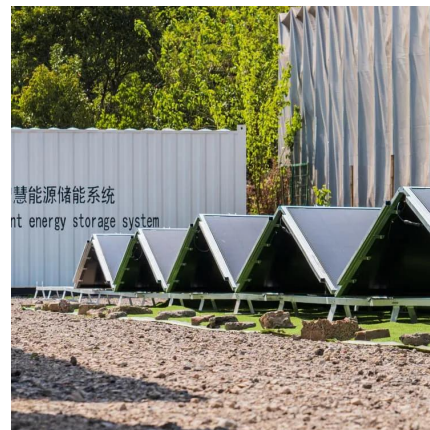


Solar Panel Angle: Tilt, Azimuth, and Magnetic Declination

To ensure maximum power generation from a system the correct solar panel angle and orientation is vital. There are two angles to consider when setting up your array; elevation ...

How to Seal Solar Panels (Must Know!)

Solar panel installation is an essential part of most renewable energy projects, but many people forget to seal them after they are put up. ...



Best Angle for Solar Panels: It's Not Your Latitude

The best direction for solar panels is true south in the northern hemisphere and true north in the southern hemisphere. The direction you face your solar panels is also called ...



What is the optimal orientation and tilt angle for solar panels

To best optimize the production of solar panels, do not underestimate the importance of their orientation and inclination! However, it's not always about producing a ...

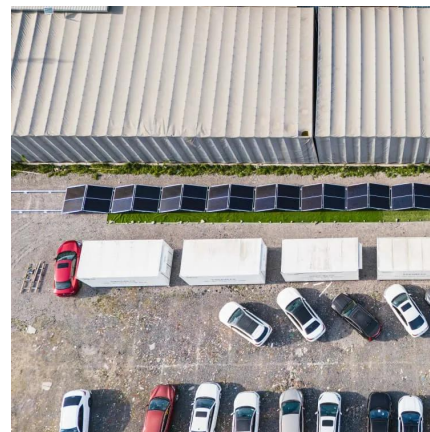


[The Best Angle for Solar Panel Installation](#)

When it comes to positioning solar panels, there are two angles to consider. Tilt angle: The solar panels' vertical angle. The lower the angle, the more they face up to the sky. ...

Best Angle And Orientation For Solar Panels - Forbes ...

In this article, we'll explain what solar panel orientation and angles are and the impact they have on the efficiency of your panels.



How Temperature Affects Your Solar Panel Output (With ...

Temperature plays a pivotal role in your solar panel's performance, directly impacting your energy savings and return on investment. While solar panels harness sunlight ...



[Roof Pitch for Solar Panels Calculator](#)

Roof Design and Solar Panel Installation
Understanding Roof Slopes The slope or pitch of a roof plays a significant role in determining the most efficient ...

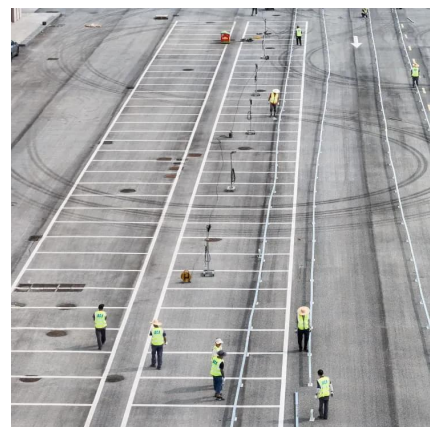


How do solar panels work? Everything you need to know

This guide has all the basics you need to know about solar, including how solar energy is produced and how solar panels are made.

Best Angle And Orientation For Solar Panels - Forbes Home

In this article, we'll explain what solar panel orientation and angles are and the impact they have on the efficiency of your panels.



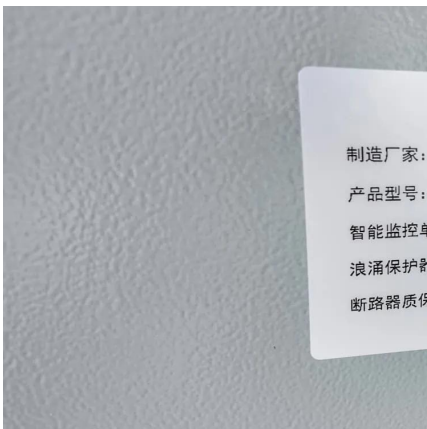


Solar Panel Angle: Tilt, Azimuth, and Magnetic ...

To ensure maximum power generation from a system the correct solar panel angle and orientation is vital. There are two angles to consider ...

Solar panel

What are Solar Panels Made of? The main component of any solar panel is a solar cell. Specifically, a number of solar cells are used to build a single solar ...



Solar panel inclination angle and orientation

The optimal tilt angle of photovoltaic solar panels is that the surface of the solar panel faces the Sun perpendicularly. However, the angle of incidence of solar radiation varies ...

Solar Panel Reflection Problems: A Comprehensive Guide to

Explore our guide on identifying and solving solar panel reflection problems. Gain insights on boosting your solar power system's efficiency.



[How To Seal Between Solar Panels \(Do This!\)](#)

The installation process of solar panels cannot be complete without sealing between them. Unfortunately, most people forget this vital detail, and ...



Best Angle for Solar Panels: It's Not Your Latitude

Learn how to get the best angle for solar panels for your location, or calculate your optimal solar panel tilt angle with our free calculator.



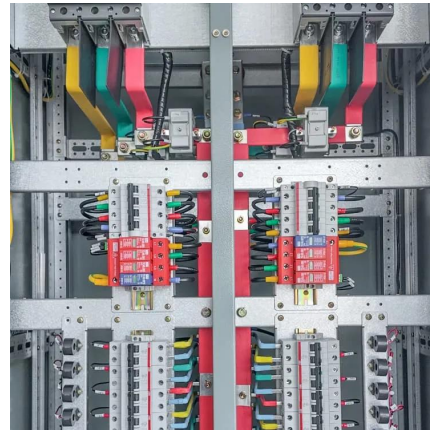
The Pros and Cons of Solar Energy

Solar energy is renewable, helps with energy independence, and lowers energy bills. Pros include a smaller carbon footprint, higher home ...



How To Read Your Solar Panel Meter: Mastering The ...

How To Read Your Solar Panel Meter Learn the basics of reading your solar panel meter with our comprehensive guide. Understand power output, energy ...



Solar Panel Orientation: Everything You Need to Know

To determine the best orientation for your solar panels, you must take into account key factors, which include the direction, angle, and efficiency of the panels. Direction refers to ...

Solar Panel Angles, Orientation, & Reverse Tilt Setup

Determining the best location, angle, and orientation for your panels when they are being installed will help ensure maximum efficiency.



[IR-30 BallastRack\(TM\) Solar Module Racking System](#)

Fixed 30° ballasted ground mount solar module racking system capable of withstanding wind speeds of 150MPH and can rack any size solar panel.



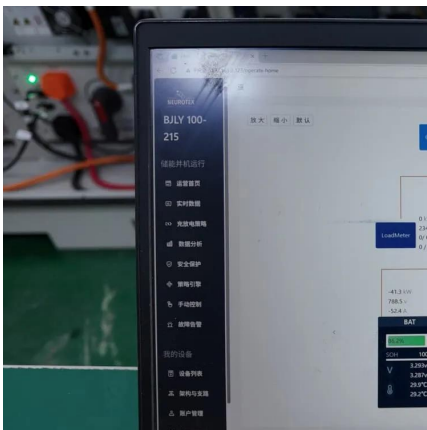
How to Connect Solar Panels to the Grid: A Step-by ...

Master how to connect solar panels to the grid with our step-by-step guide. Make your renewable energy journey simple, effective, and efficient.



Tilt & Azimuth Angle: Find the Optimal Angle to Mount ...

Solar panels should face directly into the sun to optimize their output. This article explains how to find the right tilt and azimuth angle to get ...



The Best Angle for Solar Panel Installation

When it comes to positioning solar panels, there are two angles to consider. Tilt angle: The solar panels' vertical angle. The lower the angle, the ...





How to Find the Best Orientation and Angle of Solar Panels?

Putting solar panels at the optimal angle and to the best orientation is essential to obtain the maximum energy in a solar power system. To maximize the energy conversion efficiency, use ...

Contact Us

For catalog requests, pricing, or partnerships, please visit:
<https://www.talbert.co.za>