

What is the current of the base station power supply





Overview

What are the components of a base station?

Power Supply: The power source provides the electrical energy to base station elements. It often features auxiliary power supply mechanisms that guarantee operation in case of lost or interrupted electricity, during blackouts. **Baseband Processor:** The baseband processor is responsible for the processing of the digital signals.

How much power does a cellular base station use?

This problem exists particularly among the mobile telephony towers in rural areas, that lack quality grid power supply. A cellular base station can use anywhere from 1 to 5 kW power per hour depending upon the number of transceivers attached to the base station, the age of cell towers, and energy needed for air conditioning.

How does a base station work?

It usually connects the device to other networks or devices through a dedicated high bandwidth wire of fiber optic connection. Base stations typically have a transceiver, capable of sending and receiving wireless signals; Otherwise if they only send the trailer it will be considered a transmitter or broadcast point only.

Why do cellular base stations need maintenance?

Cellular base stations use power without any interruption and also needs maintenance. The increase in demand of power base stations from Indian telecommunication industry is a big challenge, especially in rural India.

How to design a solar-powered base station?

In order to design and implement a solar-powered base station, PVSYST simulation software has been used in various countries including India, Nigeria, Morocco, and Sweden. This software allows for estimation of the



number of PV panels, batteries, inverters, and cost of production of energy considering the geographical and other design parameters.

What are the properties of a base station?

Here are some essential properties: Capacity: Capacity of a base station is its capability to handle a given number of simultaneous connections or users.

Coverage Area: The coverage area is a base station is that geographical area within which mobile devices can maintain a stable connection with the base station.



What is the current of the base station power supply



Communications System Power Supply Designs

Unique solutions for DSL, VoIP and 3G Base Stations illustrate the wide range of power system architectures and the opportunities available for higher level integration.

What is a base station energy storage power station , NenPower

A base station energy storage power station refers to a facility designed to store energy generated from various renewable sources and supply it efficiently to power base ...



Size, weight, power, and heat affect 5G base station ...

5G NR brings fundamental changes to the gNodeB's power amplifier (PA) and power-supply unit (PSU). These changes directly affect ...

Telecom Base Station Power System Solution

With advanced design and manufacturing facilities, our products are at the leading edge of

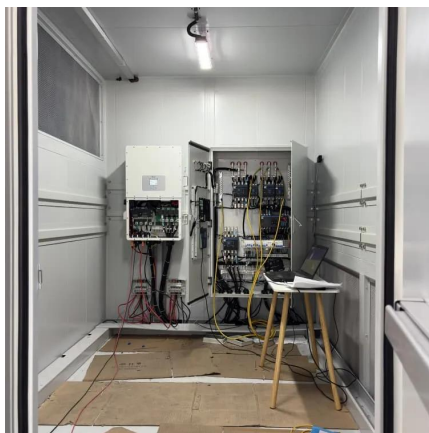


power technology, employing state-of-the-art components and production technology.



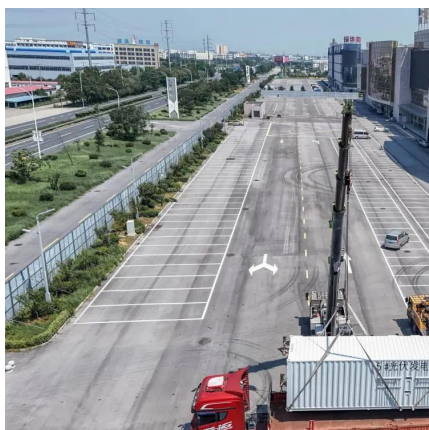
Selecting the Right Supplies for Powering 5G Base Stations

Consequently, a company like ADI, which specializes in all aspects of the base station RF chain and has thorough knowledge of power management tools required for powering these ...



Base Stations

Power Supply: The power source provides the electrical energy to base station elements. It often features auxiliary power supply mechanisms that guarantee operation in ...



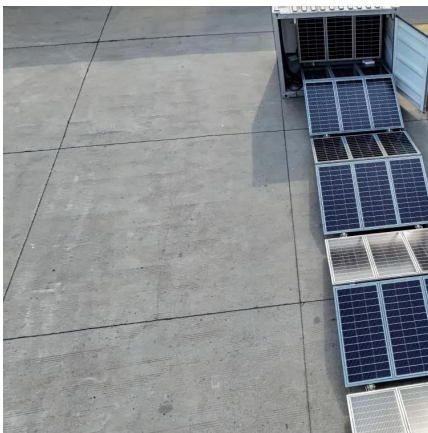
What is Base load?

Base load power sources are those facilities that run nonstop to satisfy the bare minimum of power demand. Large-scale base load facilities ...



Power Base Station

Maximum base station power is limited to 24 dBm output power for Local Area base stations and to 20 dBm for Home base stations, counting the power over all antennas (up to four).



Difference between Base Load and Peak Load Power ...

The examples of power generating stations or power plants that are treated as the base load power plants are Coal base thermal power plant, ...

Power supply : r/HamRadio

A simple switching power supply will do (you don't have to get a typical bench supply that you would use for circuit development). A linear power supply will produce cleaner power, and less ...



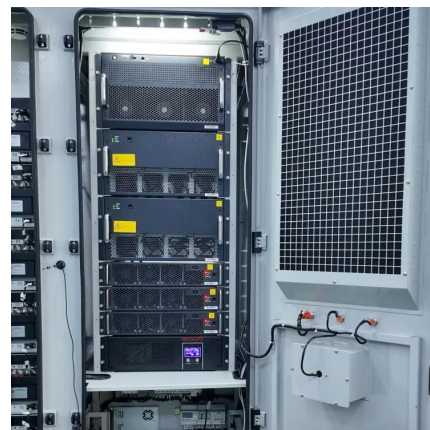
Why does the communication base station use -48V ...

Historically, the communications industry equipment has been using -48V DC power supply. -48V is also known as positive ground.



[Base station power cable : r/simplisafe](#)

Anybody know a good replacement base station power cable? Simply safe is currently OUT OF STOCK and I've been using batteries for about a week . They say to keep trying their 3rd party ...



Recommended 5 GMRS Base Stations

The power supply is a critical aspect of any GMRS base station. Regularly inspect the power connections for loose wiring or damaged cords, ...

Selecting the Right Supplies for Powering 5G Base Stations

Consequently, a company like ADI, which specializes in all aspects of the base station RF chain and has thorough knowledge of power management tools required for powering these ...





The power supply design considerations for 5G base ...

This is when the PSU is no longer powering the PA, which is the main power draw, but still needs to power other electronics. The current target ...

Base Station Power Recommendations

Is it typically acceptable to use a basic wall outlet for most power supplies, I'm thinking around 35 amps at the most for the supply. Is it a better idea to have a dedicated ...



Power station

A power station, also referred to as a power plant and sometimes generating station or generating plant, is an industrial facility for the generation of electric ...

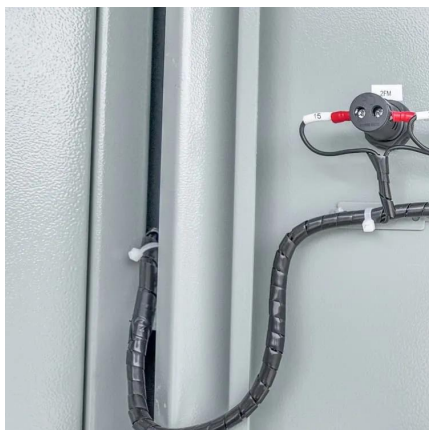
Size, weight, power, and heat affect 5G base station designs

5G NR brings fundamental changes to the gNodeB's power amplifier (PA) and power-supply unit (PSU). These changes directly affect operators' capital expenditures ...



[Where To Find HTC Vive Base Station Power Adapter](#)

Looking for a power adapter for your HTC Vive base station? Discover where to find the best options and ensure your VR experience continues uninterrupted.



[Power Supply , RadioReference Forums](#)

2) Since good quality linear power supplies are fairly expensive, consider a power supply that can handle at least 3 times your current needs.
...



[The Best Ham Radio Power Supply \(Linear and ...](#)

From having to consider the safety features to the cooling systems, choosing the best ham radio power supply isn't easy.





Why does the communication base station use -48V power supply?

Historically, the communications industry equipment has been using -48V DC power supply. -48V is also known as positive ground.



Optimizing the power supply design for

Communication base station power system design scheme When selecting a power system design scheme, it is necessary to consider a variety ...

Power supply for base station.

If you don't need the illuminated voltage and current meters you can find this 35 amp power supply for about \$140 or so, I think. It's nicely built but you do hear the fan when it ...



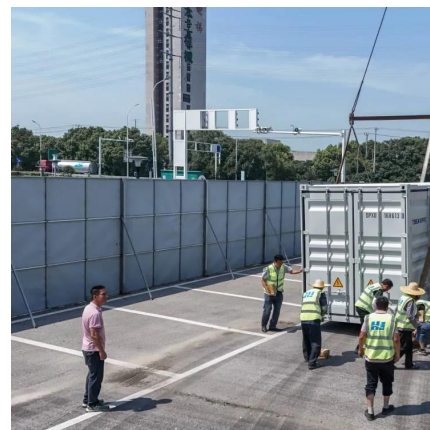
The power supply design considerations for 5G base stations

This is when the PSU is no longer powering the PA, which is the main power draw, but still needs to power other electronics. The current target for low-load efficiency is about 30 W.



Optimal configuration for photovoltaic storage system capacity in ...

Base station operators deploy a large number of distributed photovoltaics to solve the problems of high energy consumption and high electricity costs of 5G base stations. In this ...



Base Stations

Power Supply: The power source provides the electrical energy to base station elements. It often features auxiliary power supply mechanisms ...

Contact Us

For catalog requests, pricing, or partnerships, please visit:
<https://www.talbert.co.za>