

What is the charging power of the communication base station battery





Overview

What makes a telecom battery pack compatible with a base station?

Compatibility and Installation Voltage Compatibility: 48V is the standard voltage for telecom base stations, so the battery pack's output voltage must align with base station equipment requirements. Modular Design: A modular structure simplifies installation, maintenance, and scalability.

What is a battery powered charging station?

A battery-powered charging station is a digital infrastructure designed to address the major shortcomings of micromobility and clean up sidewalk clutter. It allows cities to safely welcome the transportation revolution. This charging station is highly scalable and enables location-smart parking. Cities and e-scooter operators can designate dedicated parking locations for it.

Which battery is best for telecom base station backup power?

Among various battery technologies, Lithium Iron Phosphate (LiFePO₄) batteries stand out as the ideal choice for telecom base station backup power due to their high safety, long lifespan, and excellent thermal stability.

What is a telecom battery?

Telecom batteries play a crucial role in powering equipment, supporting backup systems, and facilitating smooth operations. This comprehensive guide will delve into the types of telecom batteries, their applications, maintenance tips, and the latest advancements in battery technology. 1. Understanding Telecom Batteries 2.

Why are Telecom batteries important?

Telecom batteries are crucial in emergency power systems, providing immediate backup when the main power supply fails. This is vital for maintaining communication during disasters or emergencies. 3. Key Features of Telecom Batteries The capacity of telecom batteries is measured in amp-



hours (Ah), indicating how much energy they can store.

Why do data centers use Telecom batteries?

In data centers, telecom batteries provide backup power to servers and networking equipment. They ensure data integrity and availability during power outages. Cellular networks rely on telecom batteries to maintain service continuity.



What is the charging power of the communication base station batt

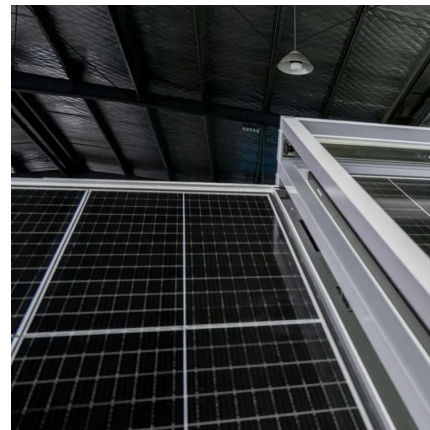


What is a base station energy storage battery? , NenPower

Base station energy storage batteries play a pivotal role in modern telecommunication networks, particularly as demand for uninterrupted service intensifies. ...

Charging station

A charging station, also known as a charge point, chargepoint, or electric vehicle supply equipment (EVSE), is a power supply device that supplies electrical ...



Understanding dc communication protocols for EV ...

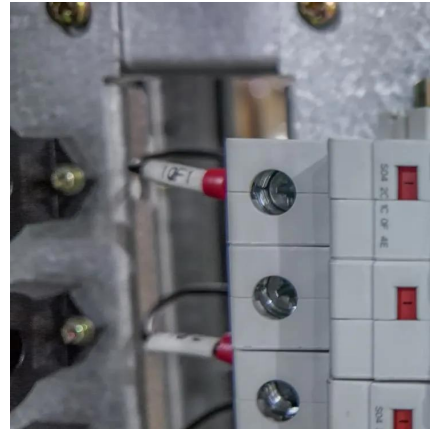
The dc communication protocol between the electric vehicle (EV) and the electric vehicle supply equipment (EVSE) occurs with the support of ...

Telecom Base Station Backup Power Solution: Design ...

Discover the 48V 100Ah LiFePO4 battery pack for telecom base stations: safe, long-lasting, and eco-

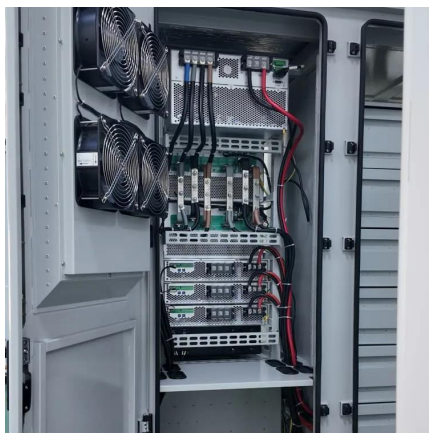


friendly. Optimize reliability with our ...



Finding the Right Battery System for Your Telecom ...

To ensure uninterrupted communication services, it's crucial to have a reliable and efficient backup power system in place. We will guide you through the ...



Telecommunication base station system working principle and ...

After the oil engine is working normally, it can provide AC input power to the rectifier module, which will re supply power to the communication equipment and charge the ...



[Communication Base Station Energy Solutions](#)

During the day, the solar system powers the base station while storing excess energy in the battery. At night, the energy storage system discharges to ...





How does the base station battery communicate with the power ...

How does a virtual battery control a base station? By regulating the charging and discharging behavior of the virtual battery of the base station in such a way that the base station avoids the ...



Selection and maintenance of battery for communication base station

Focused on the engineering applications of batteries in the communication stations, this paper introduces the selections, installations and maintenances of batteries for communication ...

[CharlN Whitepaper Megawatt Charging System \(MCS\)](#)

1.1. MCS Importance to Battery Electric Commercial Vehicle Industry There are two key technologies to broad acceptance of battery electric commercial vehicles: increased range and ...



[Comprehensive Guide to Telecom Batteries](#)

This comprehensive guide will delve into the types of telecom batteries, their applications, maintenance tips, and the latest advancements in battery technology.



Base Stations

It provides for the interchange of data between the base station and other network components, hence communication with extrinsic systems and ...



Multi-objective cooperative optimization of communication base station

Recently, 5G communication base stations have steadily evolved into a key developing load in the distribution network. During the operation process, scientific dispatching ...

Communication Base Station Energy Solutions

During the day, the solar system powers the base station while storing excess energy in the battery. At night, the energy storage system discharges to supply power to the base station, ...





Lithium-ion Battery For Communication Energy Storage System

With their small size, lightweight, high-temperature performance, fast recharge rate and longer life, the lithium-ion battery has gradually replaced the traditional lead-acid battery ...

Top Echo Dot Battery Base Options for Every Generation

Discover the best Echo Dot Battery Base for each generation. Make your Alexa portable and enjoy the freedom of a cord-free experience.



Communication Base Station Backup Power LiFePO4 Supplier

Why LiFePO4 battery as a backup power supply for the communications industry? 1.The new requirements in the field of communications storage. For a long period of time, ...

[Communication Base Station Backup Battery](#)

The ece energy wholesale telecom battery offers reliable, cost-effective backup power for communication networks. The telecom lithium battery is easily ...



Battery technology for communication base stations

Feasibility study of power demand response for 5G base station In order to ensure the reliability of communication, 5G base stations are usually equipped with lithium iron phosphate cascade ...



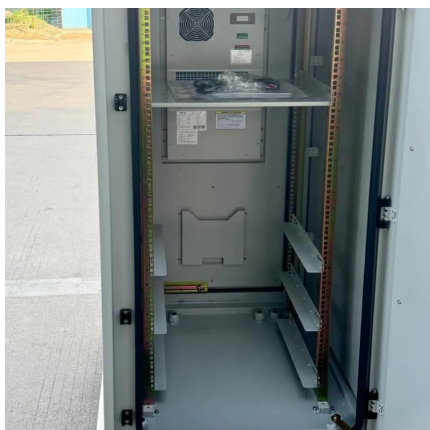
Selection and maintenance of batteries for communication base ...

This article focuses on the engineering application of the battery in the power supply system of the communication base station, and focuses on the selection, installation and maintenance of the ...



[10 Best GMRS Base Station Radio 2025: Most ...](#)

In this article, we will review and talk about some of the best GMRS base stations. When buying a GMRS base station, you should ...





5g base station energy storage battery specifications

?MANLY Battery?Lithium batteries for communication base stations With the gradual application of 5G technology, it will have a profound impact on economic and social ...



COMMUNICATION BASE STATION BACKUP BATTERY

What is the voltage of the base station lead-acid battery is a three-stage charging procedure for lead-acid batteries. A lead-acid battery's nominal voltage is 2.2 V for each cell. For a single ...



Battery technology for communication base stations

In order to ensure the reliability of communication, 5G base stations are usually equipped with lithium iron phosphate cascade batteries with high energy density and high charge and ...



What is a base station energy storage battery?

Base station energy storage batteries play a pivotal role in modern telecommunication networks, particularly as demand for uninterrupted service ...



Communication Base Station Backup Battery

The ece energy wholesale telecom battery offers reliable, cost-effective backup power for communication networks. The telecom lithium battery is easily mounted in an environmentally ...



Telecom Base Station Backup Power Solution: Design Guide for ...

Discover the 48V 100Ah LiFePO4 battery pack for telecom base stations: safe, long-lasting, and eco-friendly. Optimize reliability with our design guide.

Selection and maintenance of batteries for communication base stations

This article focuses on the engineering application of the battery in the power supply system of the communication base station, and focuses on the selection, installation and maintenance of the ...





Overview of Telecom Base Station Batteries

Definition Telecom base station battery is a kind of energy storage equipment dedicatedly designed to provide backup power for telecom base stations, ...

Selection and maintenance of battery for communication base ...

Focused on the engineering applications of batteries in the communication stations, this paper introduces the selections, installations and maintenances of batteries for communication ...



Contact Us

For catalog requests, pricing, or partnerships, please visit:
<https://www.talbert.co.za>