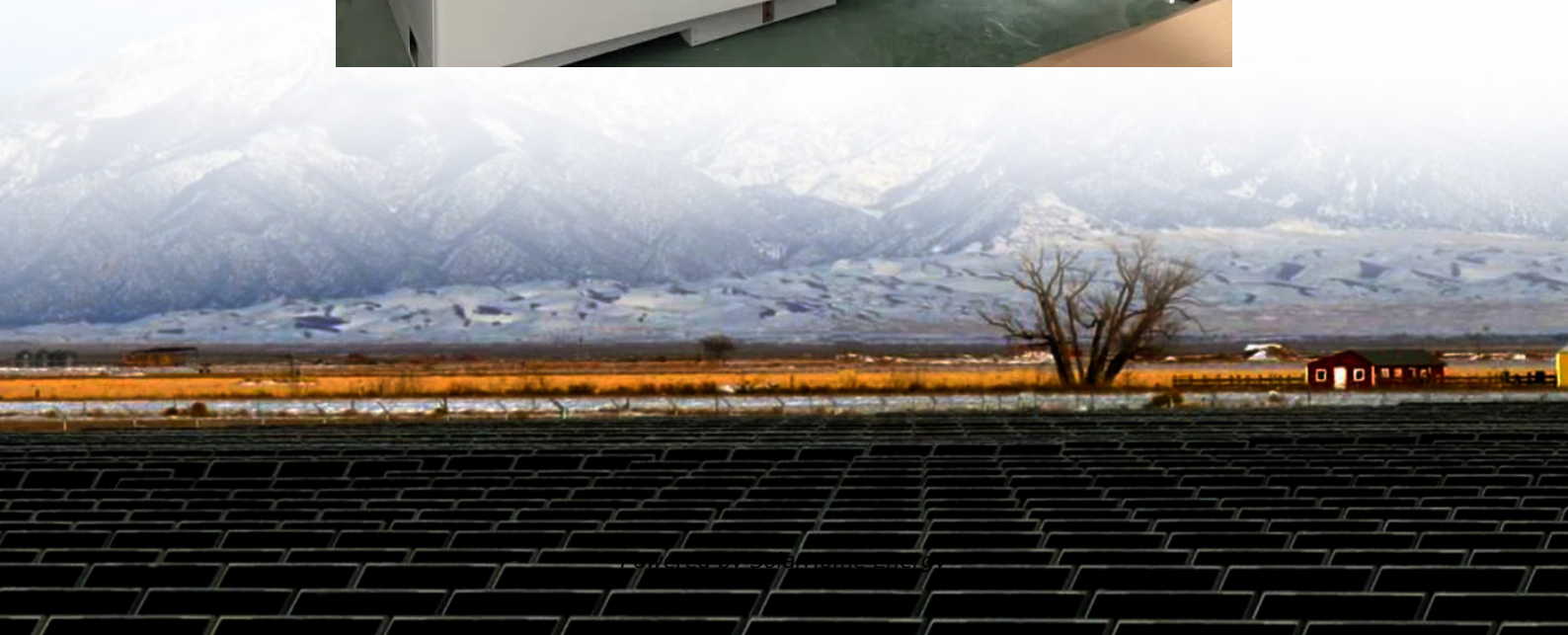


What is the Current of a 20W Photovoltaic Panel





Overview

A 20W solar panel typically generates around 1.66 amps under ideal conditions, given that power (in watts) is calculated by multiplying voltage (in volts) by current (in amps). This calculation is based on a common nominal voltage of 12 volts ($20W/12V = 1.66A$). What is a 20 watt solar panel?

20 Watt Solar Panels (Power - Charge - Kits - Control) - Solar Panel Installation, Mounting, Settings, and Repair. 20-watt solar panels are one of the smallest solar panel sizes at the lowest price. They are helpful for many applications in the home and on the go. Here are some of the key aspects of 20-watt solar panels this article covers;.

How many amps can a 20W solar panel produce?

Under optimum conditions, a 20W solar panel can create 1.34 amps per hour. For example, under perfect conditions, the panel will produce 20 Watts for 7 hours per day, 7 days per week, for 980 Watts. To reduce total charging time, you can connect several panels.

How much does a 20 watt solar panel cost?

What is the Average Cost of a 20W Solar Panel?

On average, a monocrystalline solar panel costs between fifty and one hundred dollars, and a small portable 20-watt solar panel will cost anywhere between thirty to one hundred dollars to charge phones and other mobile devices.

How many Watts Does a solar panel produce?

For instance, at night, when Solar Irradiance is 0 Watts/m², the solar panel, regardless of its rated power, will produce 0 Watts. However, in some situations, when the Solar Irradiance surpasses 1000 Watts/m², an occurrence known as “Over-Irradiance,” a 100-watt solar panel might generate more than 100 Watts of power.



What are the different solar panel voltages?

Namely, we have to come to terms with the fact that there are several different voltages we are using for solar panels (don't worry, all of these make sense, we'll explain it). These solar panel voltages include: Nominal Voltage. This is your typical voltage we put on solar panels; ranging from 12V, 20V, 24V, and 32V solar panels.

What are the best 20 watt solar panels?

Some of the Best 20-watt solar panels available on the market are the following: 20-watt solar panel kit by TopSolar. 20-watt poly crystalline 12V solar panel kit by Suner Power. 20-watt 12V solar trickle charger by TopSolar. 20-watt 12V poly solar panel by Rich Solar. 20-watt mono crystalline 12V solar panel by HQST.



What is the Current of a 20W Photovoltaic Panel

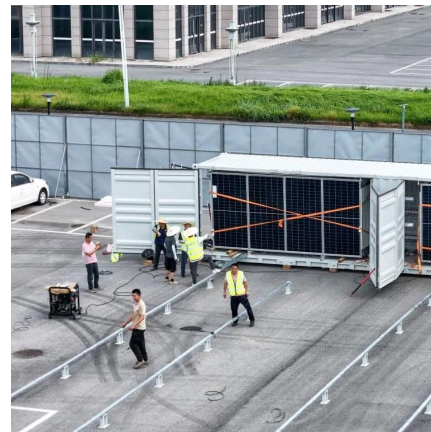


How many volts is equal to a 20w solar panel?

For a 20W solar panel, if operating at 18V, the current would be approximately 1.11A, and at 22V, the current would be around 0.91A, 4. ...

Solar Panel Output Voltage: How Many Volts Do PV Panel ...

To be more accurate, a typical open circuit voltage of a solar cell is 0.58 volts (at 77°F or 25°C). All the PV cells in all solar panels have the same 0.58V voltage. Because we connect them in ...



The 9 Best Solar Chargers of 2025 , Tested & Rated

If you want an all-around 100-watt solar panel, this is a great option. Our main tester stated, " This panel really wowed me, and I recommend it to ...

Does a 20 watt, 24 volt system have enough amps to charge?

So the question I have is, "will 0.56 amps enough current to charge the batteries"? Do I need to get



an extra solar panel to double the amp output?
Should I just get a larger 24 ...



Can A 20W Solar Panel Charge A 12v Battery?

A 20W solar panel generates a relatively small amount of power compared to larger panels. This makes it unsuitable for powering energy-intensive devices or meeting high electricity demands.

What is Parallel Connection in Solar Panels?

The current result of a solar panel depends on factors such as its area (surface) and the amount of sunlight it receives, known as irradiance. ...



What is the concept of 20w solar back panel , NenPower

The concept of a 20w solar back panel revolves around a compact solar power solution tailored for energy generation, specifically in portable or smaller applications. 1. The ...



What Can I Do With A 20-Watt Solar Panel Power?

In ideal circumstances, a 20W solar panel can generate 1.34 amps of current per hour. Typically, it is determined by multiplying the voltage (V) in ...



PRABHA 20W PV Solar Panel Module

Loom Solar Panel 20W-12V for Home Lighting System, DIY Projects, Small Battery Charging (7Ah), Pack of 1 , Max. Current - 1.04 amps & Max. Voltage - ...



Solar Panel Ratings Explained - Wattage, Current, ...

Different electrical ratings (Watt, Amps, and Volts) can necessitate different equipment, and certain panels may be better suited for particular ...



20 watt Solar Module , Go Power!

The Go Power! 20 watt Solar Module is a high efficiency solar panel for trickle charging, framed.



Solar Panel Amps Calculator (Watts to Amps) - Dot Watts®

Under optimum conditions, a 20W solar panel can create 1.34 amps per hour. For example, under perfect conditions, the panel will produce ...



What Can I Do With A 20-Watt Solar Panel Power? Guide

In ideal circumstances, a 20W solar panel can generate 1.34 amps of current per hour. Typically, it is determined by multiplying the voltage (V) in volts by the power in watts (W).

Solar Panel Wire Size (Cable Gauge + Calculations Chart)

Standard Cables For Solar Panels Solar System installers have considered the current loads, distances from charge controllers, voltage drops, and operating temperatures. ...



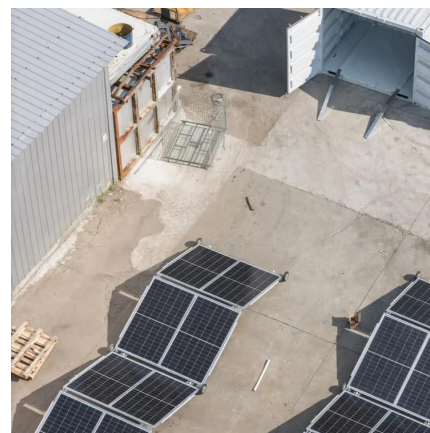


How many amps does a 20w solar panel have?

A 20W solar panel typically generates around 1.66 amps under ideal conditions, given that power (in watts) is calculated by multiplying ...

BWA-SOLAR PANEL 20W

BWA-SOLAR PANEL 20W of Banner Engineering Corporation is a SOLAR PANEL 12V 20W. ICHOME is a long-term spot supplier of BWA-SOLAR PANEL 20W, supporting sample ...



What does 20w solar panel mean? , NenPower

1. A 20W solar panel signifies a photovoltaic module capable of generating 20 watts of electrical power under standard test conditions (STC), ...

How much current does a 20w solar panel have? , NenPower

A 20W solar panel typically produces a current of approximately 1.67 amps under optimal sunlight conditions. This calculation is based on Ohm's law, where current (I) can be ...



20W 12V Solar Panel (74 x 35 cm)

This 20W 12V Solar Panel is the best quality solar panel we found in a comparative market with excellent performance even weak sunlight. It is ...



Small Solar Panel: Best price for 10 to 50 watt solar ...

Small Solar Panel : 10, 20, 40, 50 watt Solar Panel Price in India Small capacity solar panels are affordable and portable panels that are ideal for small power ...



Solar Panel Output Voltage: How Many Volts Do PV ...

To be more accurate, a typical open circuit voltage of a solar cell is 0.58 volts (at 77°F or 25°C). All the PV cells in all solar panels have the same 0.58V ...





How many amps does a 20w solar panel have? , NenPower

A 20W solar panel typically generates around 1.66 amps under ideal conditions, given that power (in watts) is calculated by multiplying voltage (in volts) by current (in amps).



20 Watt Solar Panels (Power

Under optimum conditions, a 20W solar panel can create 1.34 amps per hour. For example, under perfect conditions, the panel will produce 20 Watts for 7 hours per day, 7 days ...

How many volts is equal to a 20w solar panel? , NenPower

For a 20W solar panel, if operating at 18V, the current would be approximately 1.11A, and at 22V, the current would be around 0.91A, 4. Therefore, the volts can range ...



[20 Watt Solar Panel: Efficient Energy Solutions](#)

Discover the power of our 20 watt solar panel! Explore pricing and features to harness clean energy today. Upgrade your energy solutions with us!



Solar Basics: Voltage, Amperage & Wattage , The Solar Addict

Learn how voltage, amperage, and wattage work in solar panels with our clear and easy-to-understand guide.



Solar Panel Ratings Explained - Wattage, Current, Voltage, and

Different electrical ratings (Watt, Amps, and Volts) can necessitate different equipment, and certain panels may be better suited for particular applications and ...

Solar Panel Amps Calculator (Watts to Amps) - Dot Watts®

We usually measure or convert the watts into amps of solar panels to figure out how much current (amps) is being stored in the battery. Or we measure the amperage of the solar ...





MPPT Calculator

The MPPT calculator now has a fresh new look and a few new features: Improved support for mobile devices/small screens through the new responsive design. A setup wizard to help ...

[How many amps does a 20 watt solar panel produce?](#)

A 20 watt solar panel is a relatively small panel, and its output will depend on a number of factors, including the amount of sunlight it receives, the temperature, and the angle and orientation of ...



Contact Us

For catalog requests, pricing, or partnerships, please visit:
<https://www.talbert.co.za>