

What is a 5G rural base station





Overview

Will rural areas get 5G?

Rural areas will get a form of 5G called "low-band" or "sub-6" 5G, which will have less capacity but still have extremely low latency and be able to work with massive networks of industrial sensors. Sprint is using its existing 2.5GHz footprint to build out a 5G network that will probably be appropriate for home internet.

What is a 5G base station?

As the world continues its transition into the era of 5G, the demand for faster and more reliable wireless communication is skyrocketing. Central to this transformation are 5G base stations, the backbone of the next-generation network. These base stations are pivotal in delivering the high-speed, low-latency connectivity that 5G promises.

How many base stations will 5G have in 2025?

The U.S. has ambitious plans for 5G expansion, aiming to have more than 300,000 active base stations by 2025. This goal is being driven by investment from private telecom providers and government initiatives like the Rural 5G Fund. For businesses in the U.S., this means increasing access to high-speed connectivity.

How many 5G base stations are there in the United States?

While China leads in sheer numbers, the U.S. is making steady progress. By late 2023, the country had between 150,000 and 200,000 active 5G base stations. The deployment strategy in the U.S. is different from China's, as it relies on private investment rather than government-led initiatives. Is this article too long?

.

Why are telecom companies installing indoor 5G base stations?



To solve this, telecom companies are installing indoor 5G base stations, which are growing at a compound annual growth rate (CAGR) of over 30%. For businesses operating in offices, malls, or large commercial spaces, installing indoor 5G solutions can greatly enhance connectivity.

Who makes 5G base station equipment?

19. The top 5 telecom equipment providers for 5G base stations are Huawei, Ericsson, Nokia, ZTE, and Samsung. When it comes to 5G base station equipment, five companies dominate the market: Huawei, Ericsson, Nokia, ZTE, and Samsung. These firms provide the hardware and software needed to power the world's 5G networks.



What is a 5G rural base station



5G Base Station Growth: How Many Are Active? , PatentPC

A typical 5G base station consumes three times more power than a 4G station. This is due to the need for higher frequencies, greater bandwidth, and more antennas to ensure connectivity.

Building network with 5G microcells

These 5G nodes offer many of the same capabilities of traditional base stations. It's about the size of a pizza box and enables mmWave ...



What is ericsson 5g base station

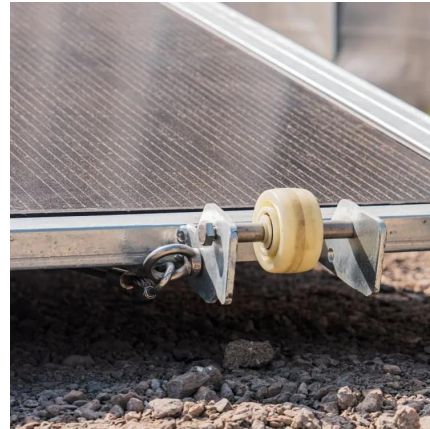
Ericsson's 5G base stations are integral to the deployment of 5G networks, offering advanced features and capabilities. Here's a detailed technical overview: 1. Architecture and ...

What is a base station and how are 4G/5G base ...

The architecture of the 5G network must enable sophisticated applications, which means the base



stations design required must also be ...

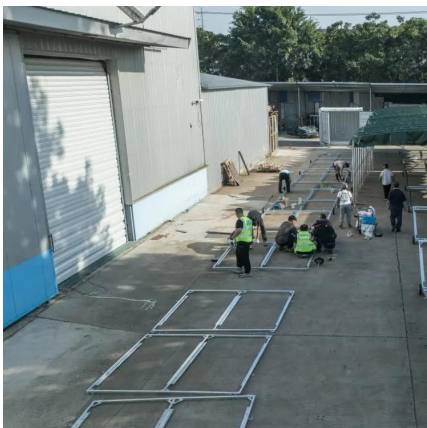


What Will 5G Do for Rural Areas?

Rural areas will get a form of 5G called "low-band" or "sub-6" 5G, which will have less capacity but still have extremely low latency and be able to work with massive networks of ...

What is a base station and how are 4G/5G base stations different?

In comparison to 4G base stations, 5G base stations often require more than twice as much electricity. The operators have two options to think about in the 5G network planning ...



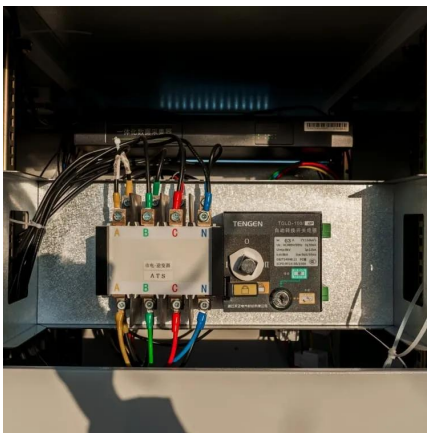
What are small cells in 5G technology

To provide a higher bandwidth signal and extend coverage for more users, 5G technology will have to use the small cell concept. What are ...



What is a GNB (gNodeB)? The Core of 5G NR , Inseego

What is a GNB (gNodeB)? The era of 5G networks, has brought another transformation to the landscape of telecommunications. Central to this ...

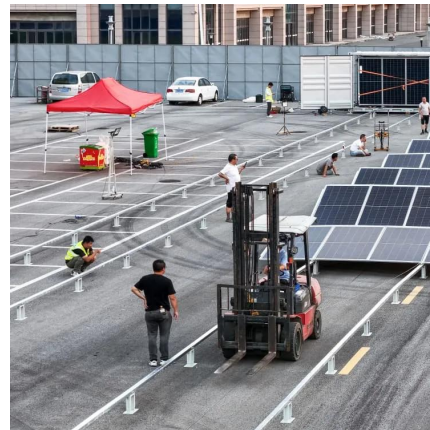


What is a base station and how are 4G/5G base ...

In comparison to 4G base stations, 5G base stations often require more than twice as much electricity. The operators have two options to think ...

Cell sites and cell towers in a mobile cellular network

A cell site is a location or "site" where a mobile network operator installs a 2G, 3G, 4G or 5G radio base station (cell tower). Mobile operators ...



Our Network Coverage & Rollout Maps

What is LTE Small Cell? A small cell is a miniature version of a standard base station which was traditionally used to boost coverage and capacity in densely ...



What is a 5G Base Station?

A 5G base station is a critical component in a mobile network that connects devices, such as smartphones and IoT (Internet of Things) gadgets, to the core network and ...



What is 5G base station architecture?

Before you can think about 5G network components, you need to consider the base station. To get started, find out what you need to know ...

5G in rural areas bridges a gap that 4G doesn't, especially low

We suspect that for the next several years, 5G deployments to rural communities will look largely like the 4G deployments that preceded them--mostly in the very long-range ...



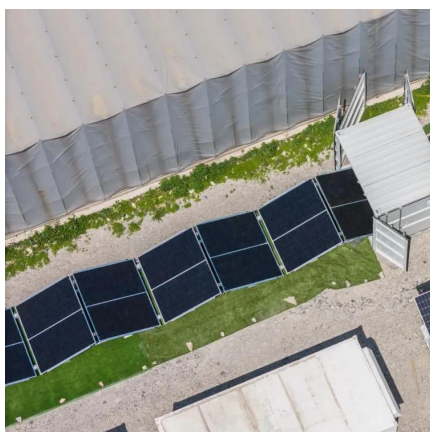
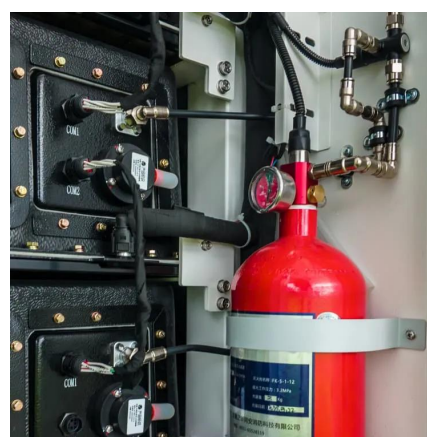


[Guide to Small Cells, HetNets and 5G](#)

'Small cells' is an umbrella term for operator-controlled low-powered mobile base stations.

[Everything You Need to Know About 5G](#)

While traditional cell networks have also come to rely on an increasing number of base stations, achieving 5G performance will require an ...

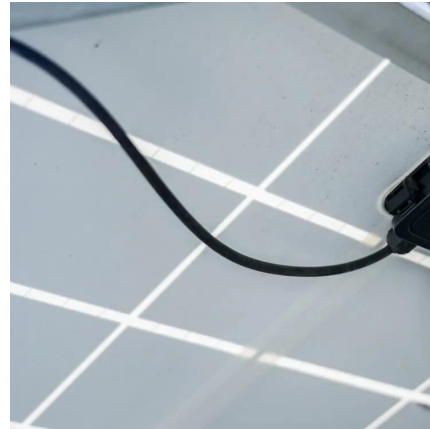


Types of 5G NR Base Stations: A Comprehensive Overview

Understanding these base stations is crucial for network planners, engineers, and businesses looking to optimize connectivity. This article provides a detailed overview of the different types ...

[China Achieves 90% 5G Coverage in Rural Areas](#)

China extends its 5G network to over 90% of villages, now encompassing all urban areas and boasting the world's largest number of 5G base stations.



What is a 5G base station?

A 5G Base Station, also Known as A GNB (Next-Generation NodeB), is a fundamental component of the fifth-generation (5G) Wireless Network Infrastructure. It serves ...

Aerial Base Stations for Global Connectivity: Is It a Feasible and

Even though achieving global connectivity represents one of the main goals of 5G and beyond wireless networks, exurban areas are still suffering frequent outages because of ...



[A guide to 5G small cells and macrocells](#)

A 5G femtocell, also called a home base station, is around the size of a paperback book and commonly used inside homes and offices. There are ...



5G NR Base Station Types

The 5G NR standard defines various base station types to cater to different deployment scenarios, user density, and coverage requirements. Here's a technical ...



Base station hardware evolution in urban vs rural 5G deployments

Rural base stations typically rely on macro cells with extended range capabilities. These larger towers can cover broader areas with fewer installations, making them more cost-effective for ...

What is a 5G Base Station?

A 5G base station is a critical component in a mobile network that connects devices, such as smartphones and IoT (Internet of Things) gadgets, ...



[What is 5G Network Architecture? Verizon](#)

What is 5G architecture? 5G network architecture includes both the physical construction of the 5G-specific hardware and infrastructure as well as the engineering design that determines ...



What is a 5G base station?

A 5G Base Station, also Known as A GNB (Next-Generation NodeB), is a fundamental component of the fifth-generation (5G) Wireless ...

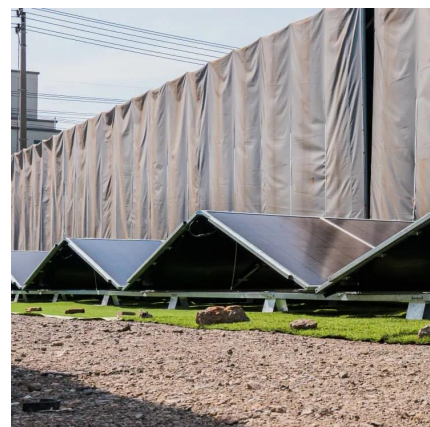


Base Station Transmits: 5G

The goal of Base Station Transmits is to discuss challenges faced by engineers and technicians who must optimize today's wireless networks. ...

What Will 5G Do for Rural Areas?

The 5G NR standard defines various base station types to cater to different deployment scenarios, user density, and coverage requirements. Here's a technical ...





[A guide to 5G small cells and macrocells](#)

A 5G femtocell, also called a home base station, is around the size of a paperback book and commonly used inside homes and offices. There are no line-of-site restrictions with a ...

Contact Us

For catalog requests, pricing, or partnerships, please visit:
<https://www.talbert.co.za>