

What is Base Station Communications





Overview

In communications, a base station is a communications station installed at a fixed location and used to communicate as part of one of the following:

- a system, or;
- a system such as or .

Base stations are critical components in wireless communication networks, serving as the intermediary between mobile devices and the core network. They play a vital role in ensuring seamless connectivity, efficient data transmission, and reliable communication services. What is a base station in a telecommunications network?

A base station is a critical component in a telecommunications network. A fixed transceiver that acts as the central communication hub for one or more wireless mobile client devices. In the context of cellular networks, it facilitates wireless communication between mobile devices and the core network.

What is the role of a base station in wireless communication?

Base stations are critical components in wireless communication networks, serving as the intermediary between mobile devices and the core network. They play a vital role in ensuring seamless connectivity, efficient data transmission, and reliable communication services.

Why are base stations important?

Base stations are the backbone of modern telecommunications networks, providing the essential infrastructure for wireless communication. They enable mobile devices to connect to the network, manage traffic efficiently, and ensure robust and reliable connectivity across wide areas.

How does a base station work?

It usually connects the device to other networks or devices through a dedicated high bandwidth wire of fiber optic connection. Base stations typically have a transceiver, capable of sending and receiving wireless signals; Otherwise if they only send the trailer it will be considered a transmitter or broadcast point only.



Why are base stations important in cellular communication?

Base stations are important in the cellular communication as it facilitate seamless communication between mobile devices and the network communication. The demand for efficient data transmission are increased as we are advancing towards new technologies such as 5G and other data intensive applications.

Are base stations a transmitter or broadcast point?

Since they can receive and send wireless signals, base stations are typically trans receivers, if they could just send out wireless signals, they would be referred to as transmitters or broadcast points. To accommodate the growing demand, the number of base stations is expected to keep growing.



What is Base Station Communications

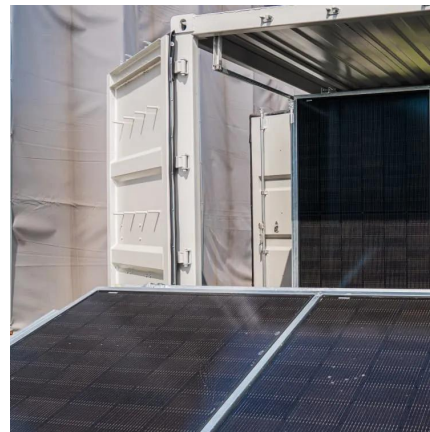


What Is the Role of a Base Station in Wireless Communication?

Base stations are critical components in wireless communication networks, serving as the intermediary between mobile devices and the core network. They play a vital role in ...

Base station

In the area of wireless computer networking, a base station is a radio receiver/transmitter that serves as the hub of the local wireless network, and may also be the gateway between a wired ...



The Base Station in Wireless Communications: The ...

In the early 1980s, the first analog networks, such as NMT and AMPS, made it possible to make phone calls while on the move. In the 1990s, ...

BS (Base Station)

Base stations are a critical component of modern wireless communication networks, providing the interface between wireless devices ...



What Is A Base Station?

A base station is an integral component of wireless communication networks, serving as a central point that manages the transmission and reception of signals between ...



BS (Base Station)

Base stations are a critical component of modern wireless communication networks, providing the interface between wireless devices and the network infrastructure.



Base transceiver station

A base transceiver station (BTS) or a baseband unit[1] (BBU) is a piece of equipment that facilitates wireless communication between user equipment (UE) and a network.





Base Stations

Base stations form a key part of modern wireless communication networks because they offer some crucial advantages, such as wide coverage, continuous communications and ...



How do repeater systems work? , Tait Radio Academy

As previously discussed, repeaters help with the problem of line of sight in conventional communications. If two radios want to communicate with a hilltop in the way, then there is no ...

What is the function of the Base Transceiver Station ...

The Base Transceiver Station (BTS) is a critical component of the cellular network architecture, particularly in the GSM (Global System for ...



Understanding the Base Station Subsystem: A Comprehensive ...

In the world of mobile telecommunications, understanding the Base Station Subsystem (BSS) is paramount for grasping how our everyday communications function ...



How do communication base stations work

Communication base stations, also known as cell towers or mobile phone masts, are essential components of wireless communication networks. They allow mobile devices to connect with ...



What is a Base Station in Telecommunications?

Base stations are the backbone of modern telecommunications networks, providing the essential infrastructure for wireless communication. They enable ...

Base station

OverviewWireless communicationsLand surveyingComputer networkingSee also

In radio communications, a base station is a wireless communications station installed at a fixed location and used to communicate as part of one of the following: o a push-to-talk two-way radio system, or;o a wireless telephone system such as cellular CDMA or GSM cell site.





What is a base station and how are 4G/5G base ...

A base station is referred to a stationary trans-receiver used in telecommunications that serves as the primary hub for connectivity of wireless ...

The Base Station in Wireless Communications: The Key to ...

In the early 1980s, the first analog networks, such as NMT and AMPS, made it possible to make phone calls while on the move. In the 1990s, GSM technology was ...



4 types of Base stations

Macro cell, Micro cell, Pico cell and Femto cell are 4 types of base stations in wireless communication networks.

What is a 5G base station?

A 5G Base Station, also Known as A GNB (Next-Generation NodeB), is a fundamental component of the fifth-generation (5G) Wireless ...



What is a Base Station in Telecommunications?

Base stations are the backbone of modern telecommunications networks, providing the essential infrastructure for wireless communication. They enable mobile devices to connect to the ...



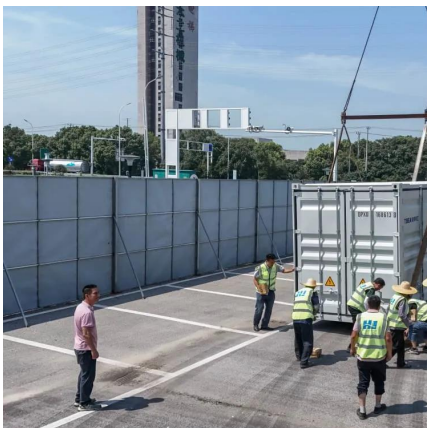
What is a Base Station?

5 days ago · A base station can refer to any of the following: 1. In the computer networking realm, a base station is the central hub for wireless network ...



Mobile base station

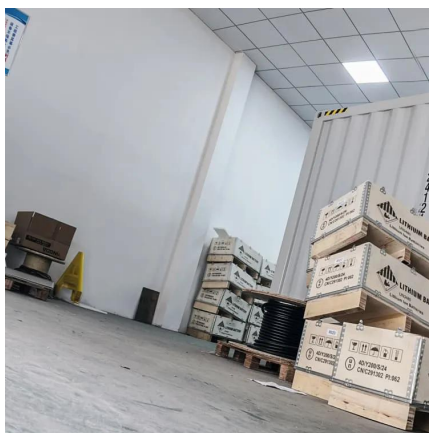
A mobile base station, also called a base transceiver station (BTS), is a fixed radio transceiver in any mobile communication network or wide area network (WAN). The base station connects ...





What is the difference between Base Station and ...

The performance of base stations directly affects the service quality of mobile communication networks, including call quality, data transmission rate, ...



What is a base station?

In telecommunications, a base station is a fixed transceiver that is the main communication point for one or more wireless mobile client devices. A base station serves as ...

Glossary: Base station (in communications)

[A mobile phone base station is] a transmission and reception station in a fixed location, consisting of one or more receive/transmit antenna, microwave dish, and electronic circuitry, ...



Base Station

Base Station What is Base Station? A base station is a device that serves as the hub of a wireless communication system. It is typically responsible for transmitting and receiving signals to and ...



Base Stations

Base stations form a key part of modern wireless communication networks because they offer some crucial advantages, such as wide ...



Breaking Down Base Stations - A Guide to Cellular Sites

Every day, billions of people use their phones and devices to connect to each other around the globe. This is made possible by cellular ...

Timing & Synchronization technology adopted base station for

About mobile Base Station GPS As mobile phones advanced from a 1st generation analog system in the 1980's to a 2nd generation digital system in the 1990's, they began to offer not only ...





The Architecture of Modern Ground Stations

The intricate network of components comprising modern ground stations is a testament to the precision and complexity required in satellite ...

What is a base station and how are 4G/5G base stations different?

A base station is referred to a stationary trans-receiver used in telecommunications that serves as the primary hub for connectivity of wireless device ...



Contact Us

For catalog requests, pricing, or partnerships, please visit:
<https://www.talbert.co.za>