

What inverter to use with batteries





Overview

For new solar-plus-battery installs, a hybrid inverter delivers the cleanest, most efficient DC-coupled setup. If you already have panels, an AC-coupled battery with its own inverter lets you retrofit without replacing your existing solar inverter. How to choose an inverter that has a battery?

Choosing a good inverter that has a battery for your home is a crucial process. To ensure that your battery of the inverter performs optimally and reliably, you need to consider multiple factors. • Power Needs: Calculate the total wattage of the appliance that you want to be operated on blackout.

What does an inverter do for a battery?

An inverter converts DC (Direct Current) power from your battery into AC (Alternating Current) power, which is used by most household appliances. What Does “100Ah Battery” Mean?

A 100Ah battery can, in theory, supply 100 amps for 1 hour, or 10 amps for 10 hours, and so on.

What are the different types of battery inverters?

Battery inverters come in various types, each tailored to specific applications and power requirements. Understanding the different types is crucial for choosing the right inverter for your needs: Off-Grid Inverters: These inverters are designed for off-grid systems, providing power independent of the utility grid.

What does a power inverter do?

What does a power inverter do, and what can I use one for?

A power inverter changes DC power from a battery into conventional AC power that you can use to operate all kinds of devices . electric lights, kitchen appliances, microwaves, power tools, TVs, radios, computers, to name just a few.



Why do you need an inverter with a battery backup?

Today, we can experience multiple power failures, which can severely affect our everyday activities. A dependable inverter accompanied with battery backup is all that one needs to stay safe in case of power outages, as it allows all the essential appliances and lights to run uninterrupted.

Can a 12V battery power an inverter?

Here are some general guidelines: A 12V 100Ah battery can reasonably power an inverter up to 1000W-1200W for short periods. For continuous loads, 500W-800W is more efficient and battery-friendly. 3. Inverter Efficiency and Battery Runtime No inverter is 100% efficient. Most are 85-95% efficient, which means some energy is lost as heat.



What inverter to use with batteries



What Size Inverter Do You Need for Your Home? , Renogy US

3. Renogy Inverter Charger Do you need a dependable backup power solution for homes with both grid-tied or off-grid solar systems? Renogy Inverter Charger will be your go-to partner. It ...

Best Inverter and Battery Options for Home Use

In this section, we present reviews of the top 5 inverters and batteries suitable for home use. Choosing the right inverter and battery can ...



The Ultimate Guide to Choose Batteries for Inverter

What type and size of battery is best for inverter? Lead acid, gel and lithium battery, what's the difference? Keep reading and choose the best ...



How to Determine What Size Inverter You Can Run Off a 100Ah Battery

Determining the appropriate size of an inverter



that can be run off a 100Ah battery involves understanding both the power output of the inverter and the energy capacity of the battery. A ...



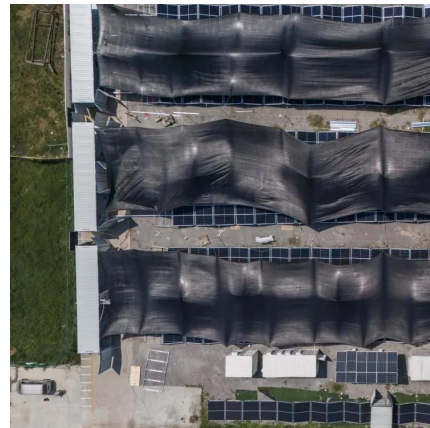
Top 10 Inverter and Battery for Home - With Reviews & Ratings

Discover the top 10 inverter and battery for home in India in 2025. Compare prices, reviews, and ratings, and find the perfect solution for uninterrupted power.



How to Calculate Battery Size for Inverters of Any Size

Learn how to calculate how much battery power you need to get your inverter up and running with The Inverter Store's handy how-to guide. It works for any size.



[Sizing the Right Inverter for 100ah Battery](#)

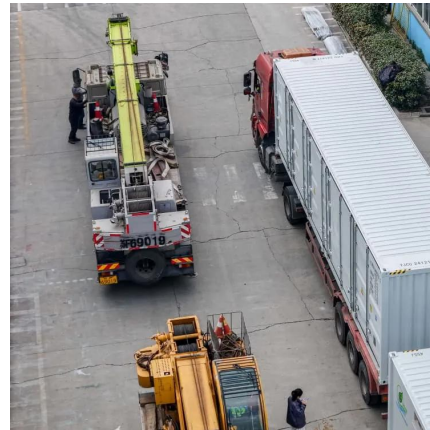
Step to calculate inverter size for 100ah battery: Calculate the total load you intend to use and add 20% for a safety margin. Select the inverter ...





What does a power inverter do, and what can I use one for?

A power inverter changes DC power from a battery into conventional AC power that you can use to operate all kinds of devices electric lights, kitchen appliances, microwaves, power tools, ...



[How to Hook Up a Power Inverter to a 12V Battery](#)

This video will explain what a power inverter is and how to hook it up to a 12V car battery.

10kW Hybrid Inverter: Complete Guide for Off-Grid and on-Grid ...

3 days ago · Discover how a 10kW hybrid inverter combines solar and battery power, supports off-grid/on-grid setups, and maximizes energy efficiency.



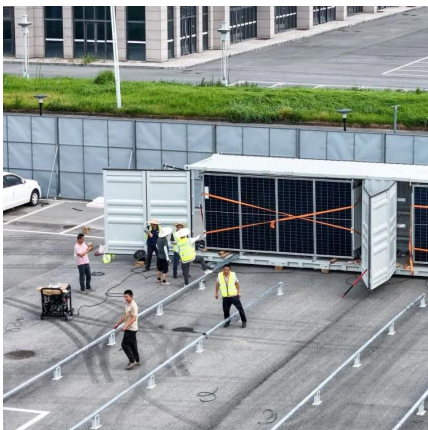
[What Inverter Size is Best for a 100Ah Battery?](#)

Use a pure sine wave inverter if you're running sensitive electronics. Consider future load expansion - if you'll add more appliances, scale accordingly. Fuse and cable sizing are ...



How Inverters Work with Batteries: A Beginner's ...

Understanding how inverters work with batteries is vital for anyone interested in renewable energy systems or backup power solutions. With this ...



What Is an Inverter Battery and How Does It Work?

Inverter batteries are typically wet-cell batteries, which use a liquid electrolyte (sulfuric acid diluted with distilled water). This type of battery is widely preferred for its cost-effectiveness and ...

Best Inverter and Battery Options for Home Use

In this section, we present reviews of the top 5 inverters and batteries suitable for home use. Choosing the right inverter and battery can greatly enhance energy efficiency and ...





Are Hybrid Solar Inverters Compatible With All Battery Types?

Which batteries work with hybrid solar inverters? Learn simple rules on lithium, lead-acid, DIY packs, and why matching BMS to BMS keeps your power safe.

[Can I Use a Marine Battery for an Inverter?](#)

Wondering if you can use a marine battery for an inverter? Discover the benefits and limitations to make an informed decision today.



The Ultimate Guide to Buy the Best Inverter with Battery for Home

Explore how to choose the top inverter with a battery for home applications. Get to know expert advice and suggestions that will ensure no mistakes are made and the best ...

What is a Battery Inverter? A Comprehensive Overview

This comprehensive guide will delve into the battery inverters, exploring their inner workings, diverse applications, and key considerations for ...



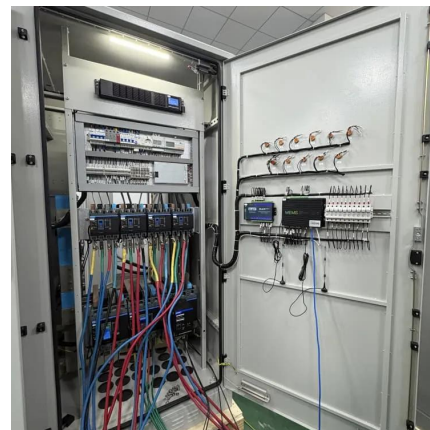
[What Inverter Do You Need for a Solar Battery?](#)

Find out which inverter works best with your solar battery system. Simplified advice for the right match, performance, and setup.



[Solar, battery and hybrid inverters explained](#)

Hybrid inverters, sometimes called battery-ready inverters, combine a solar and battery inverter in one simple unit. These inverters are becoming more competitive against ...



Choosing the Right Inverter for Battery Backup Systems

Selecting an inverter for battery backup systems doesn't have to be confusing. This guide simplifies the process with practical tips.





How Inverters Work with Batteries: A Beginner's Complete Guide ...

Understanding how inverters work with batteries is vital for anyone interested in renewable energy systems or backup power solutions. With this foundational knowledge, you ...



What is a Battery Inverter? A Comprehensive Overview

This comprehensive guide will delve into the battery inverters, exploring their inner workings, diverse applications, and key considerations for choosing the right one for your ...

[Frequently Asked Questions about Inverters](#)

Frequently Asked Questions about Inverters How much battery capacity do I need with an inverter? As a rule of thumb, the minimum required battery capacity for a 12-volt system is ...



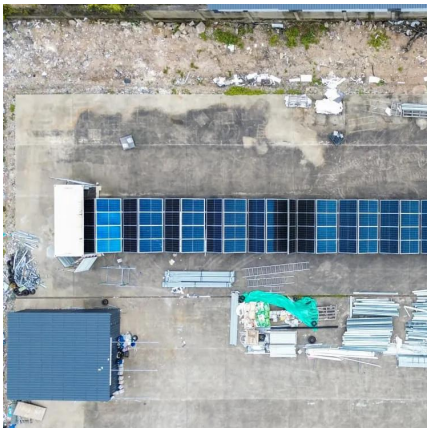
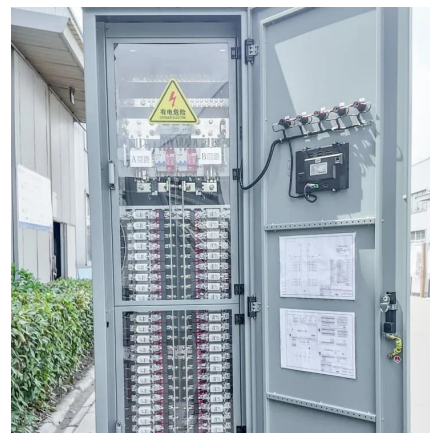
The Ultimate Guide to Buy the Best Inverter with ...

Explore how to choose the top inverter with a battery for home applications. Get to know expert advice and suggestions that will ensure no ...



Do LiFePO4 batteries need a specific kind of inverter?

I'm a total newbie at this, but I'm trying to decide on a 1000W pure sine wave inverter to pair with my LiFePO4 battery for my basic solar system for a van. I found a 1000W ...



What Size Inverter Can I Run Off a 100Ah Battery? A ...

When selecting an inverter to pair with a 100Ah battery, it's crucial to understand the power requirements of your appliances and the capabilities of your inverter. The right ...

Can I Use a 24V Inverter on a 12V Battery?

Inverter and battery voltages have to match for best results. But there are ways to use a 12V battery with a 24V inverter.





Contact Us

For catalog requests, pricing, or partnerships, please visit:
<https://www.talbert.co.za>