

# What inverter should I use for 48v 16ah





## Overview

---

Note!The battery size will be based on running your inverter at its full capacity  
Assumptions 1. Modified sine wave inverter efficiency: 85% 2. Pure sine wave inverter efficiency:90% 3. Lithium Battery:100%.

Do I need a 12V or 48V inverter?

Simply put, if you have a 12V system, you need a 12V inverter; a 48V system requires a 48V inverter. Standard Pure Sine Wave inverters simply change DC power to AC power. Inverter Chargers handle this function plus allow you to charge your batteries off shore power or a generator. Renogy's 3500W Solar Inverter Charger is designed for a 48V system.

Can a 48 volt solar panel be used with a 12V inverter?

Nowadays, big houses, especially off-grid, tend to use 48 volt solar panels. Keep in mind that your inverter has to be compatible with the voltage of this system to be used. A 48V solar panel can be used with a 12V system if you choose the right equipment for it — a controller and an inverter.

What voltage should a 12V inverter run on?

The input voltage of the inverter should match the battery voltage. (For example 12v battery for 12v inverter, 24v battery for 24v inverter and 48v battery for 48v inverter  
Summary What Will An Inverter Run & For How Long?

.

What are the different solar inverter sizes?

Solar generators range in size from small generators for short camping trips to large off-grid power systems for a boat or house. Consequently, inverter sizes vary greatly. During our research, we discovered that most inverters range in size from 300 watts up to over 3000 watts. In this article, we guide you through the different inverter sizes.

Do I need an inverter size chart?



The need for an inverter size chart first became apparent when researching our DIY solar generator build. Solar generators range in size from small generators for short camping trips to large off-grid power systems for a boat or house. Consequently, inverter sizes vary greatly.

Should I use a 24 volt or 48 volt inverter?

I suggest you use A 24-volt inverter or 36-volt inverter or 48-volt inverter when you need to power appliances over 3000 Watts. You may decide to use them even for appliances that are 2000Watts. When you use a 48-Volts inverter, you can use regular and more flexible connectors to connect the inverter to the battery bank.



## What inverter should I use for 48v 16ah

---

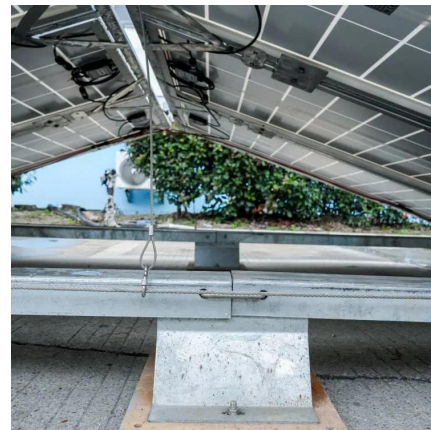


### [Should I upgrade to a 48 volt system? advantages?](#)

Well my inverter will only be 3,000 watts, so am I in between 24v and 48v? If you want to fully use the inverter, then I think 48 volts is better. I have am adding a 3000 watt ...

### **48V Solar Inverters: 2025 Buyer's Guide & Top Picks ?**

Discover the best 48V solar inverters for 2025! Compare prices, MPPT benefits, top brands like Cooli, and expert tips to maximize efficiency ...



### **Inverter Cable Size Calculator**

The Inverter Cable Size Calculator is a tool that helps you determine the appropriate cable size for your inverter system based on several factors, including the power of the inverter, voltage, ...

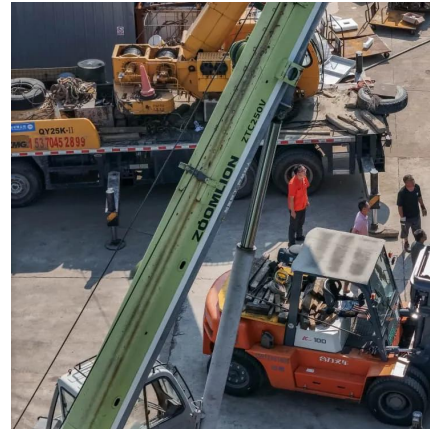
### **What Size Inverter Do I Need for a 200Ah Lithium Battery**

What are the effects of inverter voltage selection on overall system performance? Using a higher





voltage battery (24V or 48V) with a matching inverter reduces current draw for ...



## 48V Solar Power System Setup Guide: Using Hybrid ...

To know the right 48V solar power system and configure it, refer to this guide. The guide will explain a few aspects of off-grid solar installations ...



## [The Only Inverter Size Chart You'll Ever Need](#)

We have created a comprehensive inverter size chart to help you select the correct inverter to power your appliances.



## What Inverter Do I Need for a 48V Battery?

To safely and efficiently use a 48V lithium battery, choose a 48V-rated pure sine wave or hybrid inverter, sized to your daily load, and compatible with CAN or RS485 BMS communication.



## What Inverter Do I Need for a 48V Battery?

To safely and efficiently use a 48V lithium battery, choose a 48V-rated pure sine wave or hybrid inverter, sized to your daily load, and compatible with CAN or ...

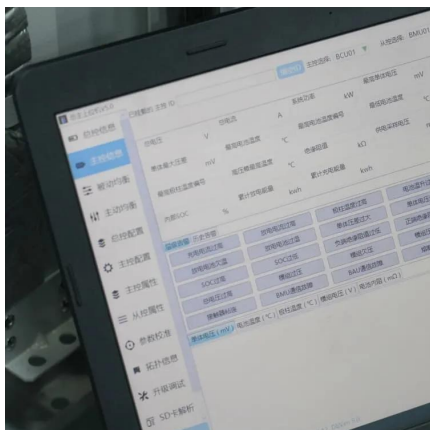
## **How Do You Calculate the Appropriate Inverter Size for a 48V ...**

In conclusion, calculating the appropriate inverter size for a 48V battery system involves determining total load, accounting for surge ratings, and selecting an inverter that ...



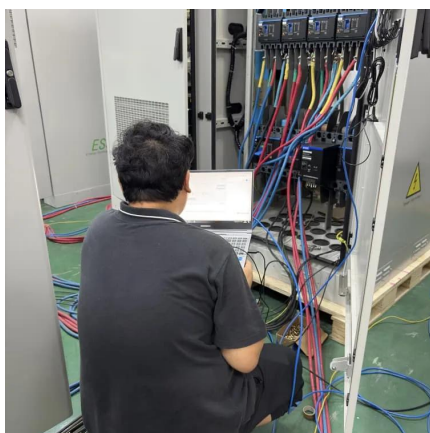
## **The Differences Between 24v and 48v Inverter: Which is Better?**

Are you confused about choosing between 24V and 48V inverters? Compare the key differences in efficiency, cost, and battery configuration.



## The Differences Between 24v and 48v Inverter: Which ...

Are you confused about choosing between 24V and 48V inverters? Compare the key differences in efficiency, cost, and battery configuration.



## 48V Solar Inverters: 2025 Buyer's Guide & Top Picks ?

Discover the best 48V solar inverters for 2025! Compare prices, MPPT benefits, top brands like Cooli, and expert tips to maximize efficiency and savings. ??

## How Do You Calculate the Appropriate Inverter Size for a 48V ...

To calculate the appropriate inverter size for a 48V battery system, you need to determine the total wattage of the devices you plan to power. The formula is: Inverter Size ...



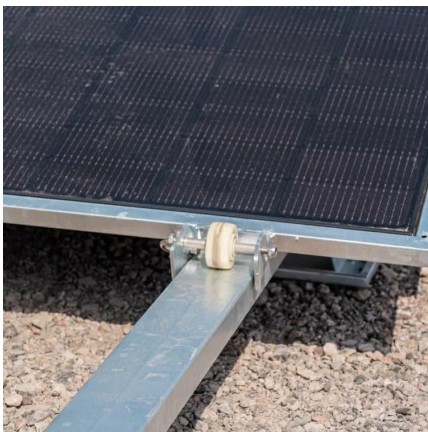


### 280Ah batterybank and 3000W inverter

3000W is the absolute max I will use continuously and only for a shorter time, the general draw will be much lower depending on what is used ...

### **Calculate Battery Size For Any Size Inverter (Using Our Calculator)**

Pairing a right size capacity battery for an inverter can be a bit confusing for most the beginners So I have made it easy for you, use the calculator below to calculate the battery ...



### **48V vs 24V Advice Needed**

As a general rule of thumb this is the scale I would use. 1-1000W use 12V 1000-2000W use 24V >2000W use 48V Alternatively, you may want to parallel multiple 24V ...

### **I got a hybrid inverter with an integrated mttp charger.**

I got a hybrid inverter with an integrated mttp charger. have lifepo4 48v. I'm wondering what L14/L15/L16 mean for lithium iron phosphate. what does it ...





## How Many Batteries can Be Connected To An Inverter?

An inverter is only as good as the power source. Discover how many batteries you can connect to an inverter and get the most out of it.



## [How Many Batteries Do I Need for a 5000W Inverter](#)

To power a 5000W inverter, you have to consider more than just the number of batteries. The battery capacity, the inverter voltage input and how long you need to use the inverter are ...



## How to Choose the Right Ah for 48V Li-ion Battery Pack?

Struggling to choose the right Ah for your 48V Li-ion battery pack? This in-depth guide covers everything you need to make the best choice. Find out more now!





## Identify the correct inverter

To charge overnight (10 hours), that is 6kW of charging. any 6000 watt inverter or higher should work. But, a chargeverter is cheaper, and can do it in 12 hours.



## Can A 48V Inverter Connect To A 24V Battery? Compatibility And ...

No, a 48V inverter cannot work with a 24V battery. It needs a 48V DC input to operate correctly. If you provide only 24V, the inverter may not start or will shut down often. To ...

## [How to size battery cable for 48v systems?](#)

At 48V you can use 4 times the wire length shown in the chart for the same voltage drop. Or put another way, take your wire length, divide by 4, ...



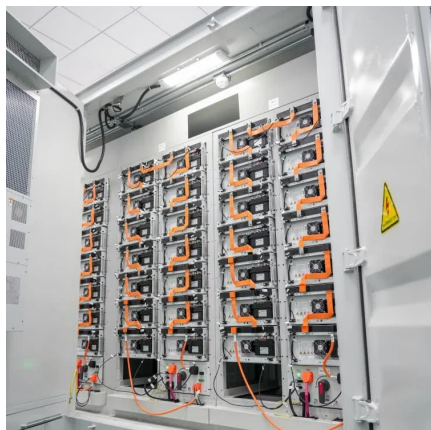
## 48V Inverter: The Ultimate Guide to Efficient and Scalable Power

Unlock efficient power solutions with a 48V inverter--perfect for solar, off-grid, and backup systems. Learn how to choose the best one for your needs now!



## 48V Solar Power System Setup Guide: Using Hybrid Inverters for ...

To know the right 48V solar power system and configure it, refer to this guide. The guide will explain a few aspects of off-grid solar installations such as inverter selection, battery ...



### Battery to Bus wire size

I have two LiFePo4 100 ah Batteries wired in parallel, using 2/0 cables. What size wire should I use to connect the batteries to the BUS bar? I will connect a 2000 watt inverter to ...

## Contact Us

For catalog requests, pricing, or partnerships, please visit:  
<https://www.talbert.co.za>