

What equipment is in the base station communication room





Overview

In the area of wireless computer networking, a base station is a radio receiver/transmitter that serves as the hub of the local wireless network, and may also be the gateway between a wired network and the wireless network. It typically consists of a low-power transmitter and .

The guide then describes basic equipment needed in a base station: a transceiver (transmitter and receiver), a control device, microphone and speaker, a transmission line, and an antenna. What is a base station in a wireless network?

In the area of wireless computer networking, a base station is a radio receiver/transmitter that serves as the hub of the local wireless network, and may also be the gateway between a wired network and the wireless network. It typically consists of a low-power transmitter and wireless router.

What is a base station in radio communications?

In radio communications, a base station is a wireless communications station installed at a fixed location and used to communicate as part of one of the following: a wireless telephone system such as cellular CDMA or GSM cell site. Base stations use RF power amplifiers (radio-frequency power amplifiers) to transmit and receive signals.

How does a base station communicate with a client device?

Generally, if client devices wanted to communicate to each other, they would communicate both directly with the base station and do so by routing all traffic through it for transmission to another device. Base stations in cellular telephone networks are more commonly referred to as cell towers.

What are the parts of a base station?

BBU, RRU and Antenna Feeder are the core parts of the base station. Through the coordinated work of each part, the functions such as sending text messages and Internet communication are completed. Each base station is connected into a mesh to achieve seamless coverage of communication services. Repeater Repeater looks like RRU.



How does a base station work?

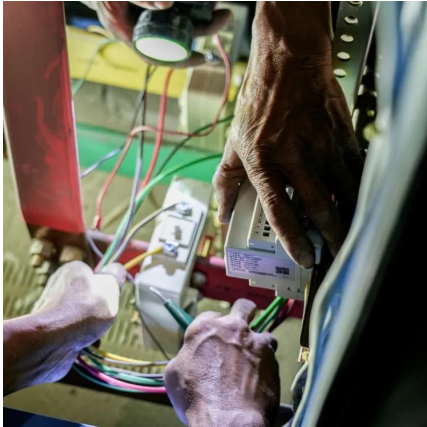
It usually connects the device to other networks or devices through a dedicated high bandwidth wire or fiber optic connection. Base stations typically have a transceiver, capable of sending and receiving wireless signals; Otherwise if they only send the trailer it will be considered a transmitter or broadcast point only.

What are the different types of base stations?

Some basic types of base stations are as follows: Macro-base stations are tall towers ranging from 50 to 200 feet in height, placed at strategic locations to provide maximum coverage in a given area. Those are equipped with large towers and antennas that transmit and receive radio signals from wireless devices.



What equipment is in the base station communication room



5G Communication Base Stations Participating in Demand ...

The literature [10] sorts out the key technologies necessary for 5G base stations to participate in demand response, foresees the application scenarios for 5G base stations to ...

Base station

In the area of wireless computer networking, a base station is a radio receiver/transmitter that serves as the hub of the local wireless network, and may also be the gateway between a wired ...



Base Transceiver Station: Core Functionality Explained

Discover what a Base Transceiver Station is and how it's pivotal in mobile communication networks. Unlock the essentials of BTS functionality here.

Australasian Health Facility Guidelines a Communication ...

Australasian Health Facility Guidelines RDS
Templates Room Name Communications Room



What is Telecommunication Base Station , China Hop

Generally speaking, a base station consists of three antennas, each transmitting signals in a 120 degree direction towards the surrounding area, which together ...

Base station

OverviewComputer networkingLand surveyingWireless communicationsSee also

In the area of wireless computer networking, a base station is a radio receiver/transmitter that serves as the hub of the local wireless network, and may also be the gateway between a wired network and the wireless network. It typically consists of a low-power transmitter and wireless router.



What is a base station?

A base station will have one or more radio frequency (RF) antennas to transmit and receive RF signals to other devices. Base stations are also central points that all clients ...



5g base station architecture

5G (fifth generation) base station architecture is designed to provide high-speed, low-latency, and massive connectivity to a wide range of devices. The architecture is more ...



Optimal configuration of 5G base station energy storage ...

The high-energy consumption and high construction density of 5G base stations have greatly increased the demand for backup energy storage batteries. To maximize overall ...

Base Transceiver Stations (BTS)

A Base Transceiver Station, commonly known as BTS, is a critical piece of equipment in wireless communication networks. It serves as the primary point of contact between user devices, such ...





What is Telecommunication Base Station , China Hop

Generally speaking, a base station consists of three antennas, each transmitting signals in a 120 degree direction towards the surrounding area, which together provide seamless coverage of ...

What is RRU and BBU

The BBU centralizes the "baseband," "transmission," "main control," "clock," and other functions of the base station. On the other hand, ...

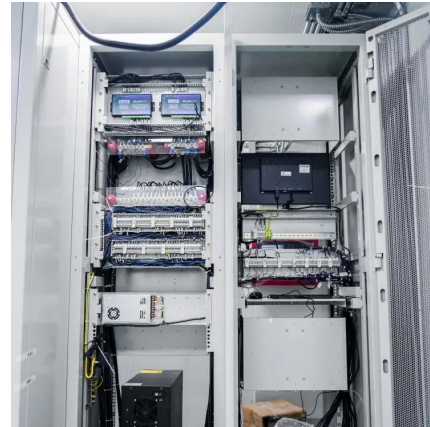


What is a Base Station?

A base station is a common term used in telecommunications for a radio receiver with one or more antennae. While the base station has many ...

[How does a TETRA base station work? - Wray Castle](#)

At the heart of a TETRA network is the base station, which serves as the central hub for communication between mobile radios and the network infrastructure. The base station ...



Base Station System Structure

2 Base Station Background The intent of this section is to explore the role of base stations in communications systems, and to develop a reference model that can be used to describe and ...



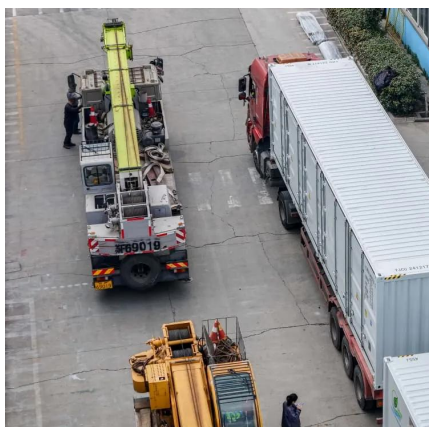
BS (Base Station)

A base station (BS) is a key component of modern wireless communication networks, providing the interface between wireless devices ...



Guide to Base Station Communications Equipment , Office of ...

The guide then describes basic equipment needed in a base station: a transceiver (transmitter and receiver), a control device, microphone and speaker, a transmission line, and an antenna.





The Base Station in Wireless Communications: The Key to ...

Equipped with an electromagnetic wave antenna, often placed on a tall mast, the base station enables communication between mobile terminals (such as mobile phones or ...



Introduction of base station and Remote Radio Unit

The function of the Communication Equipment Room is to provide protection, power supply and air conditioning cooling for the internal core equipment, that is, the ...

Base Stations

The present-day tele-space is incomplete without the base stations as these constitute an important part of the modern-day scheme of wireless communications. They are ...



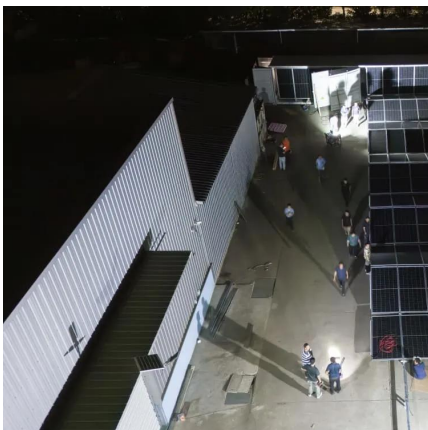
Base station

In radio communications, a base station is a wireless communications station installed at a fixed location and used to communicate as part of one of the ...



Micro-environment strategy for efficient cooling in ...

The cooling systems of telecommunication base stations (TBSs) primarily rely on room-level air conditioners. However, these systems often lead to problems such as messy ...

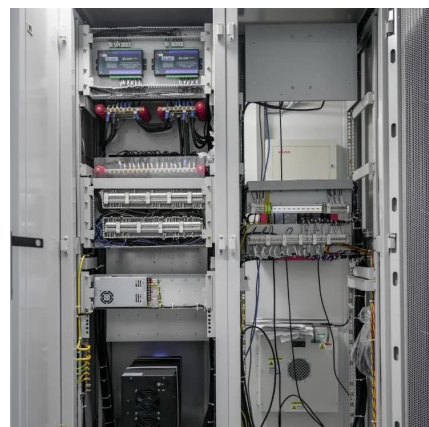


What is a base station?

A base station will have one or more radio frequency (RF) antennas to transmit and receive RF signals to other devices. Base stations are also ...

Guide for the Selection of Communication Equipment for ...

A communication system is made up of devices that employ one of two communication methods (wireless or wired), different types of equipment (portable radios, mobile radios, base/fixed ...





What is a base station and how are 4G/5G base ...

Base station is a stationary trans-receiver that serves as the primary hub for connectivity of wireless device communication.

What is RRU and BBU

The BBU centralizes the "baseband," "transmission," "main control," "clock," and other functions of the base station. On the other hand, the RRU focuses on the radio ...



The Base Station in Wireless Communications: The ...

Equipped with an electromagnetic wave antenna, often placed on a tall mast, the base station enables communication between mobile terminals ...

Base Stations

The present-day tele-space is incomplete without the base stations as these constitute an important part of the modern-day scheme of wireless ...



9.5.2 Communication System

The base station equipment such as radio transceivers, digital telephone channel banks, and switches of each subsystem are located in a Seismic Category Criteria I structure in separate ...

What is Base Station?

Nowadays, networking has become a crucial part of our daily lives. To implement network services for users, base station plays an essential role to constitute a ...



Contact Us

For catalog requests, pricing, or partnerships, please visit:
<https://www.talbert.co.za>