

What electricity does the Luxembourg power station use





Overview

By 2021, renewable energy produced 80% of electricity generated in Luxembourg, comprising wind power at 26%, solar power at 17%, hydro power at 8%, and other renewables (bioenergy, etc) at 29%. Luxembourg firms are less likely than those throughout the EU to invest in onsite/offsite renewable energy generation (26% versus 41%) and energy efficiency (43% against 59%). Energ. SummaryEnergy in Luxembourg describes and production, consumption and import in . Primary.

There was no decline in the climate change gas emissions (CO₂) from year 2008 to 2012 in Luxembourg. There was no better efficiency in the use of electricity from 2008 to 2012.

In 2008, electricity use per person in Luxembourg was 2.6 times greater than in the United Kingdom. The led to briefly consider constructing a nuclear power plant.

Emissions of in total, per capita in 2007 were 22.4 tons CO₂ compared to EU 27 average 7.9 tons CO₂. 1990 emissions were 13 Mt CO₂eq target is reduction of 4 Mt (28%). In Luxemb.

Where does Luxembourg's electricity come from?

80% of Luxembourg's electricity generation is from renewable sources. 26% of the total comes from wind, 17% from solar, 8% from hydropower, and 29% from 'other renewables' such as bioenergy (plant matter or animal waste). In contrast, the main source of electricity production in France is nuclear power, accounting for 69% of the total.

Does Luxembourg use nuclear power?

Given the coal-heavy mix in Germany, it's not surprising that Luxembourg's consumption mix includes some energy produced from coal. The remaining 42% of imported energy comes from France and Belgium: about an even split between them. This means that Luxembourg's electricity mix does include some energy generated by nuclear power in these countries.

What is energy in Luxembourg?



Energy in Luxembourg describes energy and electricity production, consumption and import in Luxembourg. Electricity sector in Luxembourg is the main article of electricity in Luxembourg. Primary energy use in Luxembourg was 48 TWh in 2009, or 98 TWh per million inhabitants.

How much electricity does Luxembourg use?

Electricity sector in Luxembourg is the main article of electricity in Luxembourg. Primary energy use in Luxembourg was 48 TWh in 2009, or 98 TWh per million inhabitants. Luxembourg is a net energy importer; 81.5% of the electricity consumed in the country, for example, was imported from neighboring European countries in 2021.

How many power plants are in Luxembourg?

Luxembourg has 2 utility-scale power plants in operation, with a total capacity of 1681.0 MW. This data is a derivative set of data gathered by source mentioned below. Global Energy Observatory/Google/KTH Royal Institute of Technology in Stockholm/Enipedia/World Resources Institute/database.earth.

Does Luxembourg control the energy mix from abroad?

While Luxembourg can directly control the energy mix of electricity produced within its territory, it has little influence over the energy mix from abroad. 81.5% of Luxembourg's electricity comes from abroad. The main country it imports from is Germany (58%).



What electricity does the Luxembourg power station use



HOW MUCH ELECTRICITY DOES LUXEMBOURG USE?

How much electricity does 10kw solar energy generate in one hour The first factor in calculating solar panel output is the power rating. There are mainly 3 different classes of solar panels: 1. ...

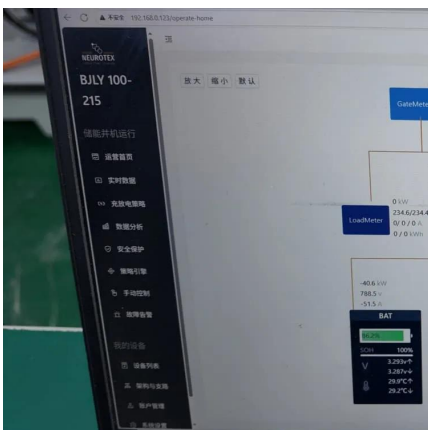
Power Plugs and Outlets in Luxembourg: Do I Need a ...

Are you traveling to Luxembourg? Find out what power plugs and outlets are being used in Luxembourg. Also, see if you need a travel adapter.



Luxembourg Electricity Generation Mix 2024/2025

Luxembourg's electricity mix includes 9% Wind, 9% Solar and 7% Biofuels. Low-carbon generation peaked in 2010.



Luxembourg: Energy Country Profile

Luxembourg: What sources does the country get its electricity from? Where do countries get their



electricity from - coal, oil, gas, nuclear energy or renewables?



Energy industry in Luxembourg

According to the U.S. Energy Information Administration, the share of hydropower in electricity production in Luxembourg in 2023 was 7.9%, which is represented by both ...

Energy in Luxembourg

By 2021, renewable energy produced 80% of electricity generated in Luxembourg, comprising wind power at 26%, solar power at 17%, hydro power at 8%, and other renewables (bioenergy, ...



Luxembourg

The power sockets in Luxembourg are of type F. The standard voltage is 230 V at a frequency of 50 Hz. Check your need for a power plug (travel) adapter in Luxembourg.



[Luxembourg Electricity Generation Mix 2024/2025](#)

Luxembourg's electricity mix includes 9% Wind, 9% Solar and 7% Biofuels. Low-carbon generation peaked in 2010.



[Power Plant Basics: Types, Components, and How ...](#)

The turbine rotates the generator and creates electricity. The generated electricity in the power station is then sent to the power grid for use ...

[Sub \\$0.25/kwh costs , C& I Energy Storage System](#)

The Article about sub \$0.25/kwh costsLuxembourg City Energy Storage Power Station: Powering a Sustainable Future when you hear "Luxembourg City energy storage power station," your ...



The Ultimate Guide to Portable Power Stations: How ...

Their portable power stations are designed to be easy to carry and are equipped with a variety of outlets and ports, making it easy to power your electronic ...



Heating and Electricity Prices and Bills in Luxembourg ...

Heating and electricity in Luxembourg The cost of gas and electricity in Luxembourg constitutes one of the primary fixed expenses that ...



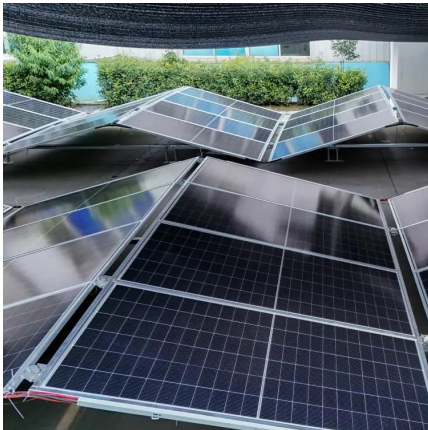
Luxembourg Electricity Statistics

Electricity generation and consumption, imports and exports, nuclear, renewable and non-renewable (fossil fuels) energy, hydroelectric, geothermal, wind, solar energy, etc. in ...

What does Luxembourg's electricity mix consist of?

According to the Luxembourg Regulatory Institute (ILR), the electricity mix sold by suppliers in Luxembourg is composed of 7% nuclear energy, 27% fossil energy, and 65% ...





What Is A Portable Power Station And How Does It Work?

3 days ago· A portable power station is a rechargeable battery-powered generator that stores electrical energy and makes it available through multiple output ports such as AC outlets, USB ...

[Electric mobility gathers speed in Luxembourg](#)

The automotive sector has seen its electromobility sales take off in recent years, with an increasing number of electric and hybrid vehicle registrations. ...



[Power Plants in Luxembourg \(Map\), database.earth](#)

Data and information about power plants in Luxembourg plotted on an interactive map.



Luxembourg

Electricity can be generated in two main ways: by harnessing the heat from burning fuels or nuclear reactions in the form of steam (thermal power) or by capturing the energy of natural ...



Where does Luxembourg's electricity come from?

80% of Luxembourg's electricity generation is from renewable sources. 26% of the total comes from wind, 17% from solar, 8% from hydropower, and 29% from 'other renewables' ...



New York State Energy Profile

New York Quick Facts New York law requires the state to generate 70% of its electricity from renewable resources by 2030. In 2023, New York ranked third among the ...



Luxembourg Energy Information

Luxembourg aims to increase the share of renewables in final energy consumption to 37% in 2030, including 40.3% for heating, 39.1% for electricity, and 27% for transport. In 2022, this ...



Electricity sector in Luxembourg

According to IEA, the electricity use (gross production + imports - exports - transmission/distribution losses) in Luxembourg in 2008 was 7.7 TWh and population 0.49 ...

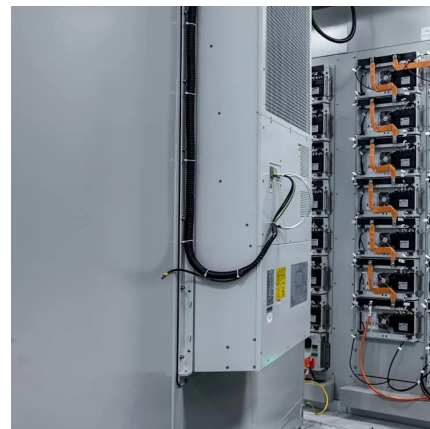


Understanding China's Power Stations: A Comprehensive Guide to Energy

This guide delves into the various types of power stations, their operational mechanisms, and the role they play in meeting the country's energy demands. Readers can ...

Where does Luxembourg's electricity come from?

80% of Luxembourg's electricity generation is from renewable sources. 26% of the total comes from wind, 17% from solar, 8% from ...



Power plant

A power plant is an industrial facility that generates electricity from primary energy. Most power plants use one or more generators that convert ...



Contact Us

For catalog requests, pricing, or partnerships, please visit:
<https://www.talbert.co.za>