

What does the communication network base station equipment include





Overview

In the area of wireless computer networking, a base station is a radio receiver/transmitter that serves as the hub of the local wireless network, and may also be the gateway between a wired network and the wireless network. It typically consists of a low-power transmitter and .

What is a base station in a telecommunications network?

A base station is a critical component in a telecommunications network. A fixed transceiver that acts as the central communication hub for one or more wireless mobile client devices. In the context of cellular networks, it facilitates wireless communication between mobile devices and the core network.

What does a base station do?

Base stations are responsible for transmitting and receiving data to and from wireless devices, as well as managing network resources and ensuring reliable and efficient communication. The basic function of a base station is to convert wireless signals into digital signals that can be transmitted over a wired network infrastructure.

How does a wireless device communicate with a base station?

When a wireless device, such as a mobile phone, communicates with a base station, the device sends a signal to the base station, which converts the signal into digital form and sends it to the network. Similarly, when the network sends data to the device, the base station converts the digital data into a wireless signal that the device can receive.

How does a base station communicate with a client device?

Generally, if client devices wanted to communicate to each other, they would communicate both directly with the base station and do so by routing all traffic through it for transmission to another device. Base stations in cellular telephone networks are more commonly referred to as cell towers.

What equipment does a base station need?



Control Equipment: Base stations include control equipment that manages the communication protocols and coordinates the interaction between mobile devices and the network. This equipment ensures that data is routed correctly and efficiently. **Power Supply:** A reliable power supply is essential for the continuous operation of a base station.

Why are base stations important for modern telecommunications?

In summary, base stations are critical for modern telecommunications as they serve as the link between mobile devices and the extensive network infrastructure that spans the globe. The strategic deployment and ongoing improvement of these stations are essential for maintaining global connectivity.



What does the communication network base station equipment incl

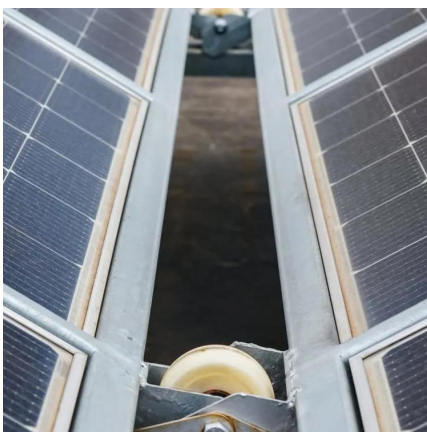


What is a base station?

Discover the role and functionality of a base station in telecommunications networks. Learn how these critical components manage communication ...

5G RAN Architecture: Nodes And Components

4. Base Station Base Station (BS) is a key component of the 5G Radio Access Network (RAN) architecture that serves as an access point for wireless connections between ...



Base station

OverviewComputer networkingLand surveyingWireless communicationsSee also

In the area of wireless computer networking, a base station is a radio receiver/transmitter that serves as the hub of the local wireless network, and may also be the gateway between a wired network and the wireless network. It typically consists of a low-power transmitter and wireless router.

5G Base Station

5G base station is the core equipment of 5G

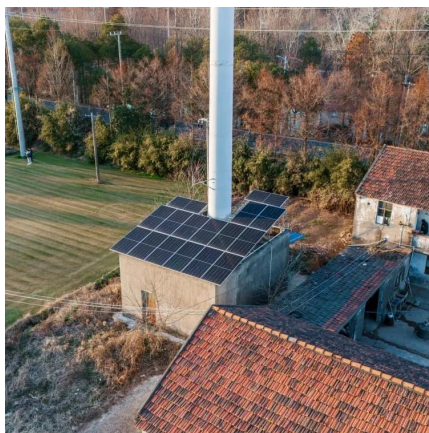


network, which provides wireless coverage and realizes wireless signal transmission between ...



Base Transceiver Station: Core Functionality Explained

Discover what a Base Transceiver Station is and how it's pivotal in mobile communication networks. Unlock the essentials of BTS functionality here.



Guide for the Selection of Communication Equipment for ...

A communication system is made up of devices that employ one of two communication methods (wireless or wired), different types of equipment (portable radios, mobile radios, base/fixed ...



[Understanding BTS \(Base Transceiver Station\) in ...](#)

Definition of BTS (Base Transceiver Station) A Base Transceiver Station (BTS) is the equipment that facilitates wireless communication between user devices and the network. It houses the ...





The Base Station in Wireless Communications: The ...

Equipped with an electromagnetic wave antenna, often placed on a tall mast, the base station enables communication between mobile terminals ...



What are the main components of a GSM network?

A GSM (Global System for Mobile Communications) network consists of various components that work together to provide mobile communication services. These components ...

What is Telecommunication Base Station , China Hop

What is telecommunication base station, let's learn about communication base stations. China telecom equipment supplier.



How do communication base stations work

Communication base stations, or cell towers, are vital for wireless networks. They consist of antennas, transceivers, controllers, and power supplies to transmit and receive signals.



Key Mobile Network Equipment and Functions

1. Base Transceiver Station (BTS) / Node B / eNodeB / gNodeB A Base Transceiver Station (BTS) is a critical piece of equipment in a mobile network, ...

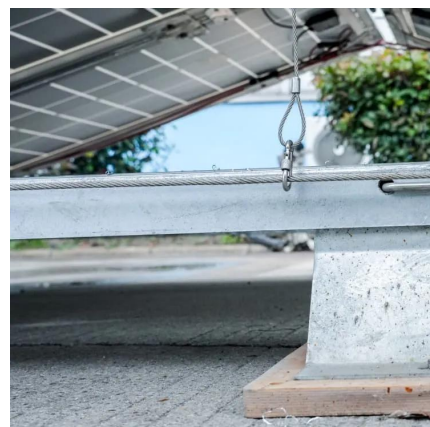


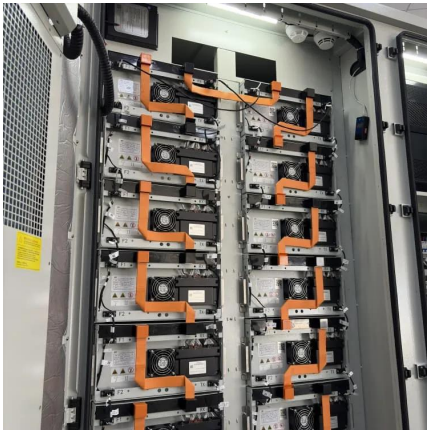
IoT Glossary: Base Station Controller Explained

A base station is company specific, but competing telecommunication companies can have their individual base stations on a physical site. In terms of wireless communication, ...

The Base Station in Wireless Communications: The Key to ...

Equipped with an electromagnetic wave antenna, often placed on a tall mast, the base station enables communication between mobile terminals (such as mobile phones or ...





Understanding the Base Station Subsystem: A Comprehensive ...

In the world of mobile telecommunications, understanding the Base Station Subsystem (BSS) is paramount for grasping how our everyday communications function ...

What is the Base Station Subsystem (BSS)?

In summary, the Base Station Subsystem (BSS) in GSM is a critical component responsible for managing radio communication between ...



BS (Base Station)

The hardware components of a base station include antennas, radios, and processing units, while the software components include network management software and ...

Base Stations

The present-day tele-space is incomplete without the base stations as these constitute an important part of the modern-day scheme of wireless communications. They are ...



Base station

In the area of wireless computer networking, a base station is a radio receiver/transmitter that serves as the hub of the local wireless network, and may also be the gateway between a wired ...



Understanding the Basics: What is a Base ...

In today's digitally connected world, understanding the technology that makes communication possible is more important than ever. One key ...



Understanding Wireless Base Stations: Definition and ...

A wireless base station is an important component of cellular networks. It serves as a hub that connects mobile devices to the broader ...





Base Station Equipment - SolveForce Cloud Computing

Base station equipment, also known as cell site equipment, is a crucial component of cellular networks and wireless communication systems. It plays a central role in facilitating wireless ...

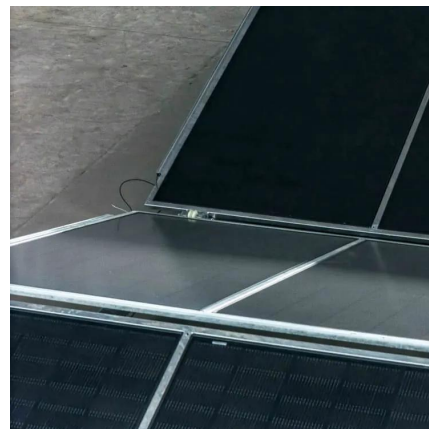


Base Station's Role in Wireless Communication Networks

Base stations come in various types, including macro, micro, pico, and femto cells. Macro base stations cover large areas and support many users, commonly found in urban and rural ...

What Is the Role of a Base Station in Wireless Communication?

Base stations are critical components in wireless communication networks, serving as the intermediary between mobile devices and the core network. They play a vital role in ...



What Is A Base Station?

A base station is a piece of equipment that facilitates wireless communication between devices and a network. It contains the necessary hardware and software to transmit ...



What is a base station?

A base station will have one or more radio frequency (RF) antennas to transmit and receive RF signals to other devices. Base stations are also central points that all clients ...

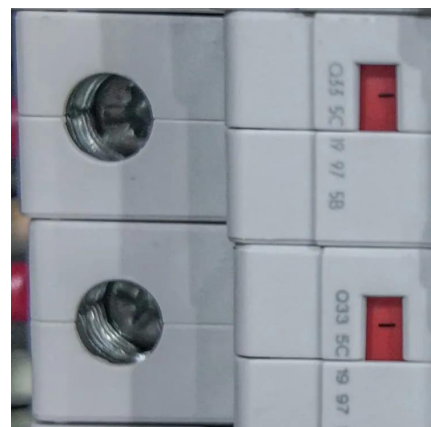


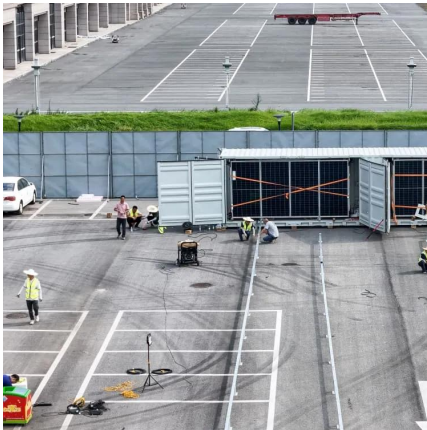
What is a base station?

Discover the role and functionality of a base station in telecommunications networks. Learn how these critical components manage communication between mobile devices and the network, ...

Base Stations

The present-day tele-space is incomplete without the base stations as these constitute an important part of the modern-day scheme of wireless ...





BS (Base Station)

The hardware components of a base station include antennas, radios, and processing units, while the software components include network ...

Contact Us

For catalog requests, pricing, or partnerships, please visit:
<https://www.talbert.co.za>