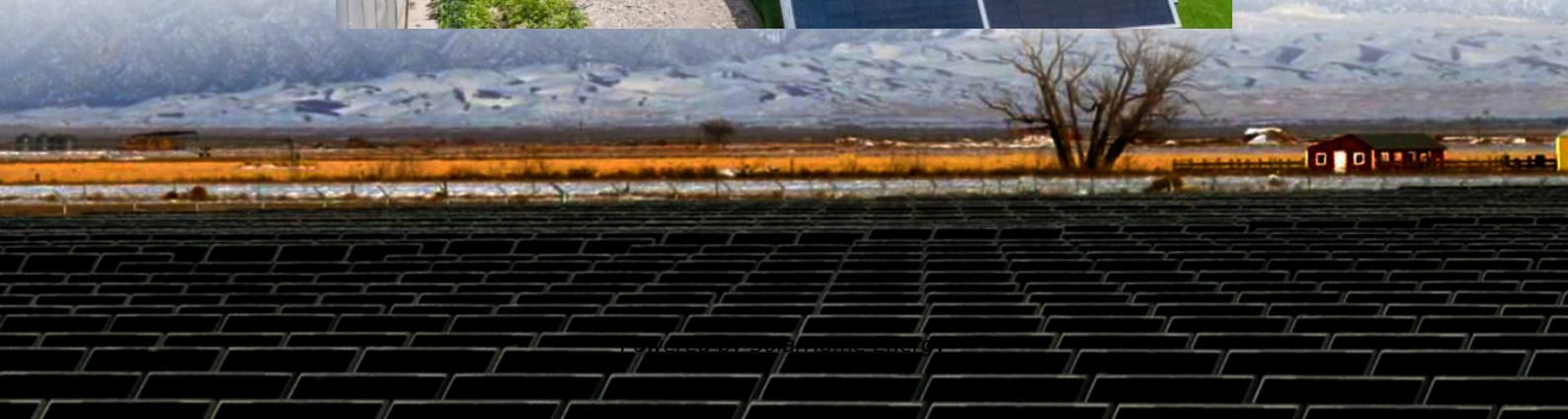


What does the communication base station battery communication equipment include





Overview

What makes a telecom battery pack compatible with a base station?

Compatibility and Installation Voltage Compatibility: 48V is the standard voltage for telecom base stations, so the battery pack's output voltage must align with base station equipment requirements. Modular Design: A modular structure simplifies installation, maintenance, and scalability.

What is a communication base station?

Communication base station setups will usually include a wide array of different technologies, including power supplies, data servers, head end, radio repeaters, and communication systems that allow for high-speed continuous information flow. It can also be used as part of a leaky feeder system in the communication network.

Which battery is best for telecom base station backup power?

Among various battery technologies, Lithium Iron Phosphate (LiFePO₄) batteries stand out as the ideal choice for telecom base station backup power due to their high safety, long lifespan, and excellent thermal stability.

Why do telecom systems need batteries?

Telecom systems play a crucial role in keeping our world connected. From mobile phones to internet service providers, these networks need reliable power sources to function smoothly. That's where batteries come into play. They ensure that communication lines remain open, even during outages or emergencies. But not all batteries are created equal.

Are lithium-ion batteries a good choice for a telecom system?

Lithium-ion batteries have rapidly gained popularity in telecom systems. Their efficiency is unmatched, providing higher energy density compared to traditional options. This means they can store more power in a smaller footprint.



What type of battery does a telecom system need?

Beyond the commonly discussed battery types, telecom systems occasionally leverage other varieties to meet specific needs. One such option is the flow battery. These batteries excel in energy storage, making them ideal for larger installations that require consistent power over extended periods.



What does the communication base station battery communication



What Are the Critical Aspects of Telecom Base Station Backup ...

Telecom base station backup batteries are essential for ensuring uninterrupted communication by providing reliable, long-lasting power during outages. Critical aspects ...

Collaborative Optimization of Base Station Backup Battery ...

As the penetration rate of renewable energy in the power system grows, the need for the power system to find new flexible resources to maintain its stability increases. At the same time, ...



[19-Inch Lithium Battery Cabinets for 4G/5G - KDST](#)

In modern communication base stations, battery cabinets play a crucial role as the key equipment to ensure uninterrupted operation of communication networks. And lithium batteries, especially ...

Base stations and mobile networks

Base station Mobile network A mobile network is made up of many base stations that each provide coverage in its surrounding area.



Communication Base Station Backup Battery

Communication base station backup batteries are designed to provide a consistent and reliable power supply during electricity outages. This ensures uninterrupted communication services, ...



Communication Base Station Energy Solutions

During the day, the solar system powers the base station while storing excess energy in the battery. At night, the energy storage system discharges to ...



Optimizing the power supply design for

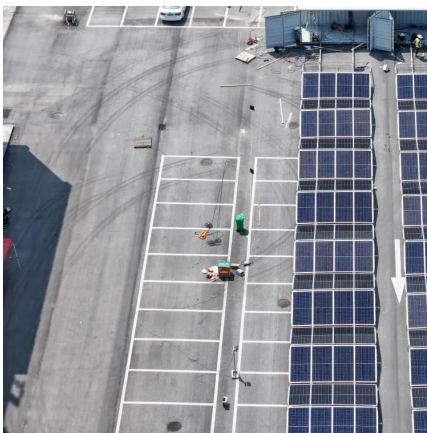
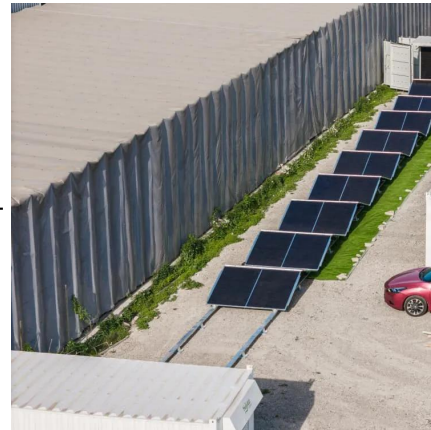
Communication base station power system design scheme When selecting a power system design scheme, it is necessary to consider a variety ...





Telecom Base Station Backup Power Solution: Design Guide for ...

Discover the 48V 100Ah LiFePO4 battery pack for telecom base stations: safe, long-lasting, and eco-friendly. Optimize reliability with our design guide.



What are the main applications of communication ...

In the future, with the large-scale production of communication battery backup systems, the cost will continue to decline, and communication ...

Types of Batteries Used in Telecom Systems: A Guide

That's where batteries come into play. They ensure that communication lines remain open, even during outages or emergencies. But ...



Types and Applications of Mobile Communication ...

Mobile communication base station is a form of radio station, which refers to a radio transceiver station that transmits information between mobile ...



Base Station Definition

A base station is a fixed wireless device that serves as a hub for other wireless devices and provides a bridge to another network. In a computer networking context, a base ...



Communication Base Station Backup Battery

Communication base station backup batteries are designed to provide a consistent and reliable power supply during electricity outages. This ensures ...



What are the main applications of communication batteries in the

In the future, with the large-scale production of communication battery backup systems, the cost will continue to decline, and communication battery backup systems will play ...





Communication Base Station Energy Solutions

During the day, the solar system powers the base station while storing excess energy in the battery. At night, the energy storage system discharges to supply power to the base station, ...

5G UPS Station Battery

Intelligent communication energy system can support data information exchange and sharing in any scenario (indoor, outdoor), providing power energy ...

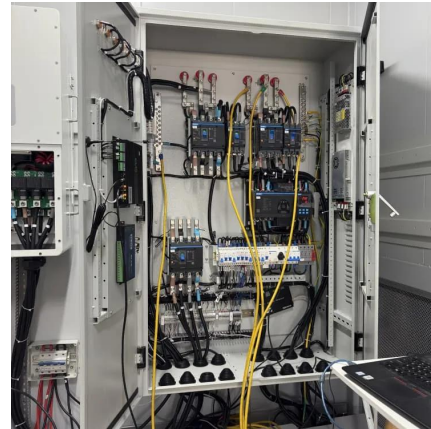


Battery Management System for Communication Base Stations

What is a virtual battery management system? This approach allows for the minimization of energy consumption at the base station without any impairment to the communication quality ...

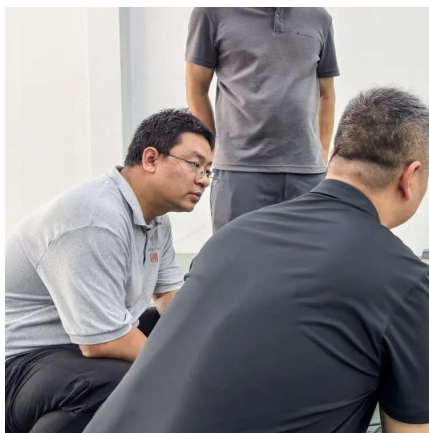
Selection and maintenance of batteries for communication base ...

Focused on the engineering applications of batteries in the communication stations, this paper introduces the selections, installations and maintenances of batteries for communication ...



What are base station energy storage batteries used for?

Rapid deployment of emergency communication systems is often needed during disasters. Batteries provide the necessary power to re-establish communication networks ...



What are base station energy storage batteries used for?

Rapid deployment of emergency communication systems is often needed during disasters. Batteries provide the necessary power to re ...



Battery backup chemistries for 5G small-cell sites

Differing battery chemistries offer more choices and performance levels. Selecting the right battery chemistry for each application is critical to ...





Basic components of a 5G base station

The basic components of a 5G BS, which are illustrated in Figure 1 [20], mainly include communication equipment and power supply equipment. In addition, power supporting ...

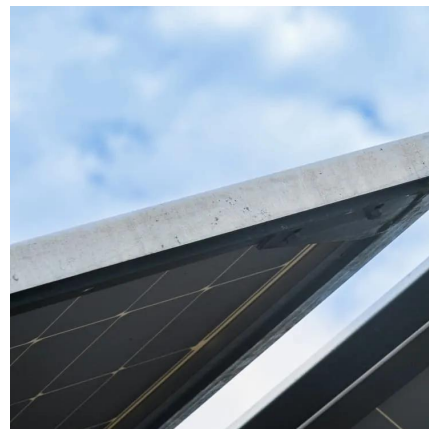


Optimization of Communication Base Station Battery ...

In the communication power supply field, base station interruptions may occur due to sudden natural disasters or unstable power supplies. This ...

UPS Batteries in Telecom Base Stations - leagend

In today's always-connected world, telecom base stations are the backbone of communication networks, ensuring seamless connectivity for ...



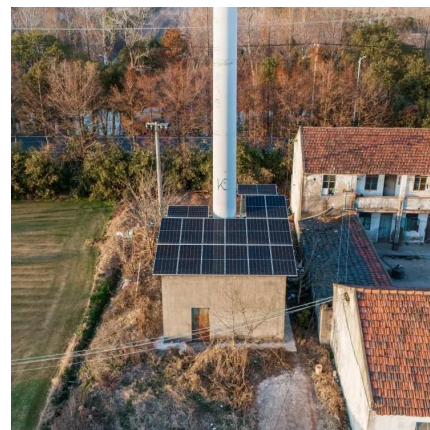
5G Base Station

5G base station is the core equipment of 5G network, which provides wireless coverage and realizes wireless signal transmission between ...



Does the communication base station energy storage lithium ...

Are lithium batteries suitable for a 5G base station? 2) The optimized configuration results of the three types of energy storage batteries showed that since the current tiered-use of lithium ...

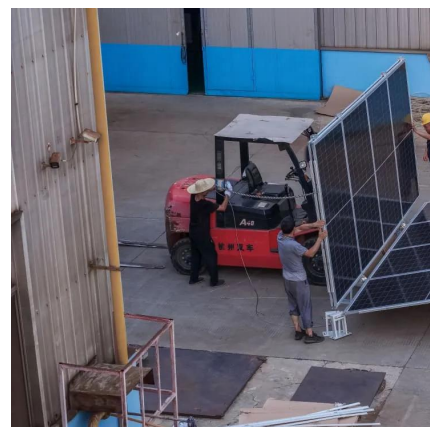


[What Are Base Station Antennas? Complete Guide](#)

In modern telecommunications systems, the base station antenna stands out as an undeniable and crucial component to facilitate our daily ...

Types of Batteries Used in Telecom Systems: A Guide

That's where batteries come into play. They ensure that communication lines remain open, even during outages or emergencies. But not all batteries are created equal. ...



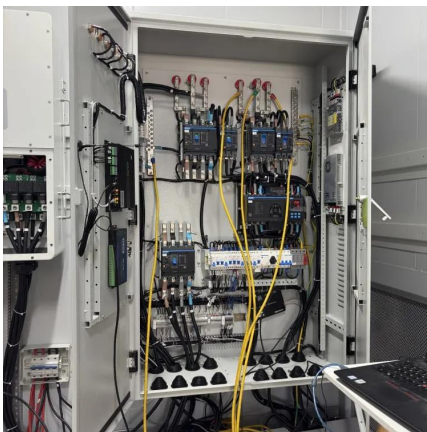


Telecom Base Station Backup Power Solution: Design ...

Discover the 48V 100Ah LiFePO4 battery pack for telecom base stations: safe, long-lasting, and eco-friendly. Optimize reliability with our ...

What is the function of the Base Station Subsystem (BSS) in GSM?

The Base Station Subsystem (BSS) is a crucial component of the GSM (Global System for Mobile Communications) architecture. It consists of the Base Transceiver Station ...



UPS Batteries in Telecom Base Stations - leagend

In today's always-connected world, telecom base stations are the backbone of communication networks, ensuring seamless connectivity for mobile phones, data services, ...

Basic components of a 5G base station

The basic components of a 5G BS, which are illustrated in Figure 1 [20], mainly include communication equipment and power supply equipment. In addition, ...



Selection and maintenance of batteries for communication base stations

Focused on the engineering applications of batteries in the communication stations, this paper introduces the selections, installations and maintenances of batteries for communication ...

Contact Us

For catalog requests, pricing, or partnerships, please visit:
<https://www.talbert.co.za>