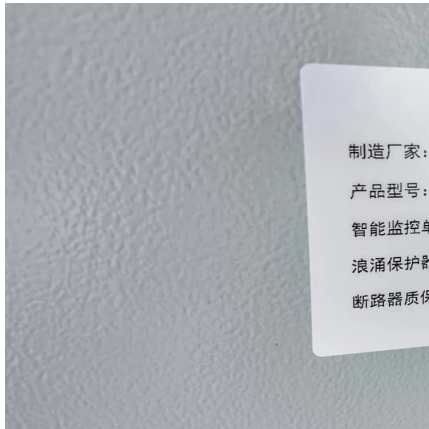


What does base station communication equipment look like





What does base station communication equipment look like



Satellite Ground Station Facilities: A Simple Guide

Satellite ground stations work by establishing a communication link with a satellite in orbit. This link allows for the exchange of data and information between the ground station ...

Base Stations

The present-day tele-space is incomplete without the base stations as these constitute an important part of the modern-day scheme of wireless communications. They are ...



What is the role of base station which is used in cellular mobile

A base station controller (BSC) is a network element that controls and monitors a number of base stations and provides the interface between the cell sites and the mobile ...

Introduction of base station and Remote Radio Unit

Generally speaking, a base station contains three antennas, each of which transmits signals in a



120-degree direction around the periphery, ...



4 types of Base stations

Macro cell, Micro cell, Pico cell and Femto cell are 4 types of base stations in wireless communication networks. Macrocell antennas must be properly ...



Introduction of base station and Remote Radio Unit

Generally speaking, a base station contains three antennas, each of which transmits signals in a 120-degree direction around the periphery, together by which can ...



[base transceiver station components](#)

A Base Transceiver Station (BTS) is a fundamental component of a mobile cellular network, responsible for establishing a communication link ...





The Base Station in Wireless Communications: The ...

Equipped with an electromagnetic wave antenna, often placed on a tall mast, the base station enables communication between mobile terminals ...



Base Transceiver Stations (BTS)

A Base Transceiver Station consists of several key components that work together to facilitate wireless communication in your project, be it a ...

Huawei: A Real 5G Innovation - Huawei's 5G Base Station

What does Huawei's 5G base station look like? Here's also a glimpse of some of its superior features. #Real5G



base station in 5g

A 5G base station, also known as a gNodeB (gNB), is a critical component of a 5G network infrastructure. It plays a central role in enabling ...



transceiver station

A transceiver station, also known as a base station or cell site in the context of mobile communications, is a critical component in wireless communication networks. Its ...



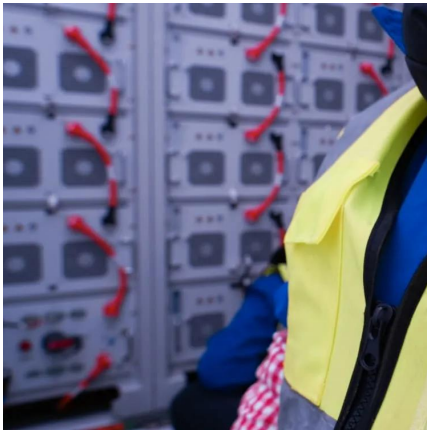
4 types of Base stations

Macro cell, Micro cell, Pico cell and Femto cell are 4 types of base stations in wireless communication networks. Macrocell antennas must be properly mounted on ground-based ...

The Base Station in Wireless Communications: The Key to ...

Equipped with an electromagnetic wave antenna, often placed on a tall mast, the base station enables communication between mobile terminals (such as mobile phones or ...



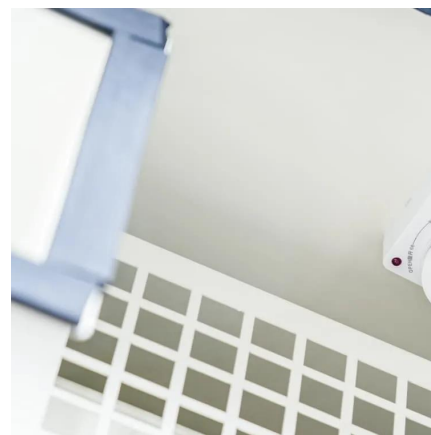


Cell sites and cell towers in a mobile cellular network

A cell site is a location or "site" where a mobile network operator installs a 2G, 3G, 4G or 5G radio base station (cell tower). Mobile operators ...

What Is A Base Station Antenna

base station antenna is a crucial component of wireless communication networks, primarily used to facilitate the transmission and reception of radio waves between a network ...



Understanding Telecommunication Towers

Each type is designed to meet specific requirements based on factors like location, terrain, and capacity. Radio equipment and ...

How Cell Towers Work to Keep Your Networks ...

Cell towers consist of various components such as antennas, base transceiver stations, masts, and ground-based equipment, enabling efficient cellular ...



Base Transceiver Stations (BTS)

A Base Transceiver Station consists of several key components that work together to facilitate wireless communication in your project, be it a commercial office space, shopping centre or a ...



base transceiver station components

A Base Transceiver Station (BTS) is a fundamental component of a mobile cellular network, responsible for establishing a communication link with mobile devices in its coverage ...



Understanding the Basics of a Base Transceiver Station

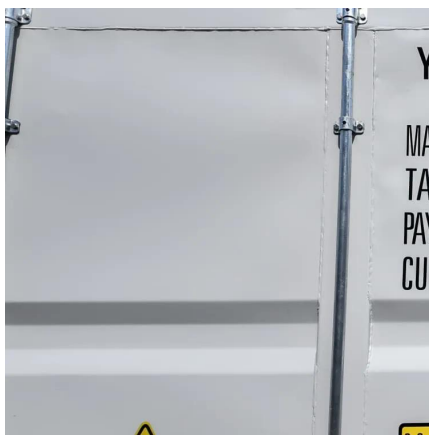
A base transceiver station is the equipment that facilitates wireless communication between user devices and the network. It serves as a critical hub in the cellular network ...





5g base station architecture

5G (fifth generation) base station architecture is designed to provide high-speed, low-latency, and massive connectivity to a wide range of devices. The architecture is more ...



EMF

A base station is made up of antennas connected by cable to electronic (radio) equipment usually housed in a room or 'shelter'. Some base stations have radio communications dishes (shaped ...

What Is A Base Station?

A base station is a piece of equipment that facilitates wireless communication between devices and a network. It contains the necessary hardware and software to transmit ...



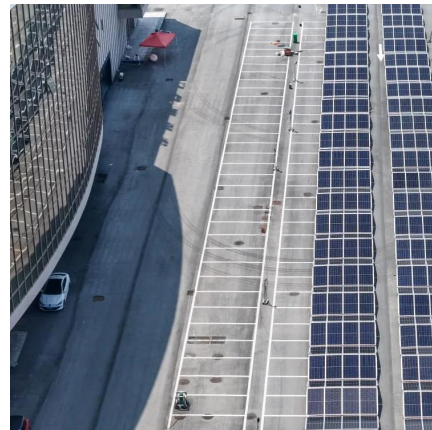
What is a base station?

A base station serves as a central connection point for a wireless device to communicate. It further connects the device to other networks or devices, usually through ...



What Is A Base Station?

A base station is a piece of equipment that facilitates wireless communication between devices and a network. It contains the necessary ...



Starlink Ground Station: Backbone of Satellite Internet

Starlink ground stations are a critical component of the satellite internet network, ensuring seamless and efficient communication between the ...

Base Stations and Cell Towers: The Pillars of Mobile ...

Base stations and cell towers are critical components of cellular communication systems, serving as the infrastructure that supports seamless ...



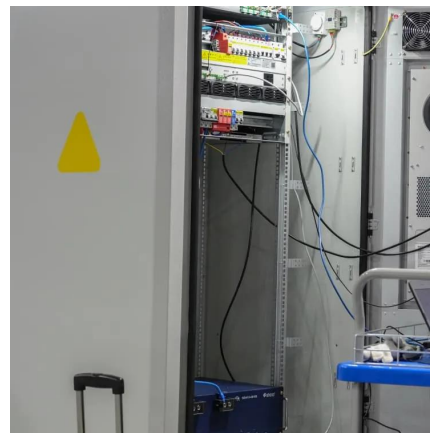


Base transceiver station

Provides transmission and reception of signals. It also does sending and reception of signals to and from higher network entities (like the base station controller in mobile telephony). This can ...

Description of the Elements of a Satellite Command ...

It is composed of an operations centre, a base station (or ground station), a ground network and a satellite. Figure 1: Example of the network ...



Contact Us

For catalog requests, pricing, or partnerships, please visit:
<https://www.talbert.co.za>