

What does base station communication do





Overview

In the area of wireless computer networking, a base station is a radio receiver/transmitter that serves as the hub of the local wireless network, and may also be the gateway between a wired network and the wireless network. It typically consists of a low-power transmitter and .

A base station is a fixed point of communication between mobile devices and the wider telecom network. It transmits and receives radio signals, enabling your phone to access voice, data, and internet services. What is a base station in a telecommunications network?

A base station is a critical component in a telecommunications network. A fixed transceiver that acts as the central communication hub for one or more wireless mobile client devices. In the context of cellular networks, it facilitates wireless communication between mobile devices and the core network.

What is the role of a base station in wireless communication?

Base stations are critical components in wireless communication networks, serving as the intermediary between mobile devices and the core network. They play a vital role in ensuring seamless connectivity, efficient data transmission, and reliable communication services.

Why are base stations important?

Base stations are the backbone of modern telecommunications networks, providing the essential infrastructure for wireless communication. They enable mobile devices to connect to the network, manage traffic efficiently, and ensure robust and reliable connectivity across wide areas.

How does a base station work?

It usually connects the device to other networks or devices through a dedicated high bandwidth wire of fiber optic connection. Base stations typically have a transceiver, capable of sending and receiving wireless signals; Otherwise if they only send the trailer it will be considered a transmitter or broadcast point only.



Why are base stations important in cellular communication?

Base stations are important in the cellular communication as it facilitate seamless communication between mobile devices and the network communication. The demand for efficient data transmission are increased as we are advancing towards new technologies such as 5G and other data intensive applications.

How does a base station communicate with a client device?

Generally, if client devices wanted to communicate to each other, they would communicate both directly with the base station and do so by routing all traffic through it for transmission to another device. Base stations in cellular telephone networks are more commonly referred to as cell towers.



What does base station communication do



Base Stations

Base stations form a key part of modern wireless communication networks because they offer some crucial advantages, such as wide coverage, continuous communications and ...

Base transceiver station

A base transceiver station (BTS) or a baseband unit[1] (BBU) is a piece of equipment that facilitates wireless communication between user equipment (UE) and a network.



The Base Station in Wireless Communications: The Key to ...

Base stations are an essential element of wireless communication systems, enabling smooth and stable connections between users and the telecommunications network. ...

Understanding the Base Station Subsystem: A Comprehensive ...

The Base Station Subsystem (BSS) manages communication between mobile devices and



networks, ensuring efficient call control, data transmission, and seamless ...



What is a Base Station in Telecommunications?

Base stations are the backbone of modern telecommunications networks, providing the essential infrastructure for wireless communication. They enable ...



Starlink Ground Stations: What They Are and How ...

Starlink ground stations are the backbone of the satellite internet revolution, providing the crucial link between the heavens and earth



Types of Base Stations

Base stations are one of the widely used components in the field of wireless communication and networks. It is an access point or base point of a ...



How a 5G cell tower works , Deutschland spricht über 5G

Base stations, or mobile communications base stations, are stationary radio or mobile communications installations essentially consisting of two elements: (1) ...



BS (Base Station)

Base stations are a critical component of modern wireless communication networks, providing the interface between wireless devices and the network infrastructure.

Base station

OverviewComputer networkingLand surveyingWireless communicationsSee also

In the area of wireless computer networking, a base station is a radio receiver/transmitter that serves as the hub of the local wireless network, and may also be the gateway between a wired network and the wireless network. It typically consists of a low-power transmitter and wireless router.



[What is a base station and how are 4G/5G base ...](#)

A base station is referred to a stationary trans-receiver used in telecommunications that serves as the primary hub for connectivity of wireless ...



What is a base station?

In telecommunications, a base station is a fixed transceiver that is the main communication point for one or more wireless mobile client devices. A base station serves as ...



[MobileNetworksExplained , Tarang Sanchar](#)

A base station is made up of antennas connected by cable to electronic (radio) equipment usually housed in a room or 'shelter'. Some base stations have ...

What is a base station and how are 4G/5G base stations different?

A base station is referred to a stationary trans-receiver used in telecommunications that serves as the primary hub for connectivity of wireless device ...



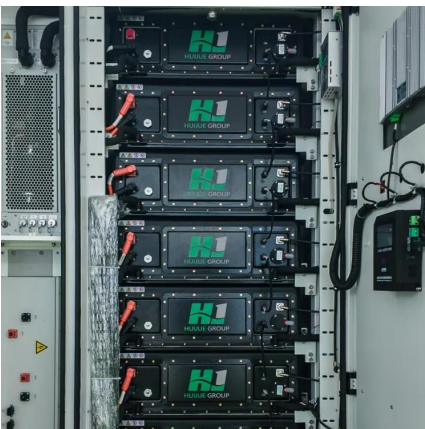
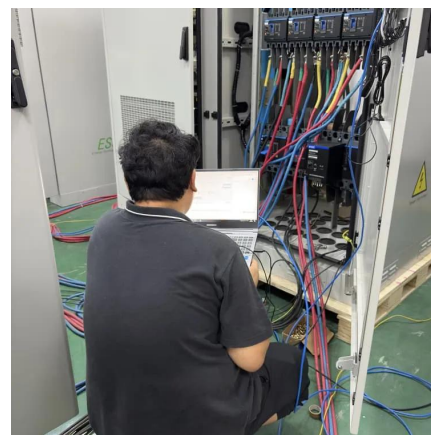


BS (Base Station)

Base stations are a critical component of modern wireless communication networks, providing the interface between wireless devices ...

Types and Applications of Mobile Communication ...

Mobile communication base station is a form of radio station, which refers to a radio transceiver station that transmits information between mobile ...

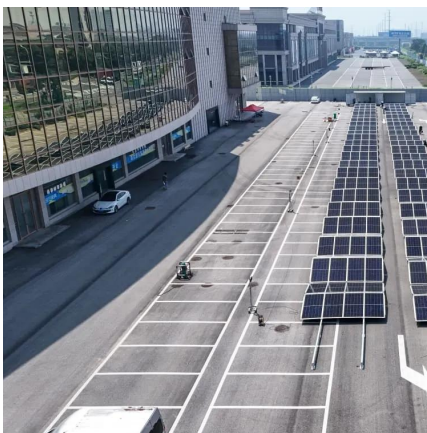


Base Stations

Base stations form a key part of modern wireless communication networks because they offer some crucial advantages, such as wide ...

Explain the role of a Base Station Controller (BSC) in GSM.

The Base Station Controller (BSC) is a critical component in a GSM (Global System for Mobile Communications) network. It plays a central role in managing multiple Base ...

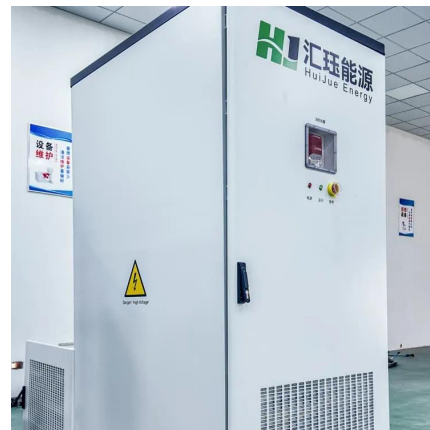


What Does a Base Station Do and Why Is It Essential for ...

A base station is a fixed point of communication between mobile devices and the wider telecom network. It transmits and receives radio signals, enabling your phone to access ...

What is the role of base station which is used in cellular mobile

What does a base station controller do? A base station controller (BSC) is a network element that controls and monitors a number of base stations and provides the interface ...



Base station

In the area of wireless computer networking, a base station is a radio receiver/transmitter that serves as the hub of the local wireless network, and may also be the gateway between a wired ...



What Is Base Station In Mobile Communication?

At the heart of this system lies the base station, a crucial component that enables seamless communication between mobile devices and the network. In this blog post, we will ...



What Is A Base Station?

A base station is an integral component of wireless communication networks, serving as a central point that manages the transmission and reception of signals between ...

MS (Mobile station)

A Mobile Station (MS) is a term used in mobile communications to refer to a device that can communicate wirelessly with a cellular network. The mobile station is typically a ...



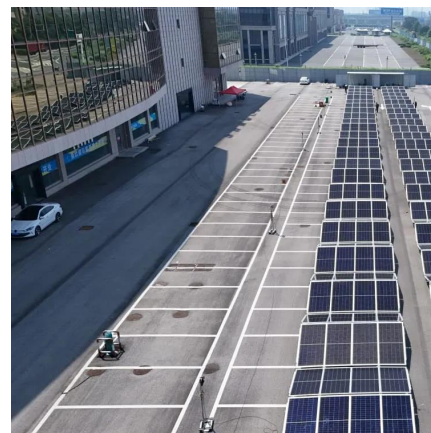
What Is A Base Station Antenna

base station antenna is a crucial component of wireless communication networks, primarily used to facilitate the transmission and ...



[What is a Base Station in Telecommunications?](#)

Base stations are the backbone of modern telecommunications networks, providing the essential infrastructure for wireless communication. They enable mobile devices to connect to the ...

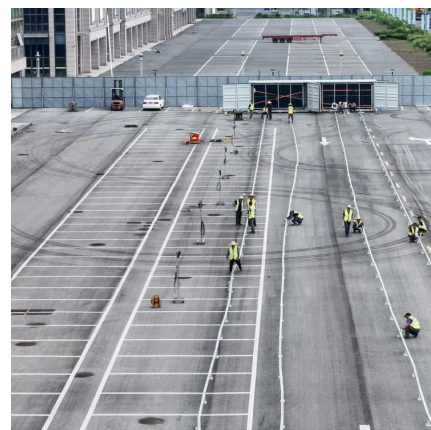


[What Are Base Station Antennas? Complete Guide](#)

In modern telecommunications systems, the base station antenna stands out as an undeniable and crucial component to facilitate our daily ...

[How do communication base stations work](#)

Communication base stations, also known as cell towers or mobile phone masts, are essential components of wireless communication networks. They allow mobile devices to connect with ...





What Is the Role of a Base Station in Wireless Communication?

Base stations are critical components in wireless communication networks, serving as the intermediary between mobile devices and the core network. They play a vital role in ...

Contact Us

For catalog requests, pricing, or partnerships, please visit:
<https://www.talbert.co.za>