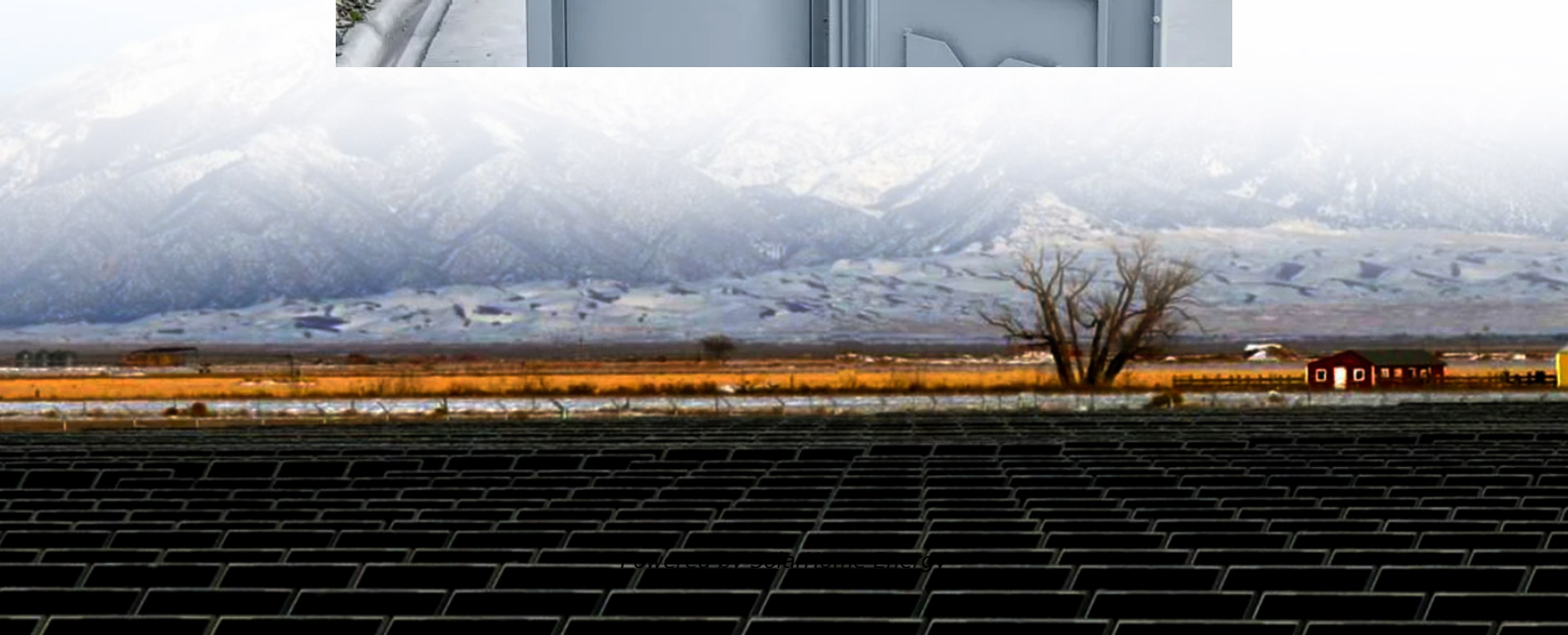


What does 12v 100ah energy storage battery mean





Overview

What is a 100Ah battery?

A battery's amp-hour (Ah) rating is a measure of its capacity—or how much charge it can store and deliver over time. A 100Ah battery theoretically provides 100 amps for 1 hour or 10 amps for 10 hours, depending on the load. However, real-world performance varies based on several factors.

How long does a 100Ah battery last?

A 100Ah battery theoretically provides 100 amps for 1 hour or 10 amps for 10 hours, depending on the load. However, real-world performance varies based on several factors. A 100Ah battery running a 10A device should last 10 hours ($100\text{Ah} \div 10\text{A} = 10\text{h}$). If the same battery powers a 50A device, it may last only 2 hours ($100\text{Ah} \div 50\text{A} = 2\text{h}$).

What is a 12 volt 100Ah lithium battery?

The 12 volt 100Ah lithium battery typically uses Lithium Iron Phosphate (LiFePO₄) technology, a standout choice due to its safety, stability, and performance. LiFePO₄ chemistry is known for its longer cycle life, high thermal stability, and resistance to overheating, making it an ideal option for both stationary and mobile power storage.

What does a 100 Ah battery mean?

Ah rating of a battery indicates the battery capacity or the amount of ampere hours it can handle. A 100Ah battery means that the battery can supply a load of 100 amperes in one hour, or 50 amperes for two hours or 10 amperes for 10 hours. How is the Flow of Electricity Similar to the Flow of Water?

.

How do I charge my 12 volt 100Ah lithium battery?

It's essential to use the right charger for your 12 volt 100Ah lithium battery.



Lithium batteries require a LiFePO₄-specific charger to ensure optimal charging performance and safety. These chargers are designed to deliver the correct voltage and current to prevent overcharging and extend the battery's life.

How many watts can a 12 volt battery store?

Capacity is one of the most critical aspects of any battery. The 12 volt 100Ah lithium battery can store up to 1,200 watt-hours (Wh) of energy. This capacity is perfect for running medium-power devices like:



What does 12v 100ah energy storage battery mean

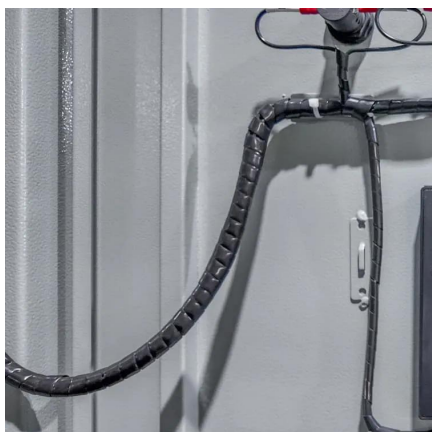


What Does 100Ah Mean on a Battery?

Our experts break down how long will 100Ah batteries last, how much solar you need for a 100Ah battery and why many choose 100Ah batteries for their RVs.

12V 100Ah vs. 24V 100Ah Batteries: Key Differences ...

Ampere-hour (Ah) measures a battery's energy capacity over time. For instance, a 100Ah battery can deliver a current of 1 ampere for 100 hours or 10 amperes ...



How Long Will a 100Ah Battery Last? - Power Queen US

Power Queen 12V 100Ah Group 24 LiFePO4 battery is a top-performing, long-lasting lithium battery that serves as an excellent replacement for lead-acid ...

How to Choose and Use 12V 100Ah Batteries Effectively

A 12V 100Ah battery refers to a battery that has a nominal voltage of 12 volts and a capacity of



100 amp-hours (Ah). This means it can ...



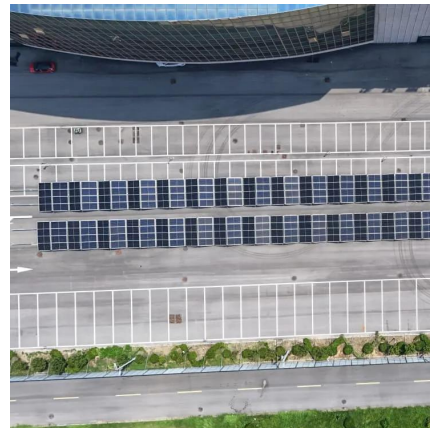
How many watts can a 12V 100Ah battery produce - ...

When it comes to energy storage, understanding how much power a battery can provide is crucial for anyone considering battery-based systems. ...



12V 100Ah vs 48V 100Ah Batteries

Conclusion The 12V 100Ah and 48V 100Ah batteries differ in many aspects, from voltage and capacity to application scenarios. The 12V battery is ideal for small, low-budget applications, ...



How does a 12V 100 Ah battery compare to a 1kWh battery

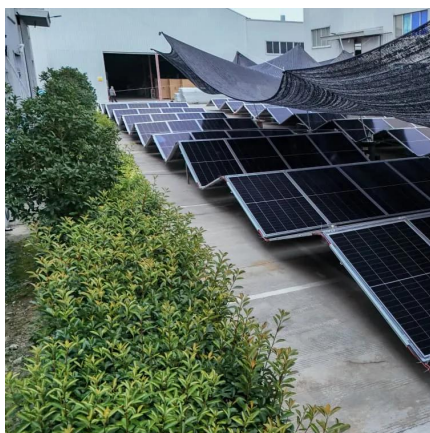
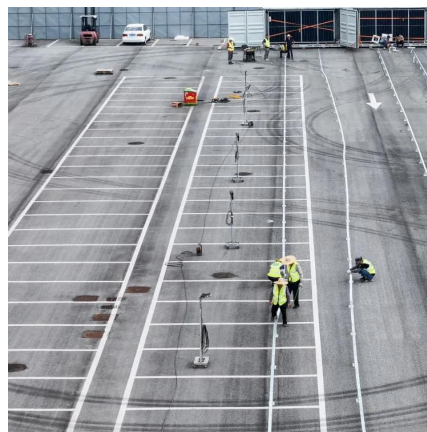
In simple terms, this means it can deliver 100 amps for 1 hour, or 10 amps for 10 hours, and so on. It translates to a total energy storage capacity of 1.2 kilowatt-hours (12 volts ...





What Does "100Ah" in a Battery Mean? A Beginner's Guide to Battery

100Ah means the battery can deliver 100 amps for 1 hour, 50 amps for 2 hours, or 10 amps for 10 hours--depending on discharge rate. The total energy storage is calculated in ...



How to Choose and Use 12V 100Ah Batteries Effectively

A 12V 100Ah battery refers to a battery that has a nominal voltage of 12 volts and a capacity of 100 amp-hours (Ah). This means it can theoretically deliver 1 amp of current for 100 ...

I know the amount of energy I need covered in kWh, all

The type of battery makes a difference, lead-acid likes a 'power' that is delivered during 10hr, example a 12V-100ah battery = 1200Wh, and the preferred maximum power draw is 1200Wh / ...



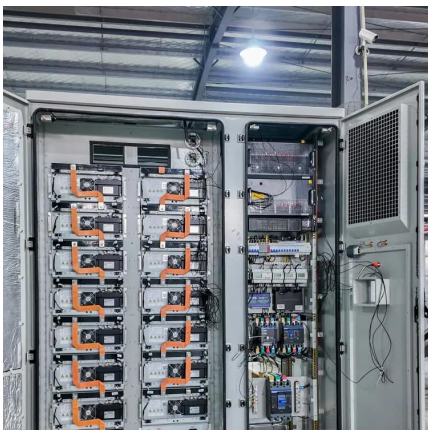
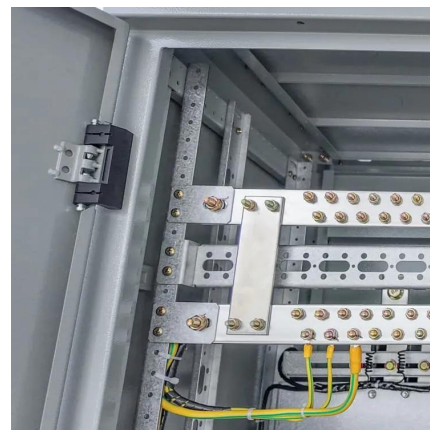
[Understanding Battery Capacity: What Does Ah Mean?](#)

Introduction to Battery Capacity When selecting batteries, the term "Ah" (ampere-hour) plays a pivotal role in determining runtime and power delivery. This metric is essential for ...



12V Storage Battery: How Much Energy is Available, Capacity, ...

For instance, a 12V battery with a 500 Ah capacity can store about 6,000 watt-hours (Wh) or 6 kilowatt-hours (KWh) (calculated as 500 Ah x 12 V). This energy can power ...



How a 12V 100Ah Deep Cycle Battery Works and the Role of ...

10 hours ago · How a 12V 100Ah Deep Cycle Battery Works and the Role of BMS in Performance The deep cycle battery has emerged as one of the most reliable energy storage options for ...

What Does 12V 100Ah Mean?

A 12V 100Ah battery stores a total of 1200 watt-hours (Wh) of energy ($12V \times 100Ah = 1200Wh$). This is a crucial figure for determining how much energy you can draw from the battery before ...



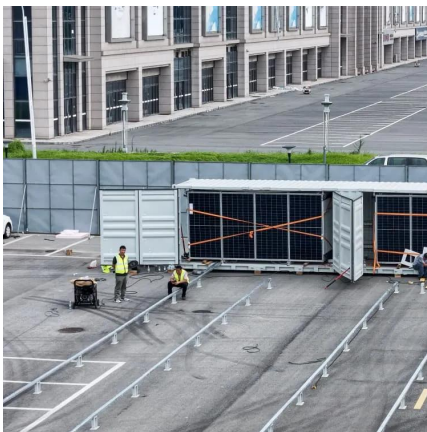


What Does a 100Ah Battery Indicate About Its Capacity?

What Does 100Ah Mean for a Battery? The term "100Ah" refers to the capacity of the battery, indicating its ability to supply current over time. ...

What Does 100Ah in a Battery Mean?

The term "100Ah" (100 Ampere-hours) is a measurement of a battery's energy storage capacity, but its real-world implications are often misunderstood. This section breaks ...



What Is a 12V 100Ah Group 24 LiFePO4 Battery

"The 12V 100Ah Group 24 LiFePO4 battery is a game-changer for energy storage applications. At Redway ESS, we emphasize producing batteries that combine longevity, ...

What Does "100Ah" in a Battery Mean? A Beginner's ...

100Ah means the battery can deliver 100 amps for 1 hour, 50 ...



Battery Runtime Calculation: How Long Your Battery ...

What does ah mean on a battery 00 Amp-hours (100Ah) The amp-hour rating of a battery is a measure of its capacity to store electrical energy. ...



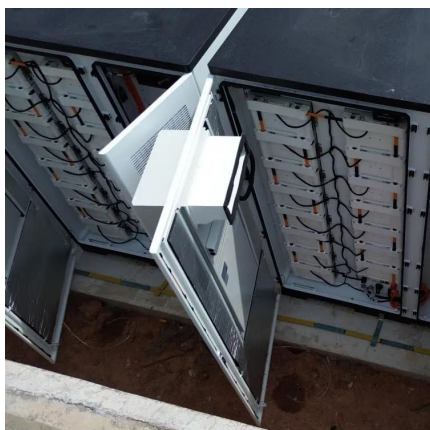
12V 100Ah vs. 24V 100Ah Batteries: Key Differences & Best Uses

Ampere-hour (Ah) measures a battery's energy capacity over time. For instance, a 100Ah battery can deliver a current of 1 ampere for 100 hours or 10 amperes for 10 hours. This rating directly ...



[How Long Will a 12V 100Ah Lithium Battery Last?](#)

A 12V 100Ah lithium battery is a common power source for energy storage, offering unparalleled efficiency, durability, and versatility. Whether ...





What Does 100Ah Mean on a Battery?

The voltage (12V) indicates the electrical potential, ensuring compatibility with your devices, while the capacity (100Ah) determines how much energy the battery can store ...



[What Does Ah Mean on a Battery . Kamada Power](#)

3 days ago · For example, a lead-acid battery with a nominal capacity of 100Ah at 25 degrees Celsius may have an actual capacity slightly higher than 100Ah; ...

12 Must-Know Facts for 12 Volt 100Ah Lithium Battery

This article will take you through 12 critical facts about the 12 volt 100Ah lithium battery, breaking down everything from its chemistry and capacity to maintenance tips and ...



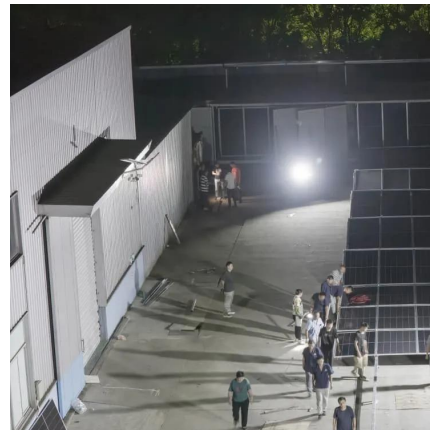
[Everything You Need to Know About 12V 100Ah ...](#)

In recent years, 12V 100Ah lithium batteries have gained significant popularity due to their efficiency, longevity, and versatility. These ...



What Does 12V 100Ah Mean?

The voltage (12V) indicates the electrical potential, ensuring compatibility with your devices, while the capacity (100Ah) determines how much energy the battery can store ...



Contact Us

For catalog requests, pricing, or partnerships, please visit:
<https://www.talbert.co.za>