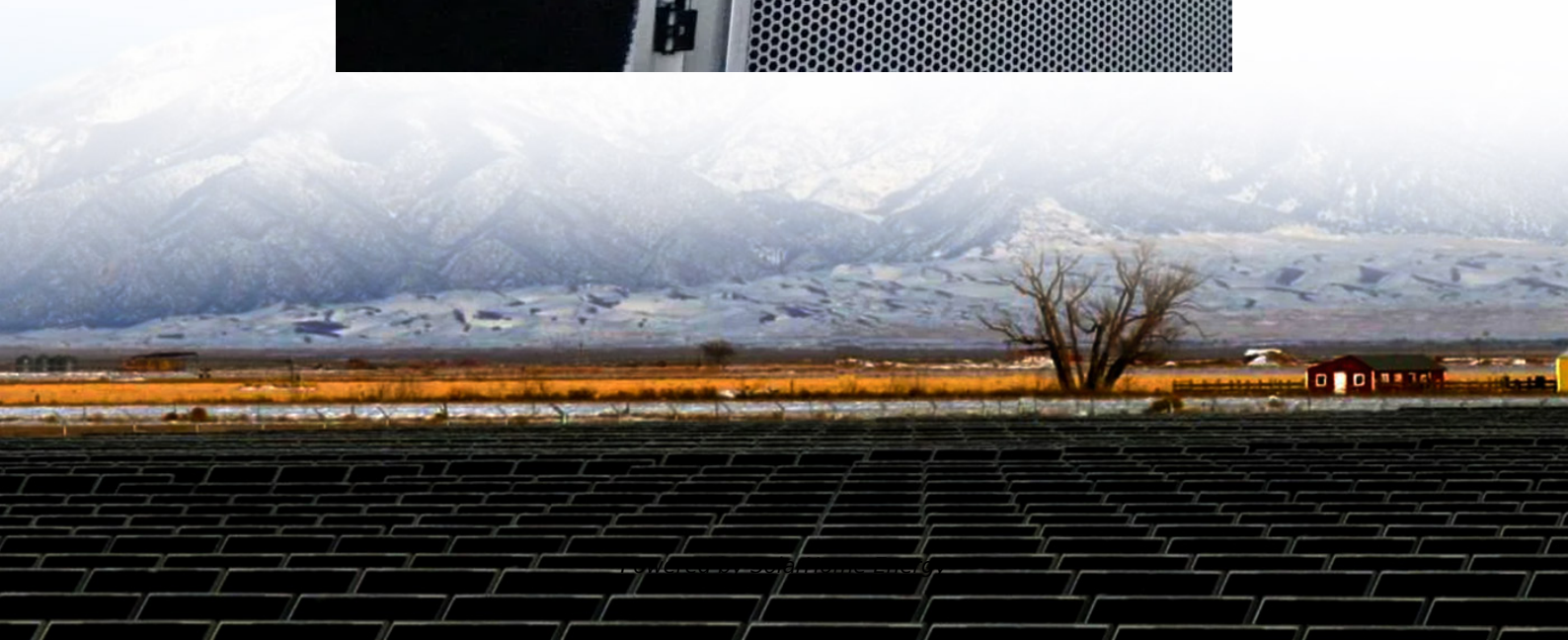


# **What does 100 kWh outdoor power supply mean**





## Overview

---

How many kilowatts does a 100 kW generator produce?

A 100 kW generator produces 100 kilowatts of electrical power. To put it in perspective, one kilowatt is equivalent to 1,000 watts. This means a 100 kW generator can deliver enough electricity to power numerous electrical devices, making it suitable for diverse applications.

How many kilowatts are in a kWh?

A kilowatt (kW) is 1,000 watts and is a measure of how much power something needs to run. In metric, 1,000 = kilo, so 1,000 watts equals a kilowatt. A kilowatt hour (kWh) is a measure of the amount of energy something uses over time. A kilowatt (kW) is the amount of power something needs just to turn it on.

How much electricity is needed to power a 1 kW device?

Let's say you have a 1 kW device. If you turn it on, it will draw 1 kW of power. It will draw this power for every second it is on. Now imagine you leave the device on for 1 hour. The question is: how much electricity was needed to power the device for that hour?

The answer is: 1 kilowatt x 1 hour = 1 kilowatt hour.

What does kWh mean in an electric car?

In other words, kWh for an electric vehicle is a measure of how much electricity can be stored inside the battery. If you had an 80 kWh battery in your car, you would be able to store twice as much electricity as a 40 kWh car. Some battery sizes of popular, new EV models are:.

Why should you buy a 100 kW generator?

A 100 kW generator can provide sufficient power to meet the demands of:  
Audio and Visual Equipment: Sound systems, projectors, and lighting rigs used



in events can consume significant energy. A 100 kW generator can support these systems, ensuring high-quality performances.

Is 100W a Watt?

So a device rated at 100W can have energy flowing through it much more quickly than a device rated at 10W. When the number of watts gets too high, the unit often changes from W to 'kW'. kW is a 'kilowatt', basically 1,000 watts. You might even come across a 'megawatt'. That's a 1,000,000 watts and is written as 'MW'.



## What does 100 kWh outdoor power supply mean

---



### What does 1 kWh outdoor power supply mean

The difference between kW and kWh is simply adding a time dimension. kW is a measure of how much energy can be produced, and kWh is what we end up with after some amount of time. 10 ...

### Watts vs. Watt Hours: The Difference?

Feeling dizzy from terms like Watts, Watt-hours, voltage, etc.? What do all these numbers actually mean when you want to choose a portable ...



### **How Much Energy Can You Get from a 100Ah 48V Battery**

This battery provides 4,800 watt-hours or 4.8 kilowatt-hours (kWh) of energy when fully charged. What Does 4800Wh Mean in Practical Terms? To put 4,800 watt-hours into ...

### **Energy Terminology - Don't know your kW from your kWh?**

It means the battery inside your electric car can store a maximum of 40 units, or kWh, of





electricity. In other words, kWh for an electric vehicle is a measure of how much electricity can ...



### What is kWh in the Electricity Bill?

Electric power usually has two components, including active power (kWh) and reactive power (kVARh). When the active and reactive power ...

### **Understanding Refrigerator Energy Consumption: How Much kWh Does ...**

What is kWh and Why is it Important? Before we dive into the specifics of refrigerator energy consumption, let's clarify what kWh means. kWh stands for kilowatt-hour, a unit of energy ...



### **Electricity Cost Calculator**

The electricity cost calculator is designed to help consumers estimate and monitor their electrical energy consumption costs. Power consumption in watts or ...



## What Do Battery Specifications Actually Mean?

Battery specs can be confusing. Learn what kWh, depth of discharge, round-trip efficiency and cycle life really mean before you buy.



## **Outdoor power supply FAQ: What does the watt of outdoor power ...**

Understand the Power and Capacity of Outdoor Power Supplies: Essential Parameters for Choosing the Right Device. Learn how to calculate the power and capacity of ...

## **Energy Terminology - Don't know your kW from your kWh?**

It means the battery inside your electric car can store a maximum of 40 units, or kWh, of electricity. In other words, kWh for an electric vehicle is a measure of how much ...



## **Outdoor power supply FAQ: What does the watt of outdoor power supply mean?**

Understand the Power and Capacity of Outdoor Power Supplies: Essential Parameters for Choosing the Right Device. Learn how to calculate the power and capacity of ...



## The Complete Off Grid Solar System Sizing Calculator

The primary factor determining your off-grid system size is your Daily Energy Consumption, measured in Watt-hours (Wh) or kilowatt-hours (kWh). 1 ...

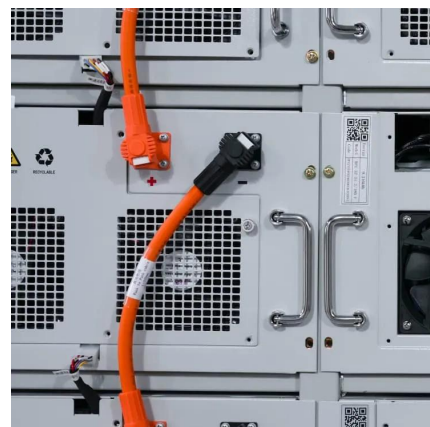


## How much power does the outdoor energy storage power supply ...

Outdoor energy storage power supplies demonstrate significant versatility in their power capacities, with options ranging from 1kWh up to 100kWh or more, depending on ...

## Electric car kW figures explained

What does kW mean? What does kWh mean? When it comes to EV power, battery capacity, and charging, ...





## Energy units explained

The average electric vehicle battery capacity is 40 kWh, but this varies from 20 kWh to 100 kWh depending on the make and model of the electric car. With electric vehicles, the 'appliance' ...

## [Complete Guide to Power Factor \[Power Factor ...](#)

The power factor measures how effectively you use the supplied electricity and can be calculated using the  $PF = kW \div kVA$  formula. Learn what ...



## The Complete Off Grid Solar System Sizing Calculator

The primary factor determining your off-grid system size is your Daily Energy Consumption, measured in Watt-hours (Wh) or kilowatt-hours (kWh). 1 kWh = 1,000 Wh. The ...

## 100kWh battery - unveiling its power, types and benefits

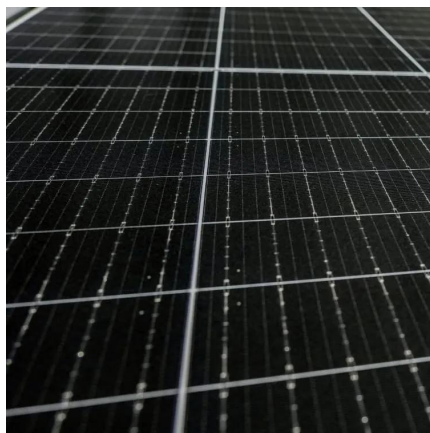
A 100 kWh battery, for instance, would last for 100/10 or 10 hours if an electronic device used 10 kW of power. A 100 kWh battery will survive for 1000 hours if a ...





## [Kilowatt Hours: Everything You Need To Know](#)

Kilowatt-hour is the commercial measure of energy needed to stay at 1,000 watts (kilowatt) of power for an hour. A 100-watt bulb will consume 1 ...



## **Understanding kW vs. kWh: A Guide to Energy and ...**

Discover the difference between kW vs kWh in our comprehensive guide. Learn to calculate, understand, and save on your energy consumption ...



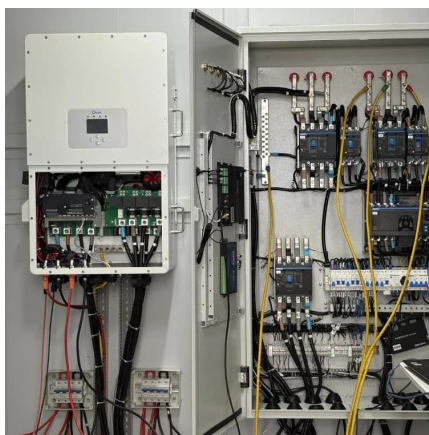
## **What is a Kilowatt-hour (kWh) and What Can It Power?**

This means a 100 kW generator can deliver enough electricity to power numerous electrical devices, making it suitable for diverse applications. ...



## 100 kWh Solar Battery

These solar batteries are rated to deliver 100 kilowatt hours kWh per cycle. Check your power bills to find the actual kWh consumption for your home or business.



## What a 100 kW Generator Can Power

This means a 100 kW generator can deliver enough electricity to power numerous electrical devices, making it suitable for diverse applications. Generators are typically ...

## What is a Kilowatt-hour (kWh) and What Can It Power?

It's one kilowatt of power (1000 watts) used for one hour. It's abbreviated as kWh. It's not the number of kilowatts you're using in an hour, even though that seems to make sense. Think of it ...



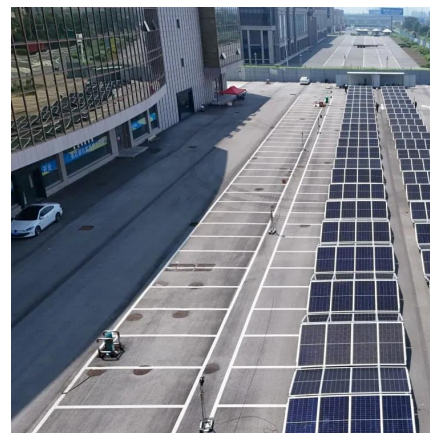
## How to Calculate Solar Panel KWp (KWh Vs. KWp + Meanings)

In simple terms, KWp refers to the maximum power output capability of a solar panel or solar system. Each solar panel is assigned a KWp rating by the manufacturer, ...



## What Is a Kilowatt Hour? kW vs. kWh Explained

A kilowatt-hour (kWh) is a unit of energy that measures how much electricity you use over a given amount of time. Quantified, it represents the consumption of 1,000 watts of ...

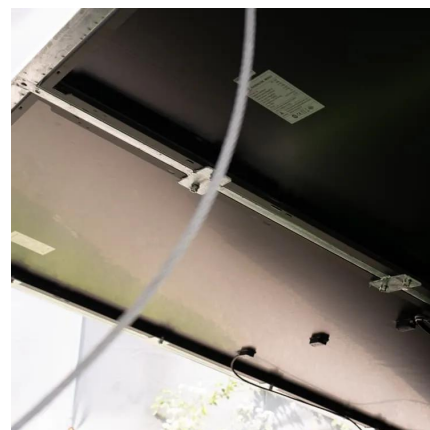


## How to Calculate Solar Panel KWp (KWh Vs. KWp

In simple terms, KWp refers to the maximum power output capability of a solar panel or solar system. Each solar panel is assigned a ...

## What Does kWh mean? kWh Cost and Appliances ...

How much does 1 kWh of electricity cost? Historically, this has changed from year to year and from supplier to supplier. However, with the ...





## 100 kWh Solar Battery

These solar batteries are rated to deliver 100 kilowatt hours kWh per cycle. Check your power bills to find the actual kWh consumption for your home or ...

## Contact Us

---

For catalog requests, pricing, or partnerships, please visit:  
<https://www.talbert.co.za>