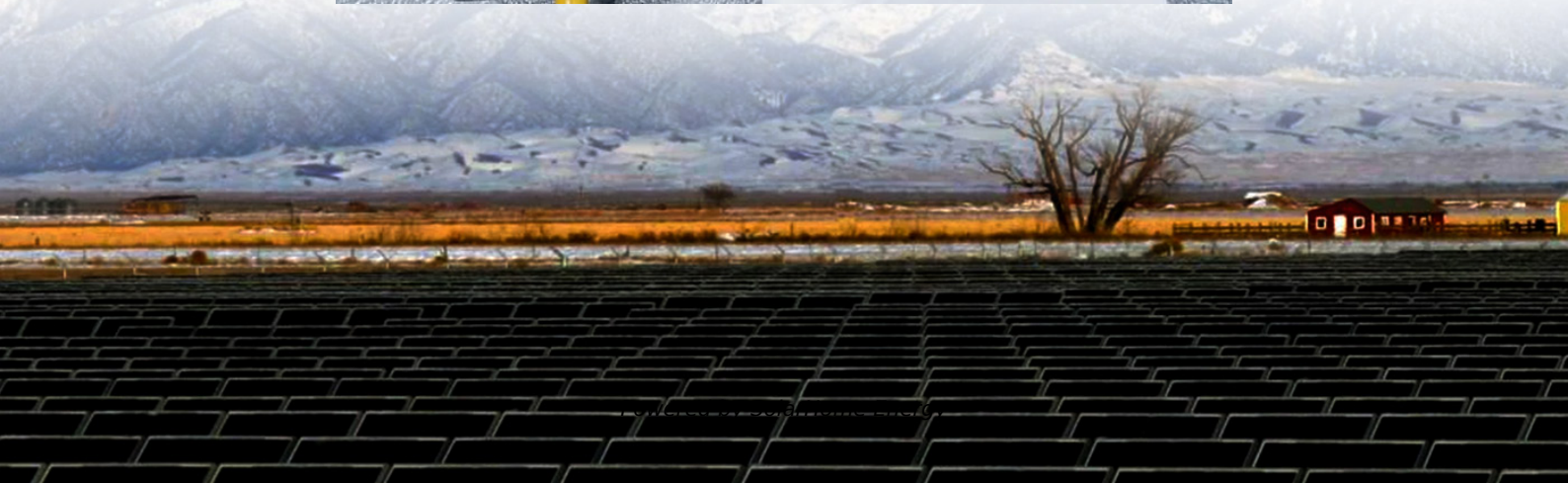


What are the reasons for the elimination of EMS in communication base stations





Overview

Why is radio communication important in EMS?

Proper radio communication allows EMS personnel to prepare for the call before arrival on the scene. Understanding the scene provides time for the responder to formulate a response before arrival, especially if a patient must be transported to the ER. FIGURE 1. Portable radios are essential gear in mass casualty incidences but.

What are the main functions of the EMSCOM system?

The EMSCOM system's main functions are to provide communications between ambulance/rescue and hospital emergency rooms to allow notification of incoming injured patients to health care facilities.

What is effective verbal communication in EMS?

Effective verbal communication is a daily challenge for EMS providers. Therapeutic communication requires etiquette and special understanding when providing care to a variety of audiences. Use effective verbal communication strategies, including questioning skills.

How does an EMS responder determine effective communication?

At a small scene of up to three individuals, EMS must determine if effective communication can occur with the number of team members who have responded. Each EMS responder assesses an individual and communicates that patient's needs back to the team.

Are close-ended questions required in EMS?

In a few exceptions, close-ended questions are necessary. EMS personnel are often required to use radios, cellphones, and other electronic communication devices. No matter what devices are used, some aspect of face-to-face reporting will be required upon arrival at the hospital to ensure a smooth transition for the patient and family.



What is the purpose of the EMSCOM manual for?

This manual is provided for the use of all services that may have occasion to use the New Mexico Emergency Medical Services Communications (EMSCOM) System. The intended purpose of the manual is to provide a basic understanding of the capabilities and proper utilization of the State EMSCOM system. Maintenance policies are also included.



What are the reasons for the elimination of EMS in communication

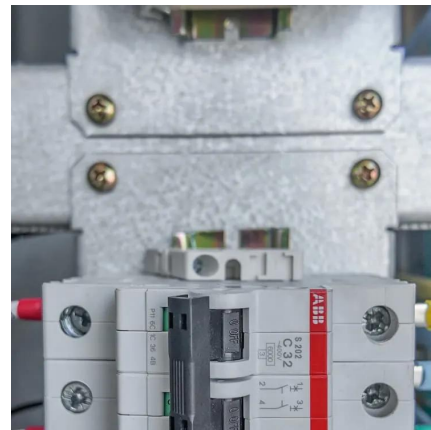


Wireless Communication Base Station Location Selection ...

1. Introduction Recently, with the rapid development of wireless communication technology, the enhancement of wireless network performance is concerned with meeting the ...

Mastering EMS Communication: The Essential Role of Base ...

Understanding the vital requirements for EMS communication, particularly the significance of a base station's height, is crucial for anyone preparing for the North Carolina EMT State Exam.



Microsoft Word

Providing high-quality emergency response, including the deployment of technology platforms that improve communications and speed transmission of data, photo ...

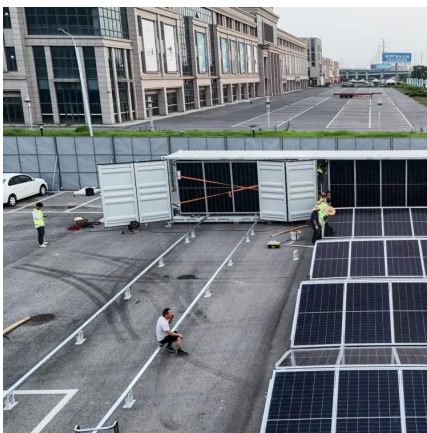
Effective Communication In EMS

Medical errors in the U.S. cause 250,000-400,000 deaths annually, primarily due to communication failures. Experts urge improved ...



[EMT-B Chapter 4 Quiz Flashcards , Quizlet](#)

Study with Quizlet and memorize flashcards containing terms like Which of the following is NOT a function of the Federal Communications Commission (FCC)? A. Maintaining communications ...



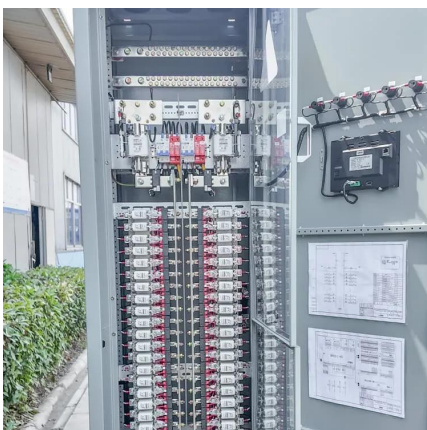
Chapter 5 Communication Questions Flashcards , Quizlet

To ensure accuracy and synchronicity, most EMS systems use military time rather than standard A.M. and P.M. designations. Choose the military time that correctly represents 9:32 P.M. ...



EMSCOM

It also provides greater area coverage and increases the communication range of remote base stations, as well as mobile and portable radios. The majority of the repeaters operate on MED ...





Solved Explain the reason that the antennas used in , Chegg

Question: Explain the reason that the antennas used in mobile communication base-stations are installed at the same position with orthogonal polarization, and two of them are oriented in ...

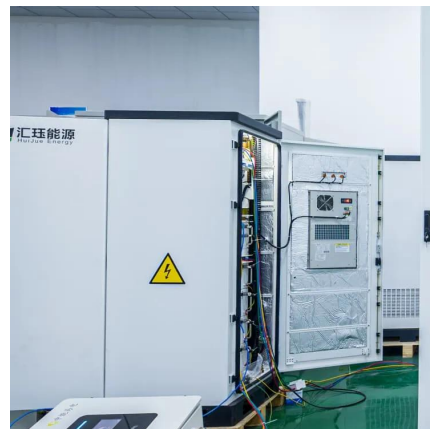


Wisconsin Emergency Medical Services Communication Plan

The plan was originally created in 2002 with input from an ad hoc committee attached to the EMS Advisory Board. Subsequent versions of the plan were adopted as changes in rules and ...

REGIONAL

When combined, all of the communications systems comprise the regional MED-Radio communications system. This system alerts Emergency Medical Services (EMS) to incidents, ...



[?????? ??????? ????? \(dog nursery\)|DOG](#)
[...](#)

What causes childhood cancers is not fully understood. which means your initial subscription will automatically renew until canceled. You have the right to cancel service at any time by calling ...



What is a base station and how are 4G/5G base ...

What is a base station and how are 4G/5G base stations different? Base station is a stationary trans-receiver that serves as the primary hub for ...



please do it in typing form ill give you up thumb definitely ...

Question Q3. Explain the reason that the antennas used in mobile communication base-stations are installed at the same position with orthogonal polarization, and two of them are oriented in ...

Solved Q3. Explain the reason that the antennas used ...

Question: Q3. Explain the reason that the antennas used in mobile communication base-stations are installed at the same position with ...



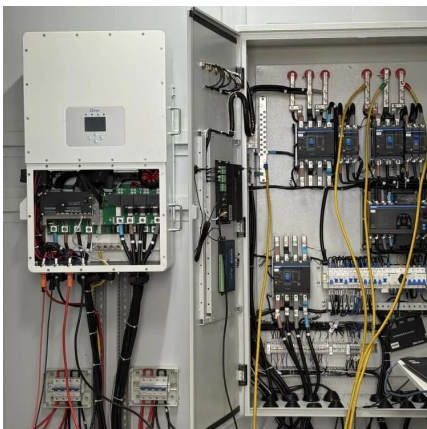


Principles of Communications and Documenting , SpringerLink

This chapter will discuss the various methods of communication available to the EMT as well as proper documentation of actions and findings during and after an EMS call.

Enabling the 5G Era, Huijue Group Upgrades Energy ...

5G networks are the core engine driving the development of "Digital China" and "Internet of Everything". Facing the challenges of the ...

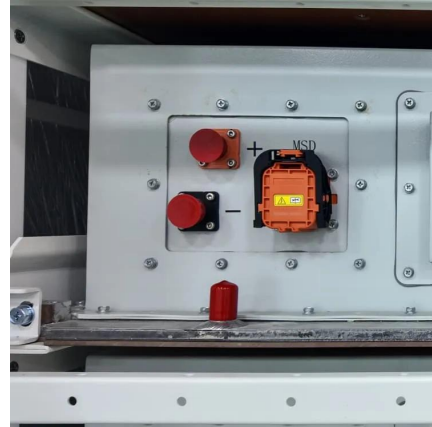


Effective Communication in EMS Systems: A Comprehensive Guide

Efficient communication in EMS is paramount for effective emergency response and patient care. Understanding and utilizing advanced communication systems, adhering to regulations, and ...

[Chapter 5 EMS Communications Flashcards , Quizlet](#)

Study with Quizlet and memorize flashcards containing terms like base station, biotelemetry, cellular telephones and more.



Risks and Mitigations for Losing EMS Functions

Its primary contribution is to identify and discuss BES reliability risks due to the loss of EMS functions, analyze causes of loss of EMS functions based on EMS events reported between ...



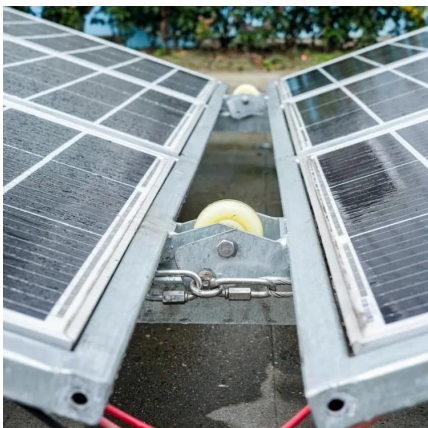
E74

Effective verbal communication is a daily challenge for EMS providers. Therapeutic communication requires etiquette and special understanding when providing care to a variety ...



Ch. 4 Communications and Documentation Flashcards , Quizlet

Study with Quizlet and memorize flashcards containing terms like "hot line", A trusting relationship built with your patient, Communication through an interconnected series of repeater stations ...





EMS

You are working in an EMS system that utilizes radio codes. What is the best advantage of radio codes?



EMSCOM

In the latter, base stations, "talk out" on one frequency and the mobiles "talk-back" on the second. A "semi-duplex" system also uses two frequencies, but one or more of the radios (usually the ...



Chpt. 4 Flashcards , Quizlet

The role of dispatch in an EMS communications system is to obtain info about the nature of the emergency, direct the appropriate emergency services to the scene and



Contact Us

For catalog requests, pricing, or partnerships, please visit:
<https://www.talbert.co.za>