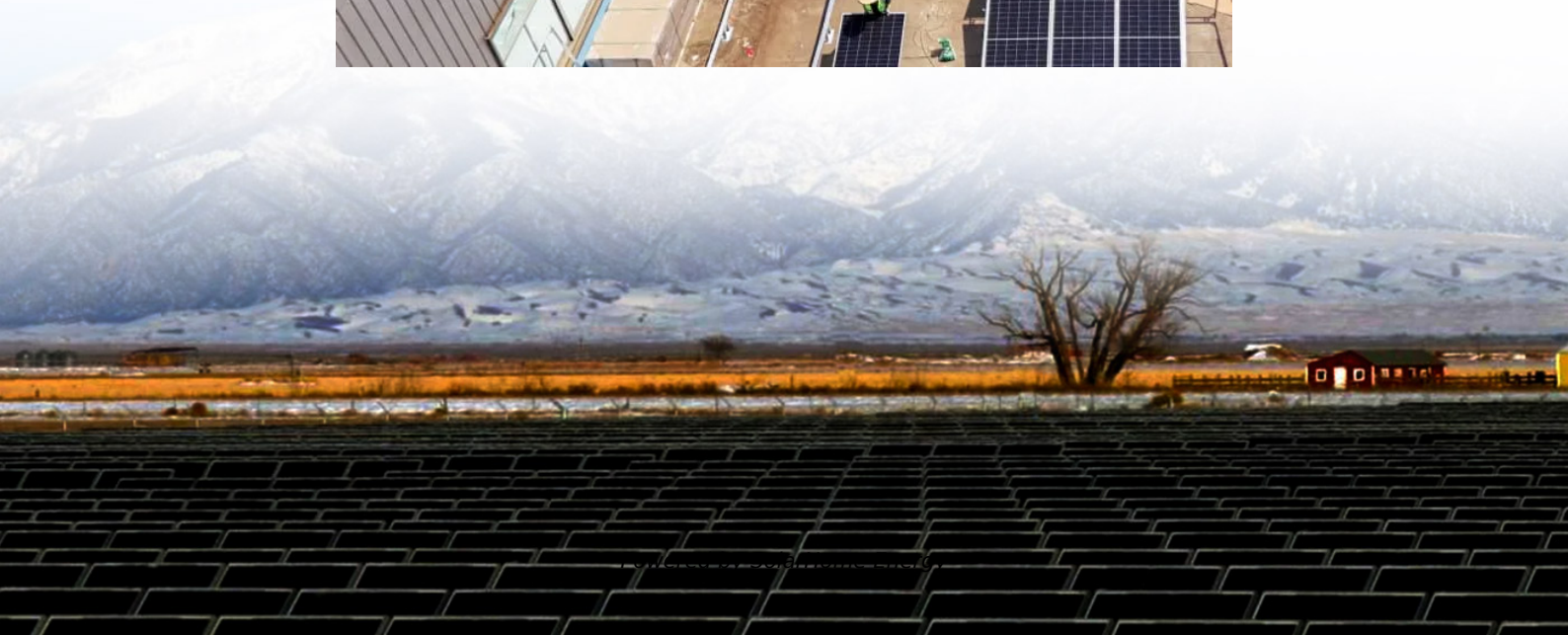


What are the mobile communication base stations





Overview

Base station (or base radio station, BS) is – according to the 's (ITU) (RR) – a " in the ." A base station is called in , in (), and in . The term is used in the context of ,

A cell site, cell tower, or cell base station is a cellular-capable mobile device site. It consists of electronic communication equipment and antennas. They are usually on a radio mast, tower, or any other elevated structure. A cell in a cellular network is created through the cell tower or cell site. What is a mobile communication base station?

Mobile communication base station is a form of radio station, which refers to a radio transceiver station that transmits information between mobile phone terminals through a mobile communication exchange center in a certain radio coverage area.

What is a base station in a telecommunications network?

A base station is a critical component in a telecommunications network. A fixed transceiver that acts as the central communication hub for one or more wireless mobile client devices. In the context of cellular networks, it facilitates wireless communication between mobile devices and the core network.

How do base stations work?

Base stations use antennas mounted on cell towers to send and receive radio signals to and from mobile devices within their coverage area. This communication enables users to make voice calls, send texts, and access data services, connecting them to the wider world. Network Management and Optimization.

What are base stations & cell towers?

Base stations and cell towers are critical components of cellular communication systems, serving as the infrastructure that supports seamless mobile connectivity. These structures facilitate the transmission and reception of signals between mobile devices and the wider network, enabling voice calls, text messages, and data services.



What is a signal transmission & reception base station?

Signal Transmission and Reception Base stations use antennas mounted on cell towers to send and receive radio signals to and from mobile devices within their coverage area. This communication enables users to make voice calls, send texts, and access data services, connecting them to the wider world.

Why are base stations important?

Base stations are the backbone of modern telecommunications networks, providing the essential infrastructure for wireless communication. They enable mobile devices to connect to the network, manage traffic efficiently, and ensure robust and reliable connectivity across wide areas.



What are the mobile communication base stations

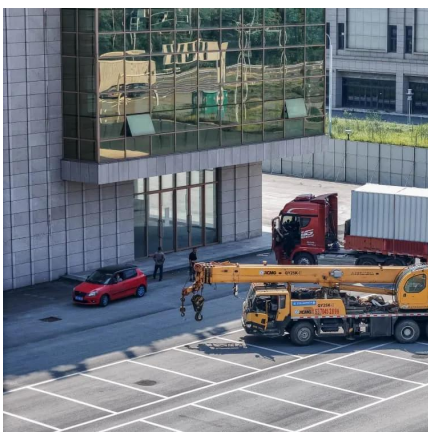


Types and Applications of Mobile Communication Base Stations

Mobile communication base station is a form of radio station, which refers to a radio transceiver station that transmits information between mobile phone terminals through a ...

Cellular Networks, Base Stations, and 5G RAN

A user's mobile telephone communicates through the air with an base station antenna, which in turn links to the central exchange of the ...



Base Stations

The present-day tele-space is incomplete without the base stations as these constitute an important part of the modern-day scheme of wireless ...

What is a base station?

In telecommunications, a base station is a fixed transceiver that is the main communication point for one or more wireless mobile client devices. A

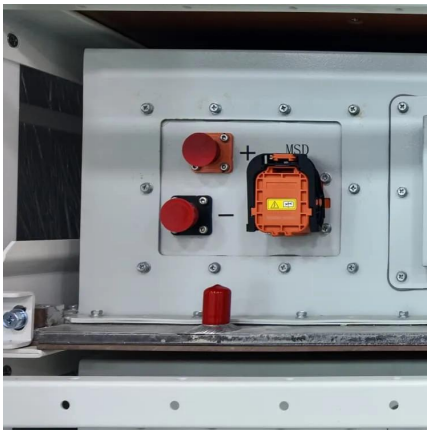


base station serves as ...



Basestation

A base station (BS) is defined as a fixed communication facility that manages radio resources for one or more base transceiver stations (BTSs), facilitating radio channel setup, frequency ...



BSS (Base Station Subsystem)

Base Station Subsystem (BSS) is an essential component of the GSM (Global System for Mobile Communications) network architecture. It is responsible for managing the ...



How do communication base stations work

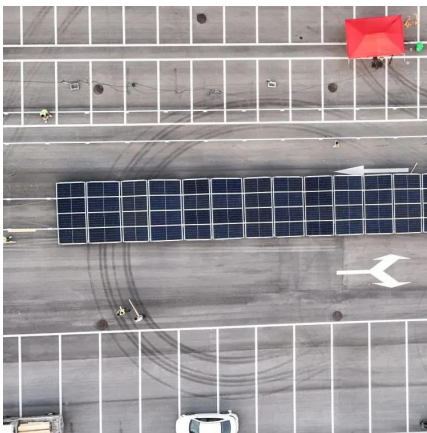
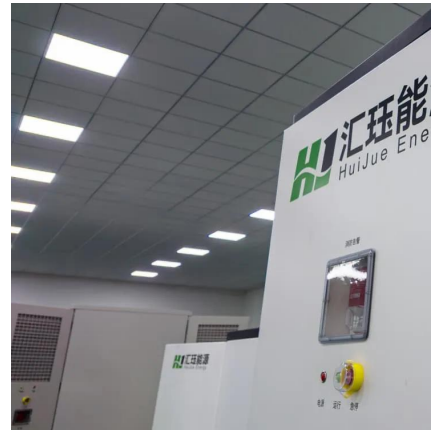
Introduction Communication base stations, also known as cell towers or mobile phone masts, are essential components of wireless communication networks. They allow mobile devices to ...





Cell sites and cell towers in a mobile cellular network

A picture of a cell tower at a cell site Cell site means the location where a cell tower is installed A cell site is a location or "site" where a mobile network operator installs a ...



BTS (base station transceiver)

BTS, or Base Station Transceiver, is a critical component in modern mobile communication networks. BTS is responsible for transmitting and receiving wireless signals ...

Base station

OverviewLand surveyingComputer networkingWireless communicationsSee also

Base station (or base radio station, BS) is - according to the International Telecommunication Union's (ITU) Radio Regulations (RR) - a "land station in the land mobile service." A base station is called node B in 3G, eNB in LTE (4G), and gNB in 5G. The term is used in the context of mobile telephony, wireless computer networking



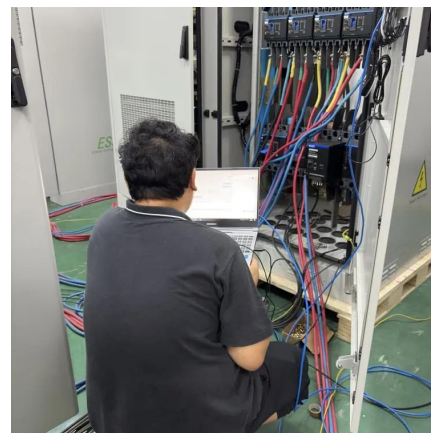
Terms used

Mobile station is combination of user's all equipment (mobile phone, SIM, card etc.) and software needed for communication with a GSM ...



What is a Base Station in Telecommunications?

Base stations are the backbone of modern telecommunications networks, providing the essential infrastructure for wireless communication. They enable ...

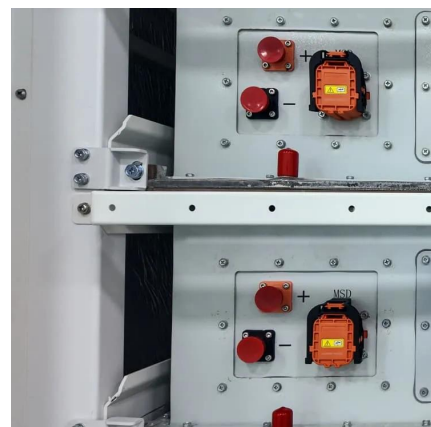


Understanding the role of base stations in wireless communication

A base station is a fixed transceiver used in telecommunications that serves as the primary hub for one or more wireless mobile client devices. The base station acts as the ...

Base Stations

The present-day tele-space is incomplete without the base stations as these constitute an important part of the modern-day scheme of wireless communications. They are ...



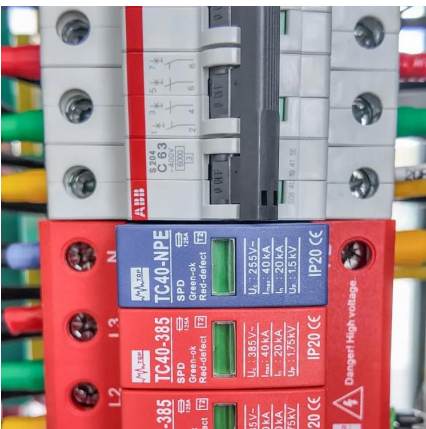
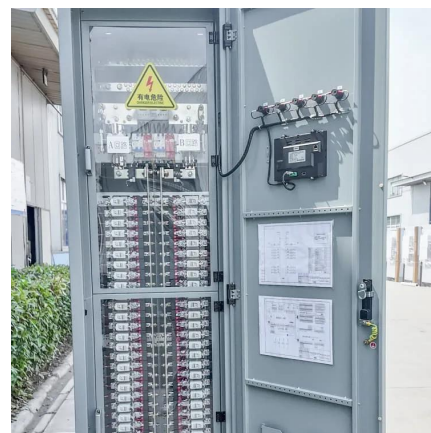


What is a Base Station in Telecommunications?

Base stations are the backbone of modern telecommunications networks, providing the essential infrastructure for wireless communication. They enable mobile devices to connect to the ...

What is the function of a Base Transceiver Station ...

A Base Transceiver Station (BTS) is a fundamental component in a GSM (Global System for Mobile Communications) network, serving as the ...



Base station

Base station (or base radio station, BS) is - according to the International Telecommunication Union 's (ITU) Radio Regulations (RR) [1] - a " land station in the land mobile service." A base ...

How do communication base stations work

Communication base stations, also known as cell towers or mobile phone masts, are essential components of wireless communication networks. They allow mobile devices to connect with ...



[ch 9 quiz digital Flashcards , Quizlet](#)

A (n)___ handoff occurs when a cellular communication is conditionally handed off from one base station to another and the mobile equipment is simultaneously communicating with multiple ...



Unraveling the Mysteries of Cell Towers and Base ...

Each cell phone communicates with another cell phone using the radio waves that go through an antenna local to a cellular base station. The coverage area ...



What Is A Base Station?

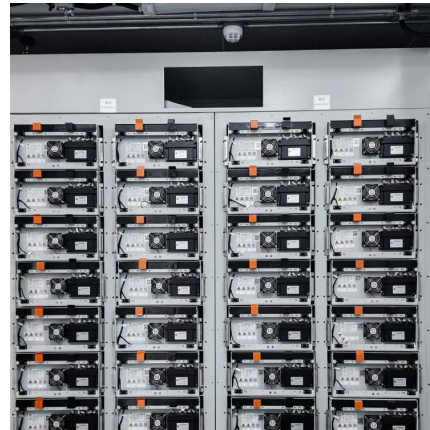
A base station is an integral component of wireless communication networks, serving as a central point that manages the transmission and ...





What is the difference between Base Station and ...

The performance of base stations directly affects the service quality of mobile communication networks, including call quality, data transmission rate, ...



What Is Mobile Station in Wireless Communication? Explained

What is a Mobile Station (MS)? A Mobile Station (MS) is a wireless device capable of communicating with a mobile network. It encompasses the entire user equipment, including ...

Base Stations and Cell Towers: The Pillars of Mobile Connectivity

Base stations use antennas mounted on cell towers to send and receive radio signals to and from mobile devices within their coverage area. This communication enables ...



What Is A Base Station?

A base station is an integral component of wireless communication networks, serving as a central point that manages the transmission and reception of signals between ...



What is the function of the Base Transceiver Station ...

The Base Transceiver Station (BTS) is a critical component of the cellular network architecture, particularly in the GSM (Global System for ...



Breaking Down Base Stations - A Guide to Cellular Sites

A mobile telecom site usually takes the form of a mobile tower rig like the popular cell-on-wheels. This equipment can be installed remotely to bridge gaps in new network ...

Base Stations and Cell Towers: The Pillars of Mobile ...

Base stations use antennas mounted on cell towers to send and receive radio signals to and from mobile devices within their coverage area. ...





Unraveling the Mysteries of Cell Towers and Base Stations

Each cell phone communicates with another cell phone using the radio waves that go through an antenna local to a cellular base station. The coverage area where the service is provided to ...

How does the Mobile Station (MS) differ from the Mobile ...

In GSM (Global System for Mobile Communications) and related mobile communication systems, the terms "Mobile Station" (MS) and "Mobile Equipment" (ME) refer ...



Contact Us

For catalog requests, pricing, or partnerships, please visit:
<https://www.talbert.co.za>