

Togo three-phase inverter grid connection





Overview

What is a 3 phase PV inverter?

1 Safety Instructions User Manual 7 2 Product Description 2.1 System Introduction The inverter is a transformerless 3-phase PV grid-connected inverter.

Do three phase inverters need neutral connection?

In most countries, three phase inverters require neutral connection at all times. In some countries, the three phase inverters can be connected to delta grids; in other cases, multiple single phase inverters can be used. Prior to system installation, refer to:.

What is the feed-in limit for a 3 phase inverter?

figure 7-18 Feed-in Limitation table 7-6 Description of Feed-in Limitation Parameters Parameter Description Range Installed PV Power DC side power 3.00 kW- 20.00 kW Zero-export per Phase For a three-phase inverter, the feed-in power of Phase A, Phase B, and Phase C are required shall be 0.

Can I use a 3 phase inverter with a SolarEdge?

SolarEdge commercial optimizers and three phase inverters should only be replaced with SolarEdge commercial optimizers and inverters. Third party equipment is not compatible. The SolarEdge power harvesting solution maximizes the power output from any type of solar photovoltaic (PV) installation while reducing the average cost per watt.

What are the specifications of a 3 phase inverter (Europe)?

71 Technical Specifications - Three Phase Inverters (Europe) (1) SE33.3K model requires a medium voltage transformer. For SE27.6K - when set to Germany Power Factor is limited to 0.9. 73 Provided with the inverter in India only.



How do you install a 3 phase inverter?

Insert the lock through the knob opening and lock. The inverter is typically mounted vertically, and the instructions in this section are applicable for vertical installation. Some three phase inverter models can be installed horizontally (above 10° tilt) as well as vertically, and at any tilt over 10° up to 90°.



Togo three-phase inverter grid connection



[Quick Start Guide: EI Inverter Three Phase \(EU\)](#)

It is the communications hub and points for all grid, inverter, PV and battery connections. When paired with Tigo TS4 Flex MLPE, module level monitoring, optimization, and fire safety ...

Three Phase System

In most countries, three phase inverters require neutral connection at all times. In some countries, the three phase inverters can be connected to delta grids; in other cases, multiple single ...



TIGO TSS-3PS QUICK START MANUAL Pdf Download , ManualsLib

View and Download Tigo TSS-3PS quick start manual online. EI Link - Three Phase. TSS-3PS inverter pdf manual download.

Repowering a PV System with a Tigo Inverter: The ...

This will involve setting the inverter to the correct country/grid profile (make sure it's set to

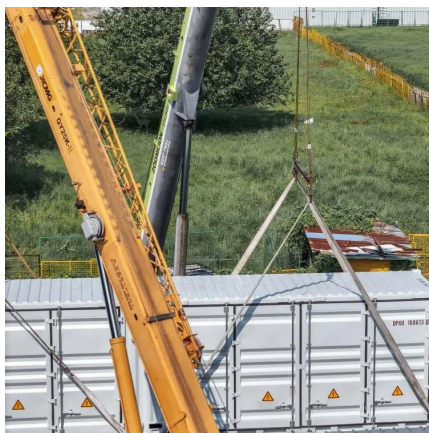


the proper utility grid standard), connecting it to the local ...



SolarEdge Home Hub Three Phase Inverter - Supported ...

The figure below shows a site where a Home Hub Three Phase Inverter is AC-coupled with an existing SolarEdge Three Phase Inverter. In addition to AC-Coupling, the SolarEdge Home ...



IQ8 Commercial Microinverter grid-tied PV system design guide

IQ8 Commercial PV system This design guide provides guidelines for designing three-phase commercial PV systems using IQ8 Commercial Microinverters. The high-powered, smart, grid ...



[Residential Smart PV Solution Quick Guide](#)

3 Cable Connections (Three-Phase Inverter M1/MB0 + ESS S0 + SmartGuard) PV strings

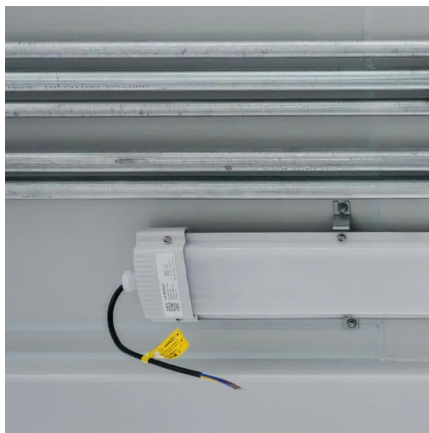




[TIGO TSS-3PS QUICK START MANUAL Pdf](#)

...

View and Download Tigo TSS-3PS quick start manual online. EI Link - Three Phase. TSS-3PS inverter pdf manual download.



EI Inverter (US) - Tigo Help Center

All Tigo EI Inverter models (3.8, 7.6, and 11.4 kW) are compatible with 208V and 240V systems. Although the EI Inverters are single-phase (split-phase, 120/240V), they can be used on a ...



CPS 3-phase String Inverter Compatible AC Connections

CPS 3-phase String Inverter Compatible AC Connections This Application Note describes the compatibility of 3-phase transformer winding configurations and the neutral connection ...



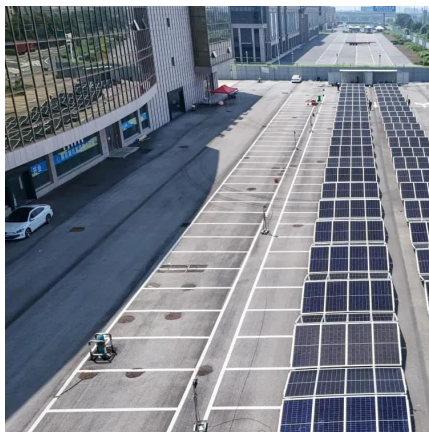
Lecture 23: Three-Phase Inverters

One might think that to realize a balanced 3-phase inverter could require as many as twelve devices to synthesize the desired output patterns. However, most 3-phase loads are ...



SolarEdge Inverter Installation Guide MAN-01-00133-1.0

When connecting multiple single phase inverters in an installation connected to a three-phase grid, phase balancing may be required by the utility or grid operator.



[Tigo EI Inverters on 208V Three Phase Service](#)

Although the EI Inverters are single-phase (split-phase, 120/240V), they can be used on a three-phase 208V AC panel. Pick two phases for the inverter two-pole breaker, and you are good to go!



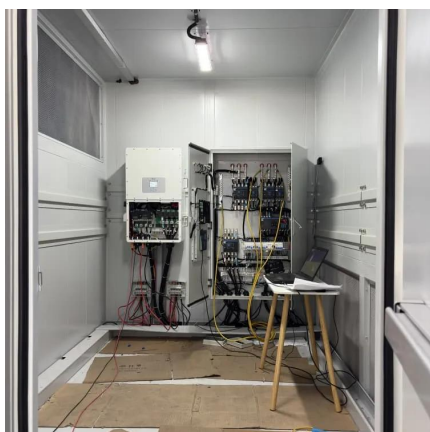


How Three Phase Solar Inverters Work : Frelit Energy Private ...

Learn how three phase solar inverters work, their benefits, price in India 2025, and why they are ideal for homes, businesses, and industries.

[3 phase grid tie inverter user manual](#)

Switch off state grid: Switch off the state grid and PV DC input before operating the inverter, to make sure that the inverter is switched off, and using the multimeter to double check the ...



[Control of Grid-Connected Inverter, SpringerLink](#)

For CSIs, three-phase configurations are considered more relevant than single-phase configurations. When the inverter functions as an integration between the DC source ...

Troubleshooting Common Issues with 3-Phase AC Coupled Hybrid Inverters

If it is always higher than the upper limit of grid reconnection voltage, the inverter will display: grid detection or grid overvoltage. Overvoltage of the power grid in the morning will ...



How To Install 3 Phase Inverter

Installing a 3 phase inverter is a process that requires a good understanding of electrical systems and components. It's an important investment in the future of your home or ...



No neutral? How does it work? , Information by Electrical ...

As some of you know I am doing a grid tied solar installation. For this installation we have a 50 KW 208 volt 3 phase inverter without a neutral.



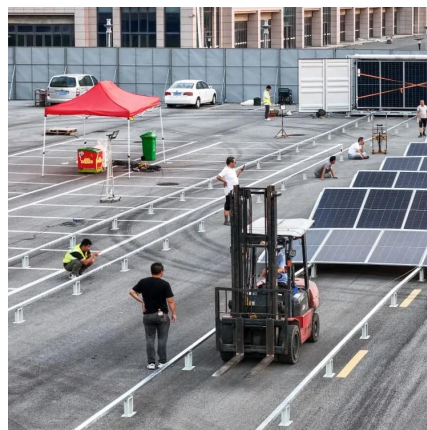
[Three Phase Inverter for North America](#)

This manual describes the installation of the Three Phase Commercial Inverter. Read this manual before you attempt to install the product and follow the instructions throughout the installation ...



Repowering a PV System with a Tigo Inverter: The Definitive Guide

This will involve setting the inverter to the correct country/grid profile (make sure it's set to the proper utility grid standard), connecting it to the local Wi-Fi network (unless using ...



[Tigo EI Inverters on 208V Three Phase Service](#)

Although the EI Inverters are single-phase (split-phase, 120/240V), they can be used on a three-phase 208V AC panel. Pick two phases for the inverter two ...

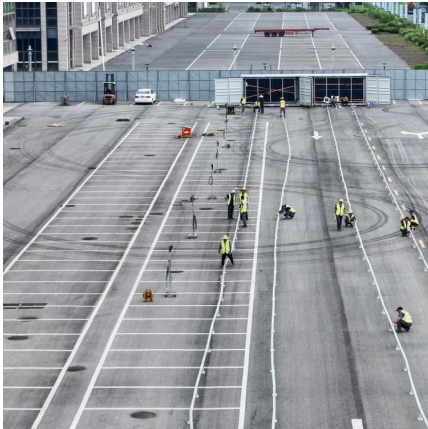
3-phase grid tie inverter installation instruction

After the previous steps of wiring, can try to start up and connect to the grid for the first time.? First, turn on the DC input switch, the input indicator light up, the LCD light up, confirm whether ...



[Quick Start Guide: EI Inverter Three Phase \(EU\)](#)

It is the communications hub and points for all grid, inverter, PV and battery connections. When paired with Tigo TS4 Flex MLPE, module level monitoring, ...



What Is A 3 Phase Solar Inverter?

Learn all you need about 3 phase solar inverters and 3 phase supply, pros & cons, and solar options for 3 phase supply.



Installation Guide

The Three Phase Inverter with Synergy Technology (referred to as 'inverter' in this manual) efficiently converts DC power from the Power Optimizers into AC power that can be fed into ...

IQ8P-3P Microinverter

The high-powered, smart grid-ready IQ8P-3P Microinverter is designed for 208Y VAC three-phase small commercial solutions. It simplifies design, improves energy harvest with higher uptime, ...





Contact Us

For catalog requests, pricing, or partnerships, please visit:
<https://www.talbert.co.za>