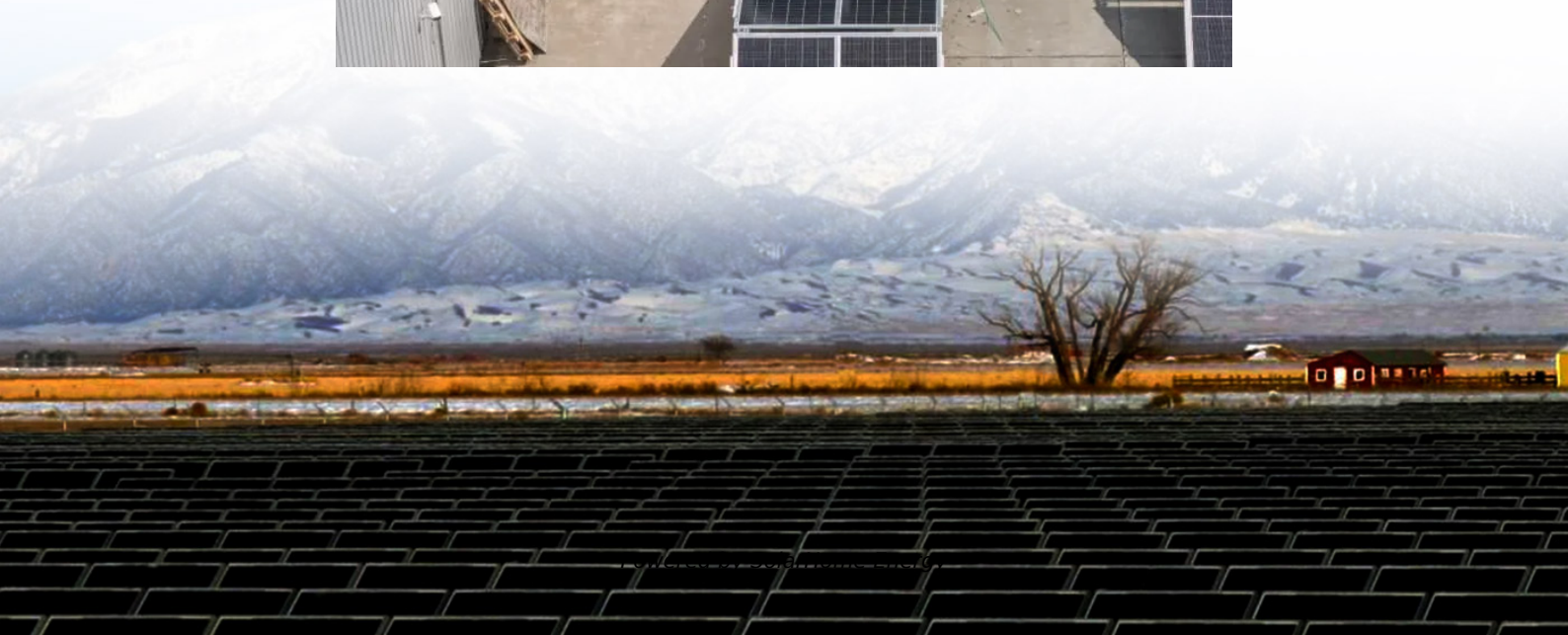


The voltage of the new energy battery cabinet is low





Overview

What does battery voltage low mean?

A 'battery voltage low' message would generally mean that the voltage has plunged below the recommended limit which the device's operation needs to be properly performing. This holds fairly significant bearing in batteries like lithium, where operating outside voltage specifications causes degradation.

Why do lithium batteries change voltage?

These changes are closely related to the battery's internal chemical reactions and physical characteristics. In the initial phase of charging, the lithium battery voltage is usually low, and as the internal chemical reactions of the battery gradually reach equilibrium, the voltage rises.

What happens if a battery is low?

According to the various battery chemistries and applications, that level varies. An alert for example on mobile phones of low battery may occur at a point of 20% charge left. The same alert in large energy storage units could lead to more serious consequences.

What is a technical low battery?

Technical low battery interpret a point of remaining charge in whole systems, which further doesn't provide stable operation. According to the various battery chemistries and applications, that level varies. An alert for example on mobile phones of low battery may occur at a point of 20% charge left.

What is a low battery warning?

A low battery warning is a frequent sign seen on almost all electronic devices, electric vehicles, and grid connected energy storage systems. It indicates that there is not enough energy left to continue to operate correctly. This parameter is particularly crucial in modern applications, including lithium iron phosphate (LiFePO_4) batteries.



How to reactivate battery monitoring system?

You need a trickle charge to bring the base voltage back in the battery. The battery monitoring system will reactivate once the base voltage is fixed. When the battery gets too low for charging, you must refrain from using high-amp or fast-charging methods. These methods can cause thermal faults or cell imbalances.



The voltage of the new energy battery cabinet is low

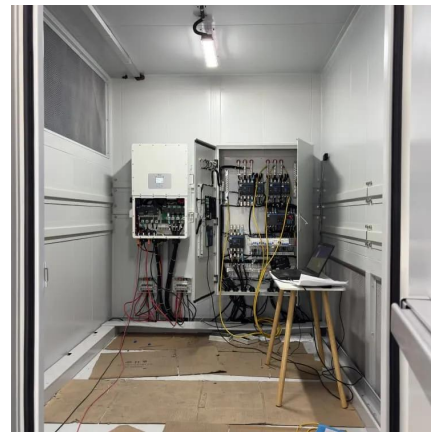


[Coslink Digital Energy Technology Co., Ltd.](#)

Jul 23, 2024 Another Exemplary Project Delivered! Recently, COSLINK installed a 125kW/215kWh energy storage system at a site in Dongguan for a local ...

LV-Rack-30KWh Cabinet type battery energy storage ...

Low Voltage 51.2V 700Ah 35KWh Rack Home Energy Storage System Lithium Battery Modular Models Cabinet Installation Stackable battery energy storage ...



How many volts is the energy storage battery cabinet?

The voltage of an energy storage battery cabinet significantly impacts both its capacity and durability. Higher voltages enable systems to store more energy efficiently and ...

[Cabinet Type Low Voltage Battery Pack](#)

Guangdong Felicity New Energy Co., Ltd. Solar Storage System Series Cabinet Type Low Voltage Battery Pack. Detailed profile including pictures



and ...



Low Battery voltage and no storage

This kept my battery working at a lower charge rate until the installer could replace the switch. At this time, you may have to wait until tomorrow for your solar generation to start ...



Pylontech Low Voltage System Outdoor Cabinet PYL.WD1380-LV

Pylontech Low Voltage System Outdoor Cabinet with IP65 rating suitable for indoor and outdoor applications. Features: Fits 4 x US5000 batteries, 6 x US3000 or 8 US2000 US2500 24V ...



Used New Energy Battery Cabinet Single Battery for sale. ABB ...

Search for used new energy battery cabinet single battery. Find ABB, Schneider Electric, Siemens, and Thermo Fisher Scientific for sale on Machinio.





Low Battery Voltage (With Charger Trouble)

Possible causes of this issue include: This can occur after several years of use as batteries degrade. Mixing different battery brands or using batteries of the same brand but with ...



How many V does the energy storage battery cabinet ...

The energy storage battery cabinet typically has a voltage rating that aligns with the requirements of the application and the configuration of the ...

High Voltage Battery Cabinet: Reliable Energy Storage

Selecting the right High Voltage Battery Cabinet is a critical decision that impacts the efficiency, safety, and longevity of any renewable energy installation. The diverse product ...



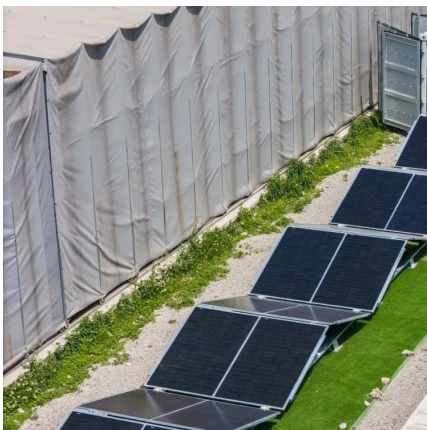
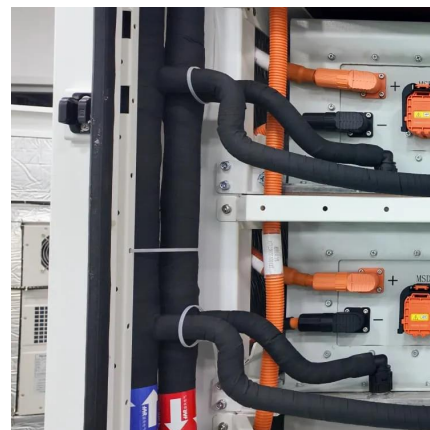
What is the voltage of the energy storage battery cabinet?

The voltage of energy storage battery cabinets typically ranges from 12V to 800V, influenced by application requirements, technology used, and the configuration of battery cells.



High Voltage Battery Cabinet: Innovative Energy Storage

As the world transitions towards renewable energy sources like solar and wind, the need for reliable and efficient power storage has never been more critical. At the core of this ...



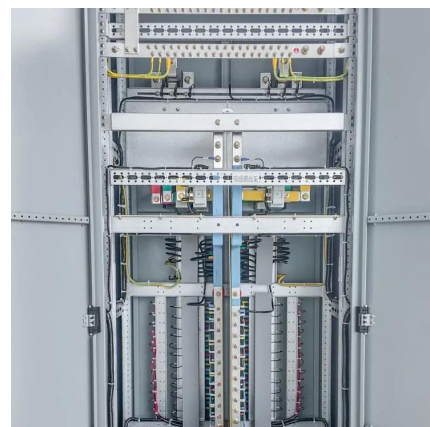
Pylontech , Energy Storage Cabinet , IP55 Outdoor ...

Pylontech Low Voltage Energy Storage Cabinet / Enclosure with IP55 rating suitable for indoor and outdoor battery storage applications. Features:

...

Why Your Energy Storage Battery Supply Voltage is Low - And ...

Ever noticed your energy storage system acting like a grumpy toddler at naptime? That "low supply voltage" alert essentially means your battery needs a juice box - pronto!





SmartGen HBMS100 Energy storage Battery cabinet

It forms a perfect small and medium-sized distributed energy storage system with PCS that is widely used in industry and commerce, family and other power ...

Low Battery Problems? Common Causes and Quick ...

A ' battery voltage low ' message would generally mean that the voltage has plunged below the recommended limit which the device's ...



Low Voltage Rack Mounted Battery

Introducing our most advanced rack/cabinet energy storage lithium battery, designed to revolutionize energy storage solutions for a variety of applications. ...



Battery Cabinet , Pylontech , Outdoor IP55 Floor ...

The Pylontech Outdoor Cabinet is the perfect solution for housing your Pylontech Low Voltage Energy Storage systems. This cabinet may also be used for the ...



Battery voltage low

Hi I have Giv-AC3.0 & 2 x 8.2 kWh battery, that since Saturday morning has been stuck in idle due to a battery voltage low fault, I have tried to reset the system but to no avail, I ...



Analysis of lithium battery voltage and its influencing ...

In the initial phase of charging, the lithium battery voltage is usually low, and as the internal chemical reactions of the battery gradually reach equilibrium, the ...



Low battery notification while it does not appear low

Hi, I am getting alarm low battery voltage, which then stops the operation. When I check the battery it's voltage does not appear to be low or discharged to a level that is alarming.





Analysis of lithium battery voltage and its influencing factors

In the initial phase of charging, the lithium battery voltage is usually low, and as the internal chemical reactions of the battery gradually reach equilibrium, the voltage rises.

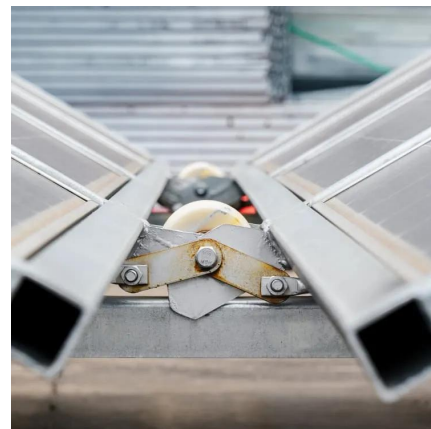


Low Battery Problems? Common Causes and Quick Solutions

A ' battery voltage low ' message would generally mean that the voltage has plunged below the recommended limit which the device's operation needs to be properly ...

Pytes Energy Storage System-home battery storage ...

There Exist An Excellent Residential Battery Manufacturer Which Produces Home Energy Storage Systems And Home Battery Storage,Welcome To Buy ...



The voltage of the new energy vehicle's battery cell is low.

If your automobile's cell voltage is low, it is recommended to first check the battery's charging status. If the charging is normal, then professional technicians may be needed to inspect and ...



Contact Us

For catalog requests, pricing, or partnerships, please visit:
<https://www.talbert.co.za>