

**The larger the wattage of the
solar panel the**





Overview

What is a high wattage solar panel?

These high-wattage panels are primarily designed for commercial and major utility projects and might not be readily available to the general consumer. For large commercial tasks, solar panels of 500 watts or higher are common. Meanwhile, for residential setups, the highest wattage solar panels typically range between 400 and 500 watts.

How many watts is a solar panel?

For residential solar, most panels are in the range of 290-400 watts. Efficiency - This watt rating can be converted into a metric showing the efficiency of the panel which takes into consideration the total size of the panel and the watt rating. Most panels are somewhere between 15-21% efficient.

Which solar panel has the highest Wattage?

The Sol Voltaics panel has a wattage of 700w, making it the solar panel with the highest wattage currently available. However, several competitors like TrinaSolar, Jinkosolar, and Canadian Solar are releasing panels with comparable wattages. All of these panels are commercial panels.

Why do solar panels have a higher wattage?

Higher Wattage: Larger panels can accommodate more solar cells, leading to higher wattage. Space Requirements: These panels require more roof space, making them less suitable for small roofs or areas with space constraints. 2. Smaller Panels Lower Wattage: Smaller panels have fewer cells, resulting in lower wattage.

What does wattage mean on a solar panel?

Definition: Wattage refers to the amount of electricity a solar panel can produce under standard test conditions (STC), typically measured in watts (W). Significance: Higher wattage panels produce more electricity, which can



be especially beneficial in systems with limited roof space or for those looking to maximize energy output.

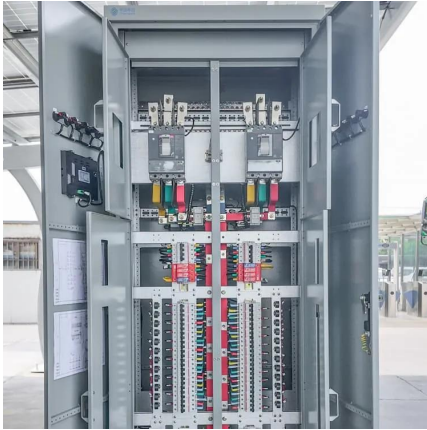
What is the difference between a large and a small solar panel?

Larger Panels: Generally, larger panels can house more solar cells, leading to higher wattage. However, they require more space and may not be suitable for all installations. **Smaller Panels:** While more compact, smaller panels usually have lower wattage, but they can be useful in tight spaces or for small-scale applications.

3. Efficiency



The larger the wattage of the solar panel the

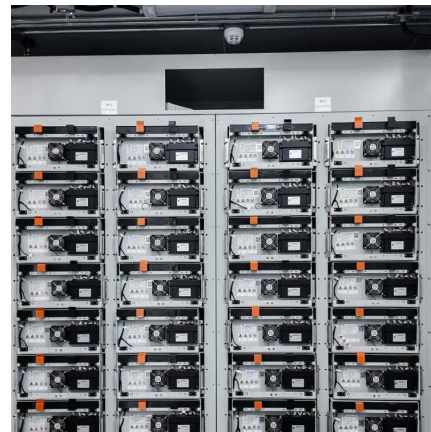


Top 7 Best 400-Watt Solar Panels in 2025 (Cost, ...

In this EcoWatch guide on 400-watt solar panels, you'll learn: What are the best 400-watt solar panels? How much can a 400-watt solar ...

What Is The Highest Wattage Solar Panel?500W

In summary, 500W solar panels are the highest wattage models currently available in the market, and they come with a range of features and benefits ...



Solar Panel Wattage and Size: How Many Panels Do ...

Wattage is the heartbeat of your solar panels--it determines how much electricity each panel produces. But what does wattage really mean? It's ...

Low Wattage Solar Panels (How To Choose)

When it comes to solar panels, many people may mistakenly believe that bigger is better, and this



is not the case - as it is with most other ...



Most powerful solar panels 2025

Here, we list the most powerful panels and look at the benefits of using larger format panels on utility-scale solar farms and commercial solar systems.



How to Choose the Best Highest Wattage Solar Panels for Your ...

Standard residential solar panels typically have a wattage rating ranging from 250 to 400 watts per panel. However, there are also higher-wattage panels available with ratings ...



[Solar Panel Sizes & Dimensions UK \(2025\)](#)

Solar Panel Sizes UK Key Points: Solar panels come in different sizes, ranging from small ones used in portable devices to large ones used in ...





Standard Solar Panel Sizes And Wattages (100W-500W ...

To bridge that gap of very useful knowledge needed, we have compared and averaged the sizes of 100-watt to 500-watt solar panels available on the market. The goal here is to get to the ...



[Solar Panel Dimensions Sizes and Wattage](#)

Intended for large-scale installations, these panels offer greater power (up to 500 watts) and larger dimensions (approximately 2 m x 1 m). It is ...

Highest Watt Residential Solar Panels 2025 [Complete Guide]

Space Efficiency Drives Value: High-wattage panels (550W+) are most cost-effective for homes with limited roof space, providing up to 30 square feet of space savings ...



Choosing Solar Panel Wattage

Wattage - All panels are given a watt rating which tells you how much energy your panel will generate in an hour of direct sunlight. For residential solar, most panels are in the ...



Do Solar Panel Sizes Actually Matter? , Facts You Should Know

The larger a solar panel, the more wattage it can produce. In a later section, we'll tell you just how to calculate how much energy you'll need to replace your current energy source so that you

...



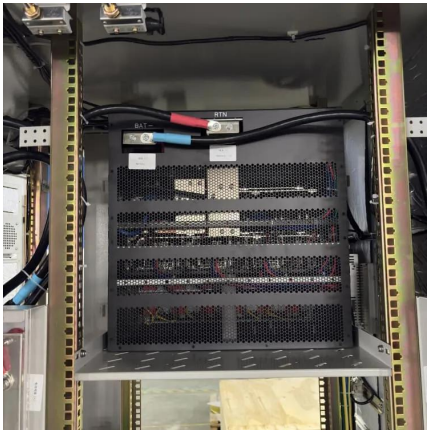
We Analyzed 100 Solar Panels: Dimensions, Efficiency, & Load

Most solar panels fall within a length range of 67.8 to 93.9 inches and a width range of 39 to 51.3 inches. Lower wattage panels tend to be on the smaller end of these ranges, while higher ...

Solar Panel Sizes And Wattage , Sizing, Dimensions & Weight

The size or dimensions of the solar panels, measured in height by width, will determine the number of solar panels that will fit on your roof and the wattage of solar panels ...



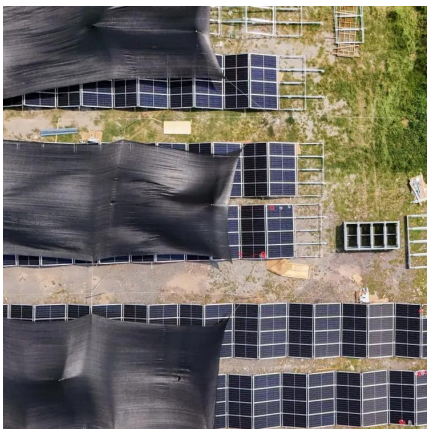


Most Powerful Solar Panels UK (2025)

High-watt solar panels generate more energy thanks to their larger size, but the most powerful models are typically only suitable for commercial ...

Choosing Solar Panel Wattage

Wattage - All panels are given a watt rating which tells you how much energy your panel will generate in an hour of direct sunlight. For ...



[Standard Solar Panel Sizes And Wattages \(100W ...](#)

To bridge that gap of very useful knowledge needed, we have compared and averaged the sizes of 100-watt to 500-watt solar panels available on the ...

Highest Watt Residential Solar Panels 2025 [Complete Guide]

The highest wattage residential solar panels available in 2025 reach up to 670 watts for commercial-sized residential applications, with standard residential formats typically ...



[What Is The Highest Wattage Solar Panel?500W](#)

In summary, 500W solar panels are the highest wattage models currently available in the market, and they come with a range of features and benefits that make them an ideal choice for those ...



Highest Wattage Solar Panels:Everything You Need to Know

Does a highest wattage solar panel offer the most value to a buyer? Here is everything you to know about the highest wattage solar panels.



[Highest Watt Solar Panel - \(Available 700w!\)](#)

What is the Largest Wattage Solar Panel? The most considerable wattage available in solar panels is the Newt@n by Risen, an upcoming commercial solar ...





20+ Most Powerful Highest Watt Solar Panels

For large commercial tasks, solar panels of 500 watts or higher are common. Meanwhile, for residential setups, the highest wattage solar panels typically range between ...



Choosing Solar Panel Wattage

Higher wattage means more energy is being generated. So, the best system has the highest watt panels, right? Not so fast. With solar, it is crucial to consider price per watt ...

What Is The Highest Wattage Solar Panel Available?

This guide will explore the concept of solar panel wattage, compare different types of panels, and discuss the impact of panel size and efficiency on achieving maximum wattage.



The 9 most powerful solar panels [2025]

Here are the most powerful solar panels currently available, with all the analysis you need to pick the best model for your home.



[Highest Watt Solar Panel - \(Available 700w!\)](#)

What is the Largest Wattage Solar Panel? The most considerable wattage available in solar panels is the Newt@n by Risen, an upcoming ...



[How to Choose the Best Highest Wattage Solar ...](#)

Standard residential solar panels typically have a wattage rating ranging from 250 to 400 watts per panel. However, there are also higher ...

The Complete Off Grid Solar System Sizing Calculator

Step 2: Calculate the Wattage of the Solar Panel Array The size, or Wattage, of your solar panel array depends not only on your energy needs but ...





[Are Bigger Solar Panels Better? ? 7 Great Points](#)

To have a solar panel which can produce a large number of watts, it has to be bigger as it will need more face space to attract the sunlight to the cells. This ...

Contact Us

For catalog requests, pricing, or partnerships, please visit:
<https://www.talbert.co.za>