

The functions of the power cabinet of the communication base station are





Overview

What is a base station power cabinet?

The base station power cabinet is a key equipment ensuring continuous power supply to base station devices, with LLVD (Load Low Voltage Disconnect) and BLVD (Battery Low Voltage Disconnect) being two important protection mechanisms in the power cabinet.

What are the functions of a base station?

2. Antenna: The base station has one or more antennas to transmit and receive signals. Antennas are responsible for radiating the signals into the air and capturing the signals from the air. 3. Baseband processing unit: It is responsible for processing the signals received from the transceiver.

Why are base stations important in cellular communication?

Base stations are important in the cellular communication as it facilitate seamless communication between mobile devices and the network communication. The demand for efficient data transmission are increased as we are advancing towards new technologies such as 5G and other data intensive applications.

What is a signal transmission & reception base station?

Signal Transmission and Reception Base stations use antennas mounted on cell towers to send and receive radio signals to and from mobile devices within their coverage area. This communication enables users to make voice calls, send texts, and access data services, connecting them to the wider world.

What are the components of a base station?

Power Supply: The power source provides the electrical energy to base station elements. It often features auxiliary power supply mechanisms that guarantee operation in case of lost or interrupted electricity, during blackouts. Baseband



Processor: The baseband processor is responsible for the processing of the digital signals.

What is a mobile base station?

Base Station generally refers to the “public mobile communication base station”, (abbr.: BS), the base station is used to provide signals to mobile phones. It usually consists of the following four parts: Antenna-Feeder System Responsible for signal transmission and reception, including antennas and feeders.



The functions of the power cabinet of the communication base station

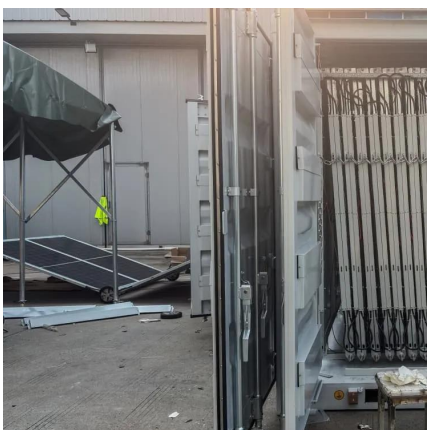


Introduction of base station and Remote Radio Unit

Base Station, generally refers to the "public mobile communication base station", (abbr.: BS), the base station is used to provide signals to mobile phones. It usually consists of ...

LLVD & BLVD in Base Station Power Cabinets

The base station power cabinet is a key equipment ensuring continuous power supply to base station devices, with LLVD (Load Low Voltage Disconnect) and BLVD (Battery Low Voltage) ...



Base Stations and Cell Towers: The Pillars of Mobile ...

Base stations and cell towers are critical components of cellular communication systems, serving as the infrastructure that supports seamless ...

Base Station Cabinet: 3 Compartments Outdoor ...

The base station cabinet can support the communication power system, cable distribution



system, battery system, temperature control system, etc. It has ...



What are the functions and differences between AAU and RRU in ...

This base station is also called a distributed base station, and the baseband part is called BBU., and the radio unit is called RRU. At first, the RRU was hung on the wall of the ...

Base station cabinets

Types of Base Station Cabinets A base station cabinet is a device that stores and secures telecommunications equipment. These robust and weather-resistant cabinets protect sensitive ...



Base station

In radio communications, a base station is a wireless communications station installed at a fixed location and used to communicate as part of one of the ...



LLVD & BLVD in Base Station Power Cabinets

The base station power cabinet is a key equipment ensuring continuous power supply to base station devices, with LLVD (Load Low Voltage Disconnect) and ...



BSC (base station controller)

Introduction: In cellular telecommunications, a Base Station Controller (BSC) is a critical component of a GSM (Global System for Mobile Communications) network, which ...

Working principle of llvd and blvd in base station power cabinet

IntroductionIn modern communication networks, base stations, as core infrastructure, are crucial for stable operation. The base station power cabinet is a key equipment ensuring continuous ...



Communication base station Telecom integration outdoor cabinet ...

The size and configuration of the telecommunication integrated outdoor cabinet, according to the functions used, the telecommunication integrated outdoor cabinet of the telecommunication ...



Base Stations and Cell Towers: The Pillars of Mobile Connectivity

Base stations and cell towers are critical components of cellular communication systems, serving as the infrastructure that supports seamless mobile connectivity. These ...

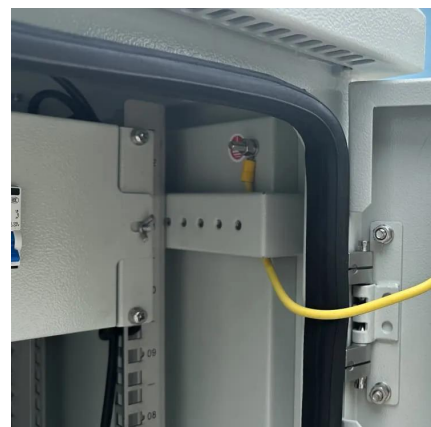


What is a Base Station Cabinet

A base station cabinet protects telecom equipment, ensures stable power, cooling, and security, and supports 4G, 5G, IoT, and emergency networks.

Outdoor cabinet-Integrated cabinet

The integrated cabinet for base station is a special cabinet to provide installation space and uninterrupted power supply for communication base station and its related equipment, which ...





Pole-Type Base Station Cabinet , Efficient Energy Solutions for

The Pole-Type Base Station Cabinet is an intelligent highly integrated hybrid power system, combining the communication base station problems with reliable energy. It integrates the ...

What is the function of a Base Transceiver Station (BTS) in GSM?

A Base Transceiver Station (BTS) is a fundamental component in a GSM (Global System for Mobile Communications) network, serving as the access point for mobile devices ...



What is a 5G base station?

A 5G Base Station, also Known as A GNB (Next-Generation NodeB), is a fundamental component of the fifth-generation (5G) Wireless ...

Base stations and mobile networks

Base station Mobile network A mobile network is made up of many base stations that each provide coverage in its surrounding area.



Analyze the Types of Communication Stations , SpringerLink

Regarding the base station architecture, Fig. 2.3 illustrates the several power-consuming elements which are included within a typical base station cabinet. Firstly, we will ...



Base Stations

They come in various types such as omnidirectional or sector antennas responding to diverse coverage needs. Controller and processor: ...



Base Stations

They come in various types such as omnidirectional or sector antennas responding to diverse coverage needs. Controller and processor: These components manage the ...





Base transceiver station

Provides transmission and reception of signals. It also does sending and reception of signals to and from higher network entities (like the base station controller in mobile telephony). This can

...



What Is the Role of a Base Station in Wireless Communication?

Base stations are the backbone of wireless communication networks, playing a pivotal role in signal transmission, network reliability, and high-speed data connectivity.

BS (Base Station)

A base station (BS) is a key component of modern wireless communication networks, providing the interface between wireless devices

...



[How do communication base stations work](#)

Communication base stations, or cell towers, are vital for wireless networks. They consist of antennas, transceivers, controllers, and power supplies to transmit and receive signals.



What is a Base Station Cabinet

A base station cabinet protects telecom equipment, ensures stable power, cooling, and security, and supports 4G, 5G, IoT, and emergency ...



What Is A Base Station?

A base station is an integral component of wireless communication networks, serving as a central point that manages the transmission and reception of signals between ...

Contact Us

For catalog requests, pricing, or partnerships, please visit:
<https://www.talbert.co.za>