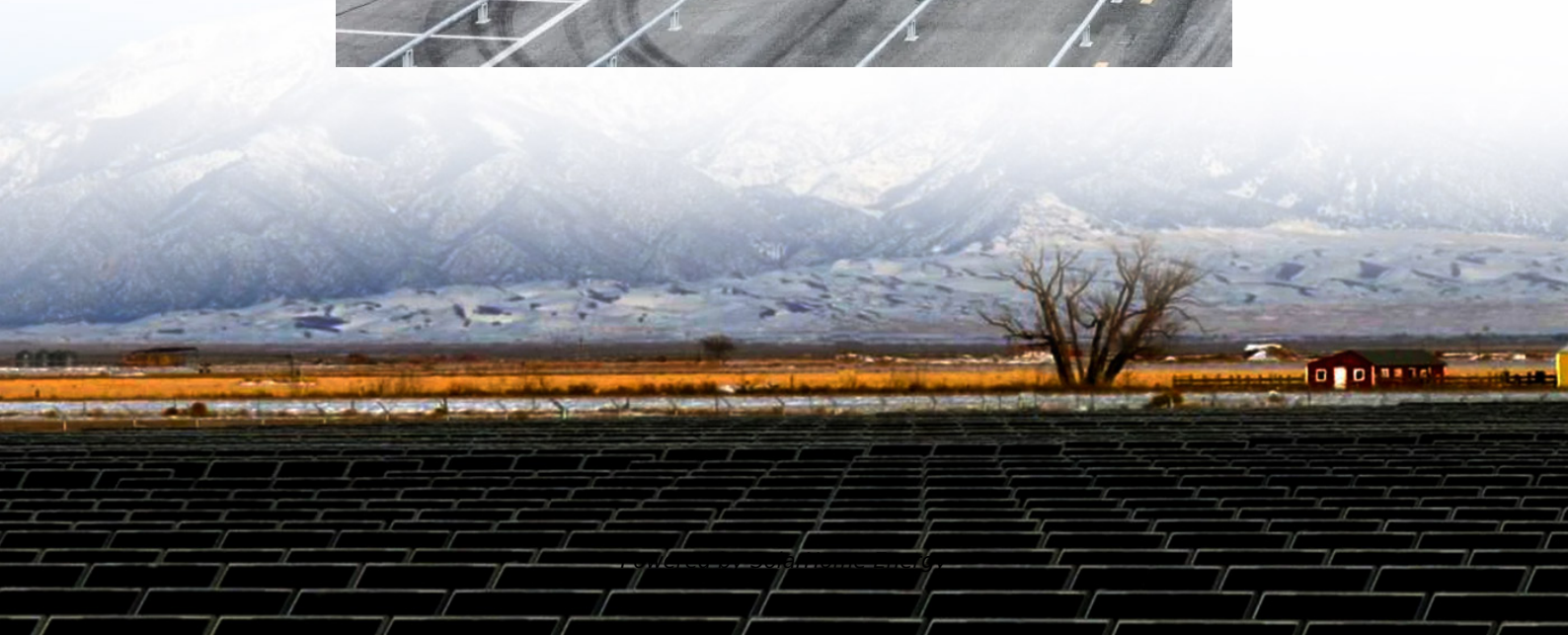


The function of base station power charging module





Overview

Its primary function is to convert alternating current (AC) from the grid into direct current (DC) suitable for battery charging. What is the function of charging module in electric car charger?

Charging module plays the role of converting AC power to DC power in DC charging station, which is related to the overall performance of EV electric car charger and charging safety. The charging cable is the vital connection between the charger and the electric vehicle.

What is a charger module?

A charger module plays a critical role in managing the charging process in electronic devices with rechargeable batteries to ensure safe and efficient replenishment. It is used for smartphones, laptops, electric vehicles, and other portable electronics.

What is a charging station unit?

Charging Station Unit: At the heart of every charging station lies the charging station unit, housing a constellation of critical components. This unit encompasses power electronics, communication modules, and safety mechanisms.

What is a power module in a DC EV charging station?

The power module typically consists of a power management module, controller, AC-DC converter, filter, communication module, and sensors. The power module is the most critical and costly part of the DC EV charging stations, determining its efficiency and stability.

How does a battery charger work?

Temperature is a main indicator of battery health, and a charger module is equipped with temperature sensors to monitor the battery's temperature while charging. If the battery becomes overheated during the charging



process, the charger module lowers the charging Current or even stops the charging process to protect the batteries.

How a charging module works?

The software algorithm of the controller acts on the semiconductor power switches through the driving circuit, thereby controlling the output voltage and current of the charging module to charge the battery pack. This process involves a high technical threshold. 3. Advantages of Modern Charging Modules



The function of base station power charging module

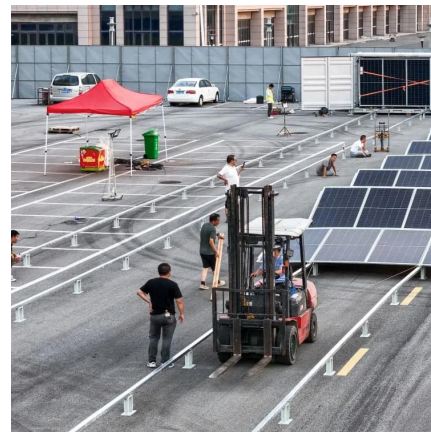


Reliable Solutions for Efficient base station power module in ...

Functions and Features of Portable Power Stations base station power module boast a range of functions and features that enhance their usability and convenience. These units typically offer ...

What are the Components of an EV Charging Station?

The charging cable connects the charging station to the vehicle. It is designed to handle the specific voltage and current levels required for safe and efficient charging.



EV Power Electronics: Purpose of Key Components

Discover the significance of power electronics in electric vehicles, including the role and primary functions of individual EV powertrain components.

What Are The Main Components Of EV Chargers

Charging module plays the role of converting AC power to DC power in DC charging station, which



is related to the overall performance of ev electric car charger and ...

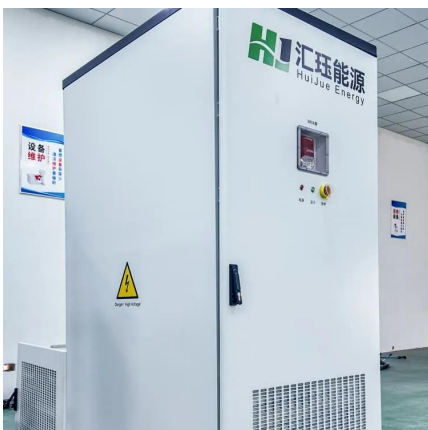


The Business Essentials: Components of Electric ...

At the heart of every charging station lies the charging station unit, housing a constellation of critical components. This unit encompasses power ...

The Heart of EV Chargers: A Technical Guide to Charging Modules

The charging module is the core component of new energy vehicle DC charging equipment, serving as the fundamental unit for power conversion processes such as ...



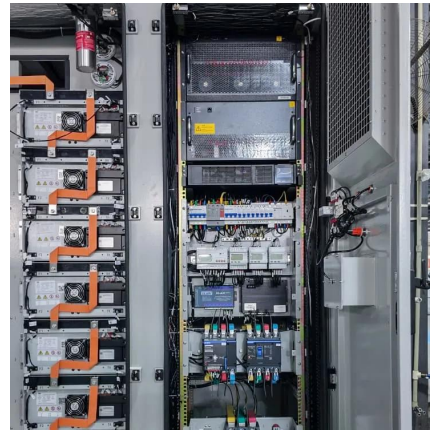
Basestation

Also, when base stations are being tested, base station functions can usually be controlled automatically by a computer so that the necessary test conditions are established. If the ...



[MicroDock II Dock Calibration System Order Info](#)

One demand flow regulator must be ordered separately for each gas cylinder used with the system. Systems with one or more charging modules require one additional charging power ...

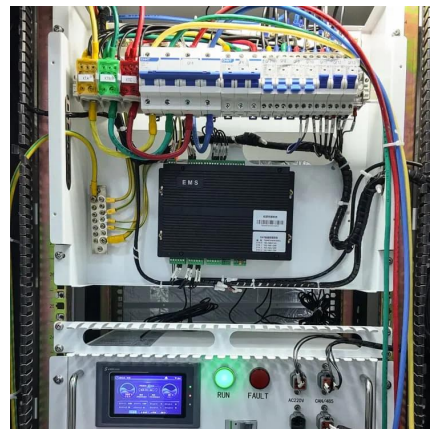


Why Is a Charging Module Used?

The charging module works by taking in AC power from the grid and converting it to DC power using a rectifier. The DC power is then ...

[DC EV Charging Stations: Essential Parts Explained](#)

The DC EV charging station's power supply module needs to receive input power, typically alternating current (AC), which is then converted ...



[Design of a Qi Wireless Charging Device](#)

A Guide to Engineering Considerations The Qi (pronounced Chee) wireless power transfer standard, based on the Wireless Power Consortium (WPC) Power Class 0 specification, has ...



What is a EV Charging Module? What is power module in DC EV ...

A power module is an integral component in the EV charging infrastructure -including the MIDA Power Unit, MIDA power Station Charger and MIDA power Movable ...



Telecommunication base station system working principle and ...

Operational principle The ESB-series outdoor base station system utilizes solar energy and diesel engines to achieve uninterrupted off grid power supply. Solar power ...

Charging System , Components, Function, Working ...

Charging System , Components, Function, Working Principle, Diagnosis Tips Vehicle is equipped with many electrical devices to drive safely and ...



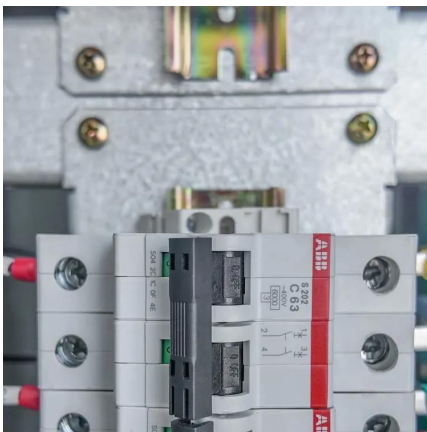


What Are The Main Components Of EV Chargers

Charging module plays the role of converting AC power to DC power in DC charging station, which is related to the overall performance of ev ...

Boost EV Charging with Kempower's 600 kW Power ...

The Power Module V2 supplies the Kempower Station Charger, and the Kempower Power Unit providing charging power to the charging outputs of the ...



Power Base Station

Base station power refers to the output power level of base stations, which is defined by specific maximum limits (24 dBm for Local Area base stations and 20 dBm for Home base stations) ...

PAPER OPEN ACCESS Design of base station backup ...

In view of the characteristics of the base station backup power system, this paper proposes a design scheme for the low-cost transformation of the decommissioned stepped power battery ...



Key Components of EV Charging

The charging module, also known as the power module, is the "heart" of the charging station, accounting for about 50% of the hardware cost of the charging station, and ...



Wireless Charging; Types, Benefits, Applications, and ...

What is Wireless Charging? Wireless charging is a technology in which one electronics device is charged without using any wire or cables. This ...



What Does a Battery Charger Module Do? Key Functions Explained

A charger module plays a critical role in managing the charging process in electronic devices with rechargeable batteries to ensure safe and efficient replenishment.



Are You On-board? Demystifying EV Charging Systems

A DC charging (pile) station has the same properties as an onboard charger module except that the AC/DC PFC stage and isolated DC/DC stage are off-board and integrated into the station. ...



[DC EV Charging Stations: Essential Parts Explained](#)

The DC EV charging station's power supply module needs to receive input power, typically alternating current (AC), which is then converted into direct current (DC) to supply the ...

Why Is a Charging Module Used?

The charging module works by taking in AC power from the grid and converting it to DC power using a rectifier. The DC power is then regulated and smoothed out using ...



[DC EV Charging Stations: Essential Parts Explained](#)

Discover the core components of DC EV charging stations and their functions. Get an in-depth look at what powers efficient EV charging.



What are the Components of an EV Charging Station?

The charging cable connects the charging station to the vehicle. It is designed to handle the specific voltage and current levels required for safe and efficient ...



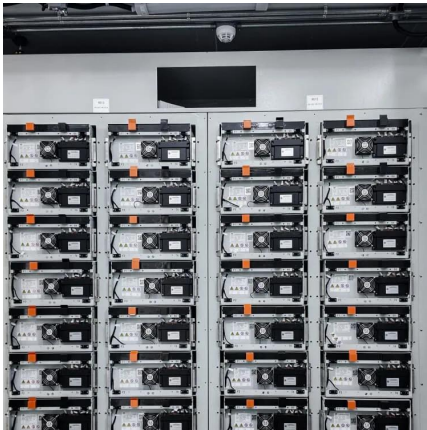
The Business Essentials: Components of Electric Vehicle Charging Stations

Functionally, it orchestrates the flow of electricity, establishes communication with the EV, and safeguards the charging process, epitomizing its role as the nerve center of the ...

The Business Essentials: Components of Electric ...

Functionally, it orchestrates the flow of electricity, establishes communication with the EV, and safeguards the charging process, epitomizing ...





What Does a Battery Charger Module Do? Key ...

A charger module plays a critical role in managing the charging process in electronic devices with rechargeable batteries to ensure safe and ...

Contact Us

For catalog requests, pricing, or partnerships, please visit:
<https://www.talbert.co.za>