

The function of base station battery module





Overview

What is a base battery system?

The Base battery system is built for performance and reliability. It combines a high-capacity lithium iron battery with intelligent software to optimize energy use. The Base battery system has three main components: the battery pack, inverter, and hub. The long white unit is the battery pack. We mount the battery pack on the ground.

What is a battery module?

A battery module is essentially a collection of battery cells organized in a specific arrangement to work together as a single unit. Think of it as a middle layer in the hierarchy of battery systems. While a single battery cell can store and release energy, combining multiple cells into a module increases the overall capacity and power output.

Why do you need a battery module?

By combining multiple cells, a battery module offers greater energy capacity and output. Modules are designed to be manageable in size and complexity, making them easier to integrate into various applications, such as electric vehicles and renewable energy systems. The inclusion of a BMS and cooling system ensures safe and efficient operation.

How does a base battery work?

This process is called grid-balancing. Base batteries deploy energy to the grid faster than any other service, which is how Base is able to recoup the cost of the battery equipment and keep prices low for homeowners. The charge level of your Base battery will naturally fluctuate over time, rising and falling throughout a multi-day cycle.

What are the components of a battery module?

Part 2. Battery module composition A battery module comprises several key



components, each vital in its functionality and safety. Let's break down these components and their functions: 1. Battery Cells: The module's heart consists of individual units that store and release electrical energy. These are the primary energy storage units.

What is the difference between a battery module and a cell?

Individual cells are too small to power large devices, while entire battery packs are cumbersome to handle and maintain. Modules, however, strike the right balance, making it easier to design, assemble, and maintain complex energy storage systems. Part 2. Battery module composition



The function of base station battery module



Types of Base Stations

Base stations are one of the widely used components in the field of wireless communication and networks. It is an access point or base point of a ...

What is the Role and Function of the EMS Module in ...

In a complete BESS, BMS provides the battery's operating status information, and EMS uses this data to optimize the entire storage system's charging and ...



Base Station System Structure

However if the downloaded function requires right away any inherent base station function change (for example the air interface that links the handheld and the base station) the base station ...

What is the Battery Module?

While a single battery cell can store and release energy, combining multiple cells into a module increases the overall capacity and power output.



This modular approach allows ...



What is a base station battery module

The Pylontech BP48100 is a 48V 100Ah 4.8kWh Base Station Battery Module ideally suited for Telco towers & base stations requiring centralised backup power solutions with large capacity ...

What Does A Battery Control Module Do? Functions, ...

The battery control module (BCM) monitors battery cells using sensors for voltage, temperature, and current. It collects real-time data to ...



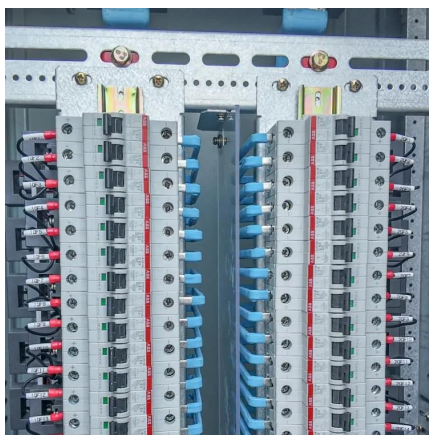
Site Energy Revolution: How Solar Energy Systems Reshape ...

Discover how solar energy is reshaping communication base stations by reducing energy costs, improving reliability, and boosting sustainability. Explore Huijue's solar solutions ...



What is a base station energy storage battery? , NenPower

Base station energy storage batteries offer vital support to enhance the stability of both telecommunications and electrical grids. During power outages or disruptions, these ...



Telecom Base Station PV Power Generation System Solution

The communication base station installs solar panels outdoors, and adds MPPT solar controllers and other equipment in the computer room. The power generated by solar energy is used by ...



What are base station energy storage batteries used for?

Base station energy storage batteries contribute to this objective by enabling more efficient energy consumption and reducing dependence on traditional electricity sources.



Modular LiFePO4 Rack Battery Storage - 20kWh to 60kWh ...

This rack battery solution features a robust battery rack structure that supports flexible deployment for homes, telecom stations, and solar energy systems. Each lifepo4 rack battery ...



What is the Battery Module?

While a single battery cell can store and release energy, combining multiple cells into a module increases the overall capacity and ...

What is the function of base station energy storage batteries

Battery Energy Storage Systems (BESS), also referred to in this article as "battery storage systems" or simply "batteries", have become essential in the evolving energy landscape, ...



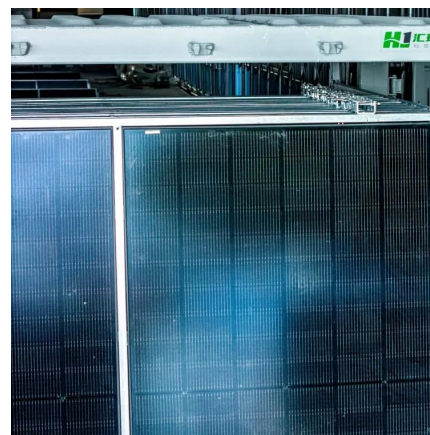


What is a Battery Module?

Essentially, a battery module bridges the gap between a single battery cell and a complete energy storage system, providing a versatile, manageable and secure solution for ...

What is the Role and Function of the EMS Module in BESS?

In a complete BESS, BMS provides the battery's operating status information, and EMS uses this data to optimize the entire storage system's charging and discharging strategy. EMS plays a ...



What is the role of a base station energy storage

Why do 5G base stations need backup batteries?
As the number of 5G base stations, and their power consumption increase significantly compared with that of 4G base stations, the demand ...

Telecommunication base station system working principle and ...

The system output load and battery charging current are provided by the solar module. If the output power of the solar module is not enough to provide all loads, it is ...



Telecom Base Station Backup Power Solution: Design ...

Discover the 48V 100Ah LiFePO4 battery pack for telecom base stations: safe, long-lasting, and eco-friendly. Optimize reliability with our ...



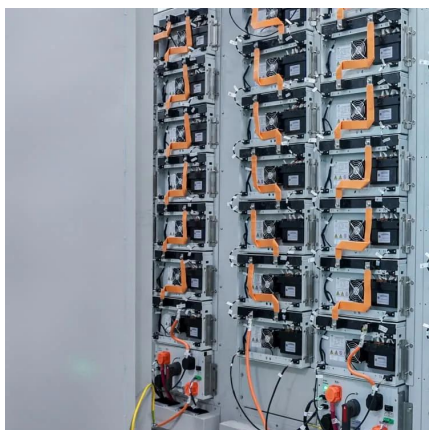
How the Base battery works: A complete guide to grid ...

Your Base battery keeps your home powered, protects against outages, and helps you use energy more efficiently. By understanding how it works and ...



[Baseband Unit \(BBU\): The Technology Behind ...](#)

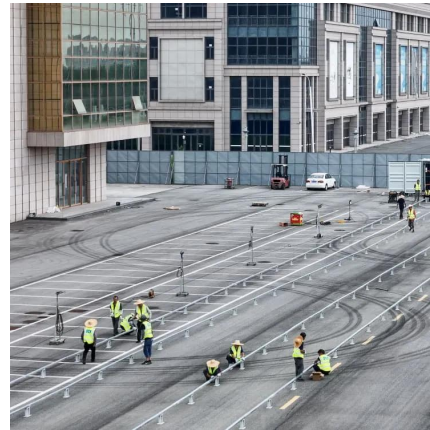
What is a Baseband Unit? An essential part of contemporary telecommunications systems, the baseband unit (BBU) processes incoming ...





What is a base station energy storage battery?

A base station energy storage battery is a crucial component of telecommunication infrastructure, designed to improve the efficiency and ...



Alarm Base Station

The control center for the Alarm, the Base Station connects to your home internet to keep your Alarm system online and connected to your mobile devices.

Ring Alarm Base Station v2 , home security , Amazon

Ring Alarm Base Station makes sure you never let your guard down with a 24-hour backup battery. After you add Alarm Sensors, sold separately, subscribe ...



How the Base battery works: A complete guide to grid ...

Your Base battery keeps your home powered, protects against outages, and helps you use energy more efficiently. By understanding how it works and preparing for outages, you can get ...



What is a Battery Module?

Essentially, a battery module bridges the gap between a single battery cell and a complete energy storage system, providing a versatile, ...

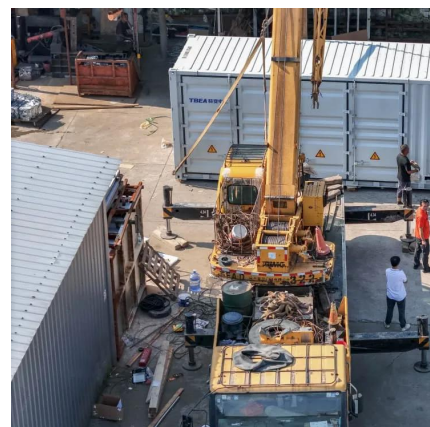


What is a base station battery module

Telecom base station battery is a kind of energy storage equipment dedicatedly designed to provide backup power for telecom base stations, applied to supply continuous and stable ...

Types and Applications of Mobile Communication ...

Distributed base stations divide traditional macro base station equipment into two functional modules according to their functions. The ...





What are base station energy storage batteries used for?

Base station energy storage batteries contribute to this objective by enabling more efficient energy consumption and reducing dependence on ...

Contact Us

For catalog requests, pricing, or partnerships, please visit:
<https://www.talbert.co.za>