

# **The angle of installing photovoltaic panels**





## Overview

---

For most homeowners, the ideal angle for a solar panel installation is close to or equal to the latitude of your home. This angle is typically between 30 degrees and 45 degrees. Doing so ensures your home will get the maximum average output from your solar power system throughout the year.



## The angle of installing photovoltaic panels

---

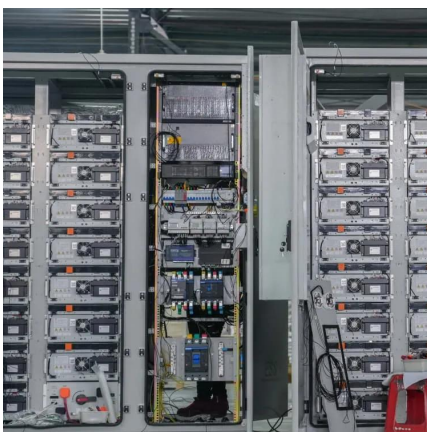
### What is the angle for installing solar panels? , NenPower

For professional installers, understanding the technical aspects of angle calculation is crucial for effective solar panel installation. Tools and technologies exist to assist in ...



### [Solar Panel Angle Calculator: The Definitive Guide](#)

Annual energy output vs panel tilt angle, for a South-facing 5 kW array in Phoenix, Arizona  
Tilting the panels significantly increases energy ...



### The Impact of Installation Angle on the Wind Load of ...

The results indicate that, under different installation angles, the windward side pressure of the solar photovoltaic panel is generally higher than ...

### Optimal Solar Panel Angle: Maximizing Efficiency and Energy ...

Discover how to choose the right angle for your solar panels based on your location and seasonal



variations. Proper orientation and tilt ensure maximum sunlight absorption, ...



## Are the optimum angles of photovoltaic systems so important?

Installation angles are essential for PV design, installation, energy and economic analysis. From the traditional point of view, PV modules are suggested to be installed at the ...

## What's the Best Angle for Solar Panels? , EnergySage

For maximum output, the sweet spot for solar panels in the continental U.S. is facing roughly south and tilted between 15 and 40 degrees, ...



## Solar Panel Angle: Definition, and How to Calculate

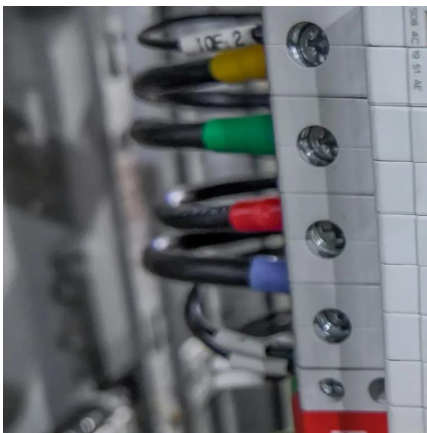
For locations in the northern hemisphere, the angle is calculated by subtracting 15 degrees from the latitude in the summer and adding 15 degrees to the latitude in the winter. ...





## How to Find the Best Orientation and Angle of Solar Panels?

Ideally, the angle of your solar panels should be equal or close to the latitude of where they are installed. As you go further north or south, the angle of the sun in the sky decreases. To ...



## Best Angle for Solar Panels: How to Maximize Sunlight

When installing solar panels, one of the most important factors to consider is the angle at which they are placed. The angle directly affects how much sunlight the panels ...

## Best Angle And Orientation For Solar Panels - Forbes Home

What is the best tilt angle for solar panels? The optimal tilt angle of photovoltaic solar panels is that the surface of the solar panel faces the Sun perpendicularly. However, the angle of incidence of solar radiation varies during the day and during different times of the year.



## Solar panel inclination angle, location and orientation

What is the best tilt angle for solar panels? The optimal tilt angle of photovoltaic solar panels is that the surface of the solar panel faces the Sun perpendicularly. However, the ...



## Solar Panel Tilt Angle Calculator

To maximize efficiency and reduce energy costs, you'll want to find the best solar panel tilt angle for your solar power system. When the sun is lower in the sky, solar panels need a greater tilt ...

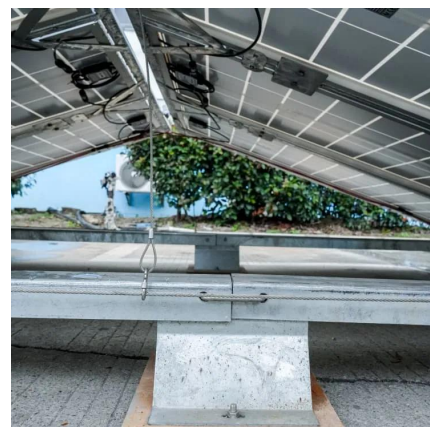


## What's the Best Angle for Solar Panels? , EnergySage

For maximum output, the sweet spot for solar panels in the continental U.S. is facing roughly south and tilted between 15 and 40 degrees, according to the Department of ...

## [Solar Orientation Calculators \[Maximize Energy ...](#)

Discover how to use a solar orientation calculator for optimal solar panel angles and tilt. Maximize efficiency and save on energy costs.





## Solar panel angle. How to calculate the angle of solar panel

Azimuth solar panel angle In basic terms, the azimuth solar panel angle, or "azimuth" for short, refers to the cardinal direction (in other words, "orientation") your ...

## What is the angle for installing solar panels? , NenPower

For professional installers, understanding the technical aspects of angle calculation is crucial for effective solar panel installation. Tools and ...

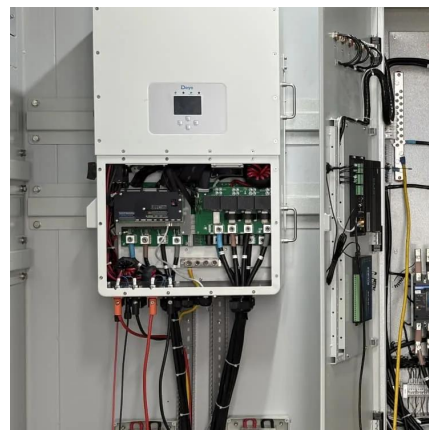


## How to Determine the Optimal Tilt Angle for Solar Panels: A Step ...

Overview The optimal tilt angle for solar panels is essential for maximizing energy production, with a general recommendation of approximately  $26^\circ$  for peak efficiency, along ...

## Why Solar Panel Angle & Orientation Matter for Maximum Efficiency

Learn why the angle and orientation of solar panels matter for maximum efficiency. Discover best practices to optimize solar energy output and reduce electricity costs.



### Solar Angle Secret: Are Your Panels Tilted Right?

Simple is the basic idea of controlling solar panel efficiency: panels generate the maximum power when sunlight strikes their surface perpendicularly, therefore ...



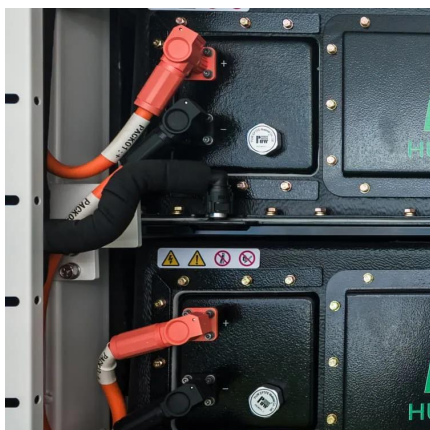
### **Optimum Tilt of Solar Panels**

The next question is, at what angle from horizontal should the panels be tilted? Books and articles on solar energy often give the advice that the tilt should be equal to your ...



### **Solar Panel Direction and Tilt Angles for the Best Harvest**

Comprehensive guide to optimising your solar energy production in the UK. Discover optimal tilt angles and seasonal adjustments for maximum ...







## Best Angle And Orientation For Solar Panels - Forbes Home

For most homeowners, the ideal angle for a solar panel installation is close to or equal to the latitude of your home. This angle is typically between 30 degrees and 45 degrees.



## How does the angle of solar panels affect their efficiency

Latitude Determines Optimal Tilt: A general rule is to set the solar panel tilt angle equal to the geographic latitude of the installation site to ...

## Installation of Photovoltaic Panels on the ground, roof, ...

Year by year, more people choose to install photovoltaic systems on their property. When opting for this form of energy generation, it is crucial to select ...



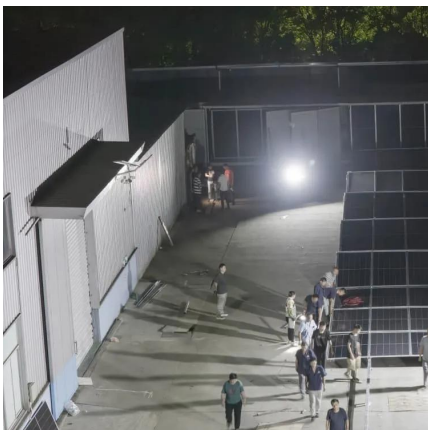
## Best Angle for Solar Panels: How to Maximize Sunlight

When installing solar panels, one of the most important factors to consider is the angle at which they are placed. The angle directly affects how ...



### Solar Angle Secret: Are Your Panels Tilted Right?

Simple is the basic idea of controlling solar panel efficiency: panels generate the maximum power when sunlight strikes their surface perpendicularly, therefore forming a direct 90-degree angle. ...



### **The best angle and direction for solar panels [UK, 2025]**

In the case of most rooftop solar panel installations, the angle is determined by the roof - and fortunately, most roofs in the UK are angled at ...

### **Optimal Solar Panel Angle: Maximizing Efficiency and ...**

Discover how to choose the right angle for your solar panels based on your location and seasonal variations. Proper orientation and tilt ensure ...





## Optimizing Solar Power Generation: A Guide to Precise Solar Panel Angle

Explore the intricate science of solar panel angle optimization for enhanced energy efficiency, uncovering the impact of tilt on production, the role of solar zenith angle, seasonal variations, ...

### Solar Panel Angle: Definition, and How to Calculate

For locations in the northern hemisphere, the angle is calculated by subtracting 15 degrees from the latitude in the summer and adding 15 ...



### Solar Panel Tilt Angle Calculator

To maximize efficiency and reduce energy costs, you'll want to find the best solar panel tilt angle for your solar power system. When the sun is lower in the sky, ...

## Contact Us

For catalog requests, pricing, or partnerships, please visit:  
<https://www.talbert.co.za>