

Standard dimensions for photovoltaic panel installation





Overview

A typical residential solar panel measures about 65 inches by 39 inches (roughly 5.4 feet by 3.25 feet), though slight variations exist between manufacturers. These standard dimensions provide approximately 15 square feet of surface area per panel.



Standard dimensions for photovoltaic panel installation



Standard Solar Panel Sizes And Wattages (100W-500W Dimensions)

To bridge that gap of very useful knowledge needed, we have compared and averaged the sizes of 100-watt to 500-watt solar panels available on the market. The goal here is to get to the ...

Solar Panel Sizes, Dimensions & Weight , Solar Choice

Standard residential solar panels contain 60 solar cells (or 120 half-cut solar cells) and typically generate anywhere from 350W to 500W of electricity. The size of these panels ...



Perfect Solar Panel Sizes for Your Home (Expert ...)

A typical residential solar panel measures about 65 inches by 39 inches (roughly 5.4 feet by 3.25 feet), though slight variations exist between ...

[Solar panel sizes and dimensions explained , FMB](#)

Solar panel size captures both a panel's power and its physical dimensions. Find out what size of



solar panel system you need with our guide.



How to Choose the Right Solar Panel Size for Your Roof Space

Find the ideal solar panel size for your roof. Learn how to match panel dimensions with roof space, sunlight, and budget for optimal performance and efficiency.



[Solar Panel Dimensions Sizes and Wattage](#)

Solar panel dimensions is an essential criterion to consider when planning a photovoltaic solar installation. So, how big is a solar panel?



Understanding Solar Panel Dimensions In 2025: A ...

Explore the most common solar panel dimensions in 2025, including residential and commercial sizes. Learn how solar panel size ...





[Standard Solar Panel Sizes and Dimensions](#)

Additionally, consider the compatibility of your solar panel system with potential upgrades or additions to ...



[Solar Panel Size And Weight: A Comprehensive Guide](#)

Learn about common dimensions, types of panels, and space requirements for residential and commercial solar systems. Find out how panel size affects energy efficiency ...

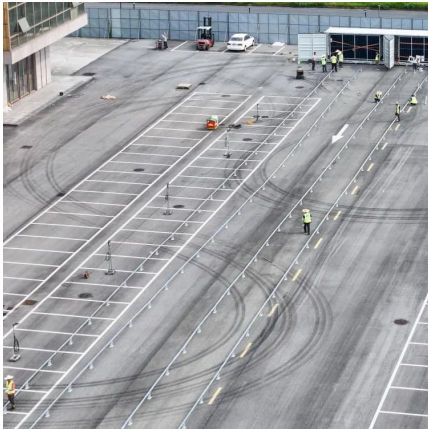
Calculate Rooftop Area for Solar Panel Installation

Navitas Solar offers a guide on calculate rooftop area for solar panels, ensuring efficient space usage and optimal solar energy generation.



Solar Panel Dimensions and Weight: A Complete Guide , Angi

Most homes use 60-cell panels that are roughly 65-by-39 inches. Depending on the brand you buy, you'll find a couple of inches of variation on either dimension. For 60-cell ...



Perfect Solar Panel Sizes for Your Home (Expert Sizing Guide)

A typical residential solar panel measures about 65 inches by 39 inches (roughly 5.4 feet by 3.25 feet), though slight variations exist between manufacturers. These standard ...

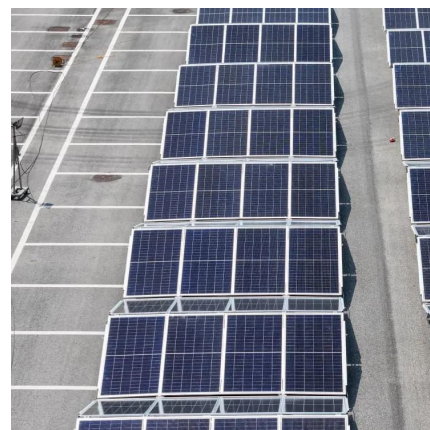


[Solar Panels Dimensions & Drawings . Dimensions](#)

Solar panels, also known as photovoltaic (PV) cells, are devices that convert sunlight directly into electricity. Each panel is made up of many ...

[Solar Panel Sizes and Wattage: A Comprehensive ...](#)

Explore our comprehensive guide on solar panel sizes and wattage to make informed decisions. Learn to choose the right solar power ...





Solar Panel Sizes, Dimensions & Weight , Solar Choice

There isn't one single answer to the question "How big are solar panels?" but the size of the solar panels you install for residential or ...

[Solar Panel Dimensions and Output and Weight](#)

When contemplating the addition of solar panels to your roof, the dimensions and effectiveness of these panels are crucial aspects to keep in ...



Understanding Solar Panel Sizes: A Homeowner's Guide

What does solar panel size really mean? Explore the dimensions, weight, and power output (watts) of different panels. Find the perfect fit for ...

Solar Panel Sizes: Choosing the Right Dimensions for Any Project

Our guide helps you pick the perfect solar panel size for any project: residential, commercial, or industrial. No more guesswork, just maximum savings.



Solar Panel Sizes, Dimensions & Weight , Solar Choice

Standard residential solar panels contain 60 solar cells (or 120 half-cut solar cells) and typically generate anywhere from 350W to 500W of ...



[Solar Panel Size And Weight: A Comprehensive Guide](#)

When considering residential solar panels, typical configurations consist of 60 cells measuring approximately 3.25 feet by 5.5 feet. These panels cover an area of 17.62 square ...



What Is the Average Size of a Solar Panel? Quick Guide

Size varies by brand: Always check specs before buying Roof space needs: ~180 sq. ft. for 10 panels Efficiency matters more than size when space is limited Standard Solar ...





[Standard Solar Panel Sizes And Wattages \(100W ...](#)

To bridge that gap of very useful knowledge needed, we have compared and averaged the sizes of 100-watt to 500-watt solar panels available on the ...



Solar Photovoltaic Panel Sizes [Full List And Other ...

Are There Multiple Sizes of Solar Panels? Yes, many solar panel sizes are available on the market, and they can vary depending on the types of solar ...

National standards for solar photovoltaic panel dimensions

What size solar panels are available? When it comes to the size of solar panels that are typically available on the market, there are three standardised cell sizes. These are: 60-cell solar ...



Understanding Solar Panel Dimensions In 2025: A Complete Size ...

Explore the most common solar panel dimensions in 2025, including residential and commercial sizes. Learn how solar panel size dimensions affect power, installation, and ...



[What Is Standard Solar Panel Size? A ...](#)

The standard solar panel size typically ranges from 65 inches by 39 inches for residential units, with most panels containing either 60 or 72 ...

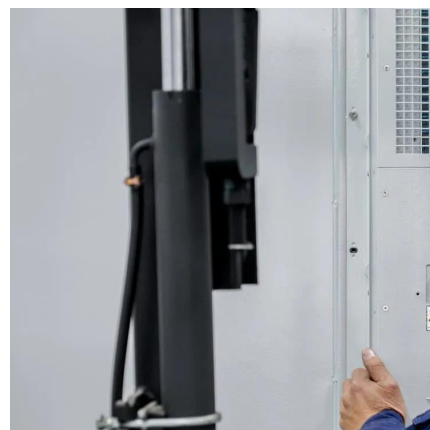


[Solar Panel Dimensions and Sizes: Complete Guide](#)

There are three main sizes of solar panels to know: 60-cell, 72-cell, and 96-cell. For commercial and residential solar panels, the 60-cell and ...

Solar Panel Dimensions: What You Need to Know Before Installation

Learn about common dimensions, types of panels, and space requirements for residential and commercial solar systems. Find out how panel size affects energy efficiency ...





[Solar Panel Dimensions and Weight: A Complete ...](#)

Most homes use 60-cell panels that are roughly 65-by-39 inches. Depending on the brand you buy, you'll find a couple of inches of variation on ...

What Is Standard Solar Panel Size? A Comprehensive Overview

The standard solar panel size typically ranges from 65 inches by 39 inches for residential units, with most panels containing either 60 or 72 cells, which significantly affects ...



Solar Panel Sizes: Choosing the Right Dimensions for ...

Our guide helps you pick the perfect solar panel size for any project: residential, commercial, or industrial. No more guesswork, just ...

[Solar Panel Dimensions and Sizes: Complete Guide](#)

There are three main sizes of solar panels to know: 60-cell, 72-cell, and 96-cell. For commercial and residential solar panels, the 60-cell and 72-cell solar panels size are most commonly used ...



What is Industrial Size Solar Panel? A Comprehensive Guide to

Proper installation and maintenance are key to maximizing the efficiency and lifespan of industrial solar panels. Understanding Industrial Size Solar Panels Key Features of ...

Contact Us

For catalog requests, pricing, or partnerships, please visit:
<https://www.talbert.co.za>