

# **Stable voltage for lithium battery pack**





## Overview

---

The nominal voltage of lithium-ion cells is typically around 3.6V to 3.7V. This is the average voltage when the battery is in a stable state, neither charging nor discharging. State of Charge (SOC) is crucial for monitoring battery health.



## Stable voltage for lithium battery pack

---

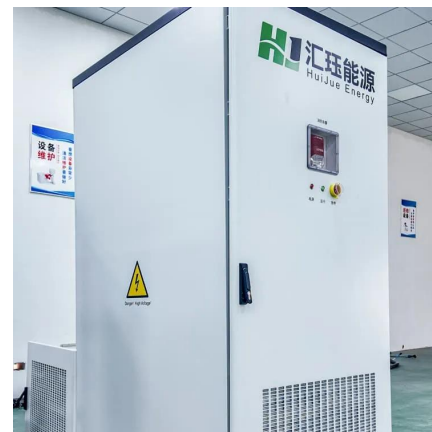


### How to Store Li-ion Batteries for Reliability & Safety

Storing lithium-ion batteries properly is crucial for both safety and longevity. Whether you're dealing with small 18650 battery packs or larger custom lithium-ion battery ...

### Improve Lithium Battery Output Using a Voltage ...

When applied to lithium batteries, a voltage regulator lithium helps ensure that the battery's voltage stays within the optimal range, preventing ...



### Lithium Ion Battery Voltage Explained: Everything You ...

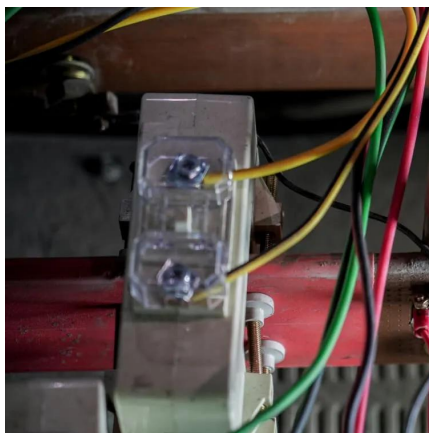
Lithium ion battery voltage range is one of the key parameters which decides the lithium ion battery performance and its safe limits. Lithium ...

### The Ultimate Guide to Lithium-Ion Battery Voltage Charts (12V, ...

Lithium-ion Battery Voltage Curve A typical lithium ion battery voltage profile is a



relationship between voltage and state of charge. When the battery is discharged and current ...

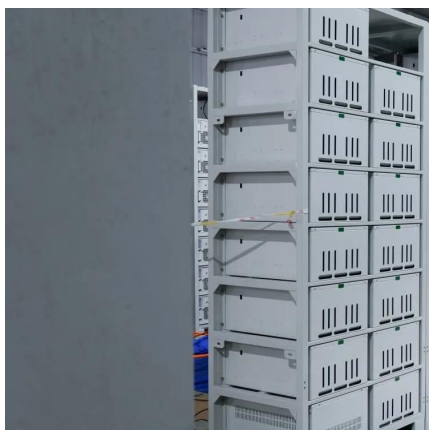


## **Lithium-Ion Battery Cell Voltage: What You Need to Know**

Lithium-ion battery cell voltage is a critical factor influencing the performance and longevity of rechargeable batteries. Typically, these cells operate at a nominal voltage of 3.6V ...

## [Lithium Battery Voltage Guide: Types, Charging](#)

Different types of lithium batteries have varying maximum charge voltages: Li-ion Batteries: Typically have a max charge voltage between 4.2 to ...



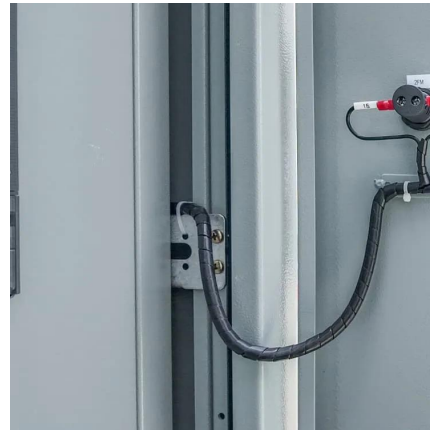
## **Comprehensive Guide to Lithium Battery Cell Voltage ...**

Understand lithium battery cell voltage during charging and discharging, including safe ranges, cutoff limits, and how voltage impacts ...



## Best way to get constant voltage supply from Li-Ion batteries? : r

I've been looking into using a single cell lithium-ion battery as a power supply in my next project. I'm pretty sure I've got the charging by USB just about figured out since there are a bunch of ...



## Ultimate Guide to Lithium-Ion Battery Voltage Chart

Different voltage sizes of lithium-ion batteries are available, such as 12V, 24V, and 48V. The lithium-ion battery voltage chart lets you determine the discharge chart for each ...

### 24V Lithium Batteries: Ultimate Guide

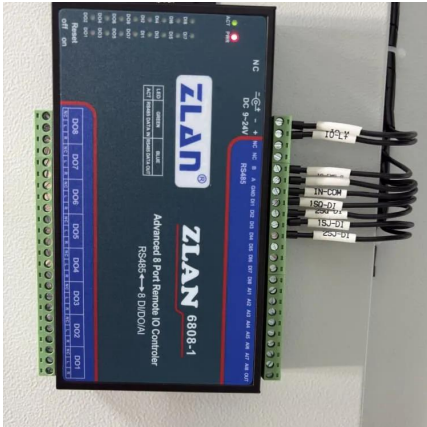
Lithium iron phosphate (LiFePO<sub>4</sub> Batteries): Known for greater thermal stability and safety, often used in applications requiring high power outputs. A 24V ...



### What Is The Lithium-Ion Battery Voltage Chart?

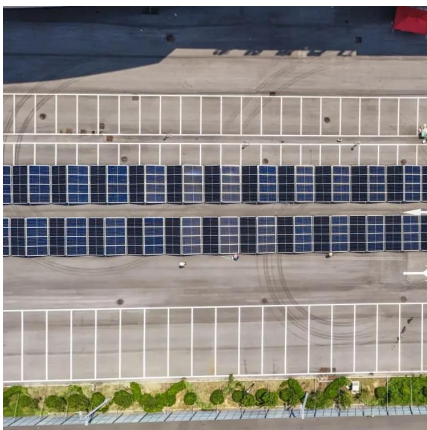
A lithium-ion battery voltage chart maps key voltage parameters against charge state and operational phases. These batteries typically operate between 3.0V (discharge ...





### Optimal Voltage for Lithium-Ion Batteries: A

This higher voltage supports greater energy storage and longer driving ranges. Why Battery Voltage Matters The voltage of a lithium-ion battery impacts several key factors: ...

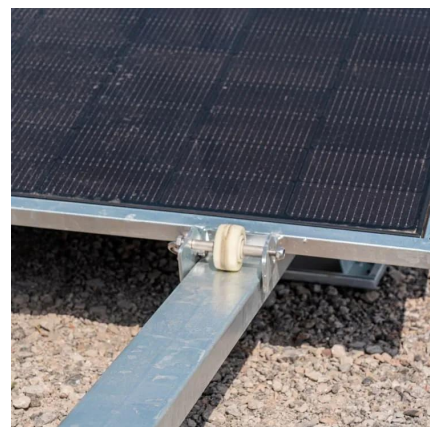


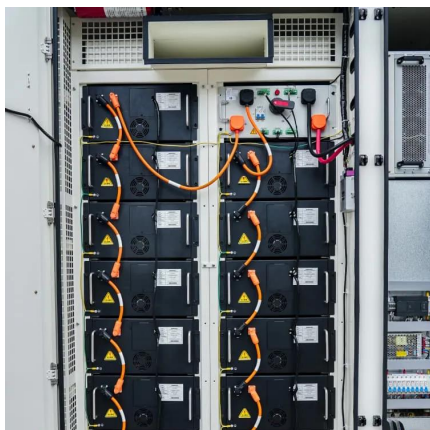
### **Lithium Battery Voltage Guide: Types, Charging & Compatibly**

Different types of lithium batteries have varying maximum charge voltages: Li-ion Batteries: Typically have a max charge voltage between 4.2 to 4.3 volts per cell. LiPo ...

### **This item was discontinued**

deals on 1.5v aa3400mwh rechargeable lithium battery, u-c charging port, stable voltage, reused 1500 times, affordable, suitable for mouse, remote control, doorbell, alarm clock. on Temu. ...





## Lithium Ion Battery Voltage Explained: Everything You Need to ...

Lithium ion battery voltage range is one of the key parameters which decides the lithium ion battery performance and its safe limits. Lithium-ion batteries function within a ...

## What Determines Lithium Battery Voltage and How to Optimize It?

Most lithium-ion batteries function between 2.5V (cut-off) and 4.2V (peak charge). Continuous operation below 3.0V accelerates capacity fade.



## What Voltage Should I Charge A Lithium-Ion Battery? Safe ...

The recommended voltage for charging a lithium-ion battery is typically between 4.2V and 4.3V per cell. This range ensures optimal battery performance and longevity.

## Battery Voltage Explained: Nominal, Charged, Minimum, and Cut ...

When selecting a lithium-ion battery pack, understanding its voltage characteristics is crucial for ensuring optimal performance and longevity. Three key voltage terms define a ...



## **A Guide to Choosing Voltage Regulators for Lithium ...**

Compare linear, switching, buck, boost, and buck-boost voltage regulators for lithium batteries to ensure efficiency, safety, and extended ...

## **Lithium Battery Voltage Standards Overview , EB BLOG**

By tightly controlling individual cell shipping voltage between 3.6V and 3.9V and assuring that battery pack voltage meets design specs while remaining below the maximum ...



## **Comprehensive Guide to Lithium Battery Cell Voltage During ...**

Understand lithium battery cell voltage during charging and discharging, including safe ranges, cutoff limits, and how voltage impacts performance and safety.







## How does lithium battery BMS determine the battery's ...

To ensure the safe, stable, and efficient operation of battery packs, the Battery Management System (BMS) was developed, becoming an ...



## How to measure the voltage of a lithium battery pack?

For example, a very low voltage may suggest a fully discharged or damaged battery, while a very high voltage may indicate over - charging. Conclusion Measuring the ...

## The composition, method and parameter analysis of lithium ...

After the formation of the lithium-ion battery PACK, there is a significant increase in battery voltage and capacity. Therefore, it requires protection measures such as charge ...



## How to Assemble a Lithium Battery Pack: Step-by-Step Guide for

Conclusion Assembling a lithium battery pack requires careful planning, the right tools, and a thorough understanding of series and parallel configurations. By following this ...



## Custom Battery Pack Voltage Guide: 24V-72V Design ...

Master custom battery voltage design for Li-ion, LiFePO4 & LiPo packs. UN 38.3-compliant, ISO 9001-certified solutions with smart BMS. Get a ...



## Lithium Battery Voltage Chart

The lithium battery voltage chart serves as a guide for users to keep their batteries within the recommended voltage range, ensuring optimal performance and longevity.

## Contact Us

For catalog requests, pricing, or partnerships, please visit:  
<https://www.talbert.co.za>