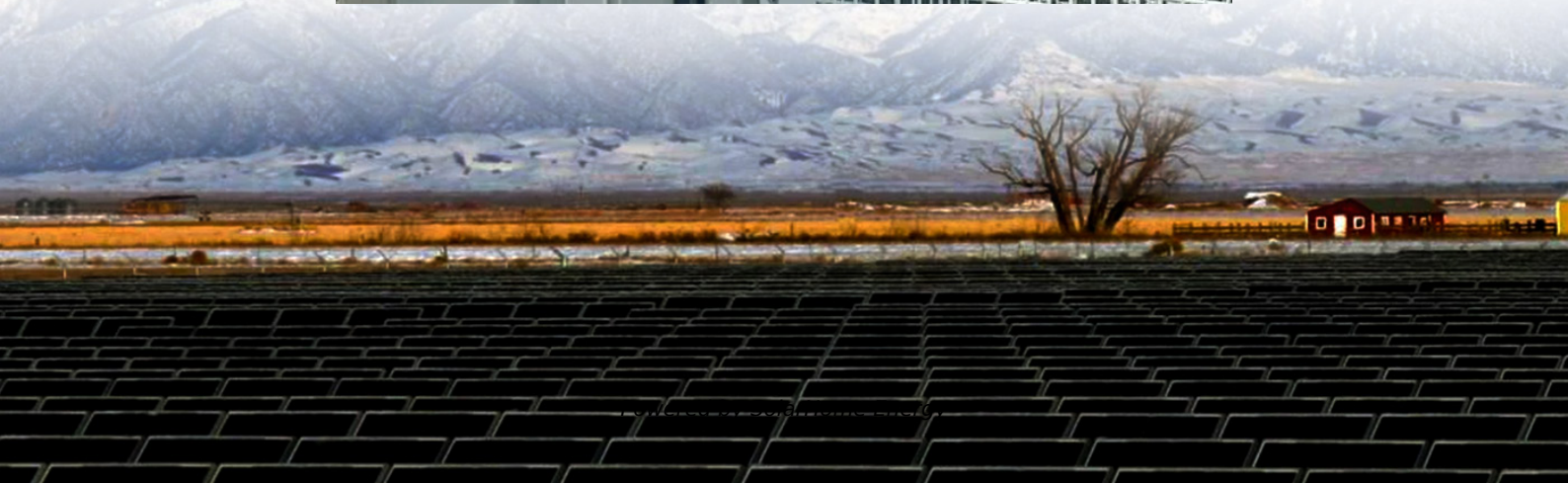


Southern Europe photovoltaic panels facing west generate electricity





Overview

Should solar panels be oriented west?

Within the solar industry, it's common knowledge that the optimal orientation of solar photovoltaic (PV) panels in the Northern Hemisphere is typically south, to maximize electricity production over the life of the system. Recently, however, there has been much discussion, and even incentives being offered, for orienting PV systems west.

Should solar panels face south or east-west?

As we all know, the yield per modules is at its best when the module is facing South. However, since the pitch of the solar panels in flat roof mounting systems is relatively low (10° - 12°), the non optimal azimuth of East-West systems are more than compensated by other benefits. Win for East-West. 22.5% more yield/m².

Should PV panels be moved to the west?

But a recent report says that shifting more PV panels to the west would produce electricity at a time when the electricity is much more useful to utilities, reducing the need for utilities to buy costly power to meet peak loads.

Could east-west facing bifacial solar panels boost electricity prices?

East-west facing bifacial solar panels could boost solar power's economic value and help stabilise electricity prices across the EU.

Are east-west facing vertical PV panels a good investment?

The study shows that with higher PV penetration, aligning more closely with key EU policy initiatives (EU Solar Energy Strategy, Green Deal, REPowerEU Plan), east-west faced vertical PV panels can play a favourable role to achieve a more balanced and more integrated power system in the EU by 2040.



What is a west-facing solar panel?

West-facing panels take over in the afternoon and evening, coinciding with after-work activities and household energy consumption. This dual peak generation profile provides a much better match for modern energy usage patterns.



Southern Europe photovoltaic panels facing west generate electricity



West vs. South: Why change the orientation of your PV system

To optimize electricity production from a solar PV system, PV panels should face south. Find out why orienting PV systems west may be beneficial.

East & West is Best!? Solar Panel Orientation

The general notion is that North-facing solar panels (in the Southern Hemisphere) is the most effective way of mounting solar panels. ...



The Case for West-Facing Solar Panels

But a recent report says that shifting more PV panels to the west would produce electricity at a time when the electricity is much more useful to utilities, reducing the need for ...

Why are solar panels facing due south? , NenPower

Investing in renewable energy through solar panels exemplifies a commitment to



sustainability and efficiency, with the south-facing orientation ...



Solar Panel Orientation and Positioning for Best Angle

For example, a solar power system might be designed to produce maximum power output only in the winter months in order to reduce peak electricity ...

Which direction must solar panels face, and what ...

If panels were placed facing east or west, they would generate a good amount of energy only during the morning or the evening.



Which direction must solar panels face, and what angle should

If panels were placed facing east or west, they would generate a good amount of energy only during the morning or the evening.



Solar Panel Placement: Best Direction & Orientation ...

For homeowners in the northern hemisphere, south-facing panels are ideal. Since the sun travels across the southern half of the sky, this direction ensures ...

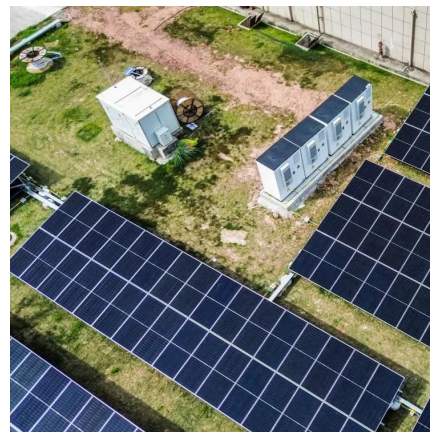


Best Direction for Solar Panels to Maximize Savings -- ...

Key takeaways In the United States, the best direction for solar panels to face is south as it exposes them to the most sun and allows them to produce the most electricity possible. Solar ...

Solar Panel Direction: What is the Best Angle?

South-facing solar panels produce the most electricity in the U.S, but you can still generate more than enough solar power with east or west ...



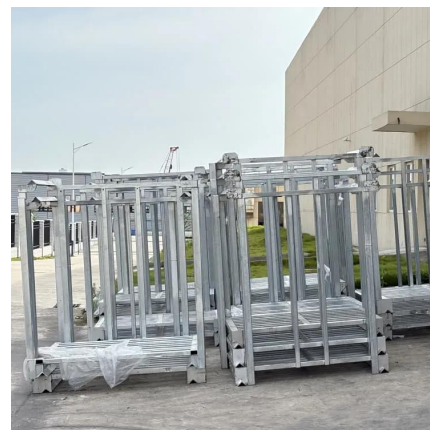
Solar panels: East-facing or west-facing roof?

Determining the orientation and tilt angle of your solar power generation system is one of the most important considerations in designing ...



The best angle and direction for solar panels [UK, 2025]

East-facing panels produce more electricity in the morning, while west-facing arrays generate more in the afternoon and evening. If you only ...



Why Solar Panels Shouldn't Always Face South , Energ Hero

West-facing panels take over in the afternoon and evening, coinciding with after-work activities and household energy consumption. This dual peak generation profile provides ...

Strategic deployment of solar photovoltaics for achieving self

As different energy forms (electricity, thermal energy, hydrogen, etc.) are not segregated, a country might generate electricity to offset its oil demand, which is discussed in ...



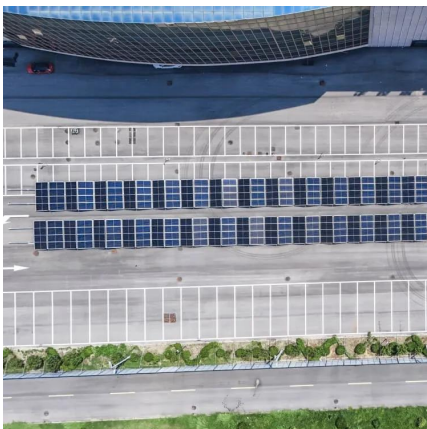


What direction should solar panels face?

Determining the optimal direction for solar panel placement is crucial for maximizing energy production and ensuring the efficiency of your ...

What's the Best Angle for Solar Panels? , EnergySage

Key takeaways South-facing solar panel systems almost always generate the most electricity, but east-west roofs can work well for solar, too. The direction is more important than ...



The Best Direction for Solar Panels for Optimal Production

Generally, if you live in the Northern Hemisphere, the best direction for solar panels is true south. This is because facing your panels toward the equator and the Tropic of Cancer ...

How much electricity do solar panels produce?

A south facing solar PV system will tend to generate more around noon. The sun rises in the east and so east-facing PV panels will have maximum generation ...



Large-scale photovoltaic solar farms in the Sahara affect solar power

Large solar farms in the Sahara Desert could redistribute solar power generation potential locally as well as globally through disturbance of large-scale atmospheric ...



Do Solar Panels Have to Face South?

Discover the intricacies of solar panel installation, focusing on the commonly asked question - Do solar panels have to face south? Let's delve ...



West vs. South: Rethinking the best orientation for solar panels

Their findings indicate that panels oriented to the west generate, on average, 2% more electricity throughout the day compared to their south-facing counterparts. While 2% ...





East to west - The optimal tilt angle and orientation of photovoltaic

This paper evaluates the trade-off between annual energy losses and possible electricity generation cost reductions through adapting PV installation angles for the current ...



East to west - The optimal tilt angle and orientation of ...

This paper evaluates the trade-off between annual energy losses and possible electricity generation cost reductions through adapting PV installation angles for the current ...

Innovative photovoltaic technology could stabilise the EU energy ...

Large-scale deployment of innovative bifacial photovoltaic (PV) systems, oriented east and west instead of the conventional south-facing setup, could significantly help fix ...



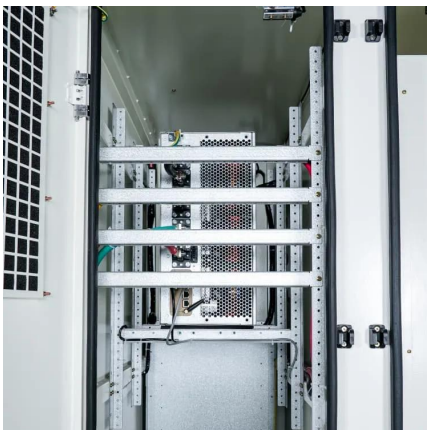
Innovative photovoltaic technology could stabilise the ...

Large-scale deployment of innovative bifacial photovoltaic (PV) systems, oriented east and west instead of the conventional south-facing ...



West vs. South: Why change the orientation of your PV system

Where a South facing system has a clear peak around noon, with solar panels facing East and West the yield is more evenly spread out. This results in a more steady production of kWh and ...



kWh Face Off! East-West Vs South , What is better?

Where a South facing system has a clear peak around noon, with solar panels facing East and West the yield is more evenly spread out. This results in a more steady production of kWh and ...

Solar panel orientation and the effect on panel ...

The direction solar panels should ideally face for optimum sun exposure, varies depending on location. For Australia, solar power yields are higher when ...





[How much electricity do solar panels produce?](#)

A south facing solar PV system will tend to generate more around noon. The sun rises in the east and so east-facing PV panels will have maximum generation part-way through the morning. A ...

Contact Us

For catalog requests, pricing, or partnerships, please visit:
<https://www.talbert.co.za>