

Solar panel photovoltaic module installation angle



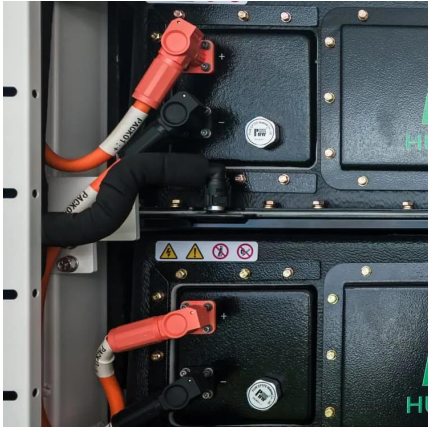


Overview

To achieve that goal, most solar panels face the equator and are installed at an angle between 30 to 45 degrees relative to the horizon. For homes in the northern hemisphere, solar panels should face south. For homes in the southern hemisphere, solar panels should face north.



Solar panel photovoltaic module installation angle

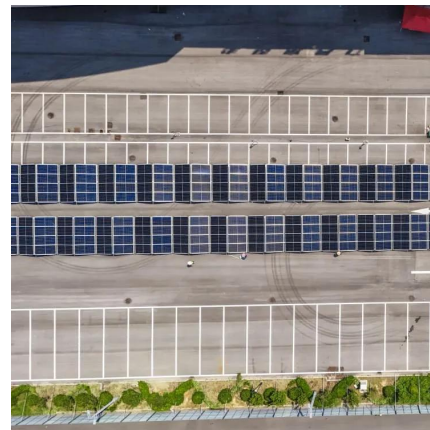


Effect of tilt angle on the performance and electrical parameters ...

Photovoltaic (PV) system's performance is significantly affected by its orientation and tilt angle. Experimental investigation (indoor and outdoor) has been carried out to trace the ...

Photovoltaic panel elevation angle calculation formula

Here are two simple methods for calculating approximate solar panel angle according to your latitude. Calculation method one. The optimum tilt angle is calculated by adding 15 degrees to ...



Modeling and estimation of solar panel tilting angles and

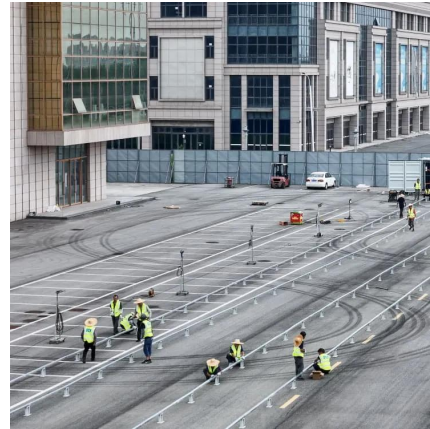
Propelled by worries about climate change and global warming Photovoltaic panels installation has gain prominence in recent times worldwide due to its affordability and ...

How to Determine the Optimal Tilt Angle for Solar Panels: A Step ...

Furthermore, models that disregard the optimal tilt angle for solar panels and utility photovoltaic



tracking may greatly underestimate the potential of sunlight, making precise ...

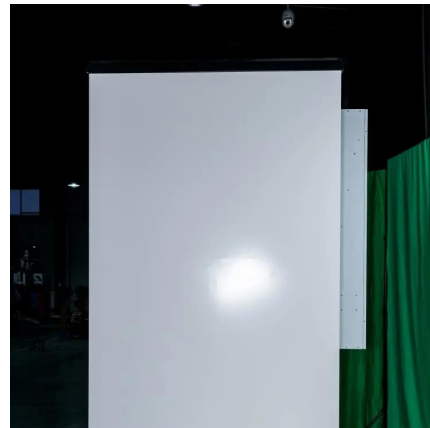


Optimum Tilt of Solar Panels

Use one of these formulas to find the best angle from the horizontal at which the panel should be tilted: If your latitude is below 25° , use the latitude times 0.87. If your latitude ...

[Renogy Product Manuals & Downloads . Renogy US](#)

Find and download Renogy product manuals, user guides, datasheets, firmware, and software tools. Get the technical documentation and support you need for your solar system installation ...



Solar Angles and Tracking Systems

Students learn about the daily and annual cycles of solar angles used in power calculations to maximize photovoltaic power generation. They gain an ...





Solar Panel Angle: Definition, and How to Calculate

Solar panel angle is the tilt at which a solar panel is installed. Installing solar energy is more cost-effective and energy-efficient if you select the right angle for the solar ...



Optimal Solar Panel Angle: Maximizing Efficiency and Energy ...

So in most cases, the optimal orientation for solar panels is to face them directly south in the Northern Hemisphere or directly north in the Southern Hemisphere. This way solar ...

Solar Panel Angle: how to calculate solar panel tilt ...

Discover how to calculate the optimum solar panel angle for your solar system according to your location and the season. Two calculation ...



[Calculate Your Optimal Solar Panel Tilt Angle](#)

Boost your solar panel's efficacy with our comprehensive guide. Calculate the optimal tilt angle based on empirical data, dispel common myths, and ...



Solar Panel Angle: Definition, and How to Calculate

Solar panel angle is the tilt at which a solar panel is installed. Installing solar energy is more cost-effective and energy-efficient if you select ...



Why do solar panels need to be placed at an angle?

In general, solar PV panels should be at a greater angle to the ground in the winter to capture the low sun in most winter months, and at a smaller angle to ...

How to Determine the Best Solar Panel Angle by ...

Determining the ideal solar panel angle by location for photovoltaic systems is crucial for maximizing energy generation throughout the year. A ...





Optimum Tilt of Solar Panels

For example, Richard Perez and Sam Coleman, in "PV Module Angles", Home Power n.34 p.14-16, 1993, recommend an angle that puts the ...

Solar Panel Angle: how to calculate solar panel tilt angle?

Discover how to calculate the optimum solar panel angle for your solar system according to your location and the season. Two calculation methods explained.



Ultimate Guide to Photovoltaic Installation: Step-by ...

Looking to install a photovoltaic (PV) system? Our detailed guide provides step-by-step instructions for pitched, in-roof, and flat roof mounting. Avoid common ...

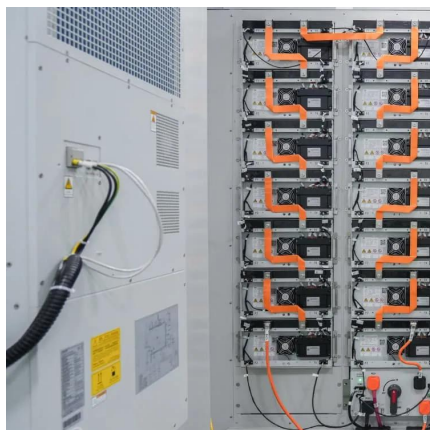
The Best Angle for Solar Panel Installation

In general, solar panels should be installed so the sunlight hits them at as close to a perpendicular 90-degree angle for as long as possible ...



[How to Calculate Solar Panel Tilt Angle?](#)

The solar panel angle calculator latitude refers to the latitude of the installation location used in the calculation of the optimal tilt angle for a solar ...



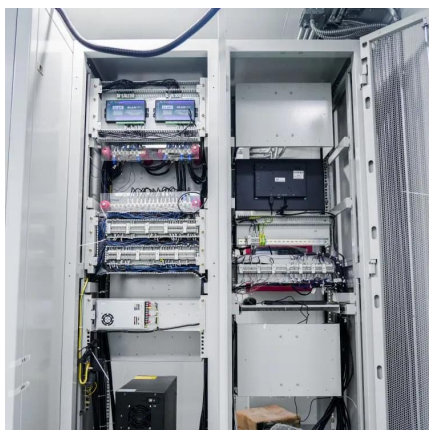
Solar Panel Tilt Angle Calculator

Discover the best angle for your solar panels with our Solar Panel Tilt Angle Calculator. Maximize energy efficiency and save money!



Solar panel inclination angle, location and orientation

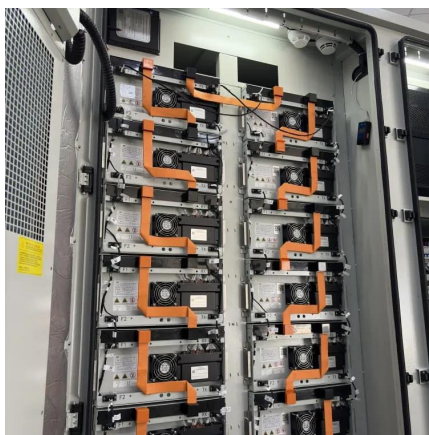
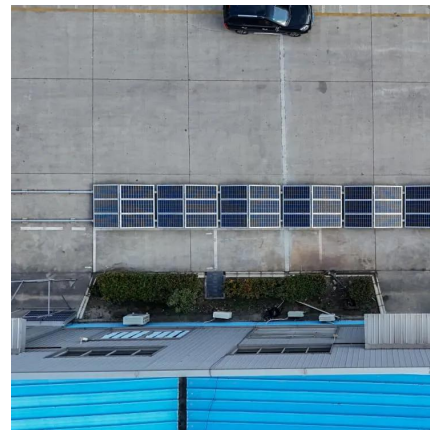
The optimal tilt angle of photovoltaic solar panels is that the surface of the solar panel faces the Sun perpendicularly. However, the angle of incidence of solar radiation varies ...





Optimal tilt angle for solar photovoltaic modules on pitched rooftops

Generally, due to the combined advantages of high total annual solar irradiance received by a module and the practicality of installation adjustment, the annual optimal tilt ...

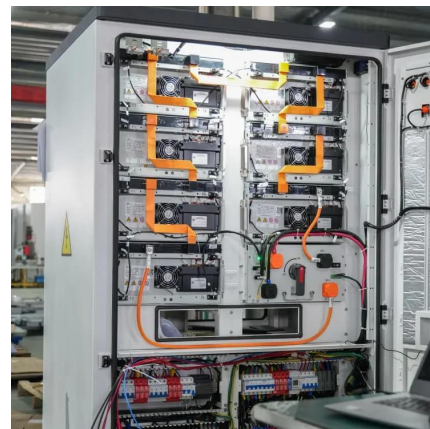


How to Determine the Best Solar Panel Angle by Location: A ...

Determining the ideal solar panel angle by location for photovoltaic systems is crucial for maximizing energy generation throughout the year. A commonly used formula ...

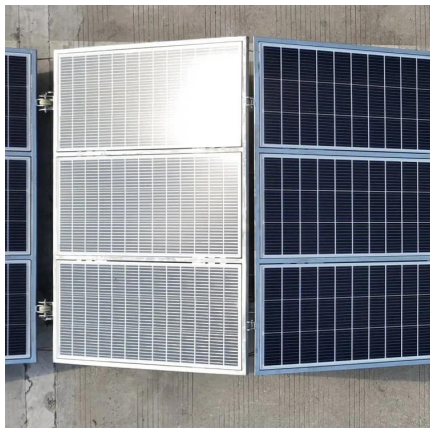
How to calculate the best solar panel angle and installation guide

How to calculate the best solar panel angle and installation guide From the perspective of the current cost of solar power generation, choose the solar panel angle is a ...



Adjustable Tilt Solar Mounting for metal, sandwich roof top

Factory direct solar panel mounts for metal, sandwich, zinc, tin, iron roofing Adjustable tilt angle from 10° ~ 60° .



Optimum location and influence of tilt angle on performance of solar PV

With the growing demand of economically feasible, clean, and renewable energy, the use of solar photovoltaic (PV) systems is increasing. The PV panel performance to ...

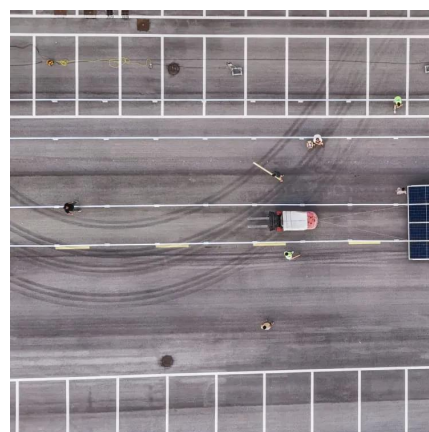


Solar panel inclination angle, location and orientation

So in most cases, the optimal orientation for solar panels is to face them directly south in the Northern Hemisphere or directly north in the ...

What is the optimal orientation and tilt angle for solar panels

With the DualSun PV- T panels, which produce both electricity and hot water, the optimal angle is the same as for PV panels. Example: For a DualSun installation in Marseille, ...





The Best Angle for Solar Panel Installation

In general, solar panels should be installed so the sunlight hits them at as close to a perpendicular 90-degree angle for as long as possible during the day. To achieve that goal, ...

Why do solar panels need to be placed at an angle?

In general, solar PV panels should be at a greater angle to the ground in the winter to capture the low sun in most winter months, and at a smaller angle to the ground in the summer to ...



Contact Us

For catalog requests, pricing, or partnerships, please visit:
<https://www.talbert.co.za>