

# Solar base station EMS distance





## Overview

---

Are solar powered cellular base stations a viable solution?

Cellular base stations powered by renewable energy sources such as solar power have emerged as one of the promising solutions to these issues. This article presents an overview of the state-of-the-art in the design and deployment of solar powered cellular base stations.

What is solar storage & EMS?

Solar Storage and EMS Integrating EMS with battery systems allows surplus solar energy to be stored for later use. This not only enhances energy independence but also reduces reliance on the grid during peak times. 1. Improved Monitoring and Analytics: EMS provides detailed insights into energy production, enabling smarter decision-making.

What is energy management systems (EMS) in solar farms?

The integration of EMS in solar farms has significantly reduced grid dependency, supporting the state's renewable energy goals. Energy Management Systems (EMS) are revolutionizing the solar energy sector. By optimizing energy production, storage, and distribution, EMS ensures solar energy systems operate efficiently and sustainably.

How does EMS improve solar energy production?

Solar energy production fluctuates based on weather conditions and time of day. EMS bridges this variability by balancing supply and demand efficiently. • Real-time monitoring ensures energy output matches the load requirements. • Load prioritization directs surplus solar energy to critical operations or storage. Enhancing Energy Efficiency.

What is solar EMS & how does it work?

EMS uses data analytics to identify inefficiencies in solar systems. For instance, it can detect faulty panels or underperforming batteries, ensuring



maximum system performance. Solar Storage and EMS Integrating EMS with battery systems allows surplus solar energy to be stored for later use.

Why do we use satellite for cellular base station backhaul?

Satellite are widely used today for cellular base station backhaul when the distance between the base station equipment and the core of the network is too large for microwave to be economically viable.



## Solar base station EMS distance

---



### Emergency Medical Services (EMS)

The mission of Dare County Emergency Medical Services (EMS) is to provide high-quality, innovative and cost-effective prehospital emergency medical care ...

### Comparison of Optimization

In this paper, optimization problem-based EMS and rule-based EMS were developed and compared to investigate the accuracy and the processing speed, thereby to ...



### Station EMS

The HJ-EMS400 Station-level EMS System is an advanced energy management solution designed for the collaborative management of photovoltaic (PV), energy storage, and charging ...

### Advanced EMS in Utility-Scale Solar Projects: Enhancing Safety ...

In this article, we'll explore how EMS transforms the way utility-scale solar projects operate,





enhancing both safety and efficiency. Utility-scale solar projects are essential to ...

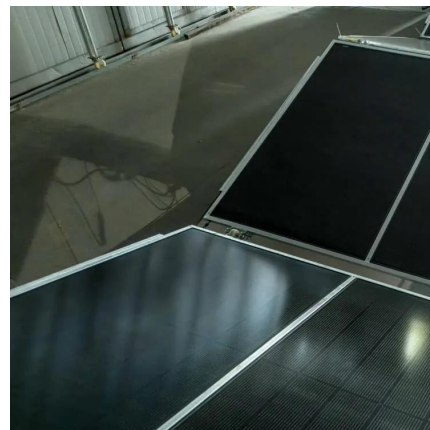


### [Chapter 5 EMS Communications Flashcards . Quizlet](#)

Study with Quizlet and memorize flashcards containing terms like base station, biotelemetry, cellular telephones and more.

### [Solar Base Station Gets Upgrade . BNL Newsroom](#)

To support this research and development effort, Brookhaven Lab established a solar base station with instruments for precisely measuring solar irradiance, or the amount of ...



### **What Distance is Safe?**

The safety distances below are based on Michael Neuert's actual EMF measurements in the San Francisco Bay Area over a 28 year period. The distances shown here are usually far enough ...



## Solar Energy-Powered Battery Electric Vehicle charging stations

Solar energy offers the potential to support the battery electric vehicles (BEV) charging station, which promotes sustainability and low carbon emission. In view of the ...



## [Energy Management System for Telecom Tower Sites](#)

Solar Panel and Lithium Ion Battery have been installed at existing telecom tower sites, which are managed by EMS. The introduction of EMS resulted in 59% reduction of CO<sub>2</sub> emission.

## Solar

A few questions on solar power for Bases ON PLANET I can't seem to get my base to stay charged after leaving the starter planet. How far from the sun



## EMS - Energy Management System and Its Role in Solar Energy

Integrating EMS with battery systems allows surplus solar energy to be stored for later use. This not only enhances energy independence but also reduces reliance on the grid during peak times.



## Satellite cellular backhaul

Satellite are widely used today for cellular base station backhaul when the distance between the base station equipment and the core of the network is ...

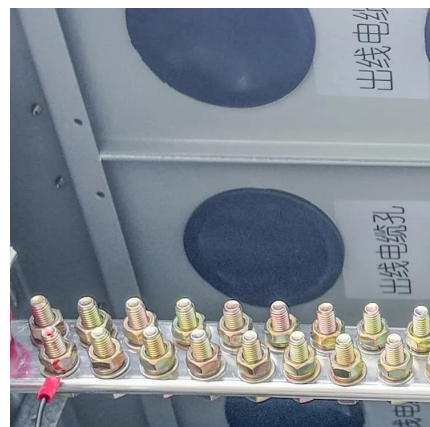


## [Chapter 5: Communication Flashcards . Quizlet](#)

Study with Quizlet and memorize flashcards containing terms like base station, Where should base stations be located?, What are components of an Emergency ...

## Satellite cellular backhaul

Satellite are widely used today for cellular base station backhaul when the distance between the base station equipment and the core of the network is too large for microwave to be ...



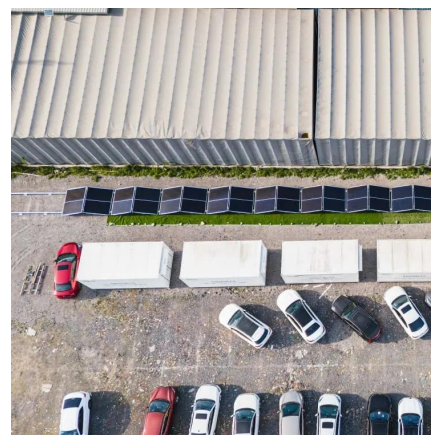


## What Distance is Safe?

The safety distances below are based on Michael Neuert's actual EMF measurements in the San Francisco Bay Area over a 28 year period. The ...

## Recommended 5 GMRS Base Stations

Choose the best GMRS base station for your communication needs using my comprehensive guide with top recommendations and ...



## Solar powered cellular base stations: current scenario, issues and

This article presents an overview of the state-of-the-art in the design and deployment of solar powered cellular base stations. The article also discusses current ...



## Comparison of Optimization

In this paper, optimization problem-based EMS and rule-based EMS were developed and compared to investigate the accuracy and the ...





## Energy Management Systems (EMS): Architecture, Core ...

Often designed with a local control station, source-side EMS focuses on grid-level services such as regulating frequency and voltage. Large wind or solar farms rely on EMS ...



## Designing Fire And EMS Stations: A Comprehensive Guide

Fire and EMS stations also contribute to infectious disease risks. Due to the nature of their work, fire and EMS personnel are at an increased risk of exposure to bloodborne and airborne ...



## EMS - Energy Management System and Its Role in ...

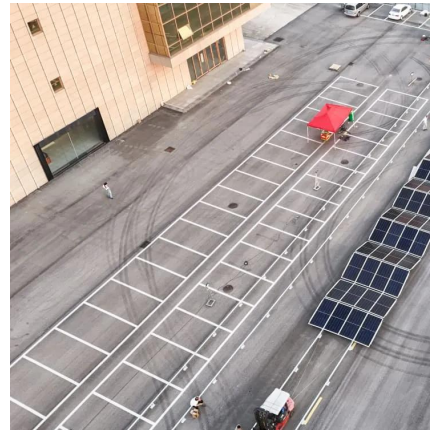
Integrating EMS with battery systems allows surplus solar energy to be stored for later use. This not only enhances energy independence but also reduces ...





## Top Advanced Solar Energy Management System in the USA

That's where Solar Energy Management Systems (EMS) come in. These advanced systems optimize energy use, balance loads, and prevent failures to ensure ...



## [Solar EMS -- Solar and Energy Monitoring Tool App](#)

See what is happening Our Solar EMS app makes it easy to monitor your PV solar and grid system anywhere you are and makes sure you understand what is happening.

## Design Considerations and Energy Management System for ...

This paper presents the design considerations and optimization of an energy management system (EMS) tailored for telecommunication base stations (BS) powered by



## Strategic Planning for Setting up Base Stations in ...

Abstract Emergency Medical Systems (EMSs) are an important component of public health-care services. Improving in-frastructure for EMS and specifically the construction of base stations at ...



## Station EMS

Highjoule powers off-grid base stations with smart, stable, and green energy. Highjoule's site energy solution is designed to deliver stable and reliable power for telecom base stations in off ...



## Building a safe distance for solar power stations

PROTIP: A safe distance to put between stations is 2 km (along x-, y- and z-axis) for most stations, however, if you are going to place huge stations like a solar power plant xl you may



## Contact Us

---

For catalog requests, pricing, or partnerships, please visit:  
<https://www.talbert.co.za>