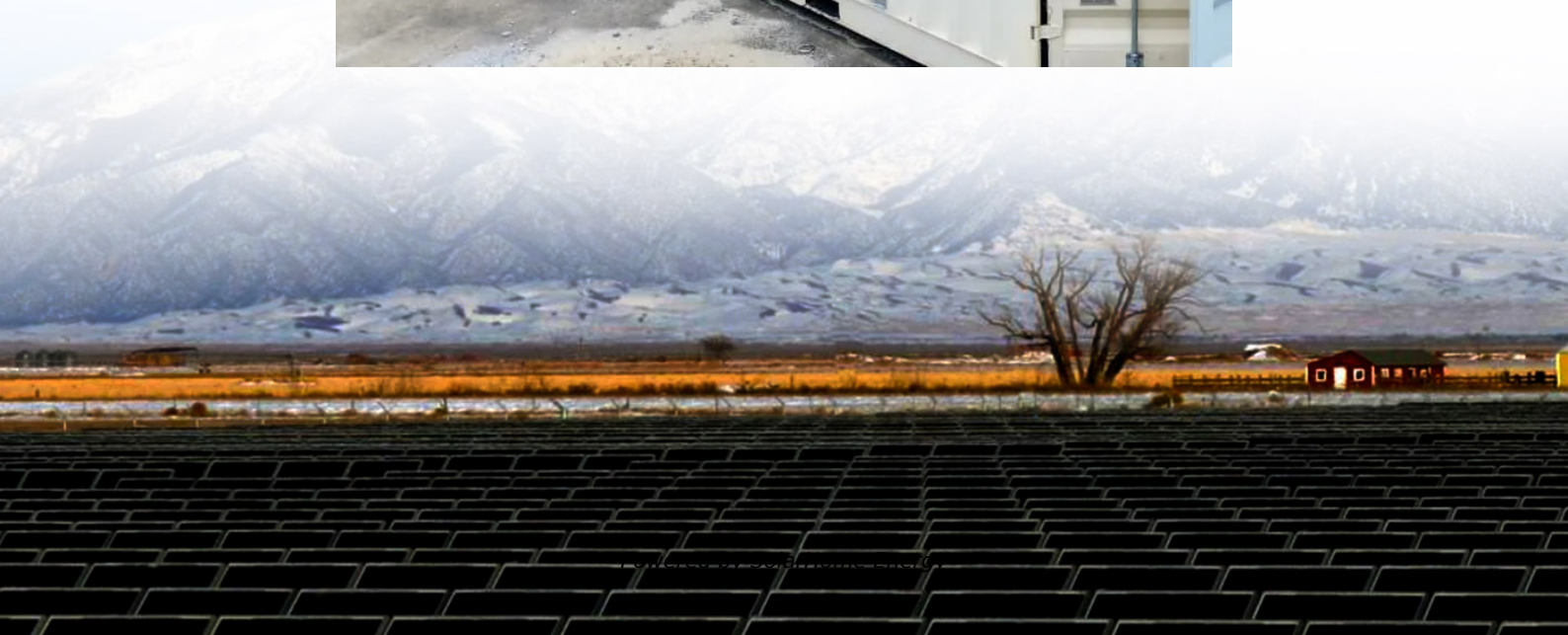


# **Residential photovoltaic panel size standards**





## Overview

---

Standard residential solar panels measure 66 inches by 40 inches, or a little over 5 feet long and 3 feet wide. Each panel therefore takes up around 18 square feet. Commercial panels tend to be a bit bigger than residential panels, averaging about 6.5 feet long.



## Residential photovoltaic panel size standards

---

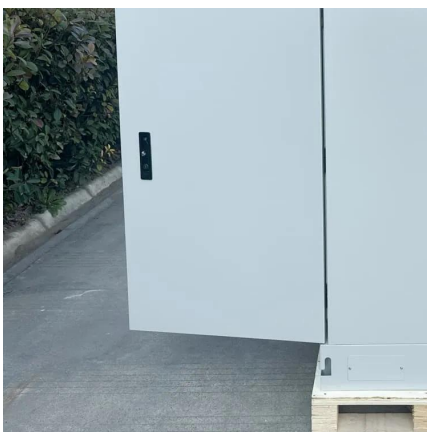


### Solar Panel Sizes: Choosing the Right Dimensions for ...

Choosing the right solar panel size can make or break your system's performance. In this guide, we break down how to match your ...

### Solar Panel Size Matters: How Dimensions Impact Your Home's ...

A typical residential solar panel produces between 250-400 watts of power, depending on its size and efficiency. For example, a standard 60-cell panel measuring 65 x 39 ...



### Solar Panel Size & Weight Guide [+ Charts] - Solartap

Standard residential solar panels measure 66 inches by 40 inches, or a little over 5 feet long and 3 feet wide. Each panel therefore takes up ...

### [Solar Panel Size And Weight: A Comprehensive Guide](#)

When considering residential solar panels, typical configurations consist of 60 cells measuring



approximately 3.25 feet by 5.5 feet. These panels cover an area of 17.62 square ...



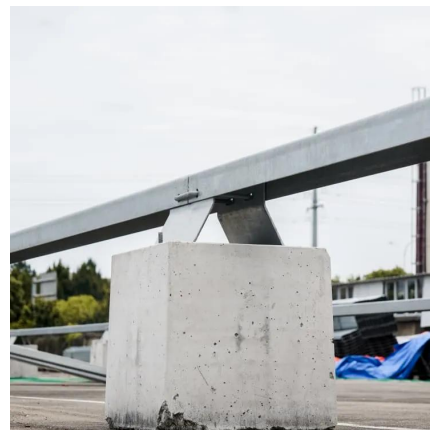
## Understanding Solar Panel Dimensions In 2025: A ...

Explore the most common solar panel dimensions in 2025, including residential and commercial sizes. Learn how solar panel size ...



## Understanding Solar Panel Dimensions In 2025: A Complete Size ...

Explore the most common solar panel dimensions in 2025, including residential and commercial sizes. Learn how solar panel size dimensions affect power, installation, and ...



## Size your solar system

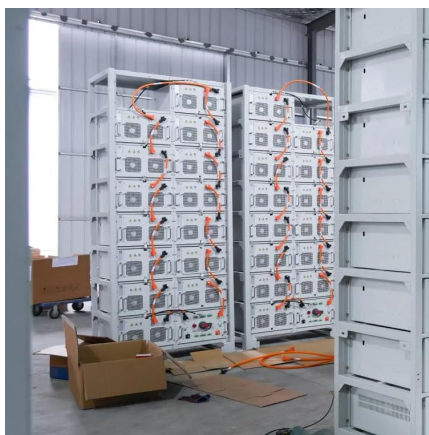
Talk to your solar retailer or installer about the inverter specifications for inverter to panel size requirements. If the system size (total rated solar panel output) is more than the inverter ...





## Solar Panel Sizes & Dimensions in the UK (2025)

Solar Panel Sizes When speaking about a solar panel's size, people can often become confused. Solar panel size can refer to the power it ...



### **Photovoltaic panel sizes: a comprehensive guide to ...**

A guide to choosing the ideal photovoltaic panel size to optimize space, energy efficiency, and costs, from compact solutions to large-format ...

## What Are the Common Solar Panel Sizes?

Still, most 60-cell solar panels have a size of 39" X 66" and most 72-cell solar panels have sizes of around 39" X 77". However, panels with cell counts of 96, 120, and 144 ...



### **Solar Photovoltaic Panel Sizes [Full List And Other ...**

Are There Multiple Sizes of Solar Panels? Yes, many solar panel sizes are available on the market, and they can vary depending on the types of solar ...



## Standard Solar Panel Sizes And Wattages (100W-500W ...

The goal here is to get to the average solar panel size by wattage. You can find typical dimensions of 100W, 150W, 170W, 200W, 220W, 300W, 350W, 400W, and 500W solar ...



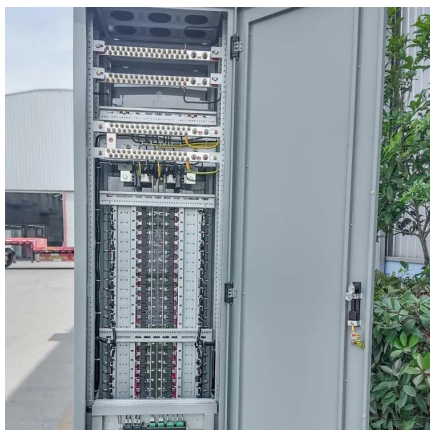
## Solar Panels Size & Weight (Including Commercial ...

Check out this full guide on solar panels size, weight, and other characteristics, including a comparison between Residential and Commercial ...

## Solar Panel Sizes & Dimensions UK (Do they even ...

This article provides a comprehensive guide to solar panel sizes in the UK, exploring their significance and considerations for residential and ...



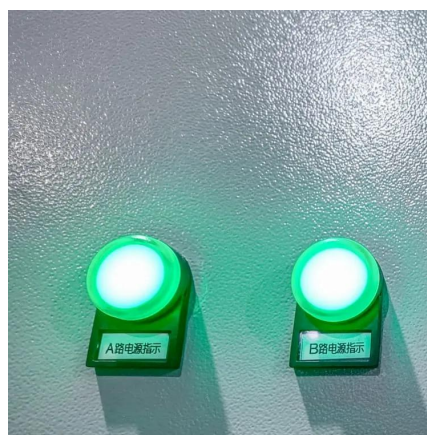


## [Solar Panel Dimensions and Sizes: Complete Guide](#)

There are three main sizes of solar panels to know: 60-cell, 72-cell, and 96-cell. For commercial and residential solar panels, the 60-cell and 72-cell solar ...

## **Solar Panel Size & Weight Guide [+ Charts] - Solartap**

Standard residential solar panels measure 66 inches by 40 inches, or a little over 5 feet long and 3 feet wide. Each panel therefore takes up around 18 square feet. Commercial ...



## **Complete Guide to Solar Panel Size**

When considering residential solar panels, typical configurations consist of 60 cells measuring approximately 3.25 feet by 5.5 feet. These ...

## **The best solar panel size guide every homeowner needs**

When people talk about a standard solar panel size, they usually mean the typical dimensions found in the industry. Solar cells are assembled ...



## Perfect Solar Panel Sizes for Your Home (Expert Sizing Guide)

A typical residential solar panel measures about 65 inches by 39 inches (roughly 5.4 feet by 3.25 feet), though slight variations exist between manufacturers. These standard ...



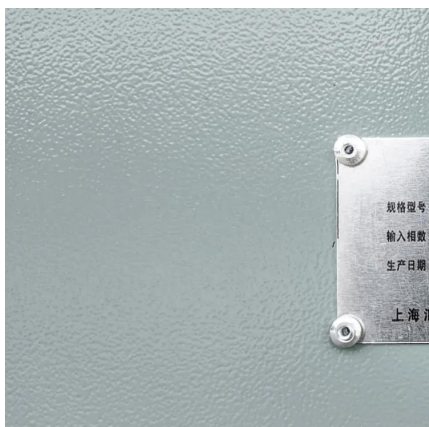
## The best solar panel size guide every homeowner needs

When people talk about a standard solar panel size, they usually mean the typical dimensions found in the industry. Solar cells are assembled in grids, and the most common ...



## Understanding Solar Panel Sizes: A Homeowner's Guide

What does solar panel size really mean? Explore the dimensions, weight, and power output (watts) of different panels. Find the perfect fit for ...







### [Solar panel sizes & dimensions: explained \[UK, 2025\]](#)

Discover the typical power rating and physical dimensions of a residential solar panel, and the key things to consider.



### [Standard Solar Panel Sizes And Wattages \(100W ...](#)

The goal here is to get to the average solar panel size by wattage. You can find typical dimensions of 100W, 150W, 170W, 200W, 200W, 220W, 300W, 350W, ...

### [Solar Panel Dimensions and Sizes: Complete Guide](#)

There are three main sizes of solar panels to know: 60-cell, 72-cell, and 96-cell. For commercial and residential solar panels, the 60-cell and 72-cell solar panels size are most commonly used ...



### **Do Solar Panel Sizes Actually Matter? , Facts You Should Know**

Discover the standard solar panel size and dimensions for residential and commercial systems. Learn about common solar panel wattages and how the size impacts energy output. This ...



## How Big is a Solar Panel? The Solar Panel Size Guide

Most residential panels range between 250 and 400 watts per hour. As solar technology advances, the size of solar panels is decreasing as efficiency increases.



## What Is the Average Size of a Solar Panel? Quick Guide

Let's break it down. What is the average size of a solar panel? A typical residential solar panel measures about 65 inches by 39 inches and covers nearly 18 square feet. Key ...

## Solar Panel Size and Weight Explained: How Big Are ...

What is the best size of solar panels? The best-sized solar panel is one that fits your home's needs. Most of the time, a 60 to 72-cell solar panel is ...



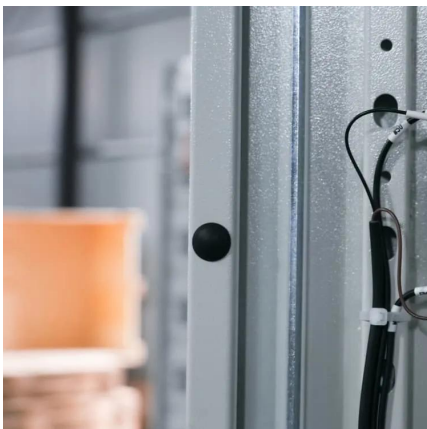


## Complete Guide to Solar Panel Size

60-cell solar panels are the standard solar panel size for homes. They are usually 5.5 feet by 3 feet and weigh around 40 pounds. 72- cell panels are bigger, measuring around 6.5 feet by 3 ...

### Standard Sizes of Solar Panels: Choosing the Right One for Your ...

Explore the standard sizes of solar panels to find the perfect fit for your energy needs. Learn more about the size of one solar panel and options available.



### Solar Panel Sizes: Choosing the Right Dimensions for Any Project

Choosing the right solar panel size can make or break your system's performance. In this guide, we break down how to match your energy needs, roof space, and budget with ...

## Contact Us

For catalog requests, pricing, or partnerships, please visit:  
<https://www.talbert.co.za>