

Power generation of 15 square meters of photovoltaic panels





Overview

A solar power per square meter calculator takes details regarding these factors and then gives the accurate output generated by the solar panel per square meter.

Wattage is the output of solar panels that is calculated by multiplying the volts by amps. Here, the amount of the force of the electricity is represented by volts. The aggregate amount of energy used is expressed in amps (amperes). Output ratings on most solar.

To consider the kilowatt required by the solar system, you need to use the average monthly consumption. Suppose you use 1400 kilowatt-hours per month, and the average sunlight is 6 hours. Now using the calculation, $1400 / 6 * 30 = 7.7$ kilowatt This is the energy for.

Here, a kilowatt-hour is the total amount of energy used by a household during a year. The calculator used to determine the solar panels kWh needs.

The average solar panel generates between 150 to 200 watts per square meter, 2. This output depends on factors like location, orientation, and panel efficiency, 3. Enhanced technologies and optimal conditions can push this figure higher. What is a solar power per square meter calculator?

It also includes wiring, inverter, charge controller, and battery bank (if used). A solar power per square meter calculator takes details regarding these factors and then gives the accurate output generated by the solar panel per square meter. After this, it's time to learn about solar panel output calculators.

What is the output value of a solar panel?

The output value displayed is an estimate of the energy your solar panel system can generate under average conditions, considering the inputs provided. It factors in panel efficiency, inverter losses, and location-specific solar radiation to give you a realistic expectation of performance.

How much solar energy is received per square meter?



The amount of solar intensity received by the solar panels is measured in terms of square per meter. The sunlight received per square meter is termed solar irradiance. As per the recent measurements done by NASA, the average intensity of solar energy that reaches the top atmosphere is about 1,360 watts per square meter.

How many Watts Does a solar panel use?

Here, the amount of the force of the electricity is represented by volts. The aggregate amount of energy used is expressed in amps (amperes). Output ratings on most solar panels range between 250 watts to 400 watts. 1.

Number of Solar Cells The most common categorization of solar cells is in 60-cell solar panels and 72-cell solar panels.

How much power can a 100m² roof produce?

When panel efficiency reaches 30%, a 100m² roof could generate 50,000kWh/year – enough to power 20 average homes. The solar revolution isn't coming; it's already here. Solar panels have become a cornerstone of renewable energy, but many wonder: How much power can a single square meter of solar panels actually produce?

.

How do I calculate total solar panel area (m²)?

Total Solar Panel Area (m²) = Total Solar Panel Power (W) / Power per Solar Panel (W) / Area per Solar Panel (m²) Here's a step-by-step explanation of how to use this formula: Determine Average Daily Electricity Consumption (kWh): This is the total amount of electricity your household uses in a day.



Power generation of 15 square meters of photovoltaic panels



30 square meters of solar panels for power generation

On average, each solar panel measures about 1.7 square meters. Therefore, for a 12-panel system, the total space required is approximately 20.4 square meters. It's important to ...

How much electricity can one square meter of solar panels ...

Therefore, approximately one square meter can generate around 150W-170W of electricity. What power factors will affect the power generation of solar panels?



Actual power generation of photovoltaic panels per square ...

How much power does a solar panel produce? Standardized residential solar panels on the market are quoted to generate averagely between 250 and 400 watts an hour. Typical ...

[Solar Panel Watts Per Square Meter Explained](#)

Compare solar panels to see which generates most electricity per square meter. A higher W/m



value means a solar panel produces more power from a given ...



Solar Rooftop Potential

in 2016, there are over 8 billion square meters of rooftops on which solar panels could be installed in the United States, representing over 1 terawatt of potential solar capacity. With ...

Solar Panel Output Calculator , Get Maximum Power ...

By taking into account factors such as solar panel size, type, inverter efficiency, and location-specific solar radiation, this calculator provides ...



[Solar Power per Square Meter Calculator](#)

A solar power per square meter calculator takes details regarding these factors and then gives the accurate output generated by the solar panel per square meter.



How much solar power can my roof generate?

The amount of sunlight that actually hits your solar panels is a key factor when calculating how much solar energy your roof can generate. You ...



Solar Panel Watts Per Square Meter Explained

Compare solar panels to see which generates most electricity per square meter. A higher W/m value means a solar panel produces more power from a given area. This can help you ...

Solar Panel Power Generation Calculation Analysis

The power generation of a solar panel can be calculated using the following basic formula:
 $P = A \times G \times i$ where: P is the power output in watts (W). A is the area of the solar panel ...



Global Solar Atlas

The Global Solar Atlas provides a summary of solar power potential and solar resources globally. It is provided by the World Bank Group as a free service to governments, developers and the ...



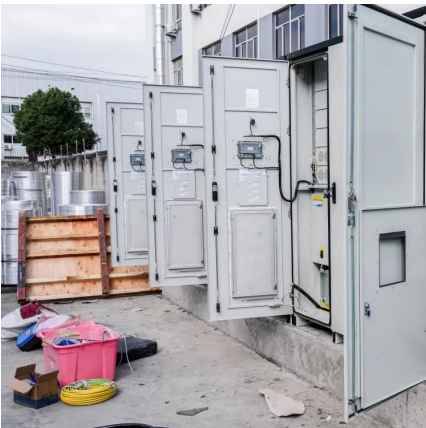
[Solar Rooftop Calculator , Solar Panel Calculator](#)

Online Solar Roof Top Calculator Calculates the number of solar panels, kilowatt capacity, daily unit production, and require area in Square Meter as well as Square Feet based on the ...



Solar Panel Output per Square Meter: Efficiency ...

Solar panels have become a cornerstone of renewable energy, but many wonder: How much power can a single square meter of solar panels actually produce? ...



[Solar Power Roof Area Calculator , Roof Space ...](#)

Additionally, consider using the calculator for budgeting purposes by estimating the cost per square meter of solar panel installations. Solar ...





How many watts of solar photovoltaic power ...

The efficiency of solar panels dictates how well they can convert sunlight into usable electricity, making it crucial for maximizing energy ...

How much electricity can one square meter of solar ...

Therefore, approximately one square meter can generate around 150W-170W of electricity. What power factors will affect the power generation ...



15 square meters of solar panels for power generation

Solar panel efficiency is crucial for a solar power system's success. High-efficiency panels convert more sunlight into electricity, boosting overall output. To measure this efficiency, use solar ...

Solar Panel Calculator

The solar panel calculator is a tool that helps users estimate the requirements for a solar panel system based on various input parameters. It takes into account factors such as the daily ...



Solar Panel Power Per Square Meter: How to ...

Final Words Calculating the solar panel power per square meter is an essential step in understanding the efficiency and potential of solar energy ...



How Much Electricity Do Solar Panels Generate in ...

Discover how much electricity solar panels generate in Ireland. Learn about the average output per square metre, daily generation, and winter ...



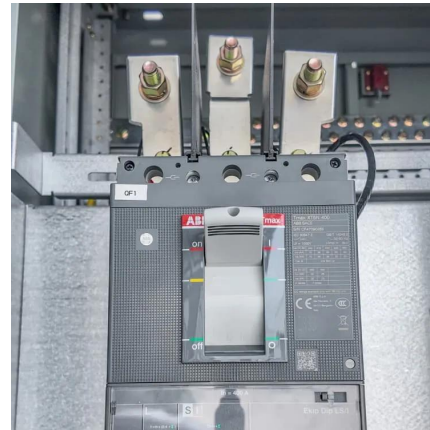
How many square meters of space is required per kw ...

The area required for each kilowatt (kW) solar panel system is approximately 5 to 10 square meters, depending on the panel efficiency and ...



Solar Panel Power Generation Calculation Analysis

The power generation of a solar panel can be calculated using the following basic formula:
 $P=A \times G \times i$ where: P is the power output in watts (W). ...



Understanding Solar Energy

Different types of solar panels will have different conversion efficiencies (the fraction of solar energy converted into electrical energy), but ...

Solar Panel Output Calculator , Get Maximum Power Output

By taking into account factors such as solar panel size, type, inverter efficiency, and location-specific solar radiation, this calculator provides a more accurate reflection of what ...



How many watts of solar photovoltaic power generation per square meter

The efficiency of solar panels dictates how well they can convert sunlight into usable electricity, making it crucial for maximizing energy production per square meter.



[How many watts of solar photovoltaic power ...](#)

The examination of solar photovoltaic power generation underscores its profound significance in contemporary energy discourse. The ...

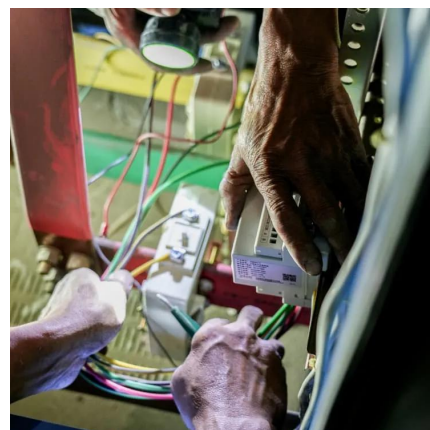


PVWatts Calculator

Estimates the energy production of grid-connected photovoltaic (PV) energy systems throughout the world. It allows homeowners, small building owners, installers and manufacturers to easily ...

Solar Panel Output per Square Meter: Efficiency Factors & Future ...

Solar panels have become a cornerstone of renewable energy, but many wonder: How much power can a single square meter of solar panels actually produce? Let's break down the ...



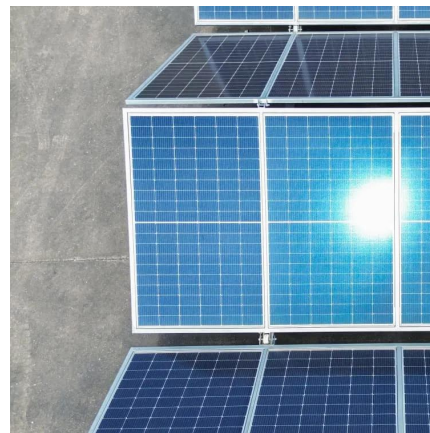


Calculate Rooftop Area for Solar Panel Installation

Navitas Solar offers a guide on calculate rooftop area for solar panels, ensuring efficient space usage and optimal solar energy generation.

Solar Panel Power Generation Calculator

What is a Solar Panel Power Generation Calculator? Definition: This calculator estimates the power output of solar panels based on their area, solar irradiance, and efficiency.



Contact Us

For catalog requests, pricing, or partnerships, please visit:
<https://www.talbert.co.za>